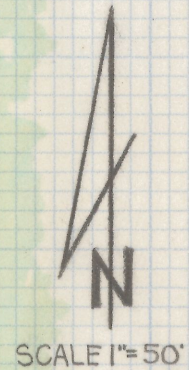
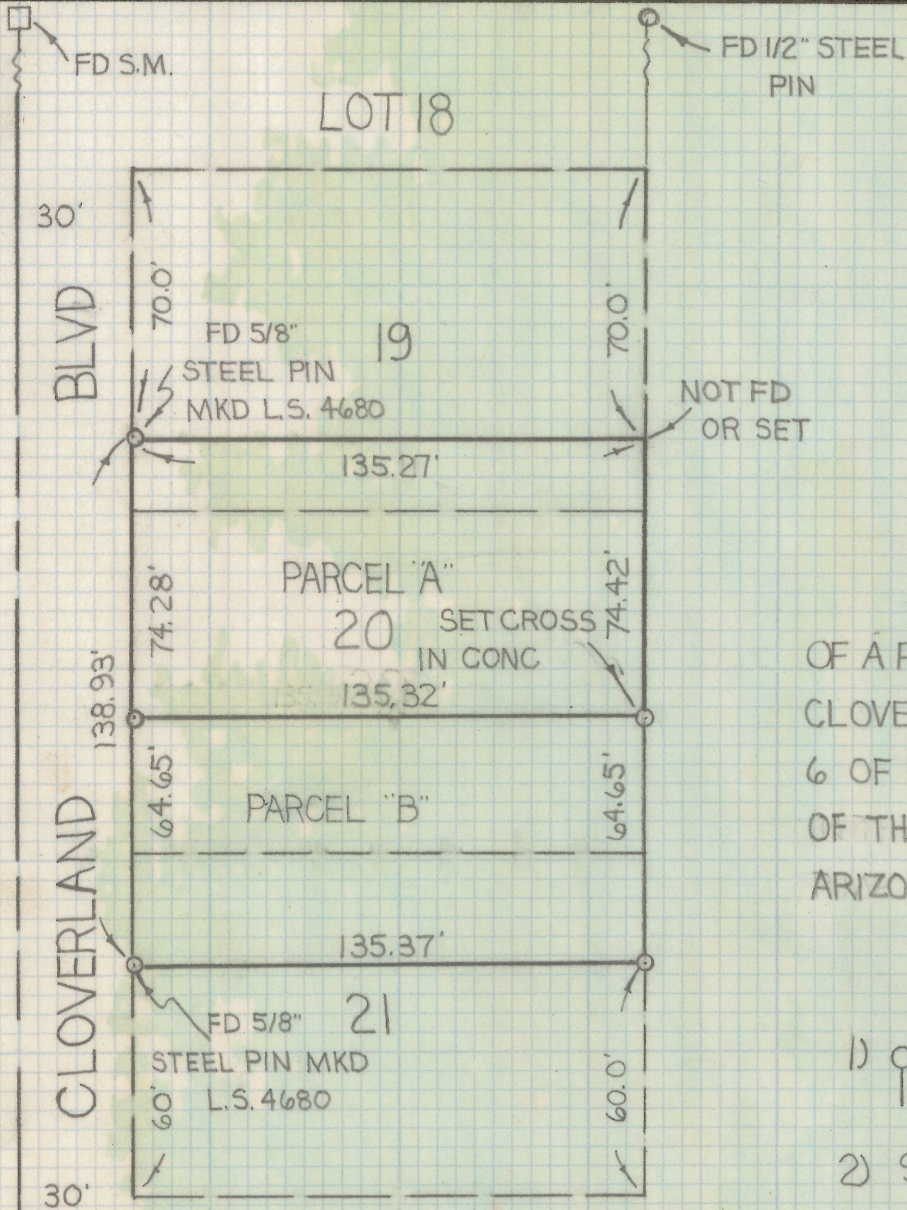


DISCLAIMER:

This unrecorded Record of Survey was donated to the City of Tucson. The City of Tucson provides this data for your personal use "as is." Additionally, the City of Tucson provides this information with the understanding that it is not guaranteed to be accurate, correct or complete and conclusions drawn from such information are the responsibility of the user.



RESULTS OF SURVEY

OF A PORTION OF LOTS 19, 20 AND 21 BLOCK 1 OF CLOVERLAND ADDITION RECORDED IN BOOK 6 OF MAPS AND PLATS AT PAGE 48 IN THE OFFICE OF THE PIMA COUNTY RECORDER PIMA COUNTY ARIZONA AND ARIZONA

NOTES

- 1) INDICATES SET 1/2" STEEL PIN MKD L.S. 4680 UNLESS NOTED
- 2) SEE JOB #74-51, 77-104, 77-1

Z-2019-128

ROBERT F MELLEN
 REGISTERED LAND SURVEYOR
 TUCSON, ARIZONA
 JOB# 79-113