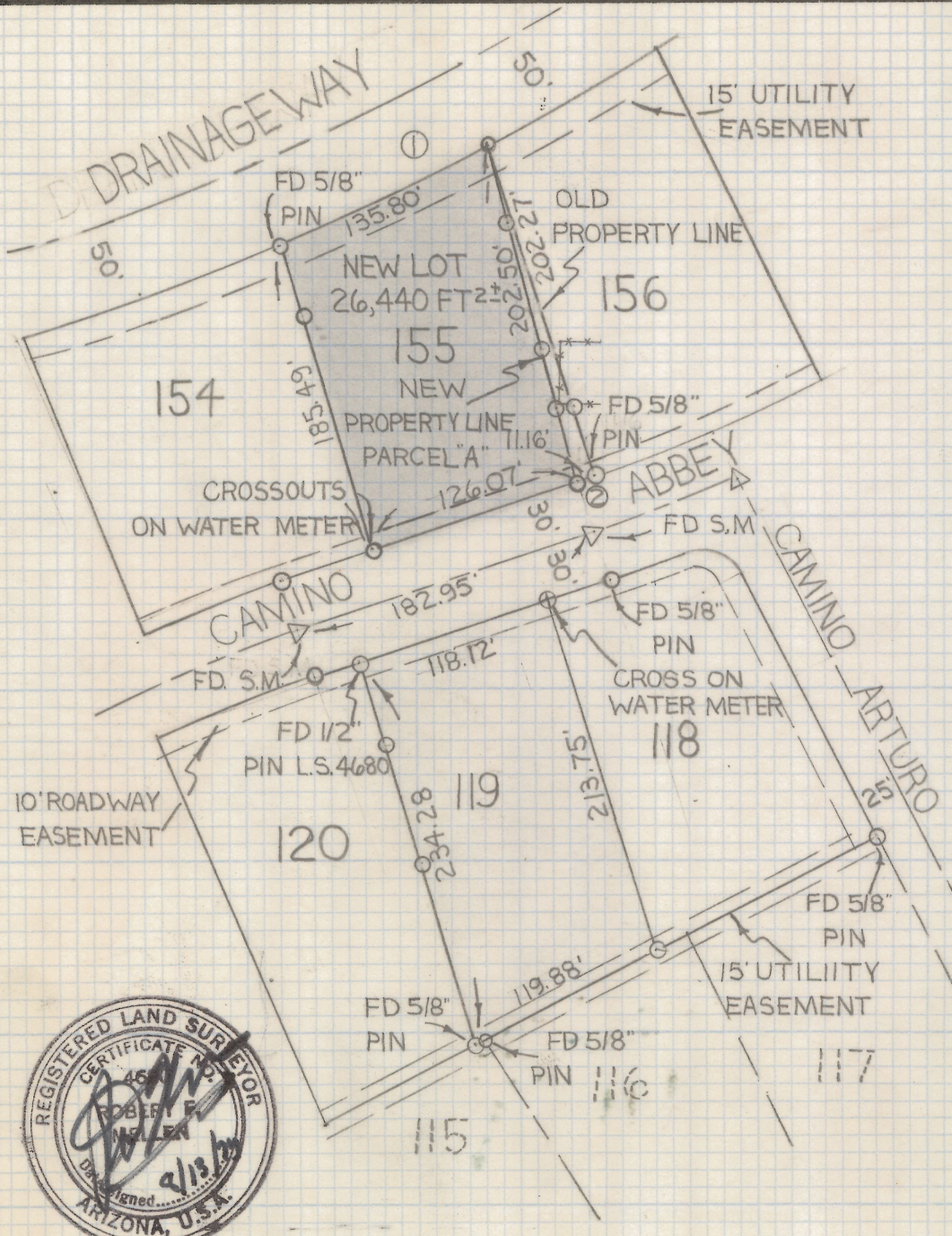
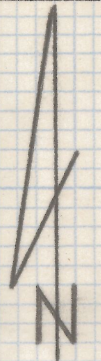


DISCLAIMER:

This unrecorded Record of Survey was donated to the City of Tucson. The City of Tucson provides this data for your personal use "as is." Additionally, the City of Tucson provides this information with the understanding that it is not guaranteed to be accurate, correct or complete and conclusions drawn from such information are the responsibility of the user.



CURVE DATA				
№	RADIUS	DELTA	TANGENT	LENGTH
1	1750'	4°26'46"	67.95'	135.80'
2	970'	0°38'59"	5.50'	11.0'



SCALE 1"=100'

RESULTS OF SURVEY
 OF LOT 155 OF SANTA CATALINA
 ESTATES №4 AS RECORDED IN BOOK 17
 OF MAPS AND PLATS AT PAGE 17 AS
 RECORDED IN THE OFFICE OF THE PIMA
 COUNTY RECORDER PIMA COUNTY ARIZONA

- NOTES -

- 1) INDICATES SET 1/2" PIN MKD L.S. 4680 UNLESS NOTED
- 2) PARCEL A' 1110 SQ FT²



2-2019-130
 ROBERT F. MELLEN
 REGISTERED LAND SURVEY
 TUCSON, ARIZONA
 JOB# 79-116
 REVISED 8/16/79 AREA