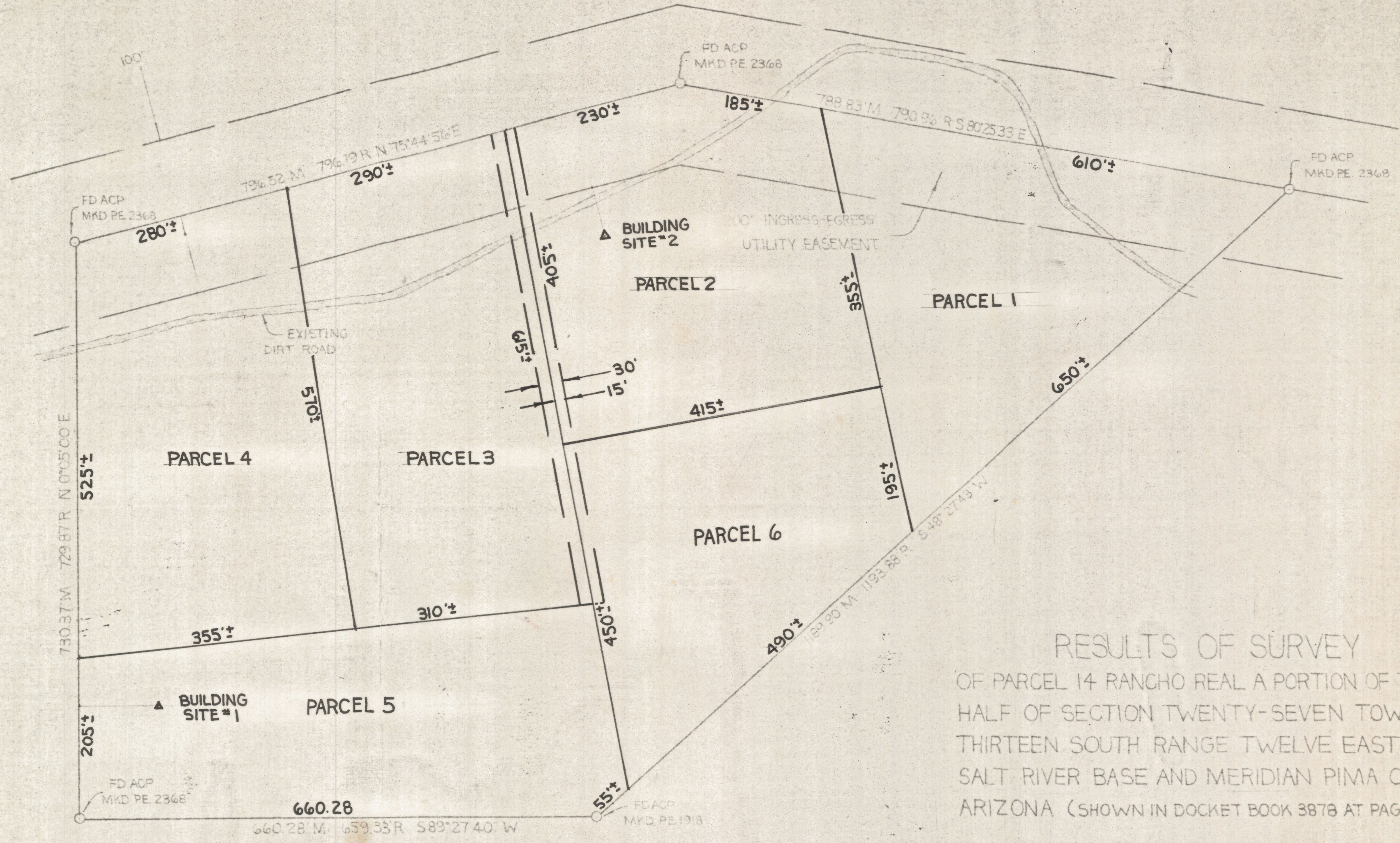


DISCLAIMER:

This unrecorded Record of Survey was donated to the City of Tucson. The City of Tucson provides this data for your personal use "as is." Additionally, the City of Tucson provides this information with the understanding that it is not guaranteed to be accurate, correct or complete and conclusions drawn from such information are the responsibility of the user.



RESULTS OF SURVEY
 OF PARCEL 14 RANCHO REAL A PORTION OF THE SOUTH
 HALF OF SECTION TWENTY-SEVEN TOWNSHIP
 THIRTEEN SOUTH RANGE TWELVE EAST GILA AND
 SALT RIVER BASE AND MERIDIAN PIMA COUNTY
 ARIZONA (SHOWN IN DOCKET BOOK 3878 AT PAGE 127-130)

NOTES

- 1) R-RECORD
- 2) M-MEASURED
- 3) TOTAL AREA (950,570[±] 21.82 AC.)

2-2019-133

ROBERT F. MELLEN
 REGISTERED LAND SURVEYOR
 TUCSON, ARIZONA
 JOB # 79-120

ACCEPTED
 10/24/19

SKETCH "B"