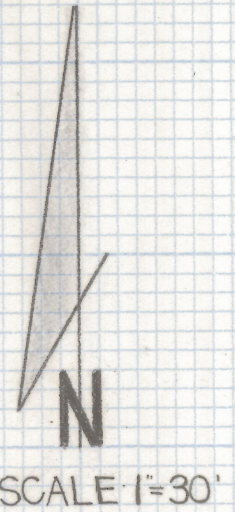
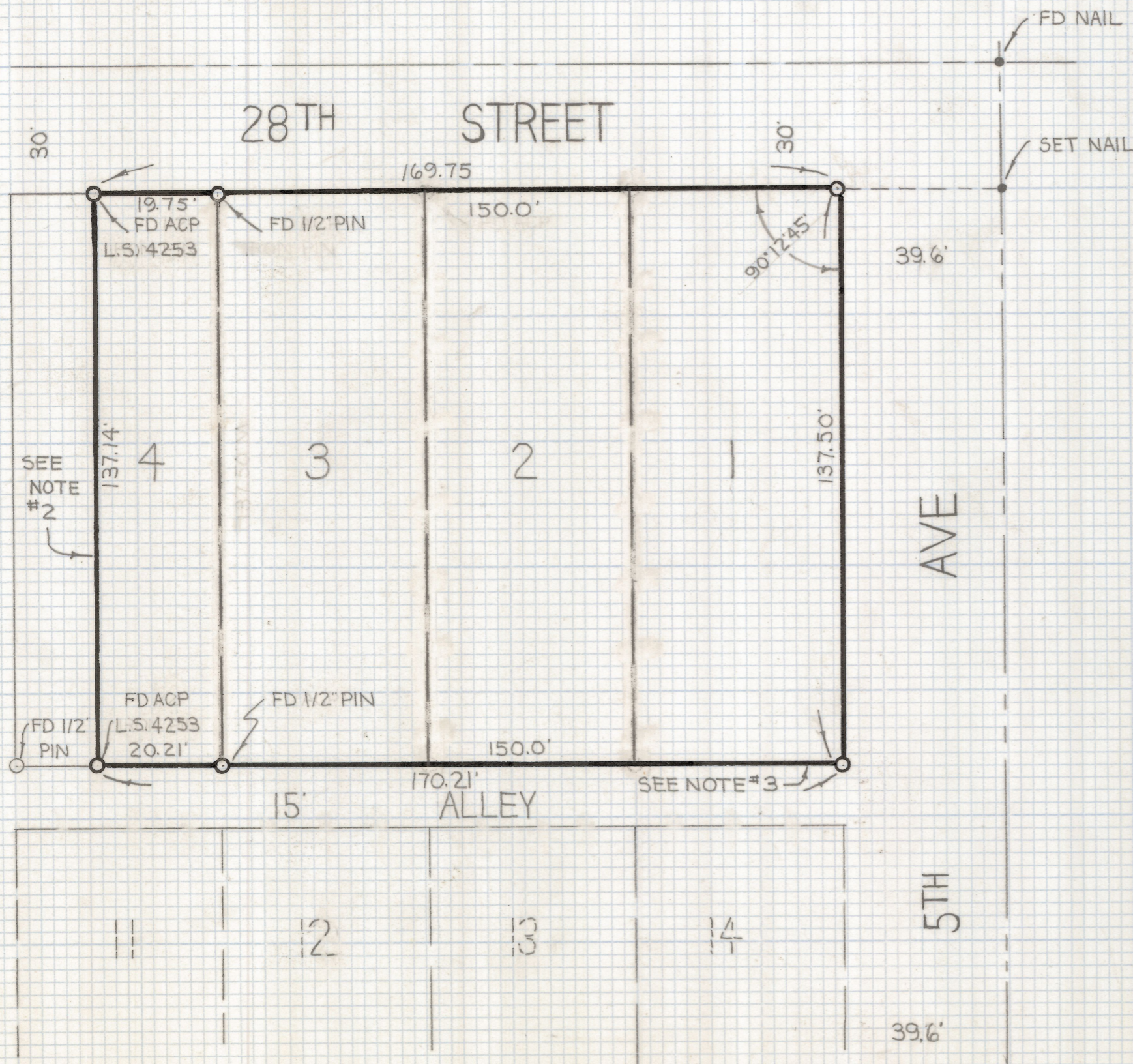


DISCLAIMER:

This unrecorded Record of Survey was donated to the City of Tucson. The City of Tucson provides this data for your personal use "as is." Additionally, the City of Tucson provides this information with the understanding that it is not guaranteed to be accurate, correct or complete and conclusions drawn from such information are the responsibility of the user.



RESULTS OF SURVEY

OF LOTS 1, 2, 3 AND A PORTION OF LOT 4 BLOCK 16 CHATTMANS ADDITION RECORDED IN BOOK 2 OF MAPS AND PLATS AT PAGE 22 RECORDED IN THE OFFICE OF THE PIMA COUNTY RECORDER PIMA COUNTY ARIZONA

NOTES

- 1) \circ INDICATES SET 1/2" PIN MKD L.S. 4680 UNLESS NOTED
- 2) THERE IS A JUDGEMENT RECORDED IN DOC BOOK 5889 PAGE 423 ESTABLISHING THIS LINE
- 3) THIS LINE IS A EASTERLY PROJECTION OF COURT CASE MENTIONED ABOVE

2-2019-137
 ROBERT F MELLEN
 REGISTERED LAND SURVEYOR
 TUCSON, ARIZONA
 JOB# 79-131