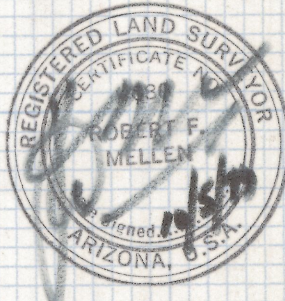
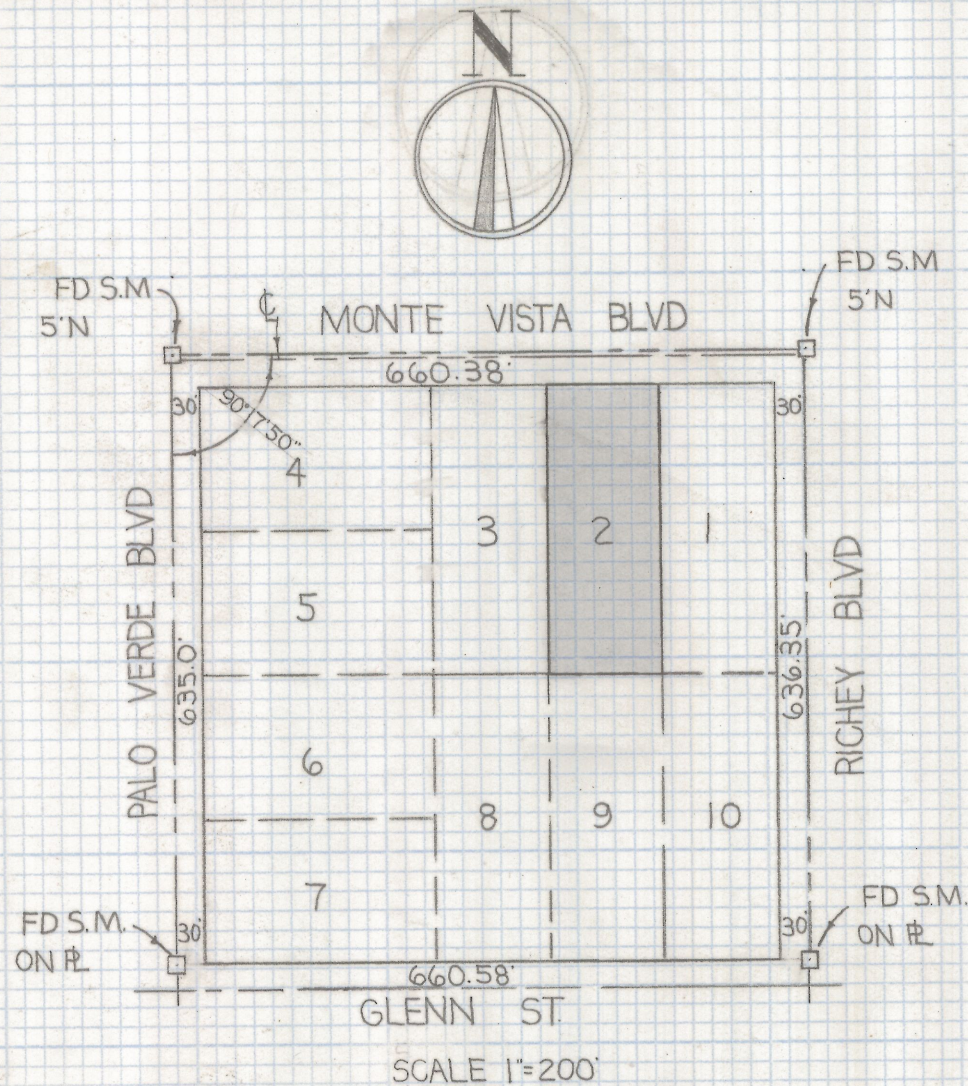
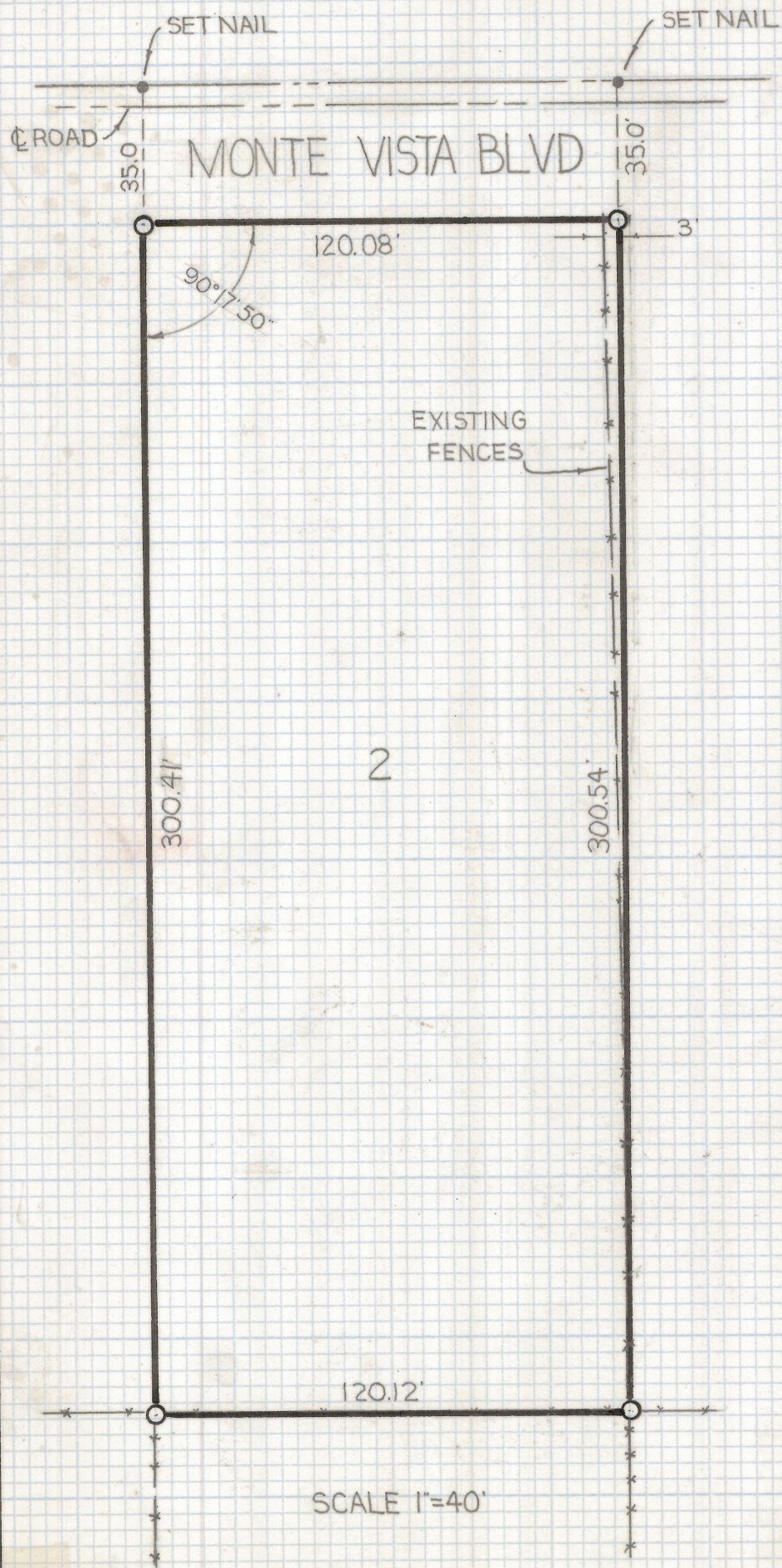


DISCLAIMER:

This unrecorded Record of Survey was donated to the City of Tucson. The City of Tucson provides this data for your personal use "as is." Additionally, the City of Tucson provides this information with the understanding that it is not guaranteed to be accurate, correct or complete and conclusions drawn from such information are the responsibility of the user.



RESULTS OF SURVEY

OF LOT 2 BLOCK 5 LINCOLN PARK ADDITION AS RECORDED
 IN BOOK 5 OF MAPS AND PLATS AT PAGE 29 RECORDED IN
 THE OFFICE OF THE PIMA COUNTY RECORDER PIMA
 COUNTY ARIZONA

NOTES

1) INDICATES SET 1/2" PIN MKD L.S. 4680 UNLESS NOTED

Z-2019-138

ROBERT F. MELLEN
 REGISTERED LAND SURVEYOR
 TUCSON, ARIZONA
 JOB# 79-132