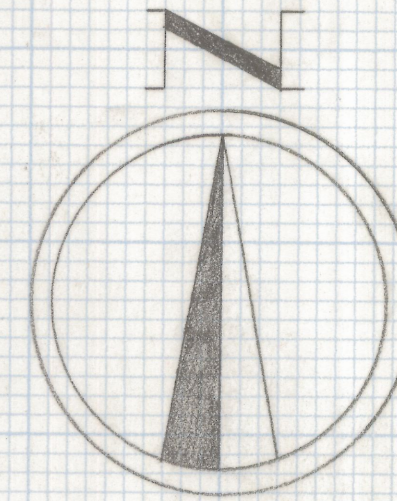


# **DISCLAIMER:**

**This unrecorded Record of Survey was donated to the City of Tucson. The City of Tucson provides this data for your personal use "as is." Additionally, the City of Tucson provides this information with the understanding that it is not guaranteed to be accurate, correct or complete and conclusions drawn from such information are the responsibility of the user.**

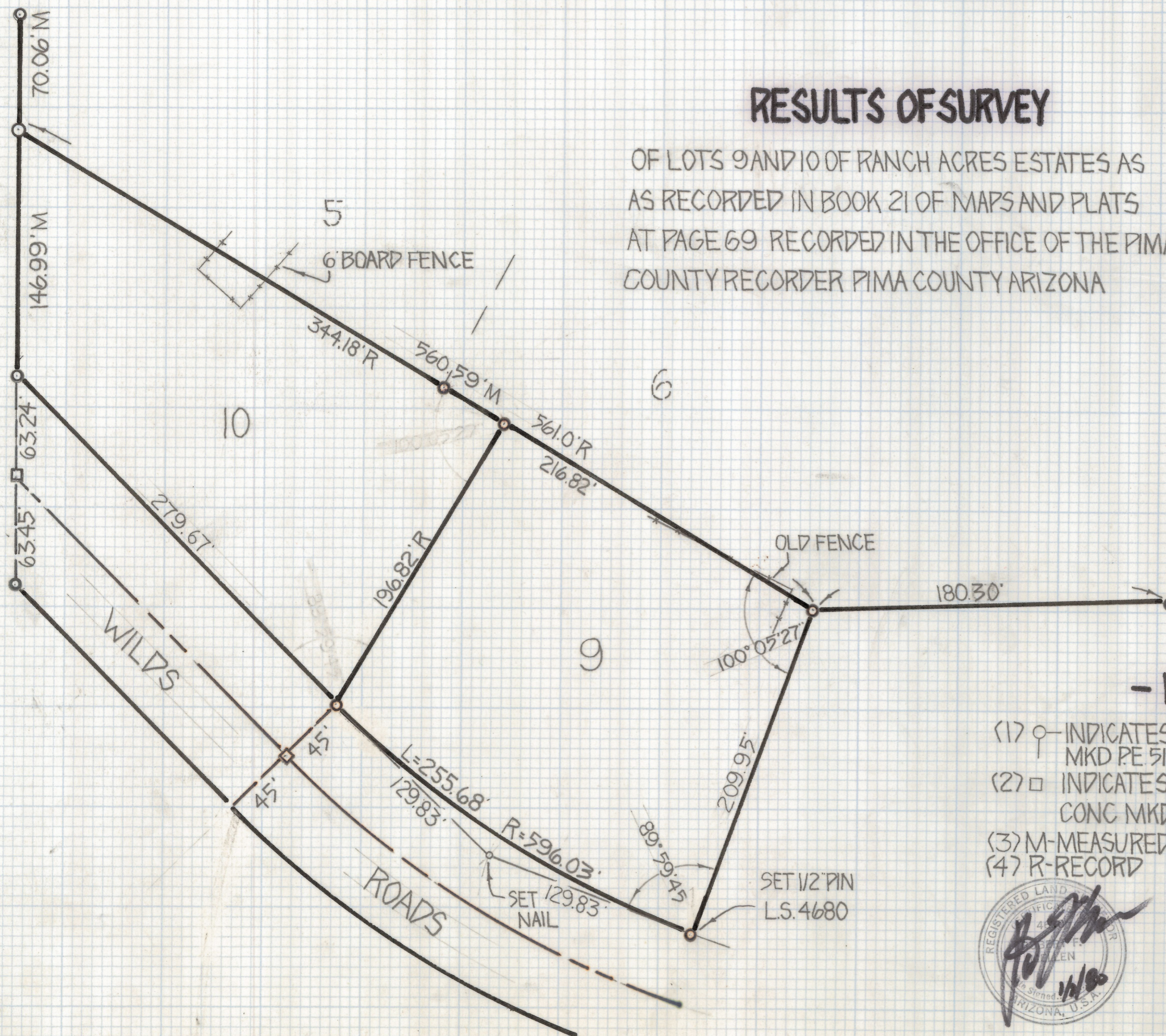




SCALE 1"=60'

# RESULTS OF SURVEY

OF LOTS 9 AND 10 OF RANCH ACRES ESTATES AS  
AS RECORDED IN BOOK 21 OF MAPS AND PLATS  
AT PAGE 69 RECORDED IN THE OFFICE OF THE PIMA  
COUNTY RECORDER PIMA COUNTY ARIZONA



## - NOTES -

- (1) ○ INDICATES FOUND 1/2" PIN UNLESS NOTED MKD PE 5178
- (2) □ INDICATES FOUND S.M. 2" BRASS PLUG IN CONC MKD PE 5718
- (3) M-MEASURED
- (4) R-RECORD



2-2019-142

ROBERT F MELLEN  
REGISTERED LAND SURVEYOR  
TUCSON, ARIZONA  
JOB # 79136