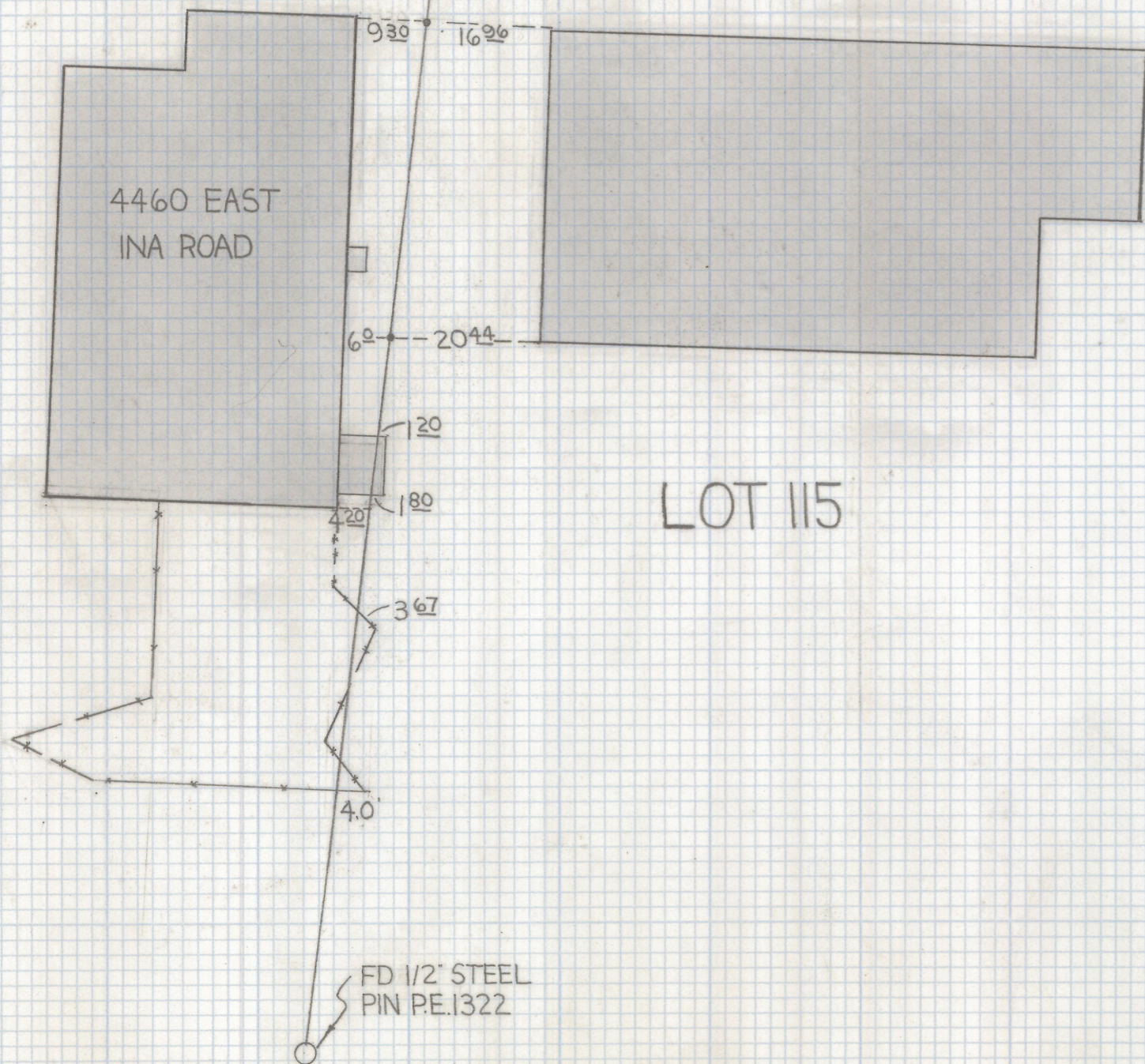


# **DISCLAIMER:**

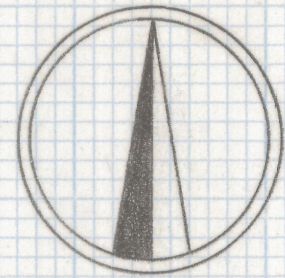
**This unrecorded Record of Survey was donated to the City of Tucson. The City of Tucson provides this data for your personal use "as is." Additionally, the City of Tucson provides this information with the understanding that it is not guaranteed to be accurate, correct or complete and conclusions drawn from such information are the responsibility of the user.**

LOT 116



FD 1/2" STEEL  
PIN PE.1322

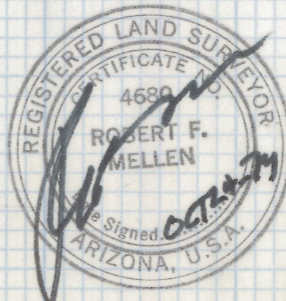
FD 58" PIN



SCALE 1"=20'

### RESULTS OF SURVEY

OF THE LINE BETWEEN LOTS 115 AND 116  
 OF CORONADO FOOTHILLS ESTATES AS  
 RECORDED IN BOOK 16 OF MAPS AND PLATS  
 AT PAGE 25 RECORDED IN THE OFFICE OF  
 THE PIMA COUNTY RECORDER PIMA COUNTY  
 ARIZONA



**2-2019-150**  
 ROBERT F MELLEN  
 REGISTERED LAND SURVEYOR  
 TUCSON, ARIZONA  
 JOB# 79-149