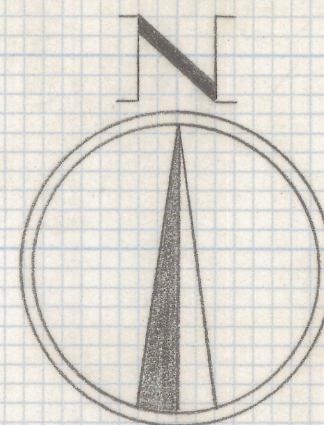
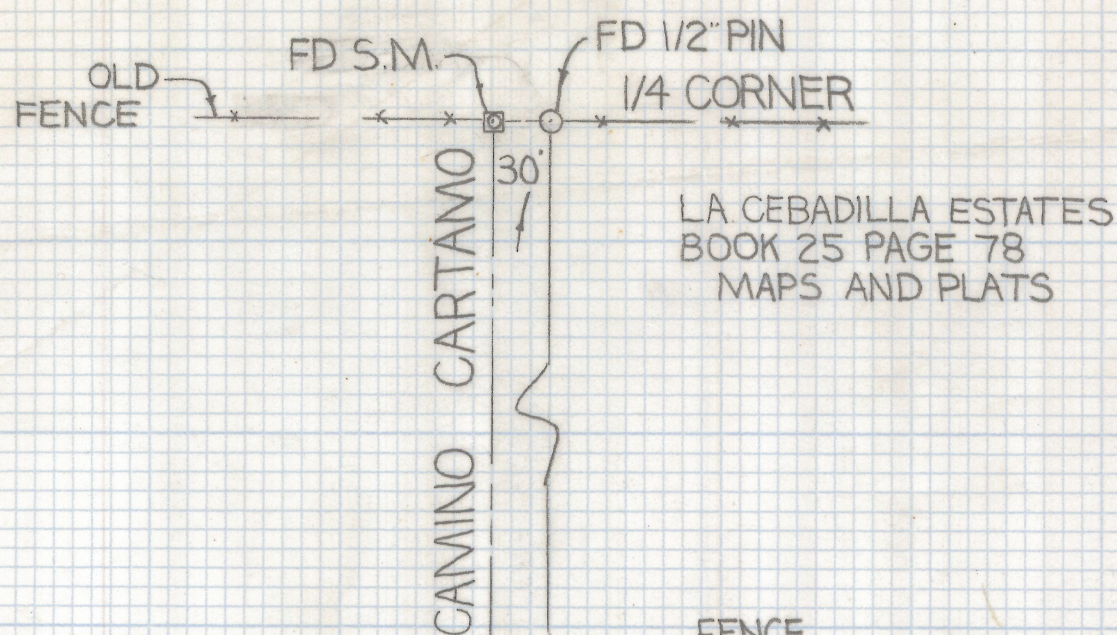


DISCLAIMER:

This unrecorded Record of Survey was donated to the City of Tucson. The City of Tucson provides this data for your personal use "as is." Additionally, the City of Tucson provides this information with the understanding that it is not guaranteed to be accurate, correct or complete and conclusions drawn from such information are the responsibility of the user.



SCALE 1"=100'



RESULTS OF SURVEY

OF A PORTION OF THE SOUTH ONE HALF
SECTION THREE, TOWNSHIP FOURTEEN SOUTH
OF RANGE SIXTEEN EAST, GILA AND SALT RIVER
BASE AND MERIDIAN, PIMA COUNTY, ARIZONA

— NOTES —

- 1) SURVEY REFERENCES
 - (1) CELLA, BARR, EVANS JOB# 73006-002
 - (2) HECTOR DURAND JOB# A-933-71
- 2) ϕ -INDICATES 1/2" STEEL PIN SET MKD L.S. 4680 UNLESS NOTED
- 3) M-MEASURED DISTANCE
- 4) O.I.P.-OPEN IRON PIPE
- 5) BASIS OF BEARINGS EAST LINE SOUTHWEST 1/4 SECTION 3
PER CELLA, BARR, EVANS MAP 73006-002



2-2019-151

ROBERT F. MELLEN
REGISTERED LAND SURVEYOR
TUCSON, ARIZONA
JOB# 79-150

