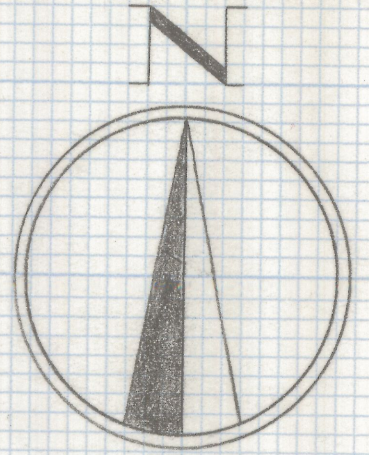
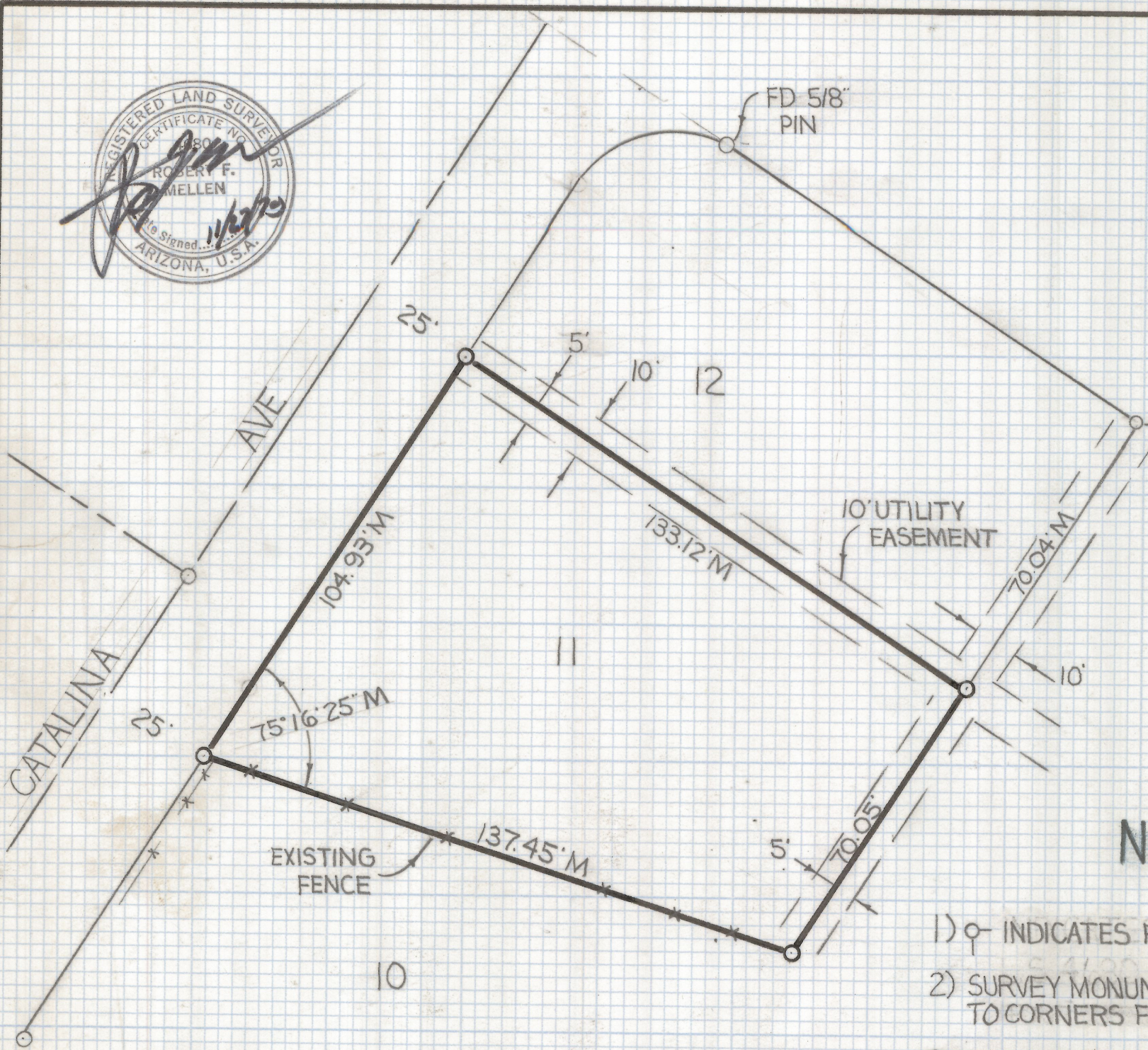


DISCLAIMER:

This unrecorded Record of Survey was donated to the City of Tucson. The City of Tucson provides this data for your personal use "as is." Additionally, the City of Tucson provides this information with the understanding that it is not guaranteed to be accurate, correct or complete and conclusions drawn from such information are the responsibility of the user.



SCALE 1"=30'



NOTES

- 1) ◉ INDICATES FOUND 5/8" STEEL PIN
- 2) SURVEY MONUMENTS DO NOT CONFORM TO CORNERS FOUND
- 3) M-MEASURED
- 4) R-RECORD

RESULTS OF SURVEY

OF LOT II OF ESTRELLA SUBDIVISION AS RECORDED
 IN BOOK 10 OF MAPS AND PLATS AT PAGE 75 AS
 RECORDED IN THE OFFICE OF THE PIMA COUNTY
 RECORDER PIMA COUNTY ARIZONA

2-2019-152

ROBERT F. MELLEN
 REGISTERED LAND SURVEYOR
 TUCSON, ARIZONA
 JOB# 79-152