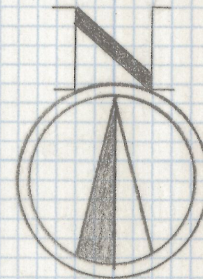
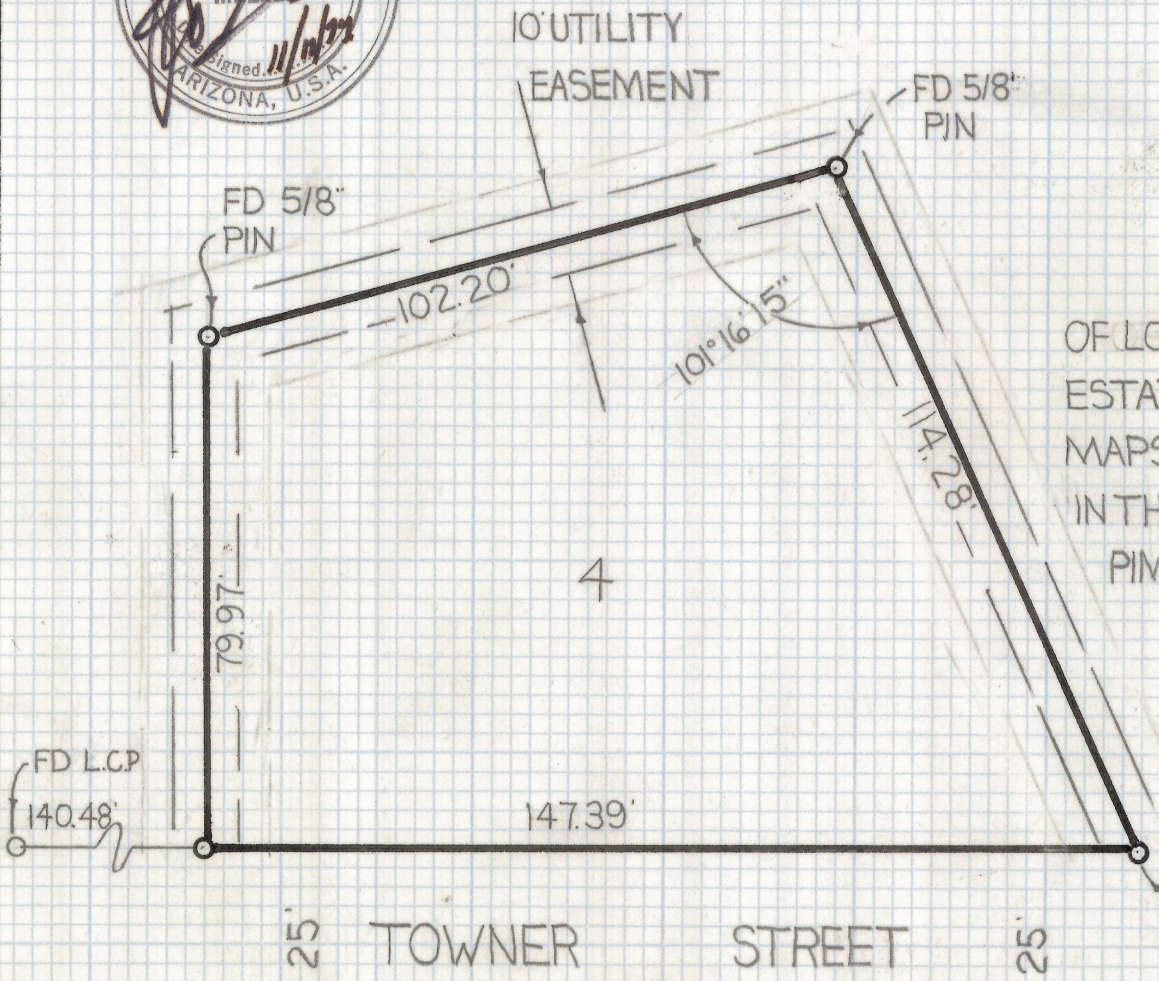


# **DISCLAIMER:**

**This unrecorded Record of Survey was donated to the City of Tucson. The City of Tucson provides this data for your personal use "as is." Additionally, the City of Tucson provides this information with the understanding that it is not guaranteed to be accurate, correct or complete and conclusions drawn from such information are the responsibility of the user.**



SCALE 1"=30'



RESULTS OF SURVEY  
OF LOT 4 BLOCK J NORTH CAMPBELL  
ESTATES AS RECORDED IN BOOK 9 OF  
MAPS AND PLATS AT PAGE 12 RECORDED  
IN THE OFFICE OF THE PIMA COUNTY RECORDER  
PIMA COUNTY RECORDER

NOTES

- 1) INDICATES SET 1/2" PIN MKD L.S. 4680 UNLESS NOTED
- 2) LCP - LEAD CAP PIPE

**Z-2019-153**

ROBERT F. MELLEN  
REGISTERED LAND SURVEYOR  
TUCSON, ARIZONA  
JOB # 79-153