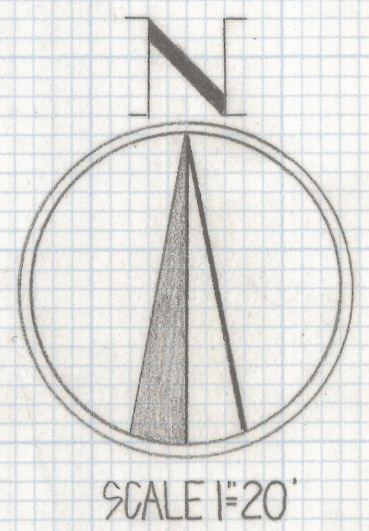
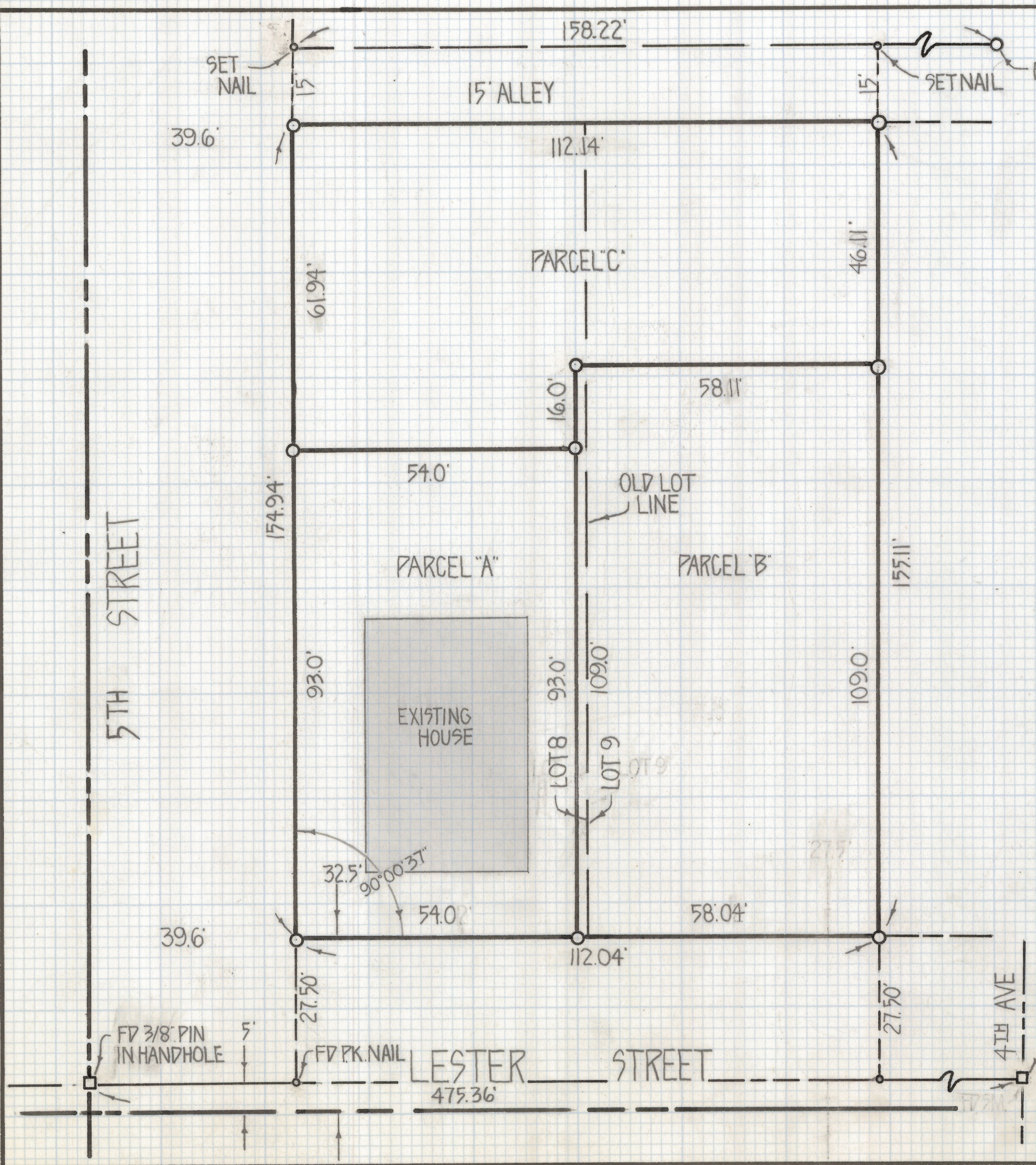


DISCLAIMER:

This unrecorded Record of Survey was donated to the City of Tucson. The City of Tucson provides this data for your personal use "as is." Additionally, the City of Tucson provides this information with the understanding that it is not guaranteed to be accurate, correct or complete and conclusions drawn from such information are the responsibility of the user.

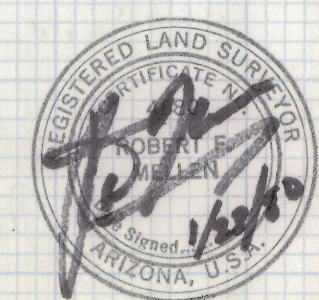


RESULTS OF SURVEY

OF LOTS 8 AND 9 BLOCK 16 OF TUCSONS HEIGHTS
 AS RECORDED IN BOOK 2 OF MAPS AND PLATS
 AT PAGE 18 IN THE OFFICE OF THE PIMA COUNTY
 RECORDER, PIMA COUNTY ARIZONA

— NOTES —

(17) indicates SET 1/2" PIN MKD L.S. 4680 UNLESS NOTED



2-2019-156
 ROBERT F. MELLEN
 REGISTERED LAND SURVEYOR
 TUCSON, ARIZONA
 JOB # 79-157