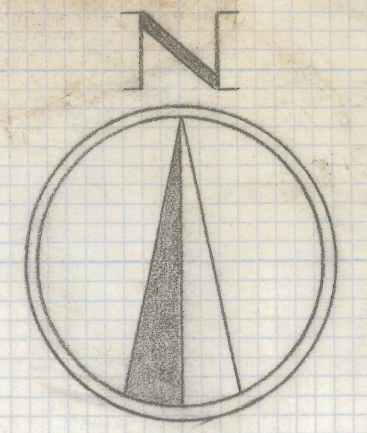


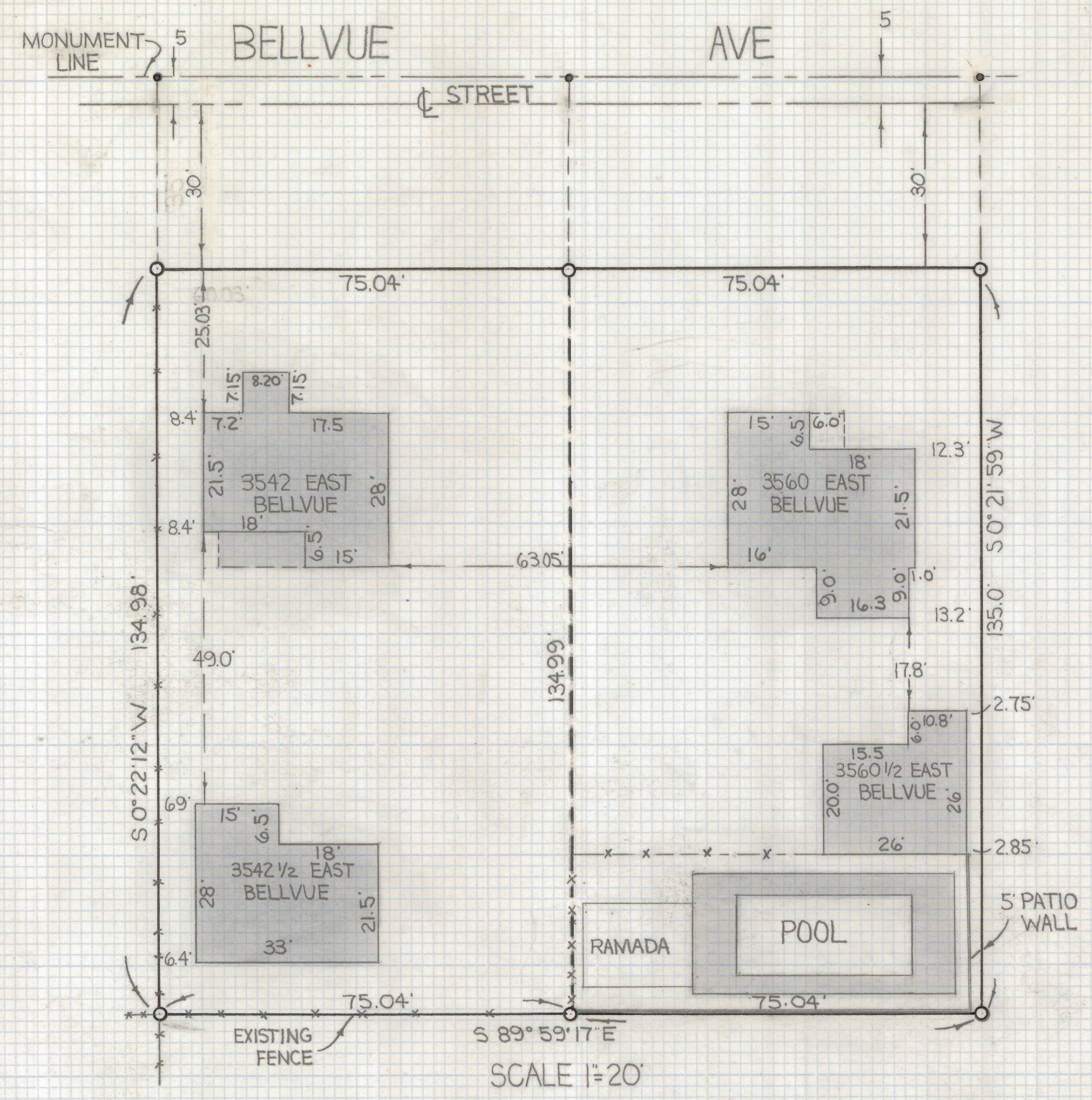
# **DISCLAIMER:**

**This unrecorded Record of Survey was donated to the City of Tucson. The City of Tucson provides this data for your personal use "as is." Additionally, the City of Tucson provides this information with the understanding that it is not guaranteed to be accurate, correct or complete and conclusions drawn from such information are the responsibility of the user.**



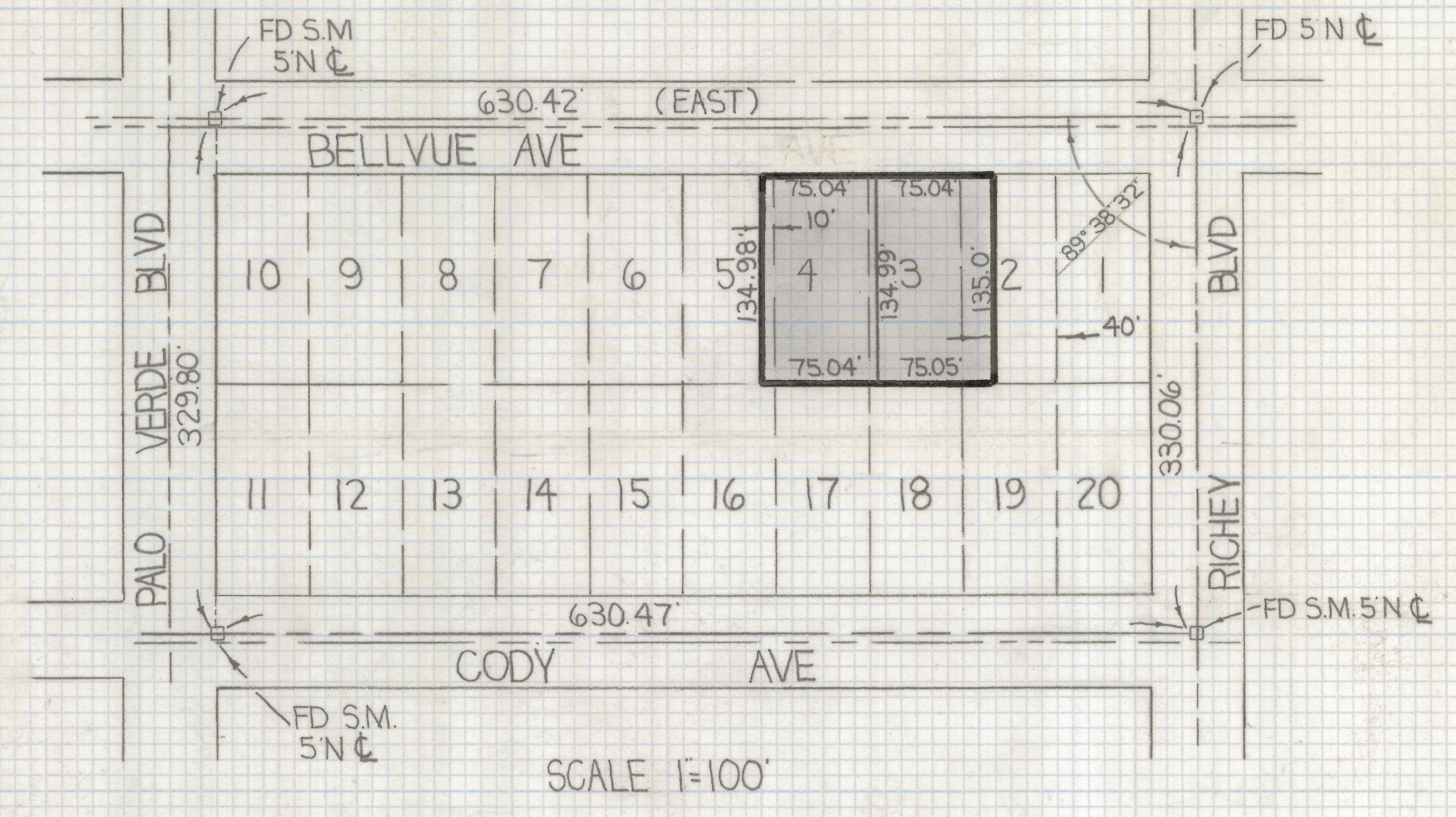


SCALES AS NOTED



**RESULTS OF SURVEY**

OF A PORTION OF LOTS 2, 3, 4 AND 5 OF SPEEDWAY PARK ANNEX  
 RECORDED IN BOOK 5 OF MAPS AND PLATS AT PAGE 40 RECORDED  
 IN THE OFFICE OF THE PIMA COUNTY RECORDER PIMA COUNTY  
 ARIZONA



**— NOTES —**

- 1)  $\circ$  INDICATES SET 1/2" STEEL PIN MKD L.S. 4680 UNLESS NOTED
- 2) EAST ASSUMED AS BEARING FOR BELLVUE AVE
- 3)  $\bullet$  INDICATES SET NAIL



**2-2019-157**  
 ROBERT F. MELLEN  
 REGISTERED LAND SURVEYOR  
 TUCSON, ARIZONA  
 JOB# 79-158