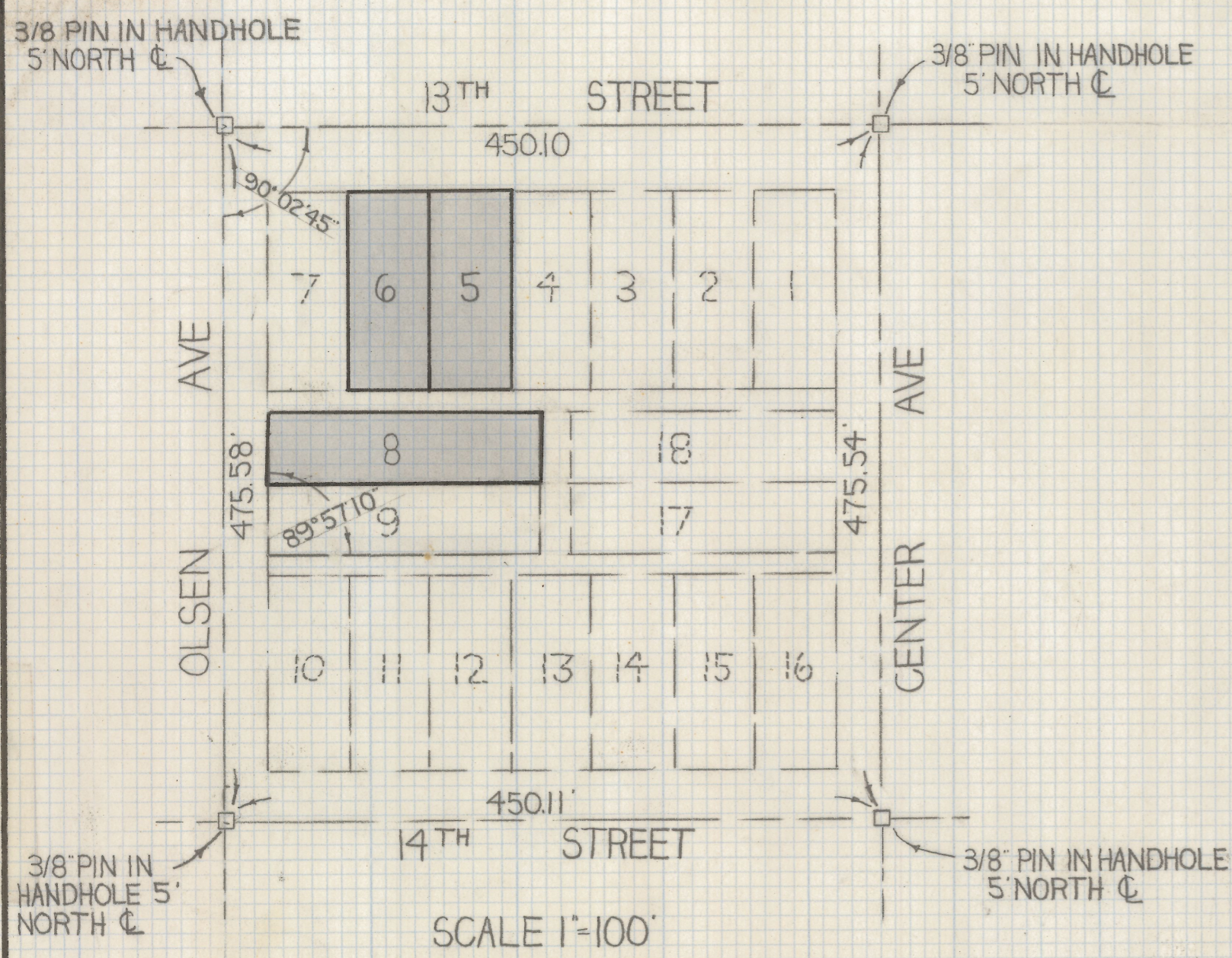
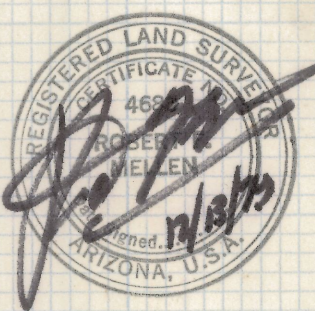
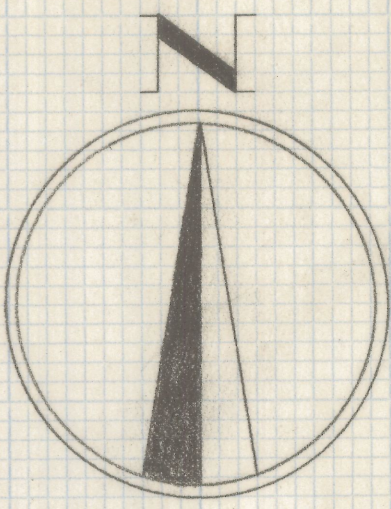
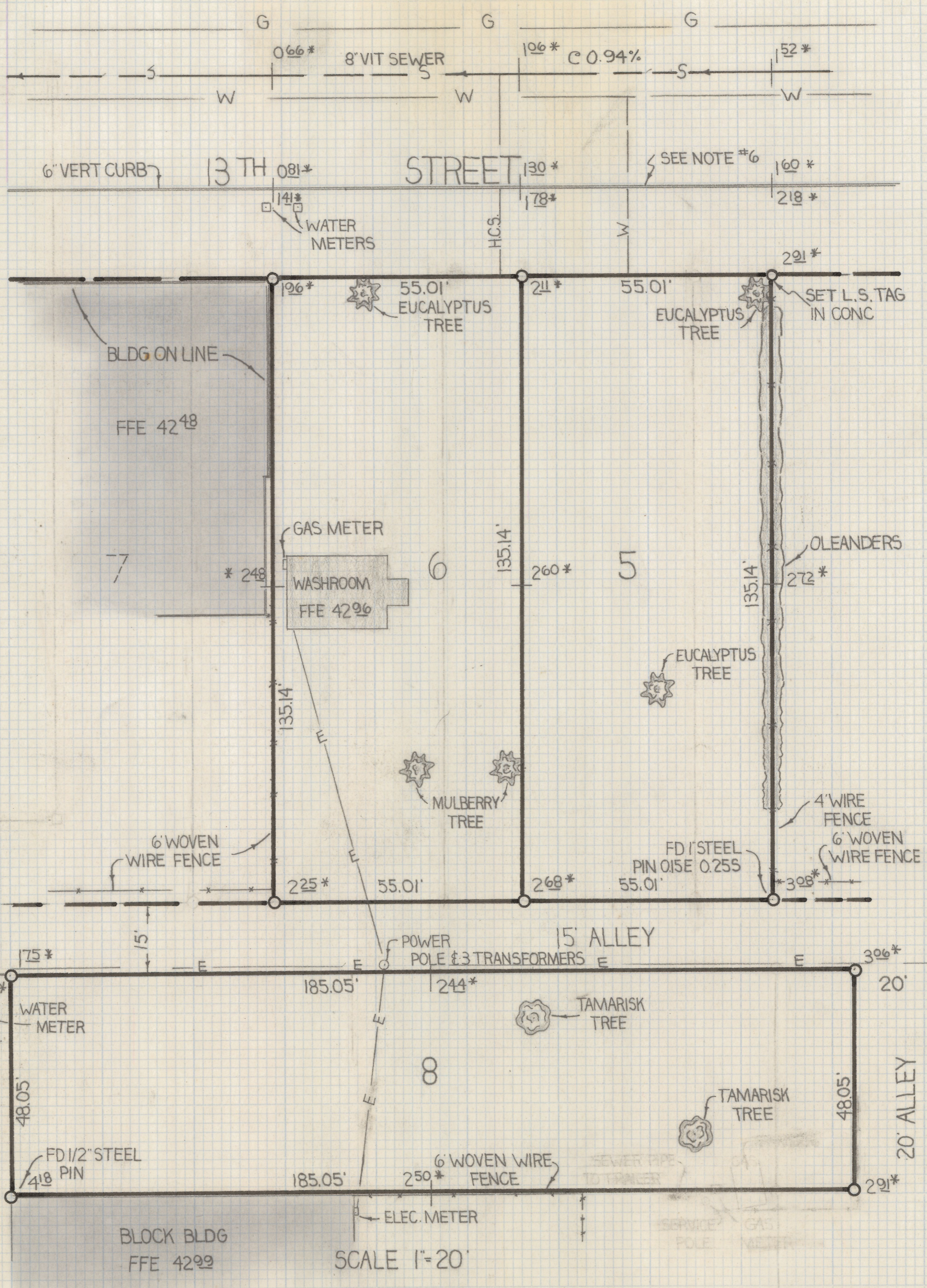


DISCLAIMER:

This unrecorded Record of Survey was donated to the City of Tucson. The City of Tucson provides this data for your personal use "as is." Additionally, the City of Tucson provides this information with the understanding that it is not guaranteed to be accurate, correct or complete and conclusions drawn from such information are the responsibility of the user.



SCALE 1"=100'



SCALE 1"=20'

RESULTS OF SURVEY

OF LOTS 5, 6, AND 8 BLOCK 16 OF AMERICAN VILLA AS RECORDED IN BOOK 3 OF MAPS AND PLATS AT PAGE 10 AS RECORDED IN THE OFFICE OF THE PIMA COUNTY RECORDER PIMA COUNTY ARIZONA

NOTES

- 1) \odot INDICATES SET 1/2" PIN MKD L.S. 4680 UNLESS NOTED
- 2) BENCH MARK DATUM CITY OF TUCSON PLAN N° I-571 TOP OF CURB RETURN ELEV 42.10
- 3) SEWER PLAN CITY OF TUCSON PLAN N° G-189
- 4) * INDICATES SPOT ELEVATION
- 5) THERE ARE EXISTING UNDERGROUND UTILITIES FROM AN OLD TRAILER PARK WHICH WERE NOT LOCATED
- 6) ALL CURBS FILLED WITH ASPALT TO FORM WEDGE CURB

2-2019-161
 ROBERT F MELLEN
 REGISTERED LAND SURVEYOR
 TUCSON, ARIZONA
 JOB # 79-163