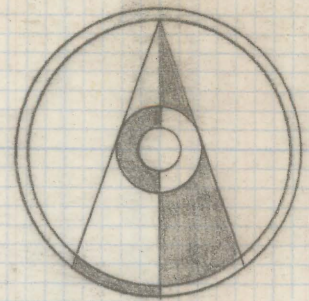


DISCLAIMER:

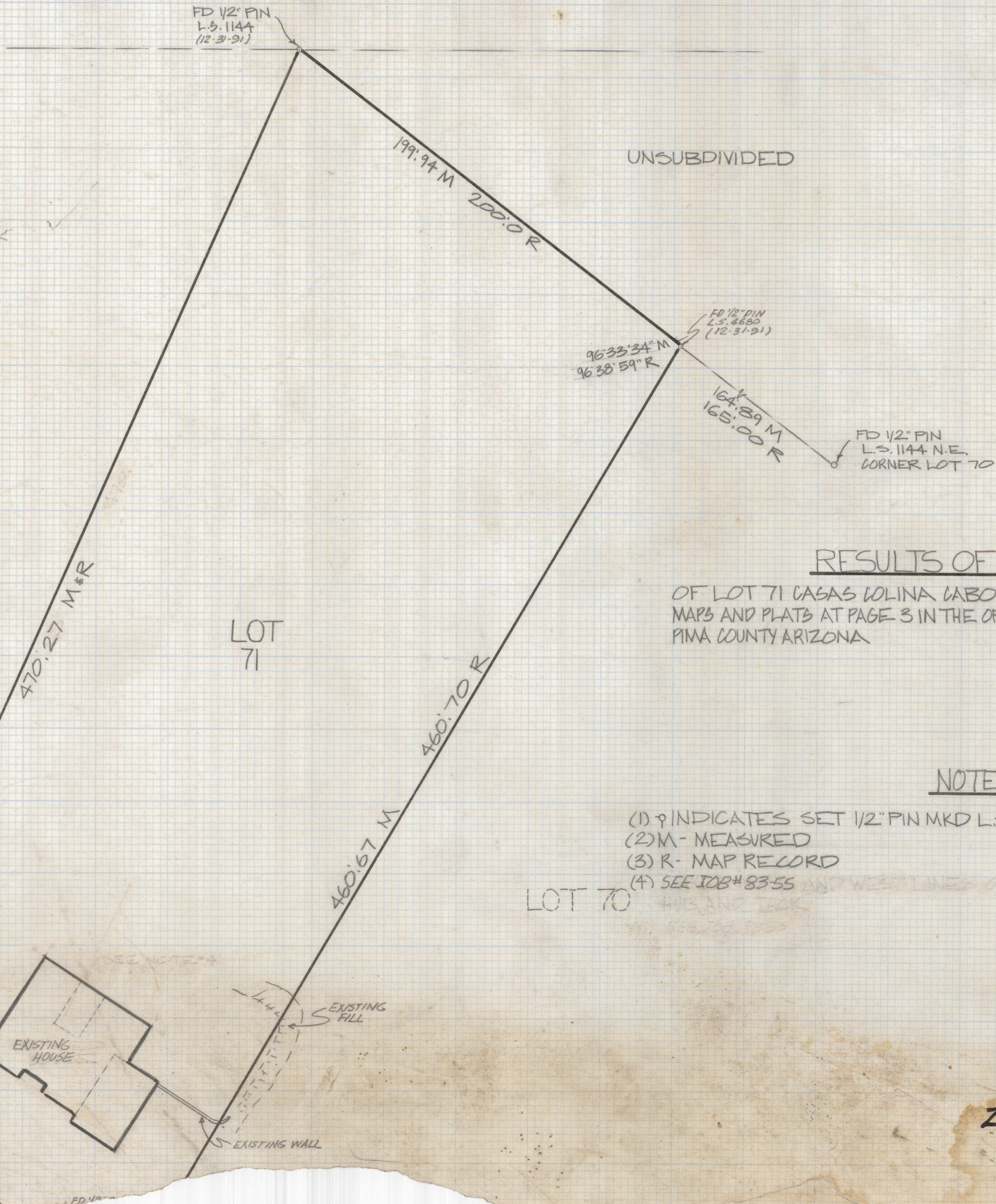
This unrecorded Record of Survey was donated to the City of Tucson. The City of Tucson provides this data for your personal use "as is." Additionally, the City of Tucson provides this information with the understanding that it is not guaranteed to be accurate, correct or complete and conclusions drawn from such information are the responsibility of the user.

CURVE DATA					
N°	RADIUS	DELTA	TANGENT	LENGTH	CHORD
1	460.0	1538'28"	95.02	109.52	109.26
2	370.0	5'26"03"	17.56	35.09	35.08



SCALE 1"=30'

LOT 72



RESULTS OF SURVEY

OF LOT 71 CASAS COLINA CABO N°2 RECORDED IN BOOK 28 OF MAPS AND PLATS AT PAGE 3 IN THE OFFICE OF THE PIMA COUNTY RECORDER PIMA COUNTY ARIZONA

NOTES

- (1) \circ INDICATES SET 1/2" PIN MKD L.S. 4680 UNLESS NOTED
- (2) M - MEASURED
- (3) R - MAP RECORD
- (4) SEE JOB # 83-55

LOT 70

Z-2019-169

