

**GENERAL NOTES (cont.)**

1. THE CONTRACTOR SHALL RETAIN THE SERVICES OF A REGISTERED LAND SURVEYOR TO PROVIDE THE CONSTRUCTION LAYOUT. THE SURVEYOR SHALL VERIFY THE KNOWN BENCHMARK AND COMPARE THE SITE CONDITIONS WITH THE PLANS AND SHALL NOTIFY THE OWNER OF ANY DISCREPANCIES OBSERVED SHOULD ANY BENCHMARK, GRADE OR DESIGN INDICATED ON THE PLANS BE SUSPECT. THE OWNER SHALL BE NOTIFIED OF SAID BENCHMARK, GRADE OR DESIGN PROBLEM AT LEAST TWENTY-FOUR (24) HOURS BEFORE CONSTRUCTION IS SCHEDULED TO BEGIN IN THE AFFECTED AREA.

2. UPON COMPLETION OF THE WORK, THE CONTRACTOR AND HIS SURVEYOR SHALL CERTIFY IN WRITING TO THE OWNER THAT THE PROJECT'S CIVIL ENGINEERING IMPROVEMENTS WERE STAKED AND BUILT IN SUBSTANTIAL CONFORMANCE TO THE LINES AND GRADES SHOWN. UNLESS NOTED OTHERWISE, SUBSTANTIAL CONFORMANCE SHALL MEAN THAT ROAD INFRASTRUCTURE HAS BEEN CONSTRUCTED TO WITHIN 0.10± FEET AS DESIGNED BY THE ENGINEER. ROAD AND PEDESTRIAN FEATURES SHALL BE WITHIN 0.25 FEET OF SPECIFIED POSITION.

3. DESIGN DATA (KINO PARKWAY)  
POSTED SPEED LIMIT = 40 MPH  
DESIGN SPEED = 50 MPH  
AVERAGE DAILY TRAFFIC = 32,500 VPD (APPROX.)  
FUTURE AVERAGE DAILY TRAFFIC = <32,500 VPD  
AVERAGE PROJECT ELEVATION = 2,495 FT

4. LENGTH OF PROJECT  
STA 11+95.38 TO STA 15+54.26  
NET LENGTH = 358.88 FT (0.07 MILES)

5. AREA OF DISTURBANCE  
STATION 11+95.38 - 15+54.26 ± = 358.88'  
WIDTH = VARIES, 7' - 32'  
AREA = 5,830 ± SF

6. UTILITY COMPANIES:  
WATER - TUCSON WATER  
SEWER - PIMA COUNTY REGIONAL WASTEWATER RECLAMATION DEPARTMENT  
ELECTRIC - TUCSON ELECTRIC POWER  
GAS - SOUTHWEST GAS

**PAVING + GRADING NOTES**

1. ALL CONSTRUCTION AND TEST METHODS SHALL CONFORM TO THE PIMA ASSOCIATION OF GOVERNMENTS (PAG) STANDARD SPECIFICATIONS FOR PUBLIC IMPROVEMENTS, VOLUMES 1 AND 2, 2015 EDITION, EXCEPT AS MODIFIED HEREIN. (MEASUREMENT AND PAYMENT TERMS DO NOT APPLY).

2. AGGREGATE BASE COURSE SHALL CONFORM TO PAG STANDARD SPECIFICATION SECTION 303.

3. ASPHALTIC CONCRETE SHALL CONFORM TO PAG STANDARD SPECIFICATION SECTION 406, MIX NO. 2.

4. ALL CONCRETE SHALL CONFORM TO PAG STANDARD SPECIFICATION SECTION 1006, CLASS B, 2500 PSI COMPRESSIVE STRENGTH AT 28 DAYS, OR CLASS S, 3000 PSI COMPRESSIVE STRENGTH AT 28 DAYS, UNLESS OTHERWISE SPECIFIED.

5. PAVEMENT SECTION DESIGN DOCUMENTATION ARE IN ACCORDANCE TO THE APPROVED GEOTECHNICAL REPORT, BRIDGES III, SPINE ROAD AND PARKING LOTS, PATTISON ENGINEERING LLC, PROJECT NO. 19-122.

6. ALL DRAINAGE INFRASTRUCTURES INDICATED ON THE PLANS ARE IN ACCORDANCE TO THE APPROVED DRAINAGE REPORT APPROVED BY DEVELOPMENT SERVICES DEPARTMENT.

7. ALL CHANGES TO THESE PLANS MUST BE CLEARED BY THE CITY OF TUCSON CITY ENGINEER'S PERMITS AND CODES SECTION, PRIOR TO CONSTRUCTION.

8. THE CITY SHALL NOT BE HELD LIABLE FOR ANY ERRORS AND/OR OMISSIONS ON THESE PLANS. ITEMS NOT MEETING CITY STANDARDS SHALL BE REPAIRED/REPLACED AT NO COST TO THE CITY.

9. THE ENGINEER OF RECORD SHALL SUBMIT TO THE CITY FOR REVIEW ANY CHANGES TO THE APPROVED PLANS PRIOR TO CONSTRUCTION. ADDITIONALLY, THE ENGINEER OF RECORD SHALL CERTIFY ALL CHANGES MEETING ALL APPLICABLE STANDARDS, CODES, AND ORDINANCES.

10. AN EXCAVATION PERMIT SHALL BE OBTAINED FROM THE CITY OF TUCSON TRANSPORTATION DEPARTMENT PRIOR TO ANY WORK WITHIN THE PUBLIC RIGHT-OF-WAY.

11. A PRE-CONSTRUCTION FIELD MEETING SHALL BE CONDUCTED WITH THE CITY OF TUCSON TRANSPORTATION INSPECTOR PRIOR TO ANY WORK WITHIN THE PUBLIC RIGHT-OF-WAY.

12. THE EXTENT AND TYPE OF SURFACE TREATMENTS/REPAIRS INDICATED ON THE PLANS MAY NOT BE ALL INCLUSIVE OF THE WORK THAT IS NEEDED. ADDITIONAL REPAIRS, PAVING, OR REPLACEMENT MAY BE NEEDED DEPENDING ON FIELD CONDITIONS.

13. THE CONTRACTOR SHALL CONTACT AND/OR COORDINATE ANY WORK WITH COT STREETS & TRAFFIC MAINTENANCE DIVISION, MEDIUM ISLAND MAINTENANCE SECTION (520-791-5279, EXT. 234) PRIOR TO DISTURBING ANY COT/DOT LANDSCAPING OR IRRIGATION SYSTEMS. ADDITIONALLY, THE CONTRACTOR SHALL REPAIR OR REPLACE ANY DISTURBED COT/DOT LANDSCAPING OR IRRIGATION SYSTEMS, INCLUDING REPLACEMENT OF ANY DAMAGED PLANTS. CONTACT GARY WITTEWAT AT 520-400-2645 FOR INSPECTION AND PERMITS FOR LANDSCAPING. FOR IRRIGATION REMOVAL/REPLACEMENT CONTACT PAUL ROSENBOOM AT 520-791-3154.

14. THE P.I.A. INSPECTOR SHALL VERIFY THAT THE "SAW-CUT" LINE IS LOCATED WITHIN COMPETENT PAVEMENT. ADJUSTMENTS TO THE PLAN SHALL BE DOCUMENTED AND AS-BUILT; A ONE (1) FOOT MINIMUM SHALL BE PROVIDED.

**PAVING + GRADING NOTES (cont.)**

15. CONTRACTOR SHALL OBTAIN ALL OTHER PERMITS AS REQUIRED BY LOCAL, STATE, AND FEDERAL REQUIREMENTS.

16. A COPY OF THE APPROVED PLAN SHALL BE KEPT IN AN EASILY ACCESSIBLE LOCATION ON THE SITE AT ALL TIMES DURING CONSTRUCTION.

17. SIGNAGE AND STRIPING SHOULD BE COORDINATED WITH TRAFFIC ENGINEERING AND INSTALLED AT NO EXPENSE TO THE PUBLIC. CALL TRAFFIC ENGINEERING AT 791-4259 PRIOR TO THE INSTALLATION OR REMOVAL OF STRIPING AND SIGNAGE.

18. UPON COMMENCEMENT OF WORK, TRAFFIC CONTROL DEVICES SHALL BE POSTED AND MAINTAINED BY THE CONTRACTOR UNTIL SUCH TIME AS THE WORK IS COMPLETED. ALL WARNING SIGNS, BARRICADES, ETC. SHALL BE IN ACCORDANCE WITH THE MANUAL ON UNIFORM TRAFFIC CONTROL DEVICES ADOPTED BY THE STATE OF ARIZONA PURSUANT TO A.R.S. 28-650. CONTACT TRAFFIC ENGINEERING AT 791-4259, 48 HOURS PRIOR TO PLACING OR REMOVING ANY SAID TRAFFIC CONTROL DEVICES.

19. CONTRACTOR SHALL CALL BLUE STAKE AS MANDATED BY THE ARIZONA REVISED STATUTES AT 1-800-782-5348 BEFORE ANY CONSTRUCTION BEGINS TO VERIFY LOCATION OF EXISTING UTILITIES SHOWN OR NOT SHOWN. EXISTING UTILITY LOCATIONS SHOWN HEREON ARE ONLY APPROXIMATE. IT IS THE CONTRACTOR'S RESPONSIBILITY TO CONFIRM HORIZONTAL AND VERTICAL LOCATION OF ALL UTILITIES WITHOUT DAMAGING SAME. DAMAGED UTILITIES SHALL BE REPAIRED AT NO EXPENSE TO THE CITY.

20. THE CONTRACTOR SHALL CONTACT AND/OR COORDINATE ANY WORK WITH COT STREETS & TRAFFIC MAINTENANCE DIVISION, ELECTRIC SHOP 791-3154 PRIOR TO RELOCATION OR PLACEMENT OF ANY STREET LIGHTING OR TRAFFIC FACILITIES. CONTACT ERNIE ENCINAS AT 791-3154 FOR STREET LIGHTING/TRAFFIC SIGNAL PLAN REVIEW.

21. THE CONTRACTOR SHALL COMPLY WITH ALL APPLICABLE OCCUPATIONAL SAFETY AND HEALTH ADMINISTRATION REGULATIONS.

**SURVEY NOTES**

1. THE SURVEY FOR THIS PROJECT WAS PERFORMED BY:  
CYPRESS CIVIL DEVELOPMENT  
2030 EAST SPEEDWAY BOULEVARD, SUITE 110  
TUCSON, ARIZONA 85719  
ATTN: MR. JOHN D. REYES, AZ RLS #41603  
PH: (520) 499-2456

2. THE BASIS OF BEARINGS FOR THIS PLAT IS THE MONUMENTED EAST LINE OF THE NORTHEAST QUARTER OF SECTION 30, T.14 S., R. 14 E., G.&S.R.M., AS RECORDED IN BOOK 65 AT PAGE 2 OF MAPS AND PLATS, AND SEQUENCE 20173560655, RECORDS OF PIMA COUNTY, ARIZONA.  
THE BEARING OF SAID LINE IS **S 00°40'44" E**.

3. THE BASIS OF ELEVATIONS FOR THIS PROJECT IS THE CENTER OF THE 1/2" BRASS PIN IN CASTING LOCATED IN THE INTERSECTION OF S. CAMPBELL AVE. AND E. 36TH STREET AS RECORDED IN COT FB 2254, PAGE 32. THE ELEVATION OF SAID BENCHMARK IS **2481.00'**, NAVD 88 DATUM.

**UTILITY NOTE**

UTILITY LOCATIONS, AS SHOWN ON THE PLANS, WERE COMPILED AND ARE PRESENTED BASED UPON PRELIMINARY INFORMATION AVAILABLE TO CYPRESS CIVIL DEVELOPMENT. UTILITY LOCATIONS AS SHOWN ARE NOT INTENDED TO BE EXACT OR COMPLETE AND CYPRESS CIVIL DEVELOPMENT DOES NOT ACCEPT LIABILITY OR RESPONSIBILITY FOR ANY INACCURACIES IN THE UTILITY LOCATIONS OR ANY UTILITY RELOCATIONS THAT MAY BE NECESSARY. PRIOR TO EXCAVATION, ARIZONA STATUTES REQUIRE THAT ANYONE WHO INTENDS TO EXCAVATE MUST PROVIDE TWO FULL WORKING DAYS NOTICE TO THE OWNERS OF ALL UTILITIES WITHIN THE PROJECT AREA. EXCAVATORS SHOULD CONTACT "ARIZONA BLUE STAKE" @ 1-800-782-5348 TWO (2) FULL WORKING DAYS PRIOR TO EXCAVATION. SATURDAYS, SUNDAYS, AND STATE HOLIDAYS ARE NOT CONSIDERED WORKING DAYS. ALSO BE ADVISED THAT THERE MAY BE OTHER UTILITIES IN THE PROJECT AREA THAT ARE NOT MEMBERS OF "ARIZONA BLUE STAKE". THE CONTRACTOR IS RESPONSIBLE TO POTHOLE ALL UTILITIES (SHOWN OR NOT SHOWN ON THE PLANS) MARKED BY BLUE STAKE PRIOR TO COMMENCING CONSTRUCTION OPERATIONS.

**STANDARD NOTES FOR PLANTING IN R.O.W.**

1. IT IS THE OWNER'S RESPONSIBILITY TO KEEP THE SIGHT VISIBILITY TRIANGLES (SVT), AND THE PEDESTRIAN ACCESS AREA CLEAR OF VEGETATION AT ALL TIMES.

2. IT IS THE OWNER'S RESPONSIBILITY TO KEEP VEGETATION FROM GROWING PAST THE CURB LINE CLEAR, AND KEEP A 15' HIGH CLEAR ZONE OVER THE TRAVEL LANE.

3. FINAL PLANT LOCATIONS MUST BE IN COMPLIANCE WITH ALL UTILITY SETBACK REQUIREMENTS.

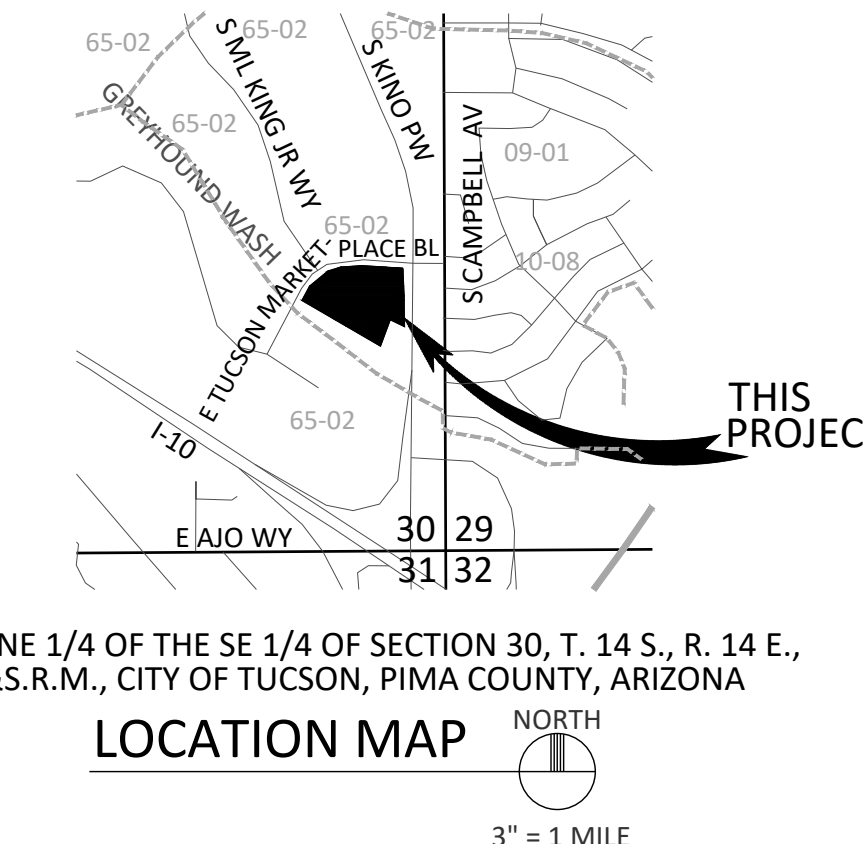
4. THE OWNER UNDERSTANDS THAT IF THE CITY OF TUCSON TRANSPORTATION DEPARTMENT OR ANY UTILITY COMPANY NEEDS TO WORK WITHIN THE RIGHT-OF-WAY LANDSCAPED AREA, PLANTS AND IRRIGATION MAY BE DESTROYED WITHOUT REPLACEMENT OR REPAIR.

5. THE OWNER TAKES FULL LIABILITY FOR THIS LANDSCAPE AND IRRIGATION, AND ANY DAMAGE TO ROADWAY, SIDEWALK AND UTILITIES.

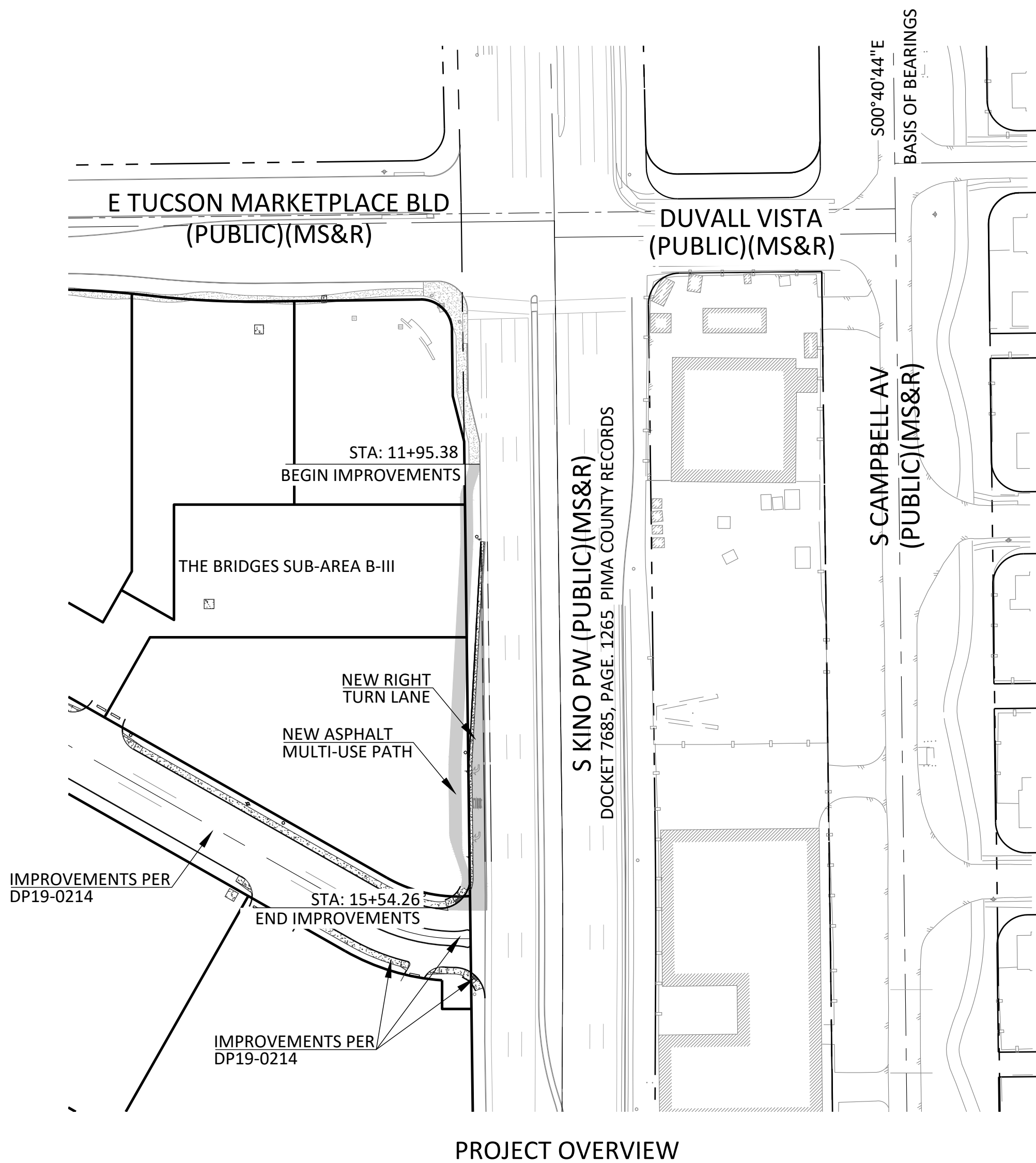
6. THE ONLY PRIVATE IRRIGATION EQUIPMENT THAT IS ALLOWED WITHIN THE RIGHT-OF-WAY ARE LATERAL LINES, TUBING AND EMITTERS THAT ARE NOT UNDER CONSTANT PRESSURE. ALL OTHER EQUIPMENT MUST BE ON PRIVATE PROPERTY (EXCLUDING WATER METER).

7. CONTRACTOR TO OBTAIN A RIGHT-OF-WAY EXCAVATION PERMIT PRIOR TO CONSTRUCTION WITHIN THE RIGHT-OF-WAY.

# OFFSITE IMPROVEMENT PLAN for THE BRIDGES SUB-AREA B-III



SCALE: 1"=100'



PROJECT OVERVIEW

**LEGEND**

EXISTING	PROPOSED	
○	●	SURVEY MONUMENT
	⊠	SURVEY MONUMENT (IN R.O.W.)
- - - - -	—	SUBJECT PROPERTY BOUNDARY
- - - - -	—	RIGHT-OF-WAY
- - - - -	- - - - -	ROADWAY CENTERLINE
- - - - -	- - - - -	SECTION LINE
- - - - -	- - - - -	CONTOUR
—	—	SPOT ELEVATION
—	—	CURB
—	—	CONCRETE
—	—	PAINT STRIPE
—	—	SIGN
☼	☼	STREET/SITE LIGHT
—	—	STORM DRAIN PIPE
(SD)	(SD)	STORM DRAIN MANHOLE
—	—	WATER PIPE
SVT		SIGHT VISIBILITY TRIANGLE
R.O.W.		RIGHT-OF-WAY
CL		CENTERLINE
R		RADIUS
P		PAVEMENT (ASPHALT)
C		CONCRETE
TC		TOP OF CURB
FG		FINISHED GRADE
BCR; ECR		BEGIN CURB RADIUS; END CURB RADIUS
LT; RT		LEFT OFFSET; RIGHT OFFSET
FOC; BOC		FACE OF CURB; BACK OF CURB

<b>CONSTRUCTED BY:</b>	<b>RED-LINES BY:</b>	<b>RECORD DOCUMENT BY:</b>
CONSTRUCTION COMPANY	CONSTRUCTION ADMINISTRATOR NAME + COMPANY	AS-BUILT DESIGNER NAME & COMPANY
COMPLETION DATE	COMPLETION DATE	COMPLETION DATE

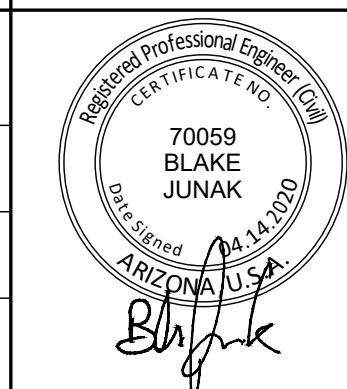


**ADMINISTRATIVE ADDRESS**  
3434 SOUTH KINO PARKWAY  
TUCSON, ARIZONA 85713  
**OWNER/DEVELOPER**  
BP BRIDGES PARTNERS, LLC  
20 EAST CONGRESS STREET, SUITE 300  
TUCSON, ARIZONA 85701  
ATTN: JUSTIN SMITH  
PH: (520) 323-1005  
E: jsmith@bourncompanies.com



2030 east speedway boulevard suite #110 tucson, arizona 85719 ph: 520.499.2456 e: info@cypresscivil.com

NO.	DATE	REVISION	BY



CYPRESS PROJECT NO: 19.076 DEPARTMENT OF TRANSPORTATION/ENGINEERING DIVISION cover sheet

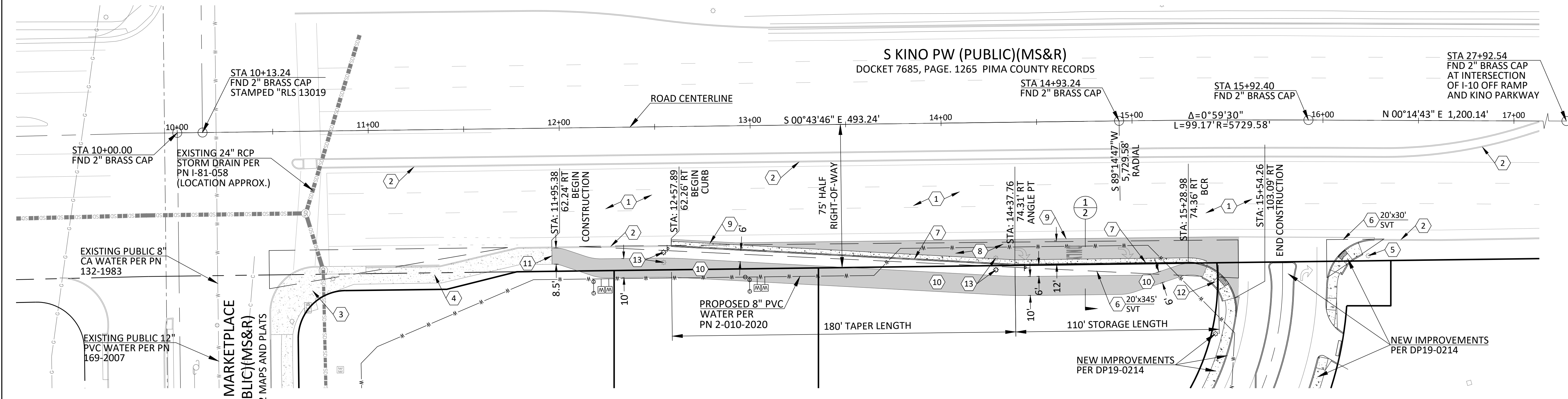
**OFFSITE IMPROVEMENT PLAN for THE BRIDGES B-III**

Approvals	Signatory	Date	
DESIGN SECTION/PERMITS AND CODES			Approved _____ 20__
TRAFFIC ENGINEERING			1 OF 4 TRANSPORTATION DIRECTOR
STREETS AND TRAFFIC MAINTENANCE			
ENGINEERING LANDSCAPE ARCH.			
ENGINEERING ADMINISTRATOR			REF. _____ SCALE: AS NOTED
DRAWN BY SER 2020	DSGN BY BJJ 2020	CHKD BY BJJ 2020	PLAN NO. _____

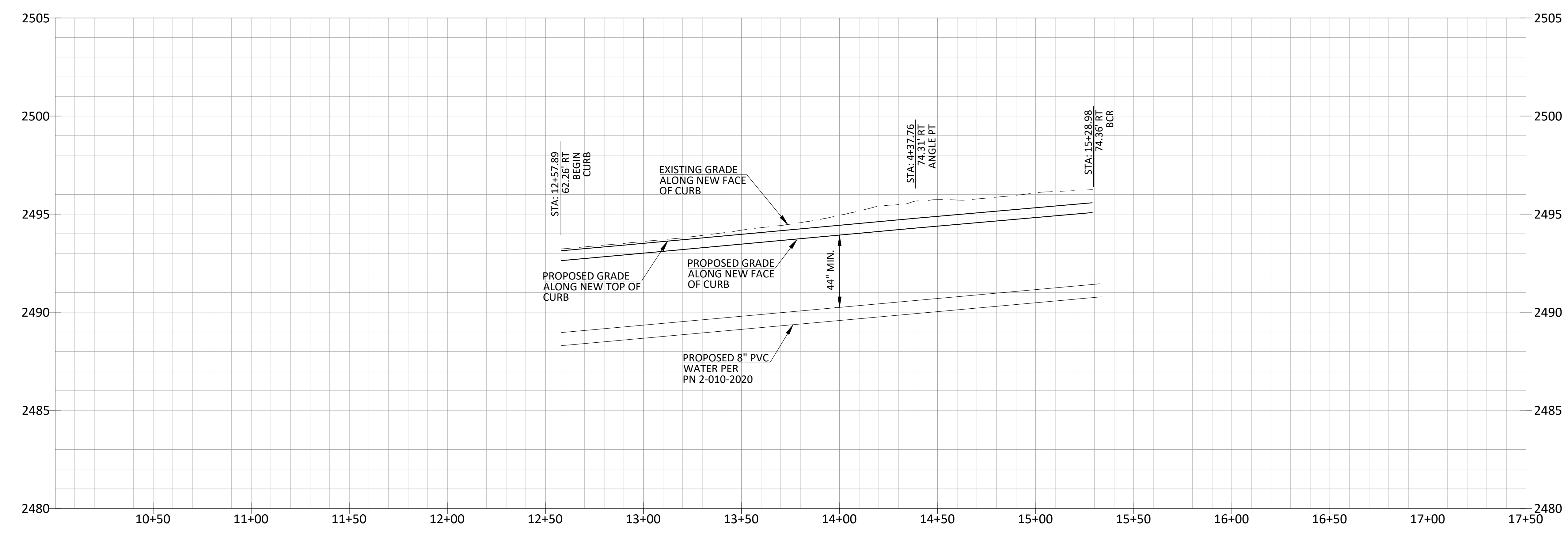
COT ACTIVITY NUMBER: T \_\_\_\_\_

SCALE: 1"=30'  
C.I.=1 FOOT

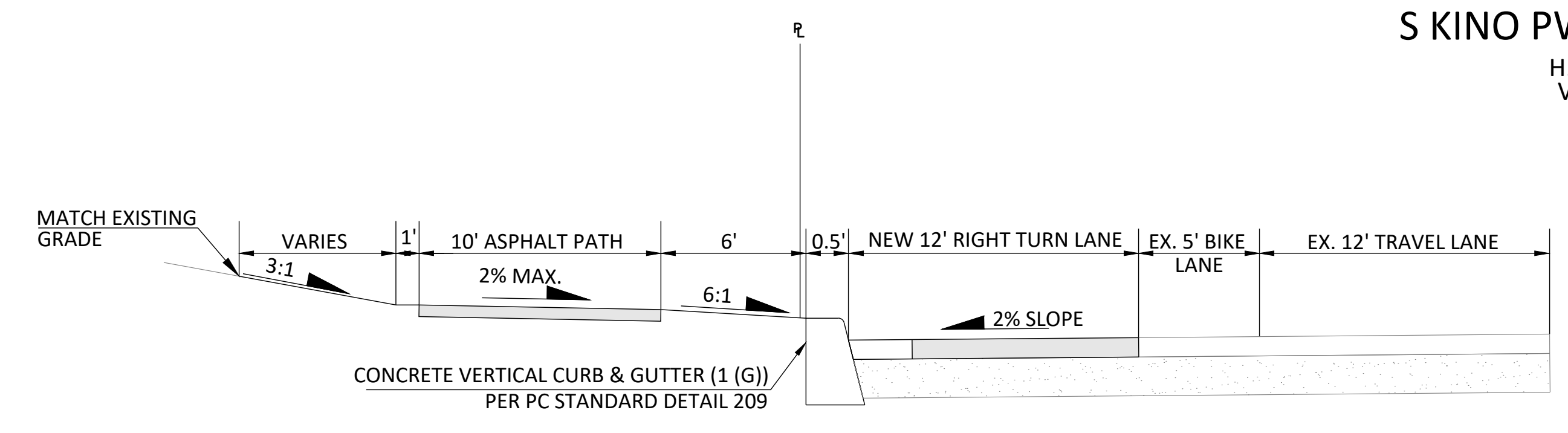
- SITE PLAN KEYNOTES**
- EXISTING ASPHALT TO REMAIN.
  - EXISTING CURB TO REMAIN.
  - EXISTING CURB RAMP TO REMAIN.
  - EXISTING CONCRETE/SIDEWALK TO REMAIN.
  - EXISTING LIGHT TO REMAIN.
  - SIGHT VISIBILITY TRIANGLE FOR PROPOSED DEVELOPMENT. SEE KEYNOTE FOR DIMENSIONS.
  - NEW 6" VERTICAL CURB + GUTTER (TYPE 1 (G)) PER PAG DETAIL 209. SEE DETAIL A, SHEET 4. CONNECT TO EXISTING CURB PER PAG DETAIL 211, WHERE APPLICABLE.
  - NEW 4" AC PAVEMENT OVER 8" ABC. COMPACT ABC TO 100%. SEE DETAIL B, SHEET 4.
  - SAWCUT A MINIMUM OF 12" INTO THE EXISTING PAVEMENT. REMOVE EXISTING ASPHALT, TACK AND JOIN.
  - NEW MULTI-USE PATH. 2" AC PAVEMENT OVER 4" ABC. COMPACT ABC TO 100%. SEE DETAIL C, SHEET 4. SEE PLAN FOR WIDTH. THICKENED PAVEMENT EDGE AT BOTH ENDS OF PATH. SEE DETAIL D, SHEET 4.
  - CONNECT TO EXISTING SIDEWALK PER PAG DETAIL 203.
  - NEW CONCRETE CURB ACCESS RAMP WITH 2' WIDE DETECTABLE WARNING STRIP PER PAG DETAIL 207.
  - EXISTING LIGHT POLE TO BE RELOCATED. CONTRACTOR TO COORDINATE WITH TDOT/TEP FOR FINAL LOCATION.



**S KINO PW PLAN VIEW**



**S KINO PW PROFILE VIEW**  
H. SCALE: 1"=30'  
V. SCALE: 1"=3'



**TYPICAL ROAD CROSS SECTION**  
STA. 14+75.00  
N.T.S.



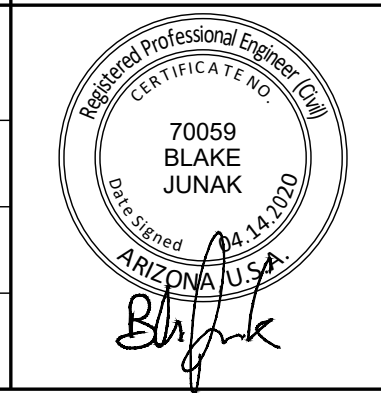
CYPRESS PROJECT NO: 19.076  
2030 east speedway boulevard  
suite #110  
tucson, arizona 85719  
ph: 520.499.2456  
e: info@cypresscivil.com



plan + profile  
DEPARTMENT OF TRANSPORTATION/ENGINEERING DIVISION

**OFFSITE IMPROVEMENT PLAN for THE BRIDGES B-III**

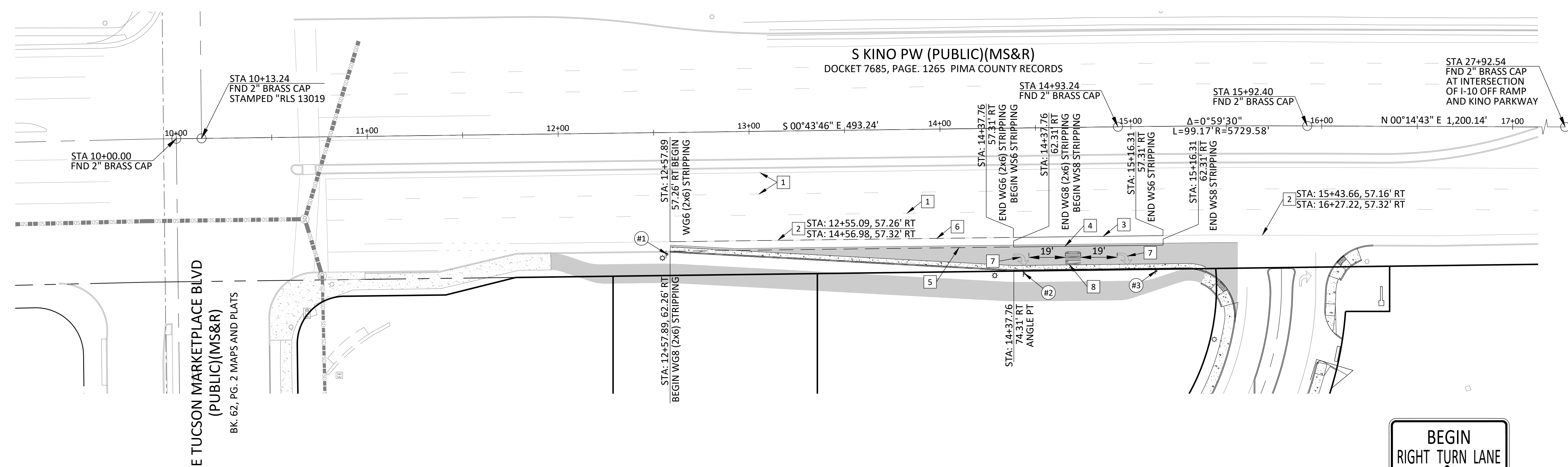
NO.	DATE	REVISION	BY



Approvals	Signatory	Date	
DESIGN SECTION/PERMITS AND CODES			Approved _____ 20__
TRAFFIC ENGINEERING			TRANSPORTATION DIRECTOR
STREETS AND TRAFFIC MAINTENANCE			
ENGINEERING LANDSCAPE ARCH.			REF. _____ SCALE: AS NOTED
ENGINEERING ADMINISTRATOR			PLAN NO. _____
DRAWN BY SER 2020	DSGN BY BJJ 2020	CHKD BY BJJ 2020	



SCALE: 1"=30'  
C.I.=1 FOOT



**CITY OF TUCSON PAVEMENT MARKING NOTES**

- ALL PAVEMENT MARKINGS SHALL CONFORM TO PIMA COUNTY/CITY OF TUCSON (PC/COT) STANDARDS AND SPECIFICATIONS.
- THE PERMANENT PAVEMENT MARKINGS MAY BE MODIFIED AS DIRECT BY THE TRAFFIC ENGINEER.
- THE DESIGN SPEED FOR KINO PARKWAY IS 50 MPH. THE DESIGN VEHICLE IS WB50. THE POSTED SPEED LIMIT IS 40 MPH.
- ALL LANE DIMENSIONS ARE FROM CENTER OF LANE LINE, CENTER OF DOUBLE LANE LINE, FACE OF CURB, OR EDGE OF PAVEMENT UNLESS OTHERWISE NOTED.
- THE PAVEMENT MARKING DRAWINGS ARE SCHEMATIC ONLY. THE CONTRACTOR SHALL FOLLOW ALL DIMENSIONS, DETAILS, AND STANDARDS WHEN INSTALLING PAVEMENT STRIPING, MARKINGS, AND MARKERS.
- THE FINAL LONGITUDINAL STRIPING SHALL BE 60 MIL (0.060") THICK HOT-SPRAYED THERMOPLASTIC REFLECTORIZED STRIPING PLACED OVER THE TEMPORARY STRIPING WITHIN 14 TO 30 CALENDAR DAYS AFTER COMPLETION OF THE FINAL PAVEMENT SURFACE, OR AS DIRECTED BY THE TRAFFIC ENGINEER. ALL OTHER MARKINGS SHALL BE APPLIED AT THE SAME TIME. TEMPORARY STRIPING SHALL BE PAINT.
- ALL FINAL TRANSVERSE MARKINGS SHALL BE HOT SPRAYED 90 MIL THERMOPLASTIC STRIPING (0.090"). ALL PAVEMENT ARROWS AND LEGENDS SHALL BE HOT SPRAYED 90 MIL THERMOPLASTIC PAVEMENT MARKING (0.090"). EXTRUDED THERMOPLASTIC OR PERFORMED APPLICATIONS MAY BE USED IF APPROVED BY THE TRAFFIC ENGINEER.
- THE CONTRACTOR SHALL BE RESPONSIBLE FOR THE LAYOUT AND INSTALLATION OF PAVEMENT MARKINGS ON FINAL SURFACE COURSE FOLLOWING CONTROL POINTS THAT HAVE BEEN SET NO MORE THAN 50 FEET APART ALONG THE LINES TO BE STRIPED. IN TANGENT SECTION OF A ROAD WHERE THE PAVEMENT MARKING PATTERN DOES NOT CHANGE, CONTROL POINTS CAN BE SET AT 200 FEET APART. THE LAYOUT OF ALL PAVEMENT MARKINGS SHALL BE INSPECTED AND APPROVED BY THE TRAFFIC ENGINEER PRIOR TO THE APPLICATION OF MATERIALS.
- IT IS THE CONTRACTOR'S RESPONSIBILITY TO ENSURE THAT THE FINAL SURFACE COURSE IS PLACED SO THAT THE STRIPING IS OFFSET BY NO MORE THAN ONE FOOT CLEAR OF THE CONSTRUCTION JOINT, UNLESS OTHERWISE DIRECTED BY THE ENGINEER.
- THE CONTRACTOR SHALL CLEAN THE ROADWAY SURFACE TO THE SATISFACTION OF THE TRAFFIC ENGINEER BY SWEEPING OR AIR-JET BLOWING IMMEDIATELY PRIOR TO THE PLACEMENT OF ALL PAVEMENT MARKINGS. THE TEMPERATURE SHALL NOT BE LESS THAN 50 DEGREES F. FOR THE PLACEMENT OF HOT SPRAY THERMOPLASTIC STRIPING, AND 40 DEGREES F. FOR THE PLACEMENT OF RPMs.
- ALL RAISED PAVEMENT MARKERS (RPMs) SHALL BE INSTALLED SO THAT THE REFLECTIVE FACE OF EACH MARKER IS FACING THE DIRECTION OF TRAFFIC AND IS PERPENDICULAR TO THE DIRECTION OF TRAFFIC FLOW. TYPE C PAVEMENT MARKERS SHALL BE INSTALLED SO THAT THE CLEAR REFLECTIVE FACE OF EACH MARKER IS FACING APPROACHING TRAFFIC AND IS PERPENDICULAR TO THE DIRECTION OF TRAFFIC FLOW.
- AT INTERSECTION APPROACHES ON ROADWAYS WITH MEDIANS, TYPE C RPMs SHALL BE PLACED AS PER PCDOT/TDOT STANDARDS OR AS DIRECTED BY THE ENGINEER.
- ALL REMOVAL OF EXISTING PAVEMENT MARKINGS SHALL BE ACCOMPLISHED IN ACCORDANCE WITH SECTION 701 OF THE PC/COT STANDARD SPECIFICATIONS. PAINTING OVER EXISTING STRIPING DOES NOT CONSTITUTE APPROVED STRIPING OBLITERATION.

NOTE: ASPHALT SCARRING AS EVALUATED/DETERMINED BY CITY/TRAFFIC ENGINEERING SHALL REQUIRE APPLICATION OF A FOG SEAL CSS-1 AT 0.06 TO 0.08 OF A GALLON PER SQUARE YARD OVER THE REMOVED PAINT STRIPE.

**CITY OF TUCSON SIGNING NOTES**

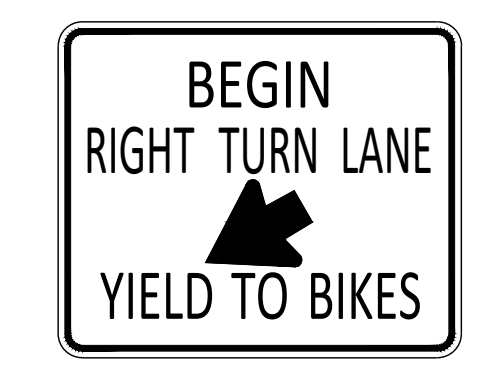
- ALL SIGNS SHALL BE IN COMPLIANCE WITH THE 2009 EDITION OF THE MANUAL ON UNIFORM TRAFFIC CONTROL DEVICES (MUTCD), THE 2002 EDITION OF THE PIMA COUNTY AND CITY OF TUCSON TRAFFIC SIGNING DESIGN MANUAL, THE CURRENT SUPPLEMENTAL SPECIFICATIONS, THESE PLANS, AND THE SPECIAL PROVISIONS.
- SIGNS MAY BE MODIFIED AND LOCATIONS ADJUSTED TO FIT CONDITIONS AS DIRECTED BY THE TRAFFIC ENGINEER.
- POST LENGTHS INDICATED IN THE SIGN SUMMARY ARE APPROXIMATE. THE CONTRACTOR SHALL VERIFY ACTUAL POST LENGTHS.
- ALL PERFORATED POSTS SHALL BE INSTALLED IN A CONCRETE FOUNDATION, UNLESS OTHERWISE DIRECTED BY THE JURISDICTION TRAFFIC ENGINEER. (STANDARD 8-2a)
- ALL SIGN STATION LOCATIONS ARE APPROXIMATE. THE CONTRACTOR SHALL VERIFY ACTUAL SIGN LOCATIONS WITH THE TRAFFIC ENGINEER PRIOR TO THE INSTALLATION OF THE SIGNS. THE CONTRACTOR SHALL BE RESPONSIBLE FOR COORDINATING ALL WORK WITH BLUE STAKE AND FOR INSTALLING ALL TRAFFIC SIGNS IN THE FIELD.
- ON CITY OF TUCSON PROJECTS, ALL WARNING SIGN PANELS SHALL BE FLUORESCENT YELLOW DIAMOND GRADE (DG3/ASTM TYPE XI) SHEETING. ALL SCHOOL ZONE SIGNS SHALL BE FLUORESCENT YELLOW-GREEN DIAMOND GRADE (DG3/ASTM TYPE XI) SHEETING. ALL OTHER SIGN PANELS SHALL HAVE HIGH INTENSITY PRISMATIC TYPE IV SHEETING.
- ALL NEW SIGNS SHALL HAVE STRAIGHT AND TRUE ALUMINUM BACKING, UNLESS OTHERWISE SPECIFIED.
- ALL EXISTING SIGNS TO BE REMOVED AS PART OF THIS PROJECT ARE TO BE DELIVERED TO THE CITY OF TUCSON SIGN SHOP AT 4004 S. PARK (791-3154). THE CONTRACTOR IS RESPONSIBLE FOR UNLOADING THE SALVAGED MATERIAL. ANY SALVAGED SIGN THAT IS TO BE REUSED SHALL BE TEMPORARILY STORED IN A SAFE LOCATION UNTIL REINSTALLATION.
- THE DESIGN SPEED FOR THE ROAD(S) IS 50 MPH. THE POSTED SPEED LIMIT FOR THE ROAD(S) IS 40 MPH. SIGN PLACEMENT SHALL BE BASED ON THE POSTED SPEED LIMIT.

**KEYNOTES**

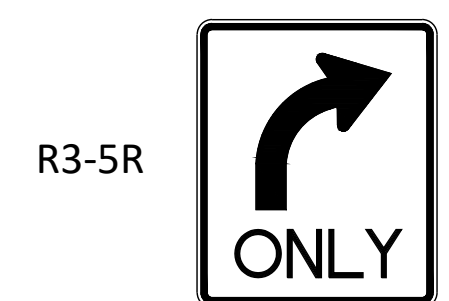
- EXISTING STRIPING TO REMAIN (TYP.).
- EXISTING STRIPING TO BE OBLITERATED. SEE KEYNOTE FOR STATION RANGE.
- NEW WS6 STRIPING.
- NEW WS8 STRIPING.
- NEW WG8 (2x6) STRIPING.
- NEW WG6 (2x6) STRIPING.
- NEW RIGHT TURN ARROW PER PAVEMENT MARKING DESIGN MANUAL SHEET 2-9.
- NEW "ONLY" SYMBOL PER PAVEMENT MARKING DESIGN MANUAL, SHEET 2-10.

**STRIPING QUANTITIES**

STRIPING TYPE	LOCATION	STRIPING LENGTH
WS6	STA4+37.76, 57.31' RT TO STA5+16.31, 57.31' RT	78.37 LF
WS8	STA4+37.76, 62.31' RT TO STA5+16.31, 62.31' RT	78.37LF
WG8 (2x6)	STA2+57.89, 62.26' RT TO STA4+37.77, 62.31' RT	180LF
WG6 (2x6)	STA2+57.89, 57.26' RT TO STA4+37.77, 57.31' RT	180LF



#1 SIGN DETAIL R4-4 N.T.S.



#2 #3 SIGN DETAIL R3-5f R3-5R N.T.S.

**SIGN SUMMARY TABLE**

#	SIGN CODE	LEGEND/DESCRIPTION	ASSOCIATED WORK					SIGN DIMENSIONS	POST TYPE	POST LENGTH	FOUNDATION TYPE	LOCATION
			REMAIN	NEW	REPLACE PANEL	OVERLAY PANEL	RELOCATE					
1	R1-1	STOP		X								STA 6+10.58, 85.82' RT
2	R4-4	BEGIN RIGHT TURN; YIELD TO BIKES		X				36"x30"	SQUARE TUBE, 2"	9.5'	CONCRETE, 12"x18"	STA 2+56.22, 63.78' RT
3	R3-5f	RIGHT LANE		X				30"x12"	SQUARE TUBE, 2"	11'	CONCRETE, 12"x18"	STA 4+42.17, 76.19' RT
	R3-5R	RIGHT TURN ONLY		X				30"x36"	SQUARE TUBE, 2"	11'	CONCRETE, 12"x18"	STA 5+12.48, 75.80' RT
4	R3-5f	RIGHT LANE		X				30"x12"	SQUARE TUBE, 2"	11'	CONCRETE, 12"x18"	STA 5+12.48, 75.80' RT
	R3-5R	RIGHT TURN ONLY		X				30"x36"	SQUARE TUBE, 2"	11'	CONCRETE, 12"x18"	STA 6+10.58, 85.82' RT

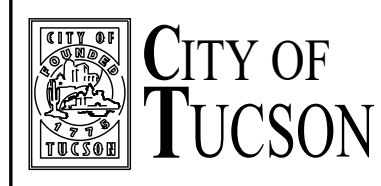
NOTE: SEE PAG STANDARD SPECIFICATIONS/CONSTRUCTION DETAILS, PC/COT PAVEMENT MARKING DESIGN MANUAL, OR PC/COT SIGNING MANUAL FOR ADDITIONAL INFORMATION

**STRIPING QUANTITIES**

STRIPING TYPE	LOCATION	STRIPING LENGTH
WS6	STA4+37.76, 57.31' RT TO STA5+16.31, 57.31' RT	78.37 LF
WS8	STA4+37.76, 62.31' RT TO STA5+16.31, 62.31' RT	78.37LF
WG8 (2x6)	STA2+57.89, 62.26' RT TO STA4+37.77, 62.31' RT	180LF
WG6 (2x6)	STA2+57.89, 57.26' RT TO STA4+37.77, 57.31' RT	180LF



2030 east speedway boulevard  
suite #110  
tucson, arizona 85719  
ph: 520.499.2456  
e: info@cypresscivil.com



**DEPARTMENT OF TRANSPORTATION/ENGINEERING DIVISION**

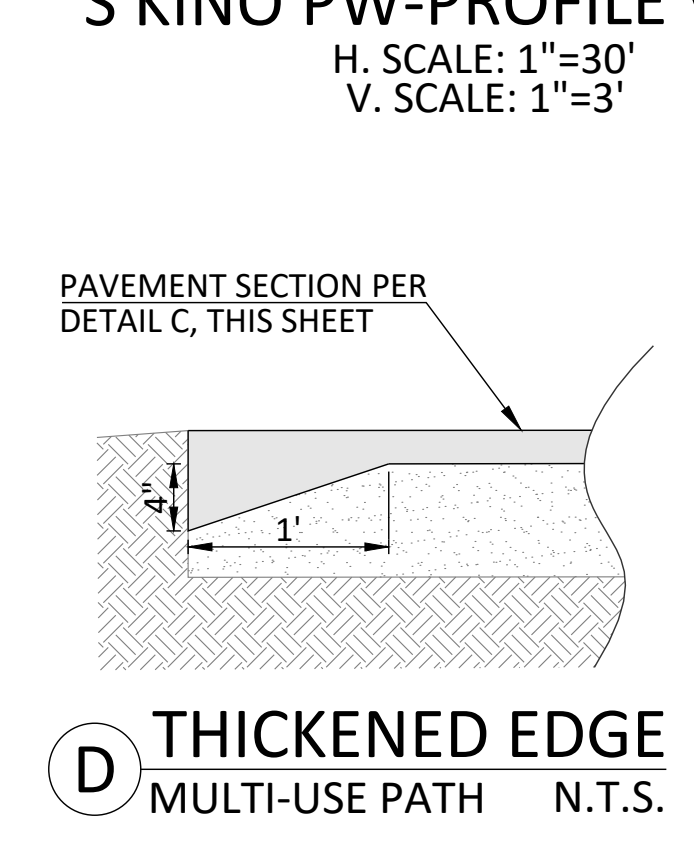
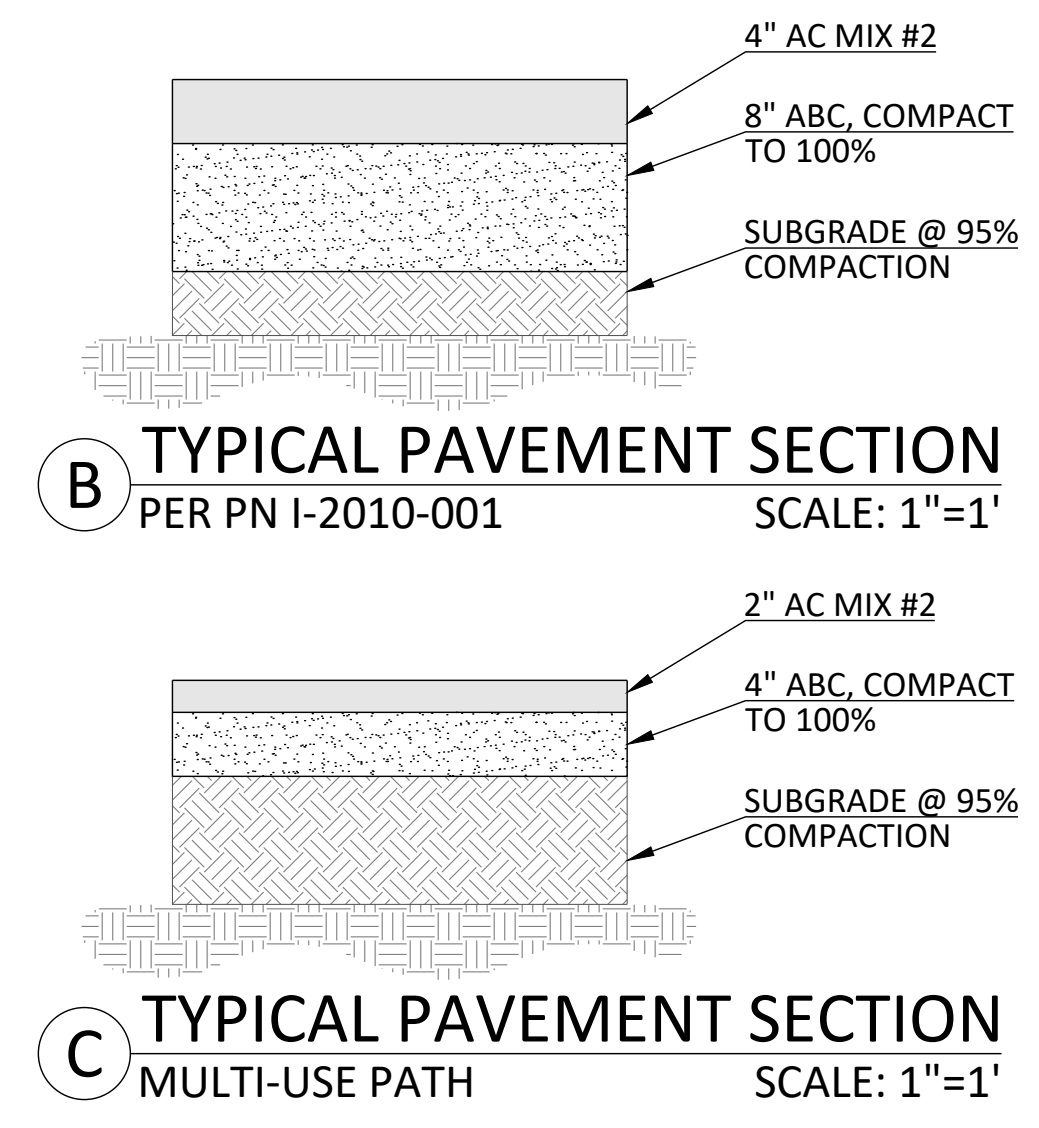
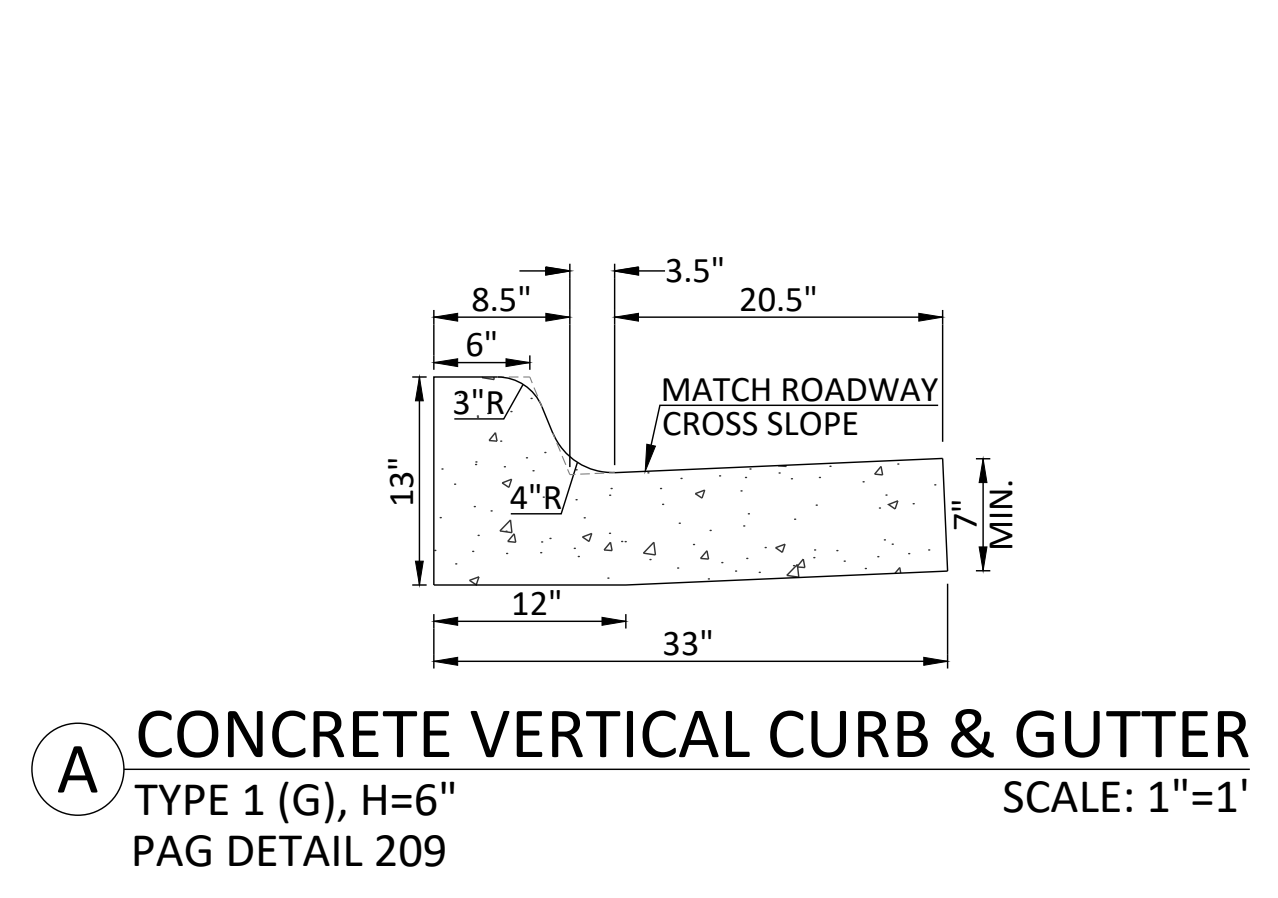
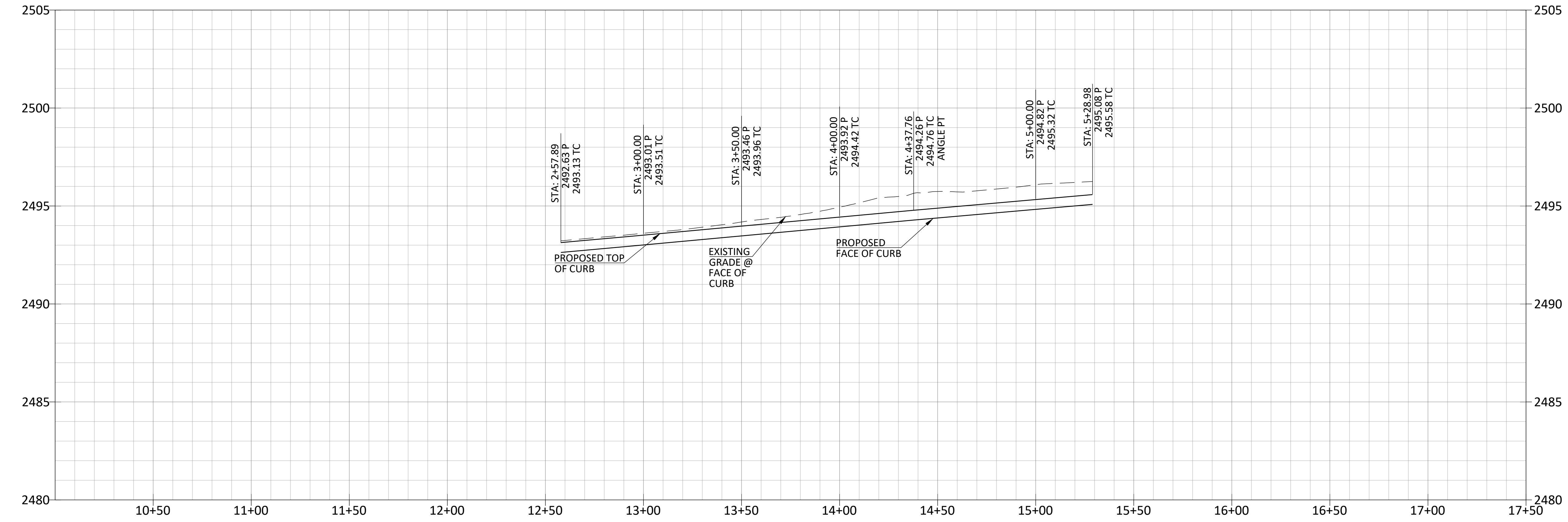
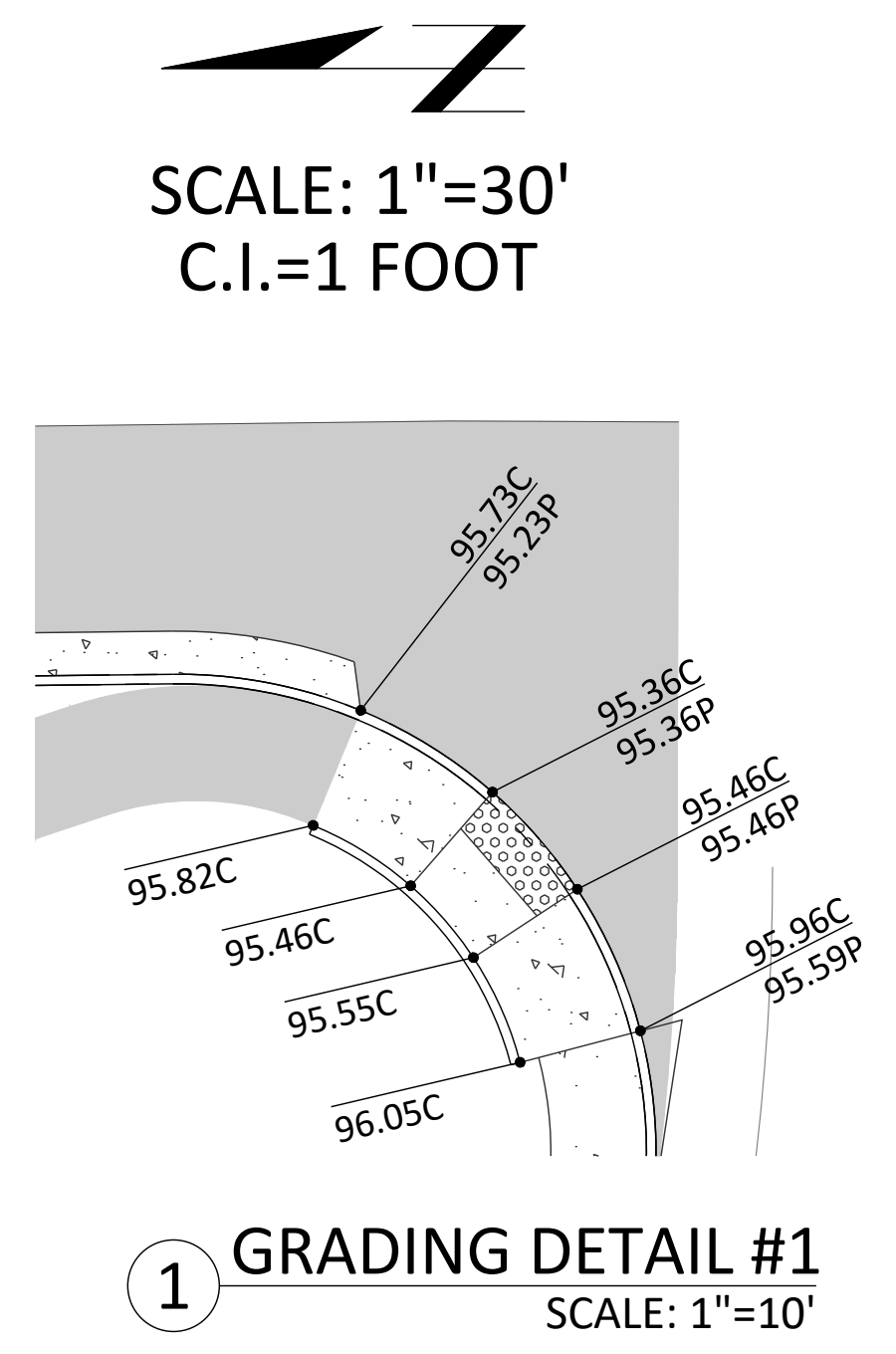
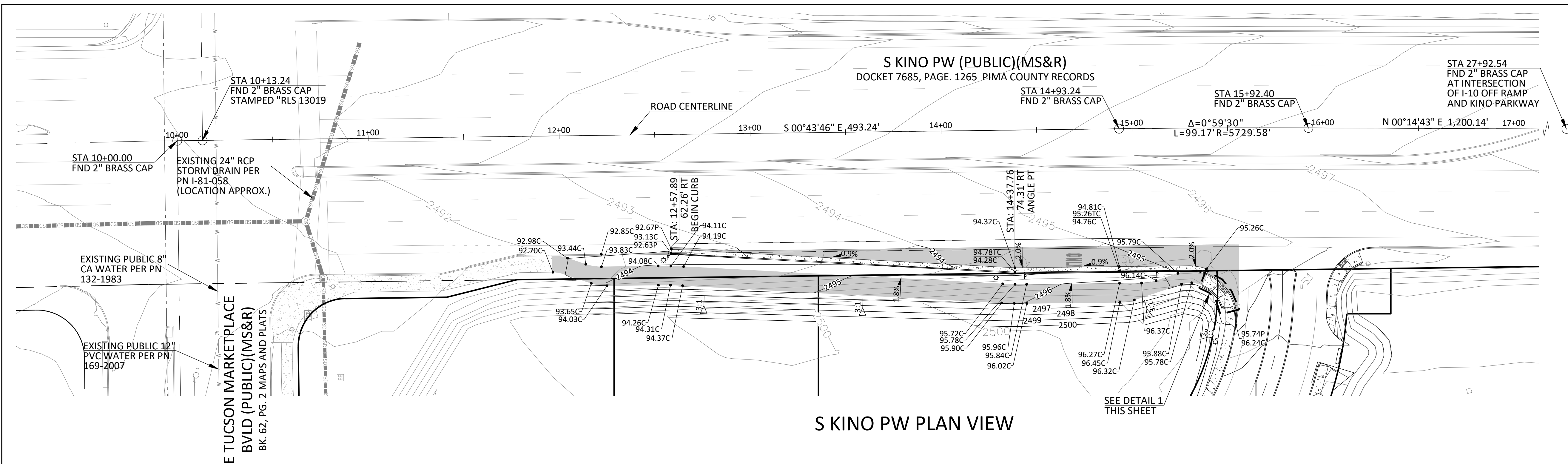
**OFFSITE IMPROVEMENT PLAN for THE BRIDGES B-III**

NO.	DATE	REVISION	BY

Approvals	Signatory	Date
DESIGN SECTION/PERMITS AND CODES		
TRAFFIC ENGINEERING		
STREETS AND TRAFFIC MAINTENANCE		
ENGINEERING LANDSCAPE ARCH.		
ENGINEERING ADMINISTRATOR		

Approved _____, 20__	3 OF 4
TRANSPORTATION DIRECTOR	
REF. _____ SCALE: 1"=1'	
PLAN NO. _____	





Contact Arizona 811 at least two full working days before you begin excavation  
ARIZONA 811  
Call 811 or click Arizona811.com

CYPRESS PROJECT NO: 19.076  
**CYPRESS CIVIL**  
2030 east speedway boulevard suite #110 tucson, arizona 85719 ph: 520.499.2456 e: info@cypresscivil.com

**CITY OF TUCSON**  
Professional Engineer Seal  
70059 BLAKE JUNAK  
AZ 12-1920

grading + drainage  
DEPARTMENT OF TRANSPORTATION/ENGINEERING DIVISION

**OFFSITE IMPROVEMENT PLAN for THE BRIDGES B-III**

NO.	DATE	REVISION	BY

Approvals	Signatory	Date
DESIGN SECTION/PERMITS AND CODES		
TRAFFIC ENGINEERING		
STREETS AND TRAFFIC MAINTENANCE		
ENGINEERING LANDSCAPE ARCH.		
ENGINEERING ADMINISTRATOR		

Approved _____ 20__	4 OF 4
TRANSPORTATION DIRECTOR	
REF. _____ SCALE: AS NOTED	
PLAN NO. _____	

DRWN. BY SER 2020 DSGN. BY BJJ 2020 CHKD. BY BJJ 2020