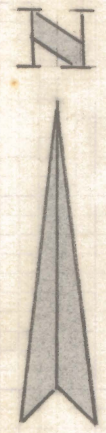
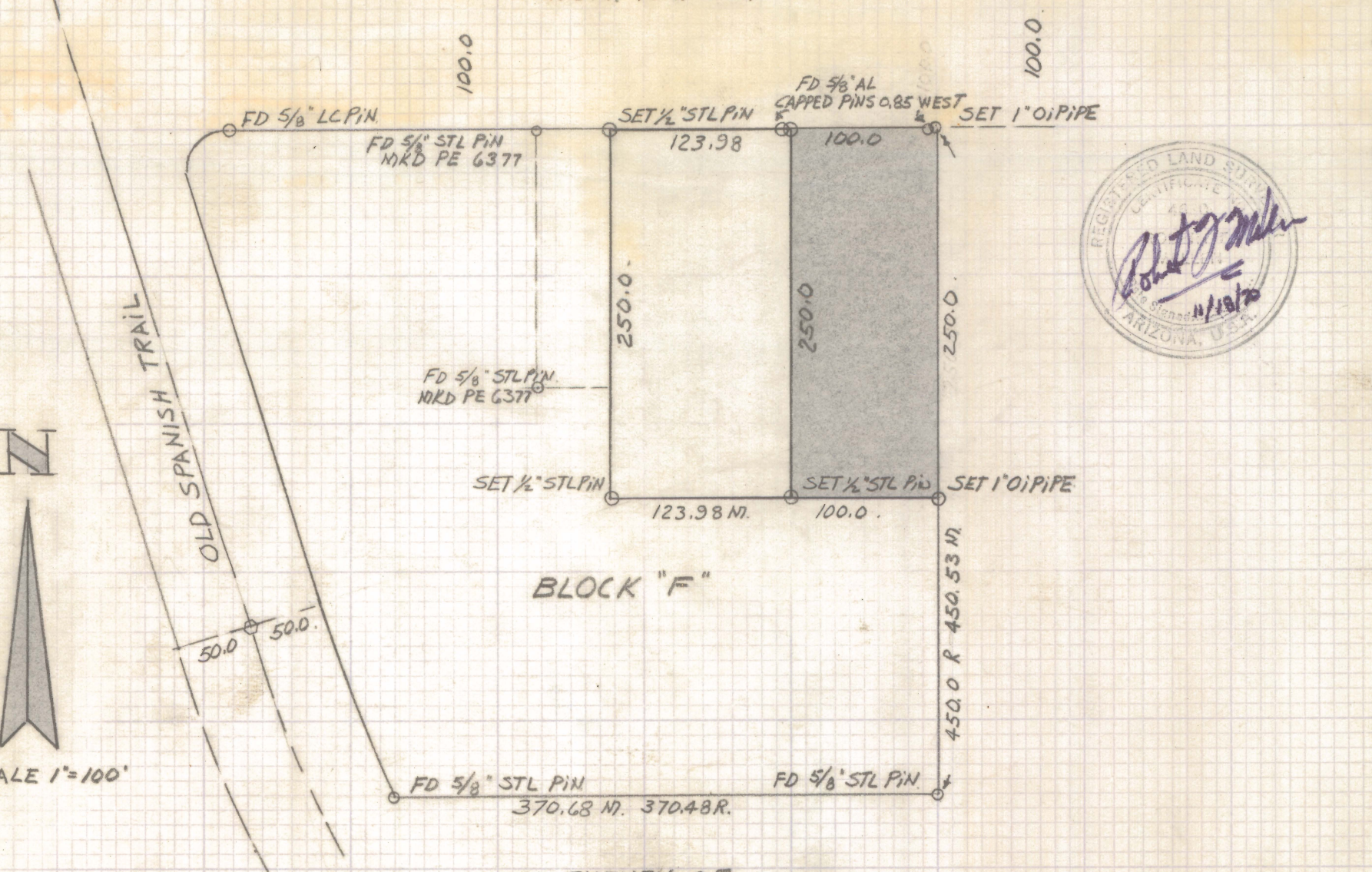


DISCLAIMER:

This unrecorded Record of Survey was donated to the City of Tucson. The City of Tucson provides this data for your personal use "as is." Additionally, the City of Tucson provides this information with the understanding that it is not guaranteed to be accurate, correct or complete and conclusions drawn from such information are the responsibility of the user.

EAST BROADWAY
1771.45 N. 1771.57 R.



SCALE 1"=100'

SURVEY OF
A PORTION OF BLOCK "F" OF DESERT
STEPPES ESTATES AS RECORDED IN
BOOK 15 OF MAPS & PLATS IN THE OFFICE
OF THE PINA COUNTY RECORDER PINA
COUNTY ARIZONA.

16/14/15

Z-2020-022