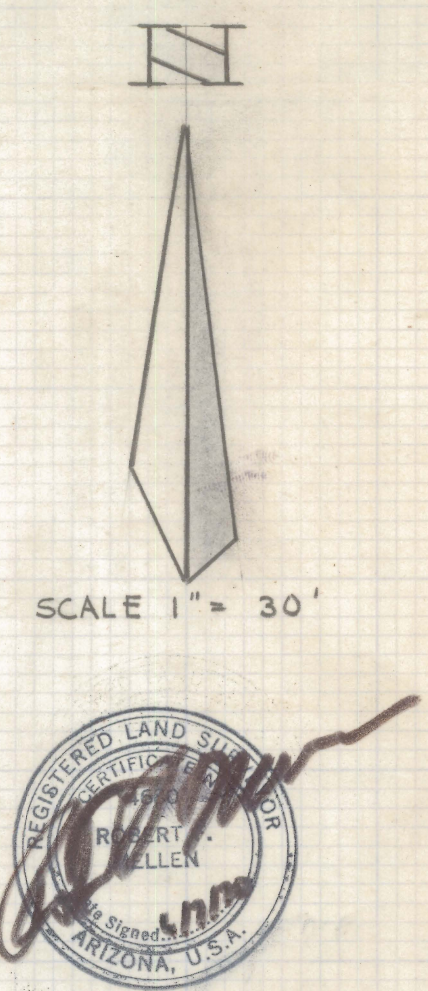
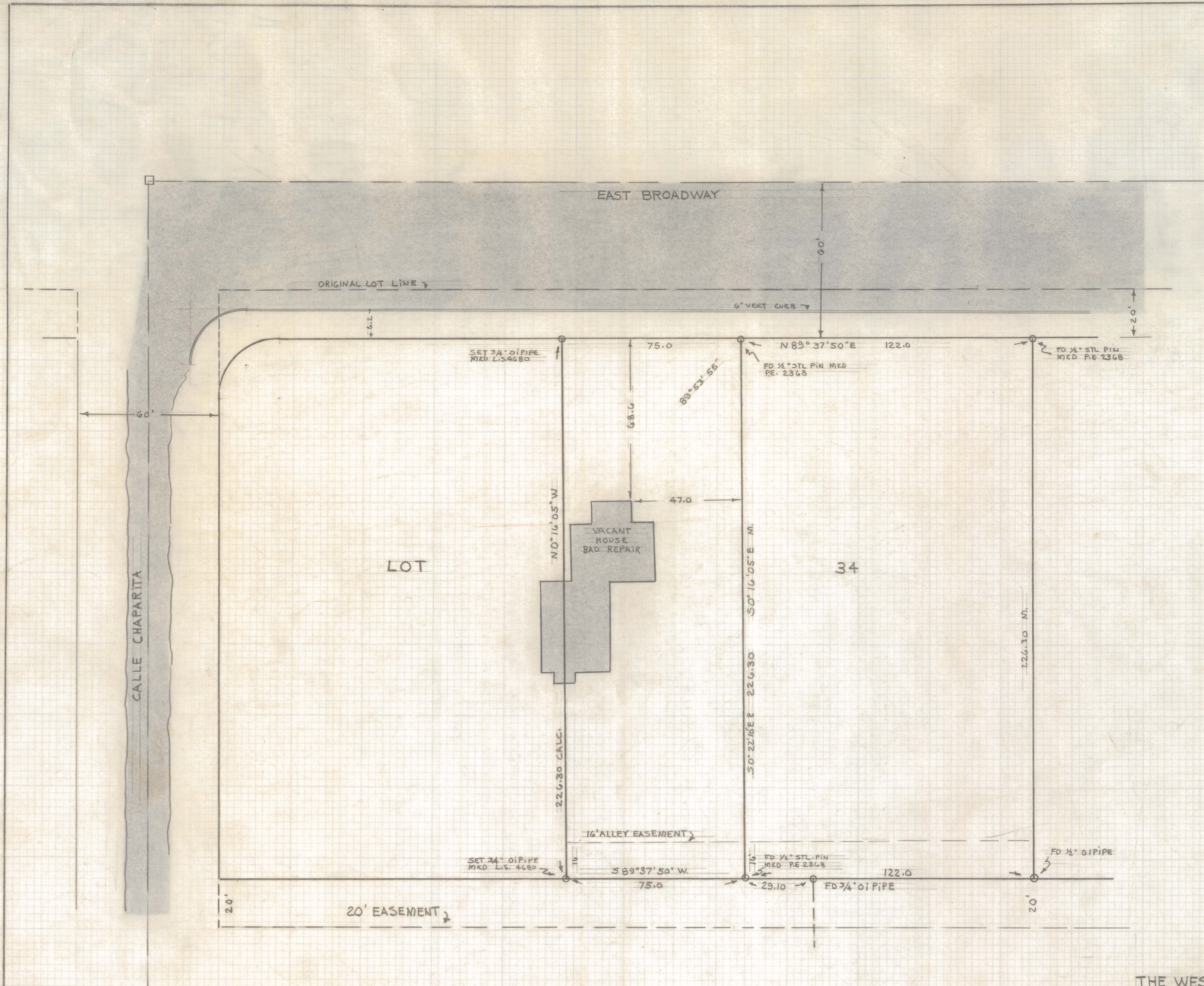


DISCLAIMER:

This unrecorded Record of Survey was donated to the City of Tucson. The City of Tucson provides this data for your personal use "as is." Additionally, the City of Tucson provides this information with the understanding that it is not guaranteed to be accurate, correct or complete and conclusions drawn from such information are the responsibility of the user.



MAP OF SURVEY
 OF
 THE WEST 75 FEET OF THE EAST 197 FEET
 OF LOT 34 OF COLONIA SOLANA SUB-
 DIVISION RECORDED IN BOOK 5 AT PAGE
 32 OF MAPS & PLATS PIMA COUNTY
 ARIZONA

MARCO
 SOILS AND FOUNDATION ENGINEERS, INC.
 189 N. SIXTH AVENUE
 TUCSON, ARIZONA 85701

Professional Engineer Seal for Charlie E. Allen, Arizona, U.S.A.

16-14-14-70-22

Z-2020-024
 M.S.F. 700707