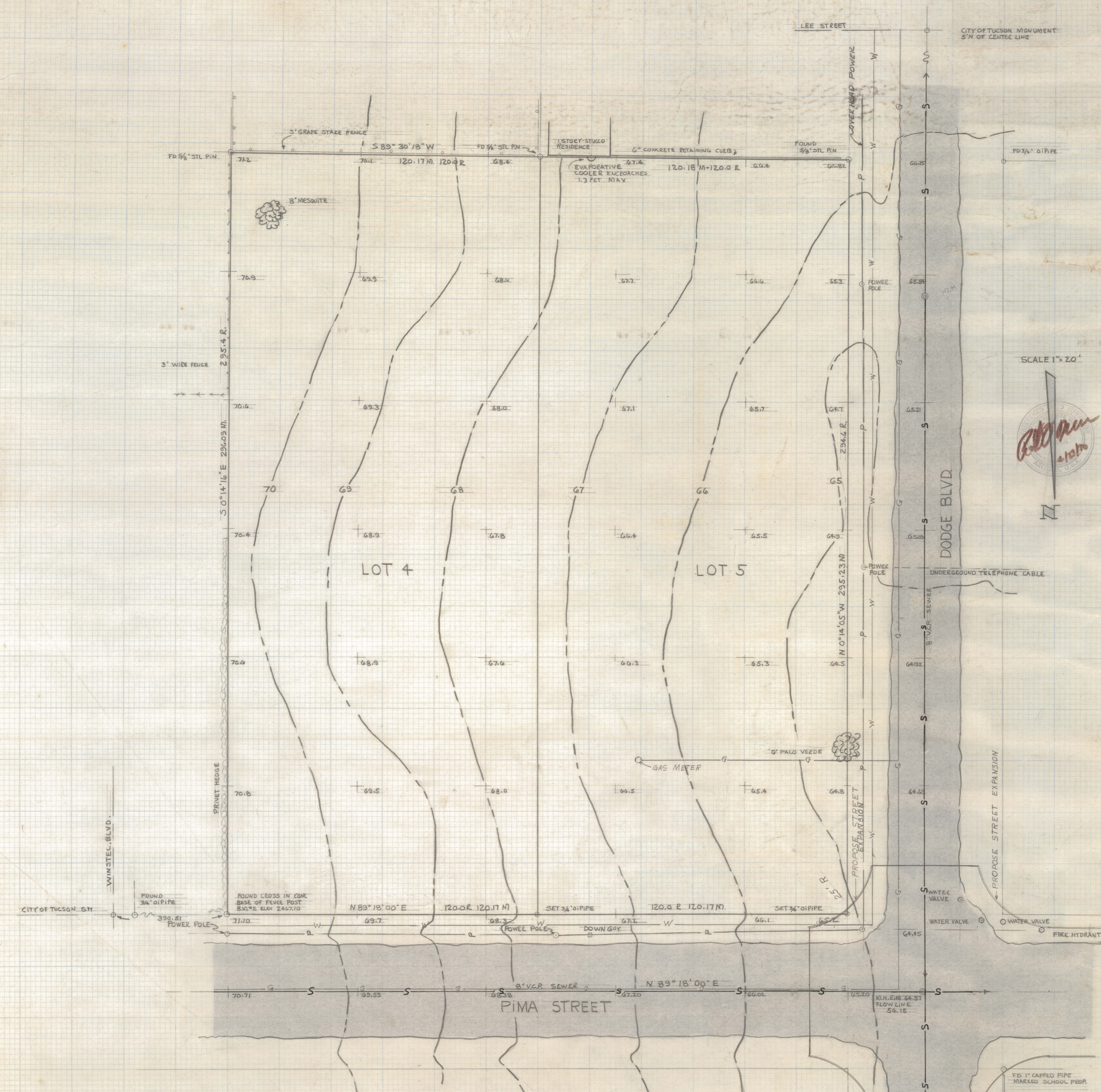


DISCLAIMER:

This unrecorded Record of Survey was donated to the City of Tucson. The City of Tucson provides this data for your personal use "as is." Additionally, the City of Tucson provides this information with the understanding that it is not guaranteed to be accurate, correct or complete and conclusions drawn from such information are the responsibility of the user.



ADDRESS
 3702 E. PIMA ST.
 TUCSON, ARIZONA
 85718

SURVEY OF
 LOTS 4 AND 5 OF BLOCK 2
 OF SPEEDWAY PARK ADDITION
 AS RECORDED IN BOOK 4 AT
 PAGE 95 OF MAPS AND PLATS
 IN THE OFFICE OF THE PIMA
 COUNTY RECORDER.

PIMA COUNTY ARIZONA

BY
 MARCO
 SOIL & FOUNDATION ENGRS.
 139 N. 6TH AVE.
 TUCSON, ARIZ.



JOB NO 700406

4-14-70-14
 Z-2020-025