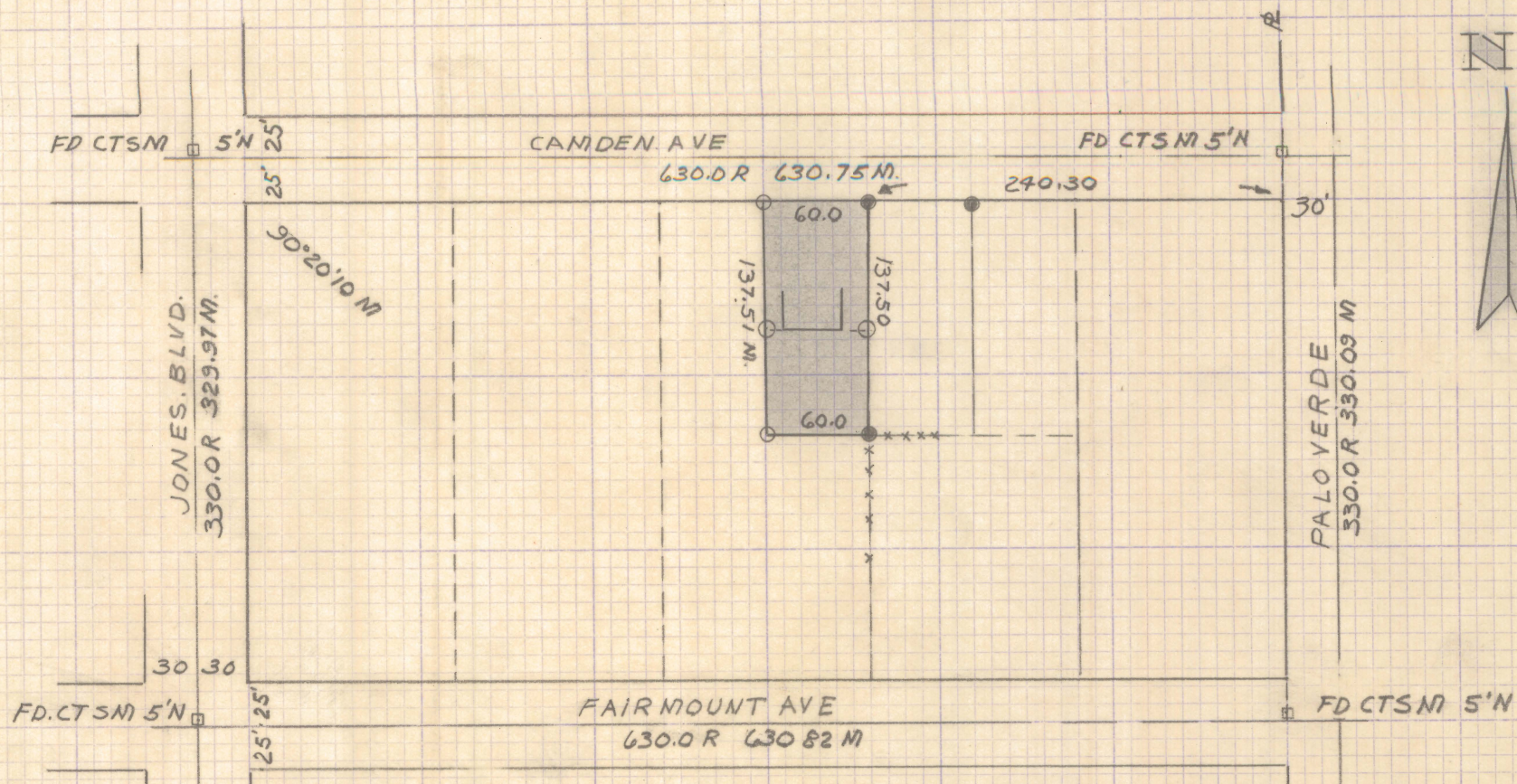


# **DISCLAIMER:**

**This unrecorded Record of Survey was donated to the City of Tucson. The City of Tucson provides this data for your personal use "as is." Additionally, the City of Tucson provides this information with the understanding that it is not guaranteed to be accurate, correct or complete and conclusions drawn from such information are the responsibility of the user.**



○ INDICATES 1/2" STEEL PIN SET  
 ● INDICATES 5/8" STEEL PIN FOUND



SURVEY OF  
 THE EAST 60.0 FEET OF THE  
 NORTH HALF OF LOT 3 OF BLOCK 9  
 OF MORNING VIEW TRACTS OF THE  
 JONES ADDITION AS RECORDED IN  
 BOOK 4 OF MAPS & PLATS A PAGE  
 44 IN THE OFFICE OF THE PIMA CO.  
 RECORDER, PIMA CO. ARIZONA.

ROBERT F. MELLEN  
 REGISTERED LAND SURVEYOR  
 1250 W. MOHAVE  
 MA 2-5565 TUCSON, ARIZ.

Z-2020-028