

DISCLAIMER:

This unrecorded Record of Survey was donated to the City of Tucson. The City of Tucson provides this data for your personal use "as is." Additionally, the City of Tucson provides this information with the understanding that it is not guaranteed to be accurate, correct or complete and conclusions drawn from such information are the responsibility of the user.

FD. 1/2" STL PIN

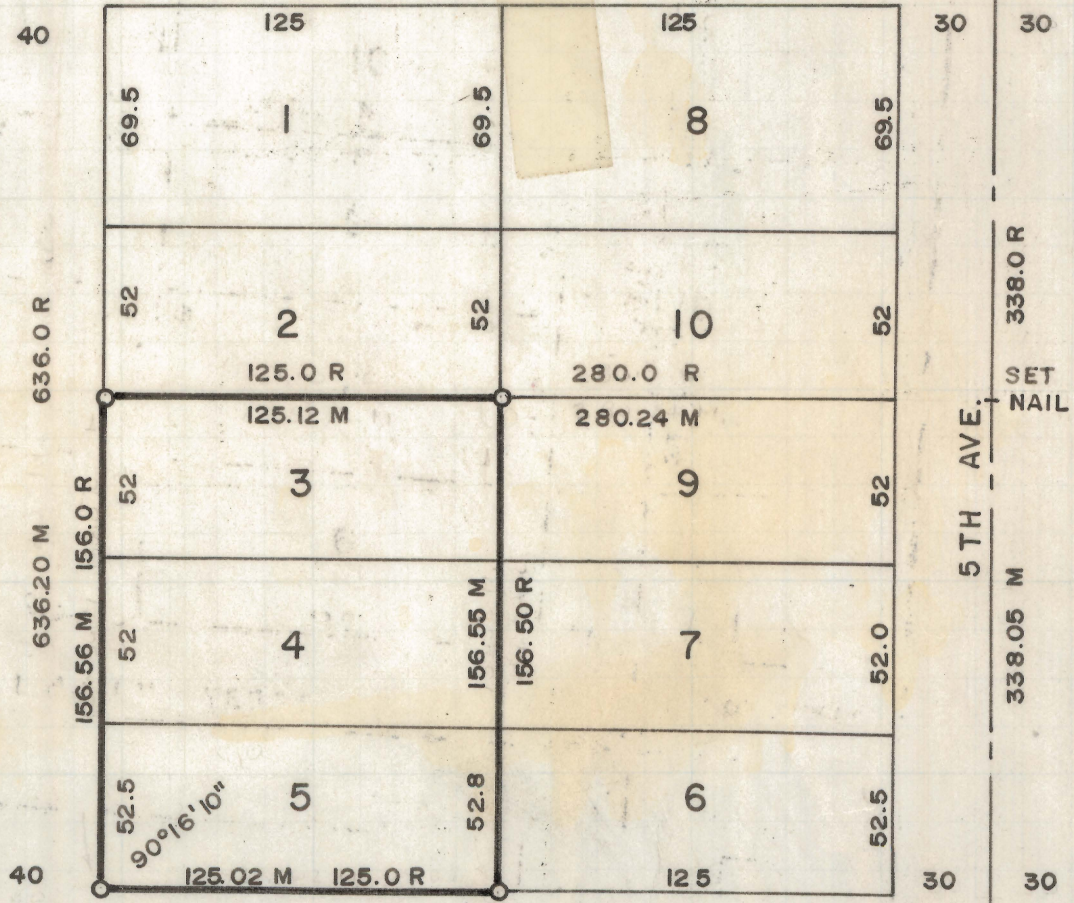
PRESIDENT STREET

5' SM



SCALE 1"=60'

SOUTH 6TH AVE.



LINCOLN STREET

FD 1/2" STL PIN
NW COR LOT 3
BLK 16

RESULTS OF SURVEY OF

LOTS 3, 4, 5 OF BLOCK 6, SUPPLEMENTAL MAP OF AMENDED GOVERNMENT HEIGHTS SUBDIVISION NO.2 AS RECORDED IN BOOK 5 OF MAPS & PLATS AT PAGE 65 IN THE OFFICE OF THE PIMA COUNTY RECORDER, PIMA COUNTY, ARIZONA



ROBERT F. MELLEN
REGISTERED LAND SURVEYOR
TUCSON, ARIZONA
JUNE 1971

Z-2020-035

SEPIA