

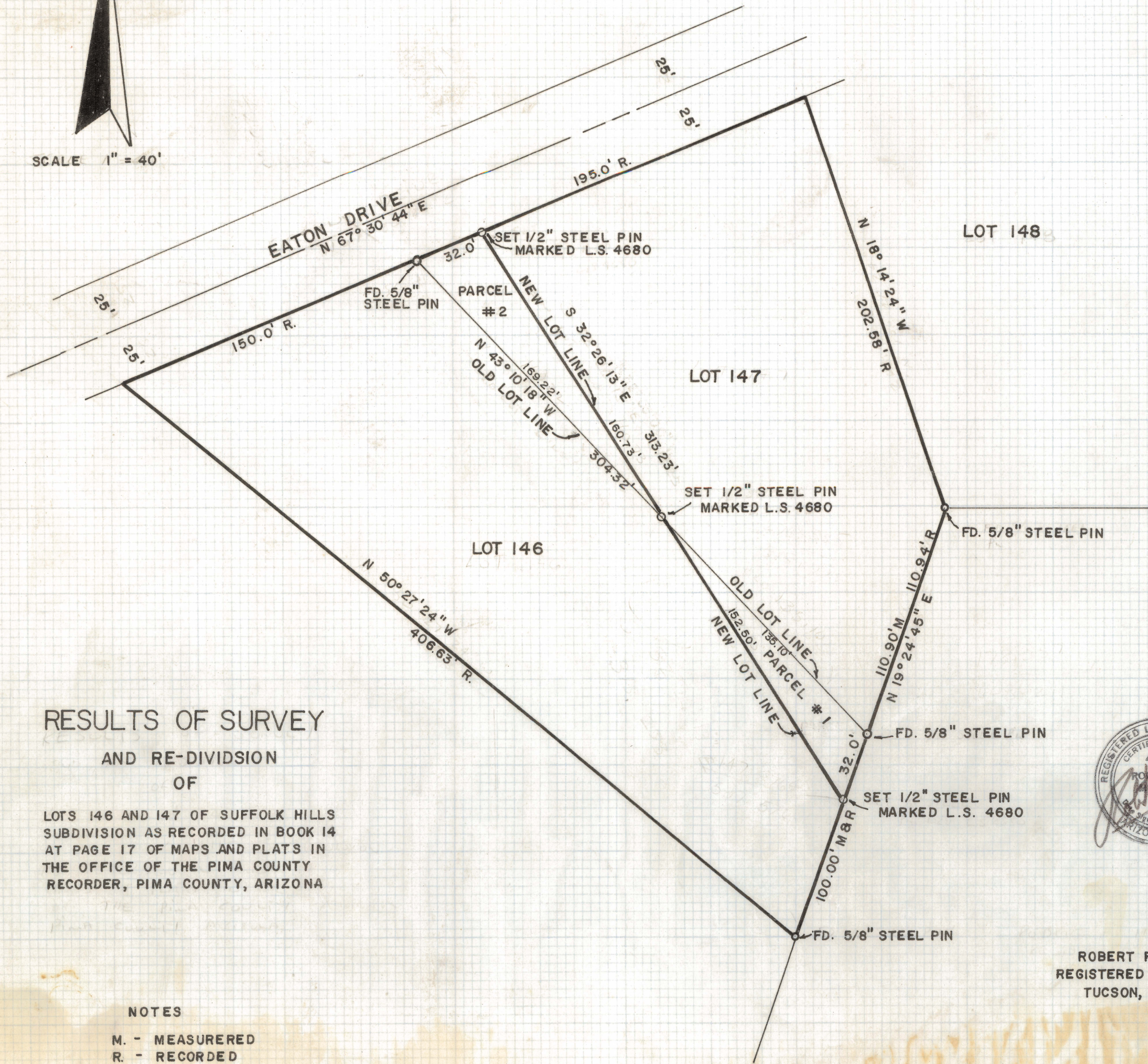
# **DISCLAIMER:**

**This unrecorded Record of Survey was donated to the City of Tucson. The City of Tucson provides this data for your personal use "as is." Additionally, the City of Tucson provides this information with the understanding that it is not guaranteed to be accurate, correct or complete and conclusions drawn from such information are the responsibility of the user.**



N

SCALE 1" = 40'

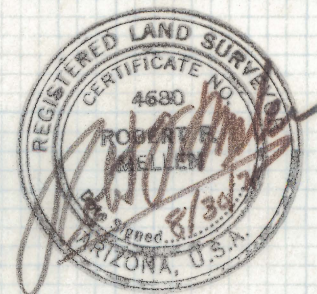


RESULTS OF SURVEY  
AND RE-DIVISION  
OF

LOTS 146 AND 147 OF SUFFOLK HILLS  
SUBDIVISION AS RECORDED IN BOOK 14  
AT PAGE 17 OF MAPS AND PLATS IN  
THE OFFICE OF THE PIMA COUNTY  
RECORDER, PIMA COUNTY, ARIZONA

NOTES

M. - MEASURED  
R. - RECORDED



ROBERT F. MELLEN  
REGISTERED LAND SURVEYOR  
TUCSON, ARIZONA

Z-2020-036

71-105

IM