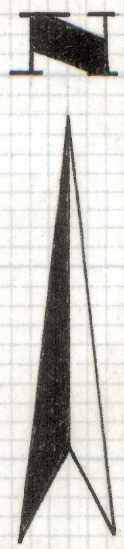
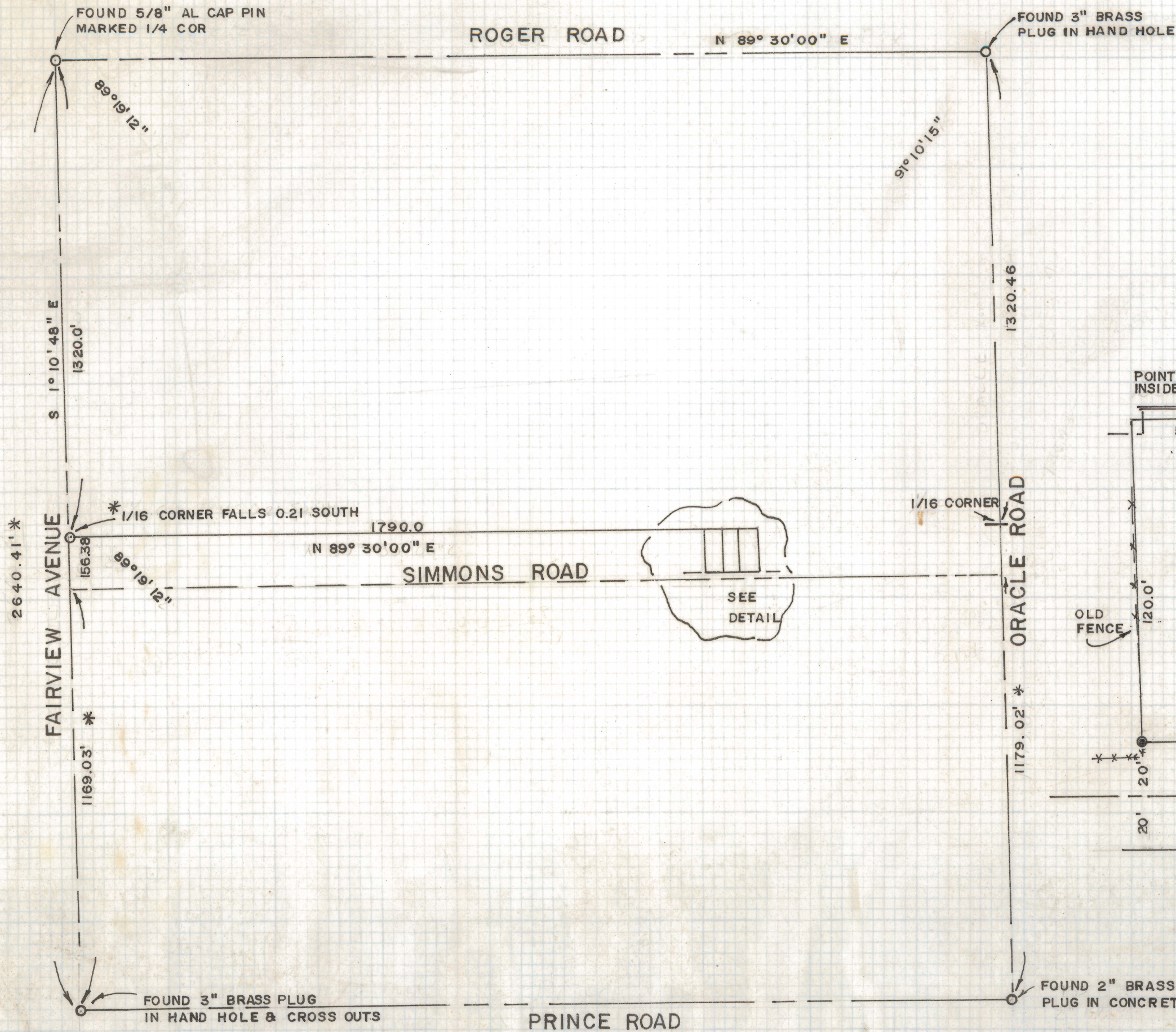
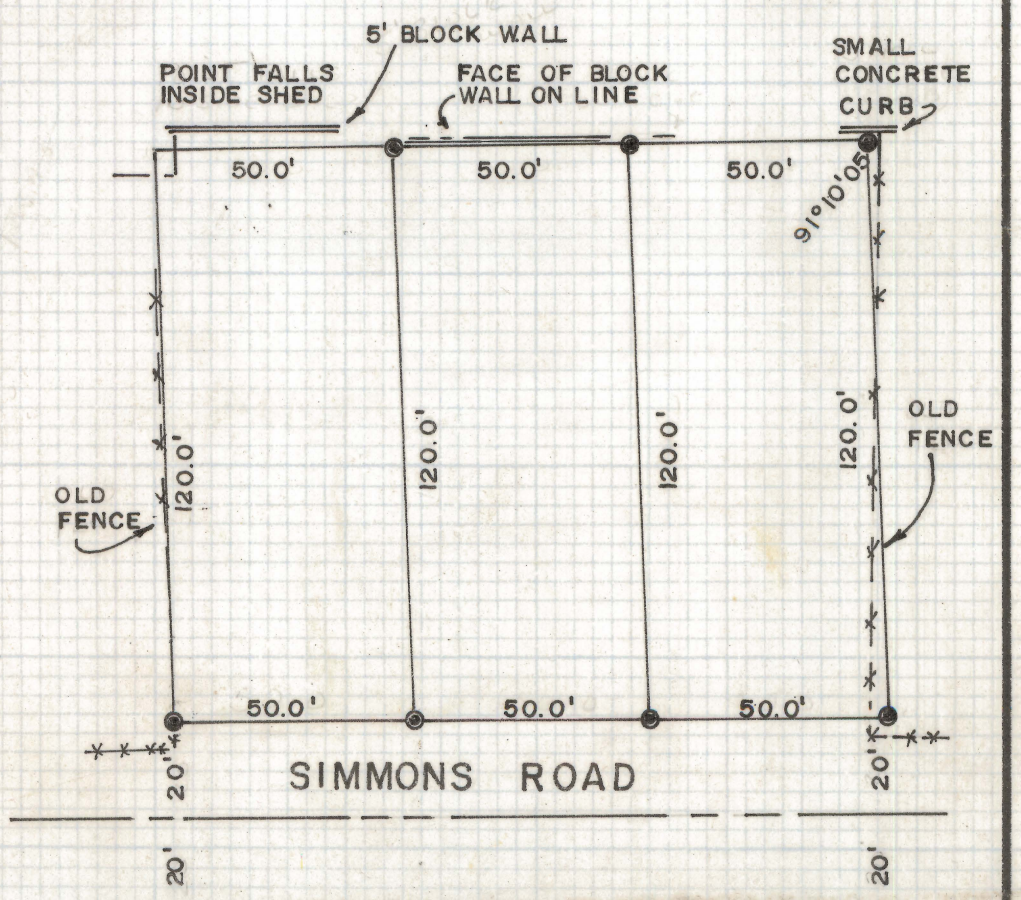


DISCLAIMER:

This unrecorded Record of Survey was donated to the City of Tucson. The City of Tucson provides this data for your personal use "as is." Additionally, the City of Tucson provides this information with the understanding that it is not guaranteed to be accurate, correct or complete and conclusions drawn from such information are the responsibility of the user.



SCALE 1" = 300'
DETAIL 1" = 40'



NOTES

- INDICATES 1/2" STEEL PIN SET MARKED L.S. 4680
- * INDICATES MEASUREMENTS BY CITY OF TUCSON AS SHOWN IN FIELD BOOKS # 1089 & 1094

RESULTS OF SURVEY
of

A PORTION OF THE NORTHEAST QUARTER
OF SECTION 26, TOWNSHIP 13-S, RANGE
13-E, GILA AND SALT RIVER BASE AND
MERIDIAN, PIMA COUNTY, ARIZONA

ROBERT F. MELLETT
REGISTERED LAND SURVEYOR
TUCSON, ARIZONA



Z-2020-039