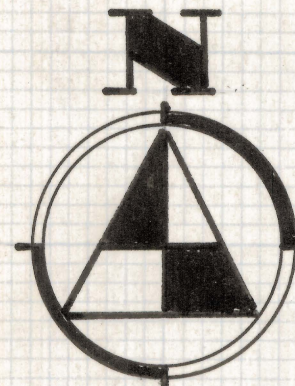
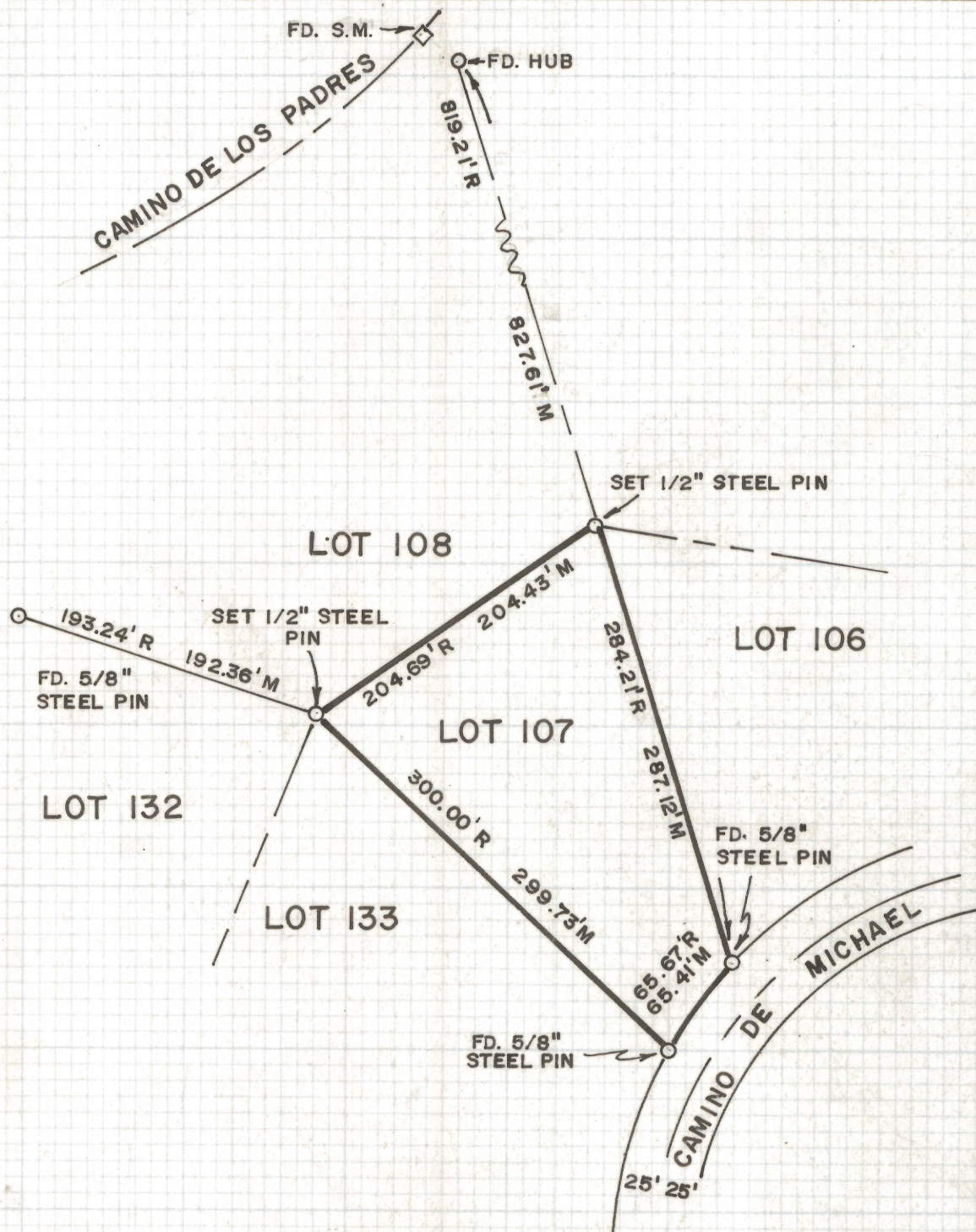


# **DISCLAIMER:**

**This unrecorded Record of Survey was donated to the City of Tucson. The City of Tucson provides this data for your personal use "as is." Additionally, the City of Tucson provides this information with the understanding that it is not guaranteed to be accurate, correct or complete and conclusions drawn from such information are the responsibility of the user.**



SCALE 1" = 100'

## RESULTS OF SURVEY OF

LOT 107 OF SANTA CATALINA ESTATES  
# 2 AS RECORDED IN BOOK 16 OF MAPS  
AND PLATS AT PAGE 17 IN THE OFFICE  
OF THE PIMA COUNTY RECORDER, PIMA  
COUNTY, ARIZONA



ROBERT F. MELLEN  
REGISTERED LAND SURVEYOR  
TUCSON, ARIZONA

Z-2020-041

71-148

IM