

DISCLAIMER:

This unrecorded Record of Survey was donated to the City of Tucson. The City of Tucson provides this data for your personal use "as is." Additionally, the City of Tucson provides this information with the understanding that it is not guaranteed to be accurate, correct or complete and conclusions drawn from such information are the responsibility of the user.

PRINTED ON RECYCLED PAPER

N



SCALE 1" = 100'

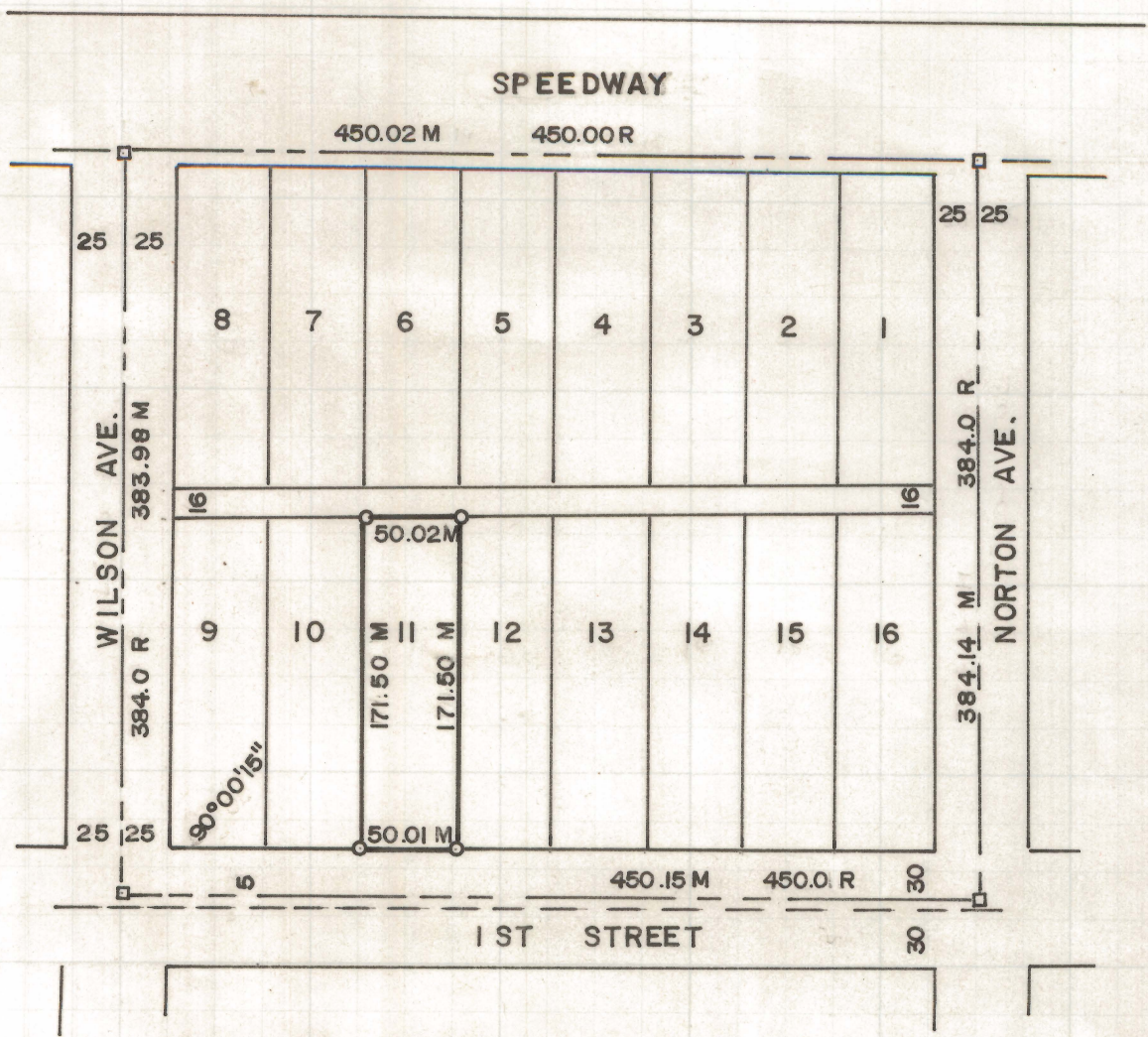


RESULTS OF SURVEY OF

LOT 11, BLOCK 20 OF SPEEDWAY
HEIGHTS SUBDIVISION AS RECORDED
IN BOOK 3 AT PAGE 104 OF MAPS &
PLATS IN THE OFFICE OF THE
PIMA COUNTY RECORDER, PIMA
COUNTY, ARIZONA

ROBERT F. MELLEN
REGISTERED LAND SURVEYOR
TUCSON, ARIZONA

Z-2020-044



NOTES

- OLD 1 1/2" OPEN IRON PIPE FOUND AT SW CORNER RESET 5/8" AL CAPPED PIN
- INDICATES 1/4" PIN IN HAND HOLE
- INDICATES 5/8" AL CAPPED PIN MARKED L.S. 4680