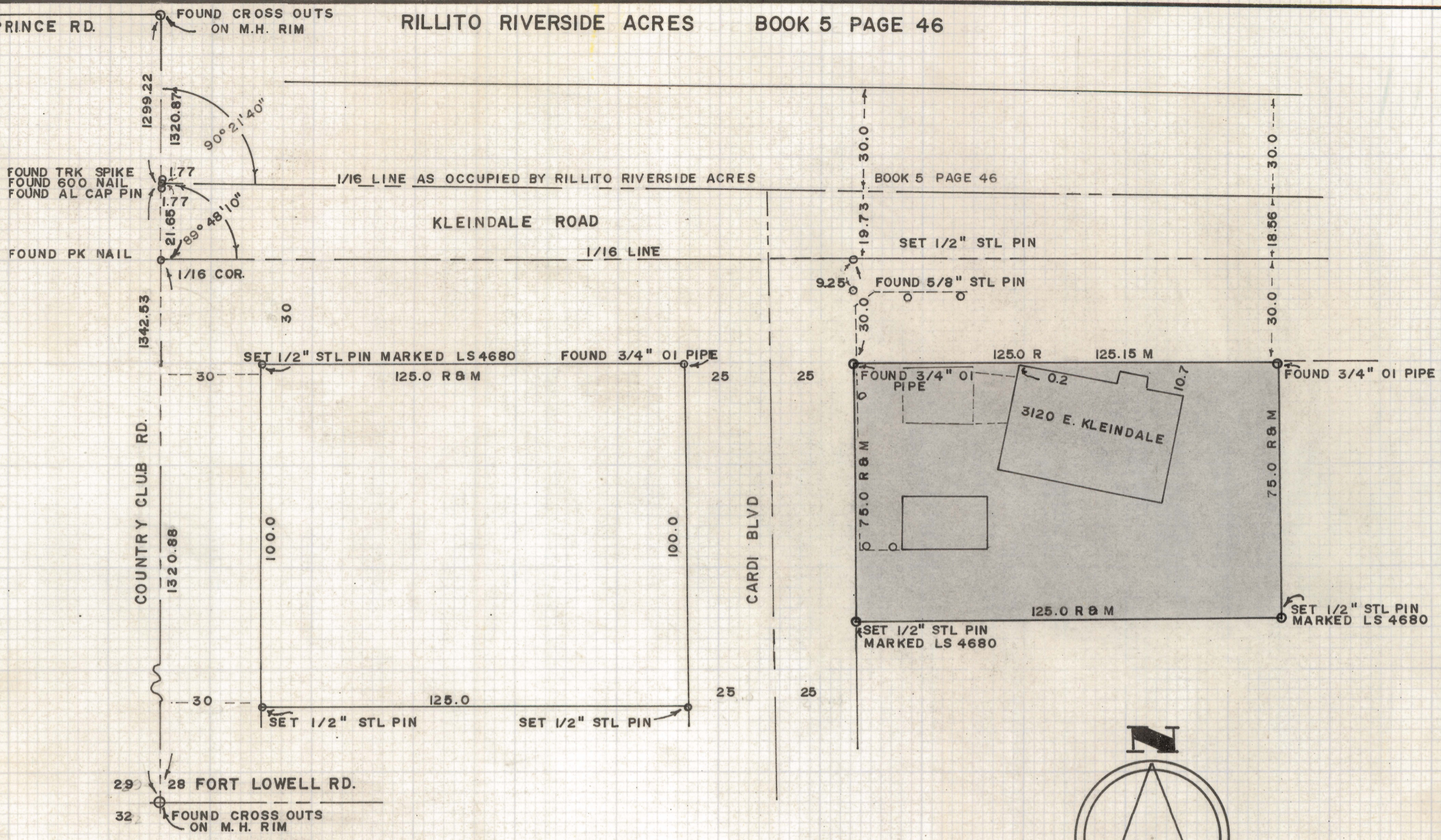
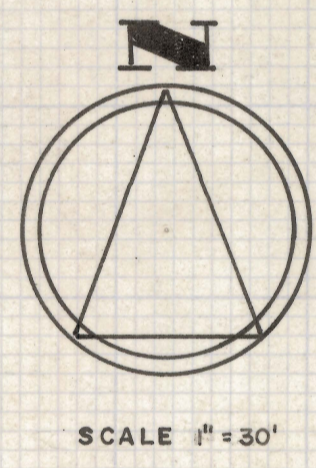


DISCLAIMER:

This unrecorded Record of Survey was donated to the City of Tucson. The City of Tucson provides this data for your personal use "as is." Additionally, the City of Tucson provides this information with the understanding that it is not guaranteed to be accurate, correct or complete and conclusions drawn from such information are the responsibility of the user.



NOTE:
 1/16 LINE SET BY EXISTING MONUMENTS AND PROPERTY CORNERS ALONG KLEINDALE FROM PK NAIL WHICH IS A SPLIT BETWEEN THE SECTION CORNER AND 1/4 CORNER ON COUNTRY CLUB ROAD



CERTIFICATION

I, ROBERT F. MELLEN, REGISTERED LAND SURVEYOR, NO. 4680, STATE OF ARIZONA, DO HEREBY CERTIFY THAT THIS MAP REPRESENTS A SURVEY COMPLETED UNDER MY DIRECTION AND SAID MAP TRULY REPRESENTS THE MONUMENTS AND CONDITIONS FOUND BY SAID SURVEY.

Robert F. Mellen 2/5/71
 ROBERT F. MELLEN
 REGISTERED LAND SURVEYOR NO. 4680

SURVEY OF
 A PORTION OF THE SOUTHWEST QUARTER OF SECTION 28, TOWNSHIP 13 S., RANGE 14 E., G.&S.R. B.&M. PIMA COUNTY, ARIZONA