

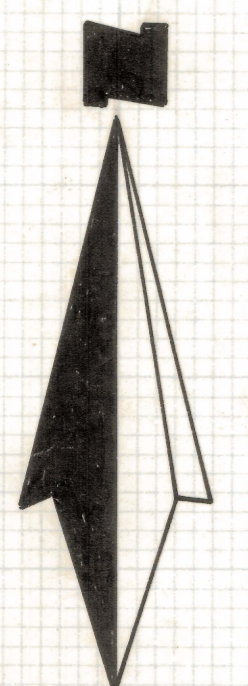
DISCLAIMER:

This unrecorded Record of Survey was donated to the City of Tucson. The City of Tucson provides this data for your personal use "as is." Additionally, the City of Tucson provides this information with the understanding that it is not guaranteed to be accurate, correct or complete and conclusions drawn from such information are the responsibility of the user.

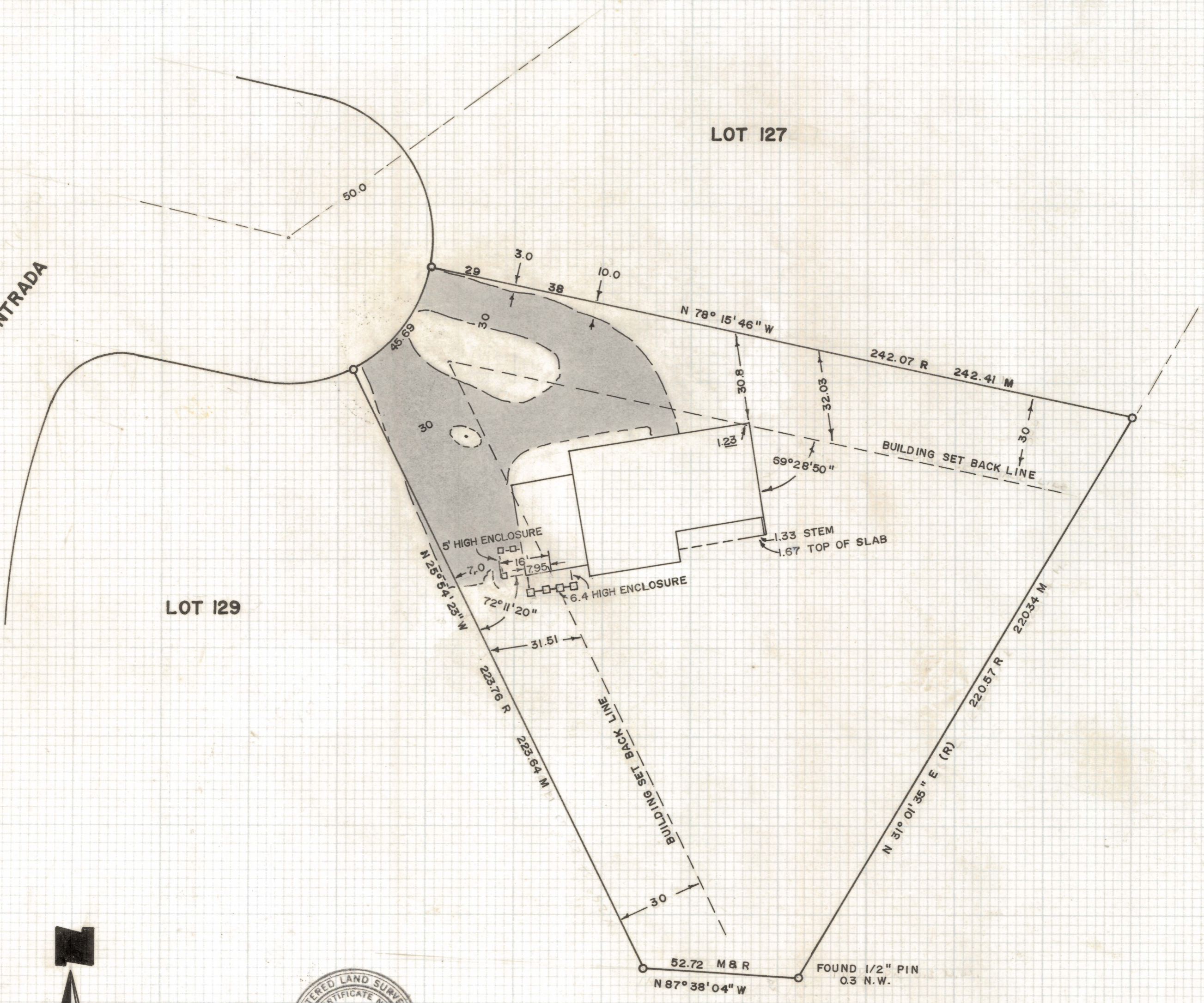
VIA ENTRADA

LOT 127

LOT 129



SCALE 1" = 30'



RESULTS OF A SURVEY

OF LOT 128 OF CATALINA FOOTHILLS ESTATES NO. 7 AS RECORDED IN BOOK 20 OF MAPS AND PLATS IN THE OFFICE OF THE PIMA COUNTY RECORDER, PIMA COUNTY, ARIZONA

NOTES

- (1) MEASUREMENT OF STEM WALLS
- (A) N.E. CORNER 1.0
- (B) S.E. CORNER 1.9
- (C) S.E. CORNER PORCH 1.0
- (D) S.E. CORNER SLAB 1.33
- (E) N.W. CORNER 0.8

⊙ INDICATES 5/8" AL CAPPED PIN MARKED WITH LOT NO.

ROBERT F. MELLEN
REGISTERED LAND SURVEYOR
TUCSON, ARIZONA

Z-2020-051