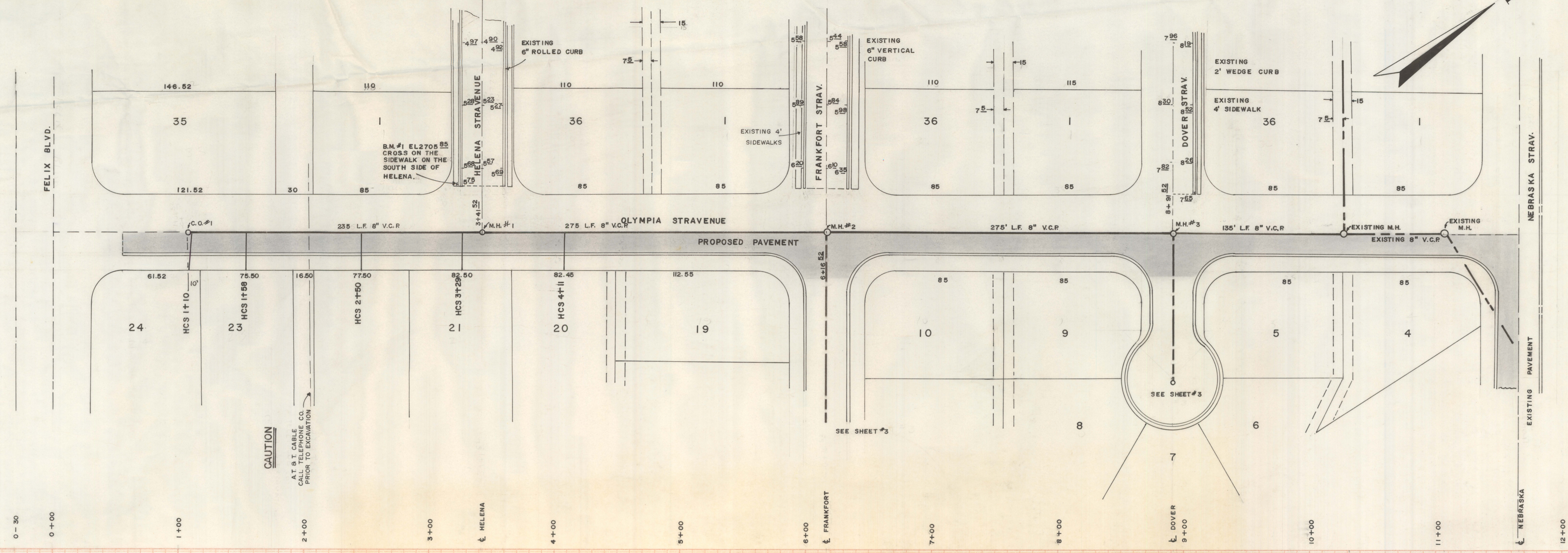


DISCLAIMER:

This unrecorded Record of Survey was donated to the City of Tucson. The City of Tucson provides this data for your personal use "as is." Additionally, the City of Tucson provides this information with the understanding that it is not guaranteed to be accurate, correct or complete and conclusions drawn from such information are the responsibility of the user.

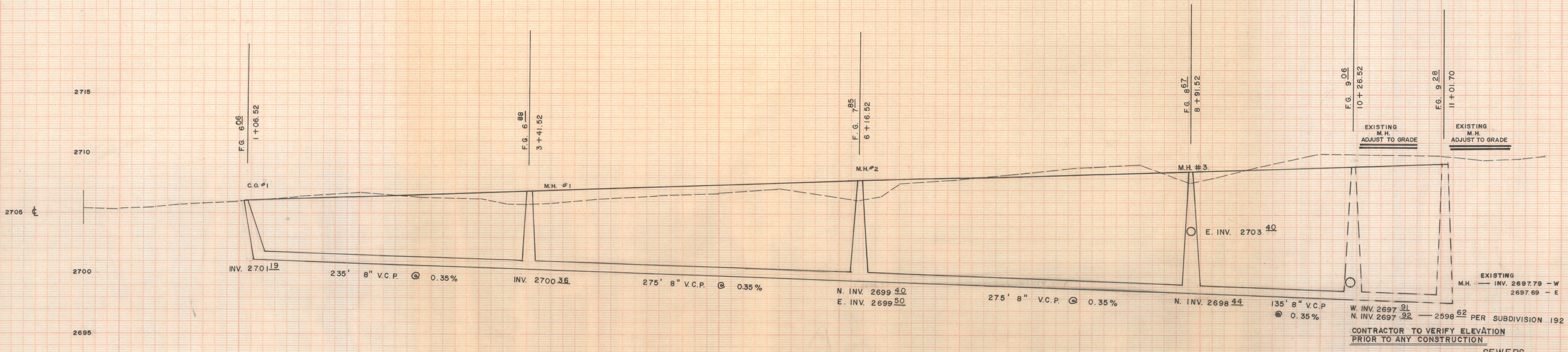


CAUTION
 AT S.T. CABLE CO.
 PRIOR TO EXCAVATION

B.M. #1 EL. 2708.85
 CROSS ON THE
 SIDEWALK ON THE
 SOUTH SIDE OF
 HELENA.

SEE SHEET #3

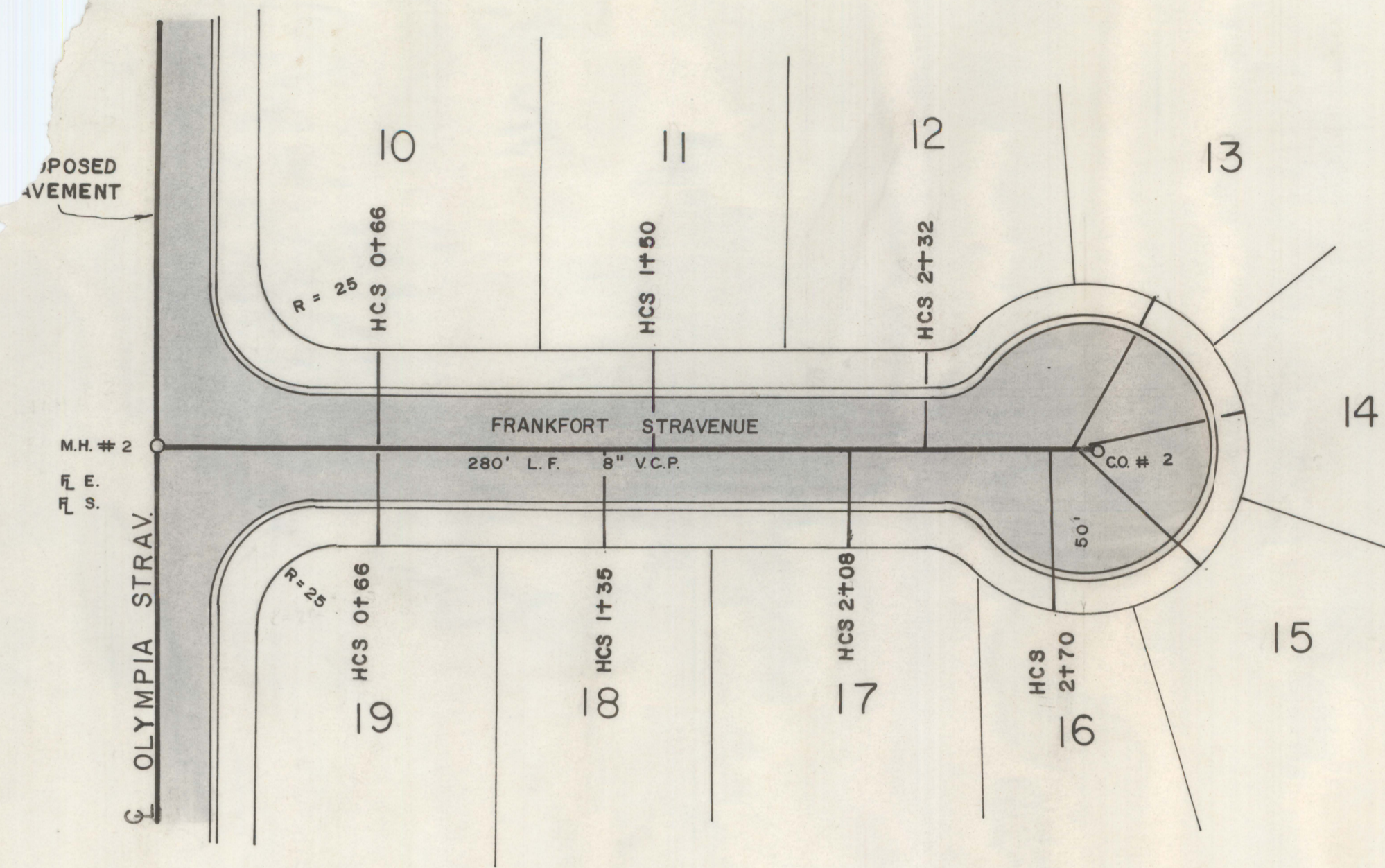
SEE SHEET #3



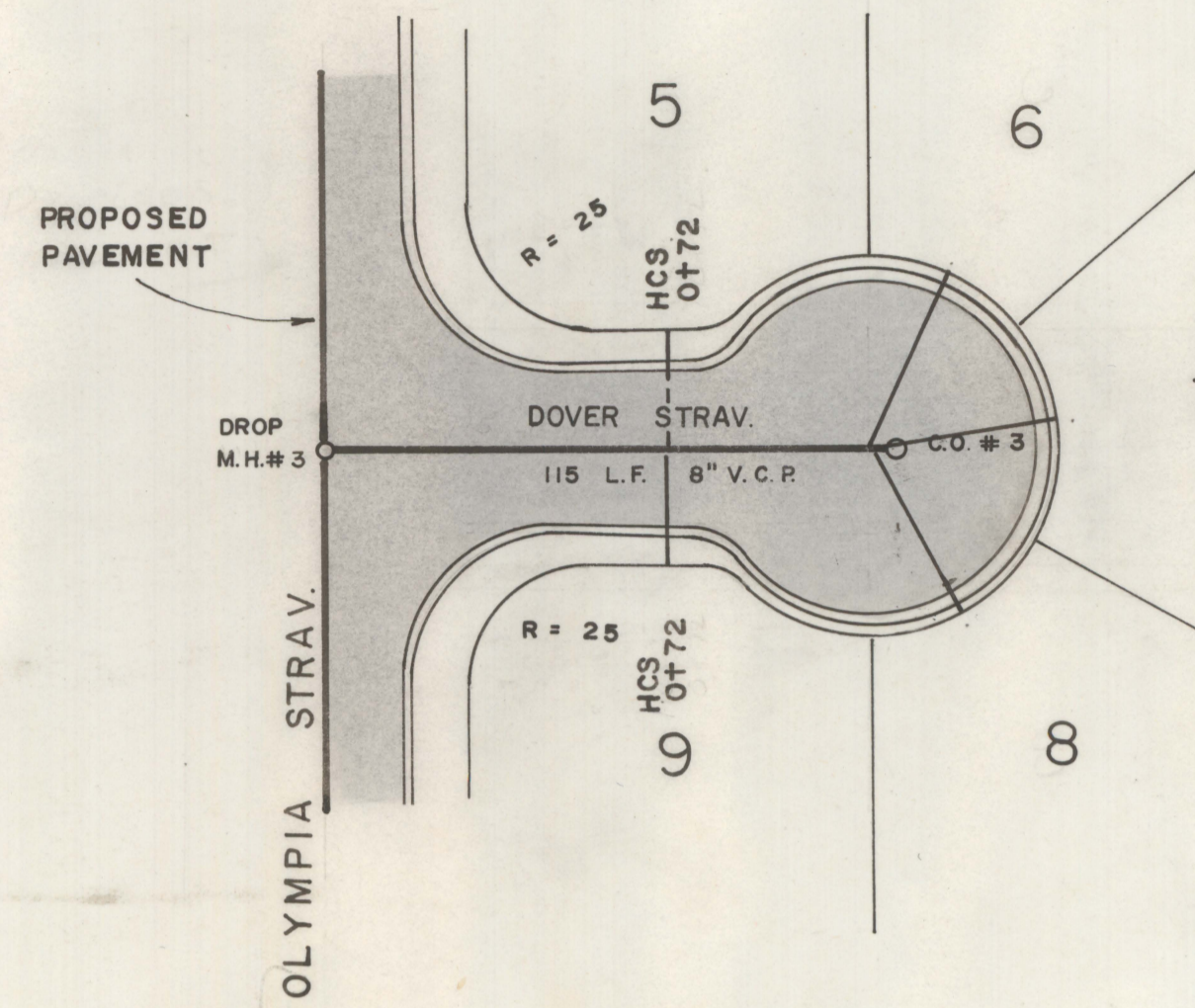
CONTRACTOR TO VERIFY ELEVATION
 PRIOR TO ANY CONSTRUCTION

SEWERS

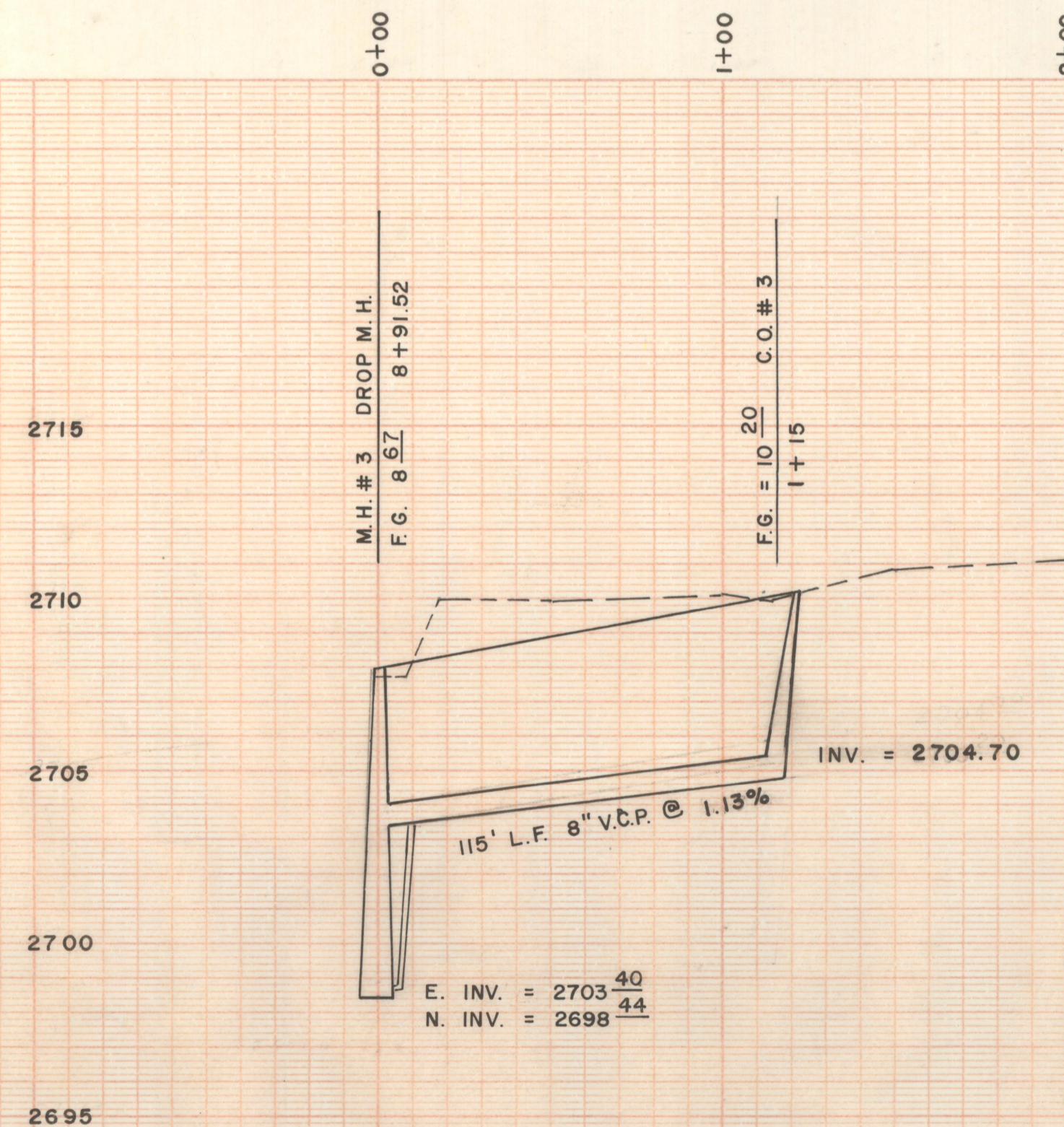
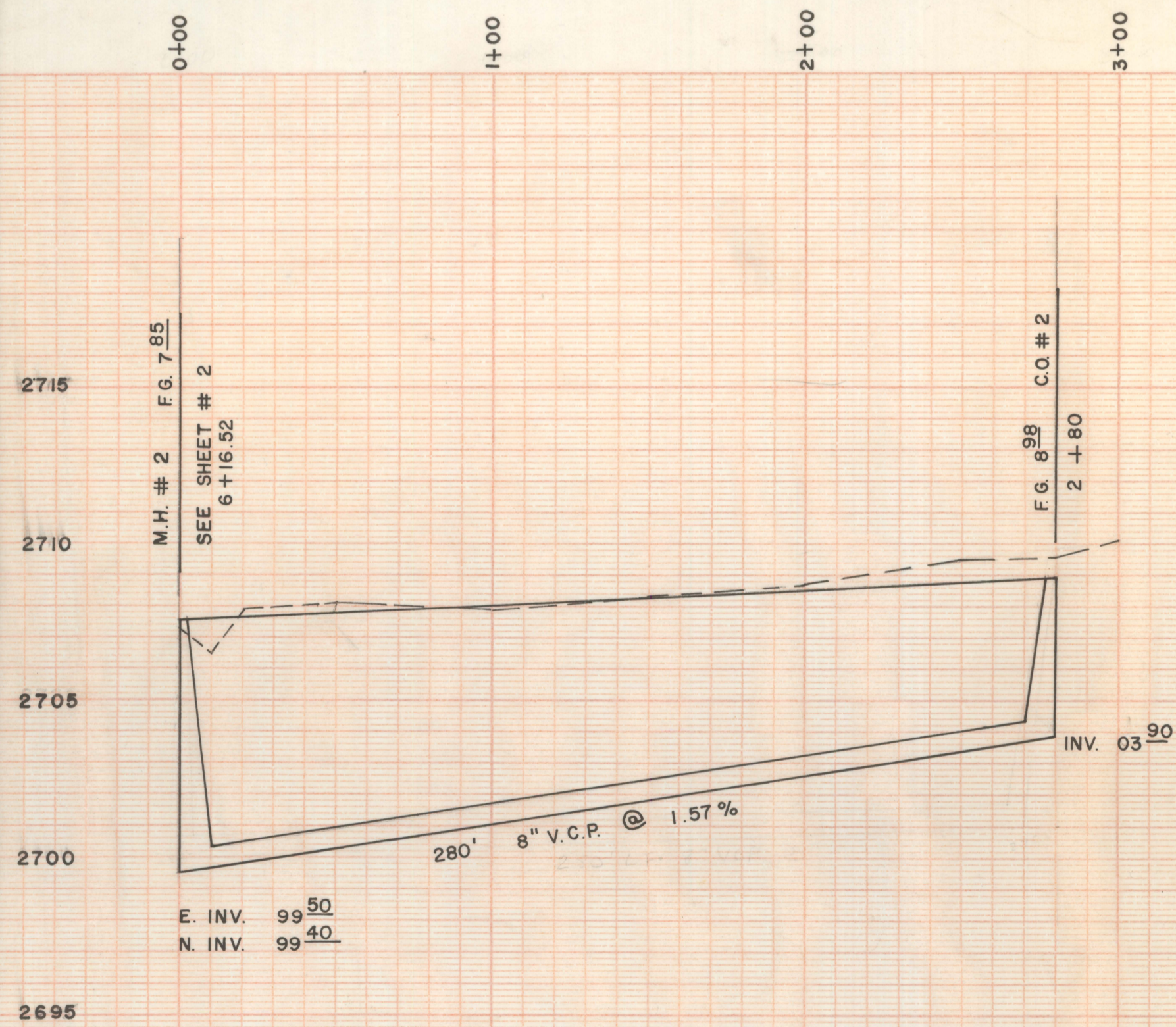
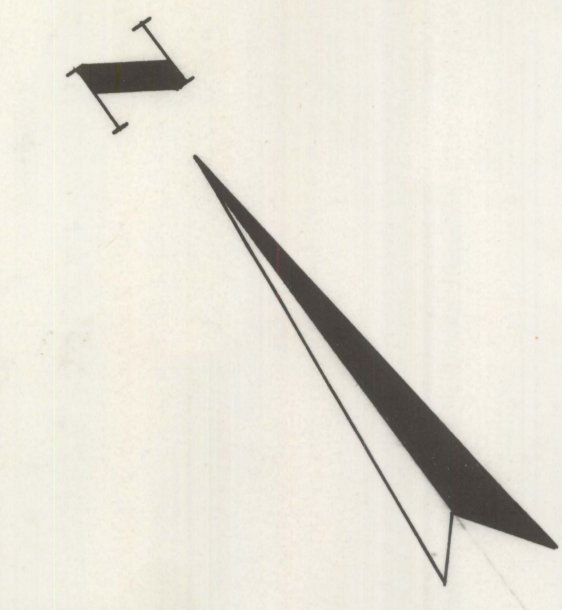
| | | | |
|---------------------|--------|--|---|
| | | MORTIMER ADDITION PAVING AND SEWER IMPROVEMENT OLYMPIA STRAVENUE | |
| | | CHARLES E. MARTIN P.E. | ROBERT F. MELLE L.S. (A JOINT VENTURE) |
| DESIGN | C.E.M. | JUNE 1971 | |
| DRAWN | R.F.M. | JOB #71-39 | |
| SCALE | | SHEET | |
| HORIZONTAL 1" = 40' | | 2 OF 5 | |
| VERTICAL 1" = 4' | | | |



CUL DU SAC LOTS
SET HCS AT $\frac{1}{2}$ OF LOTS
ON PROPERTY LINE



CUL DU SAC LOTS
SET HCS AT $\frac{1}{2}$ OF LOTS
ON PROPERTY LINE



SEWERS

MORTIMER ADDITION
PAVING AND SEWER IMPROVEMENT
OLYMPIA STRAVENUE

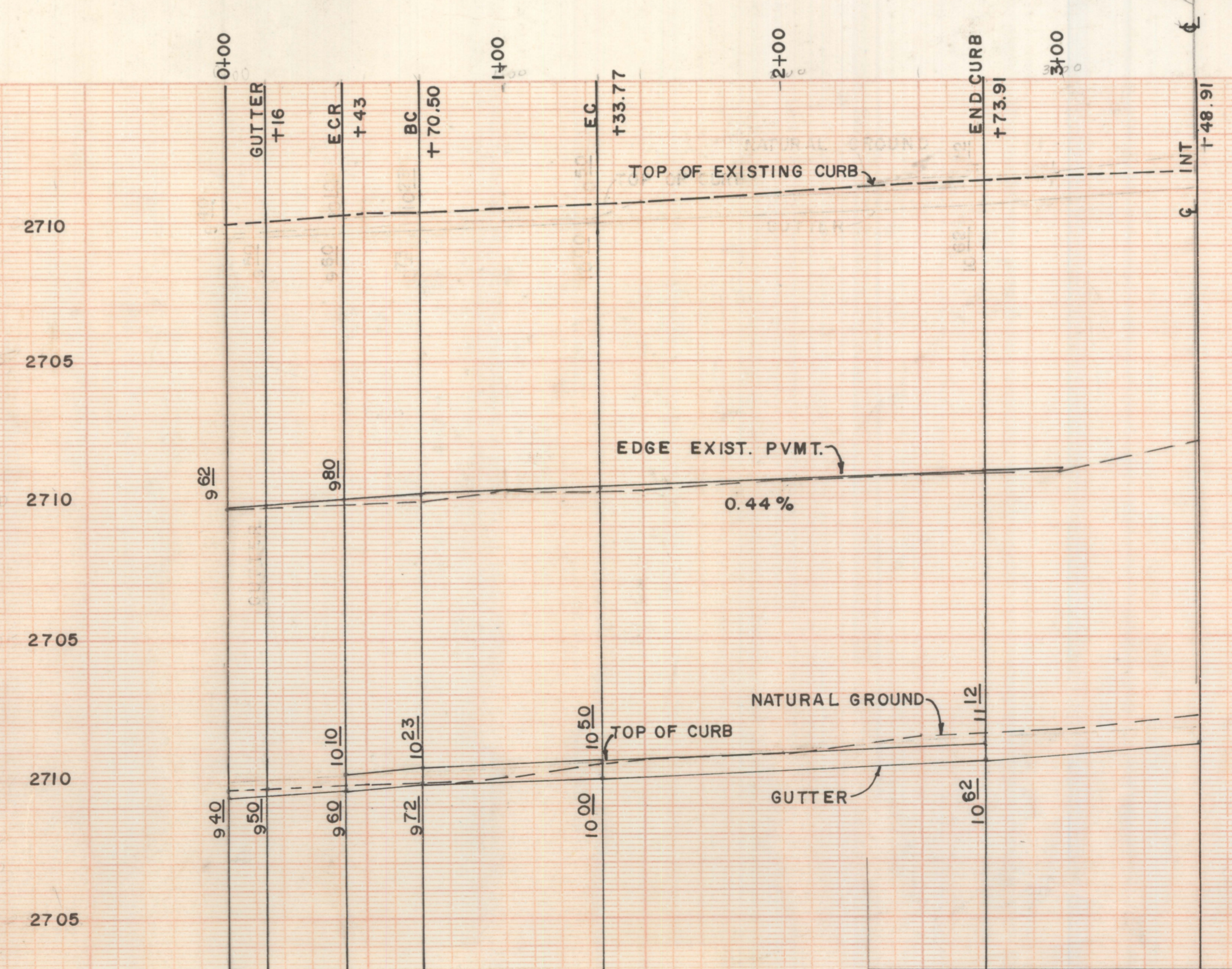
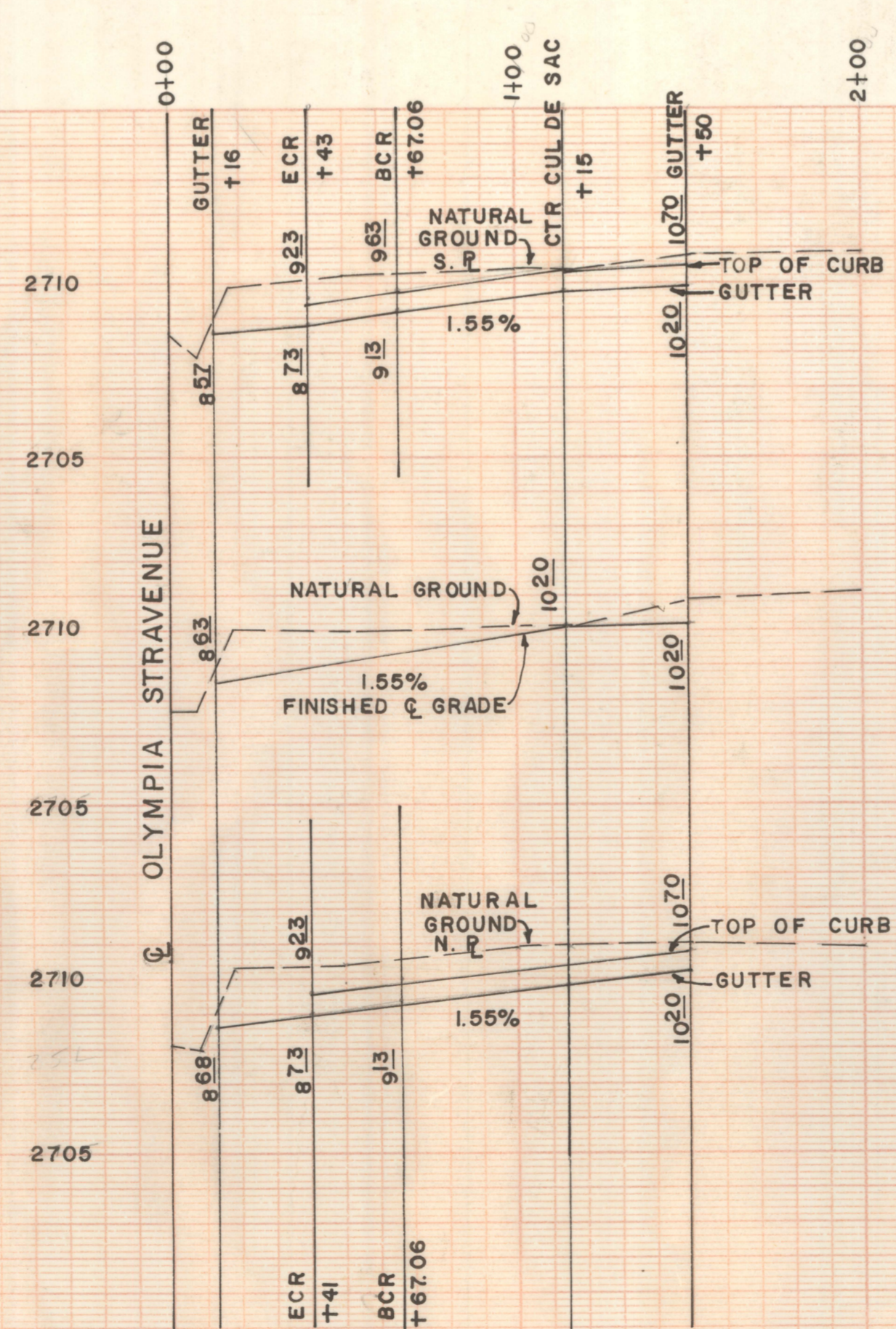
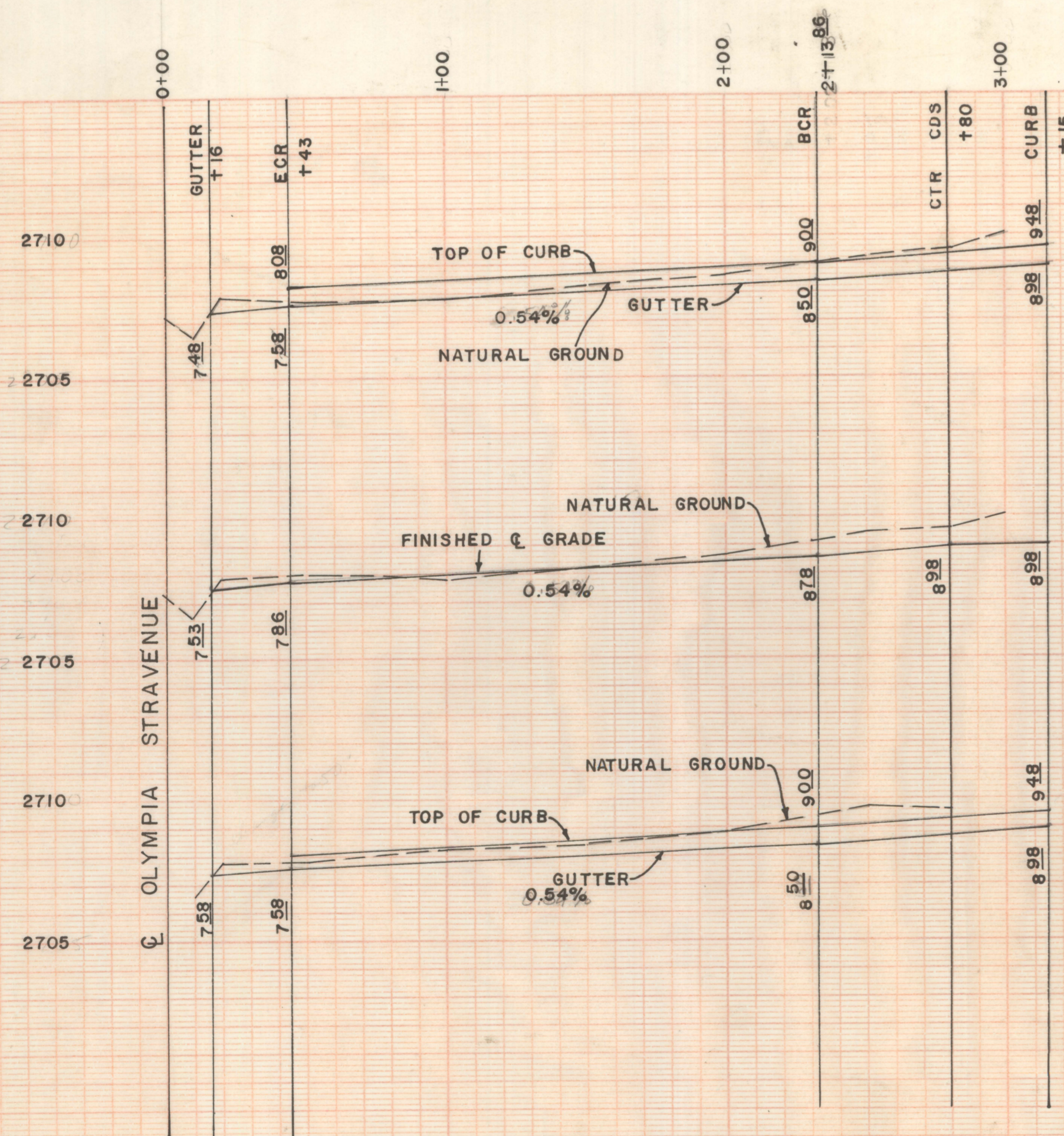
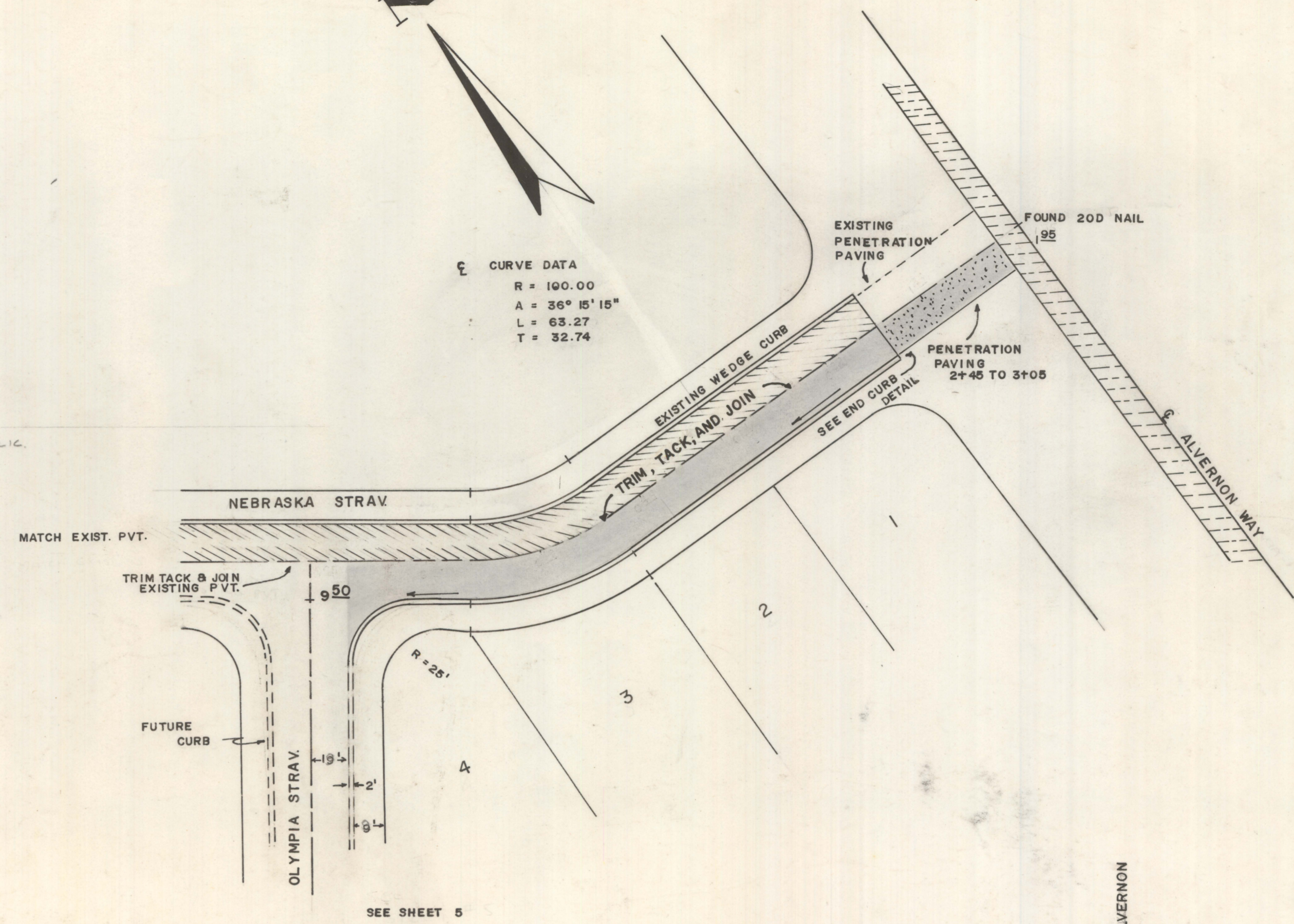
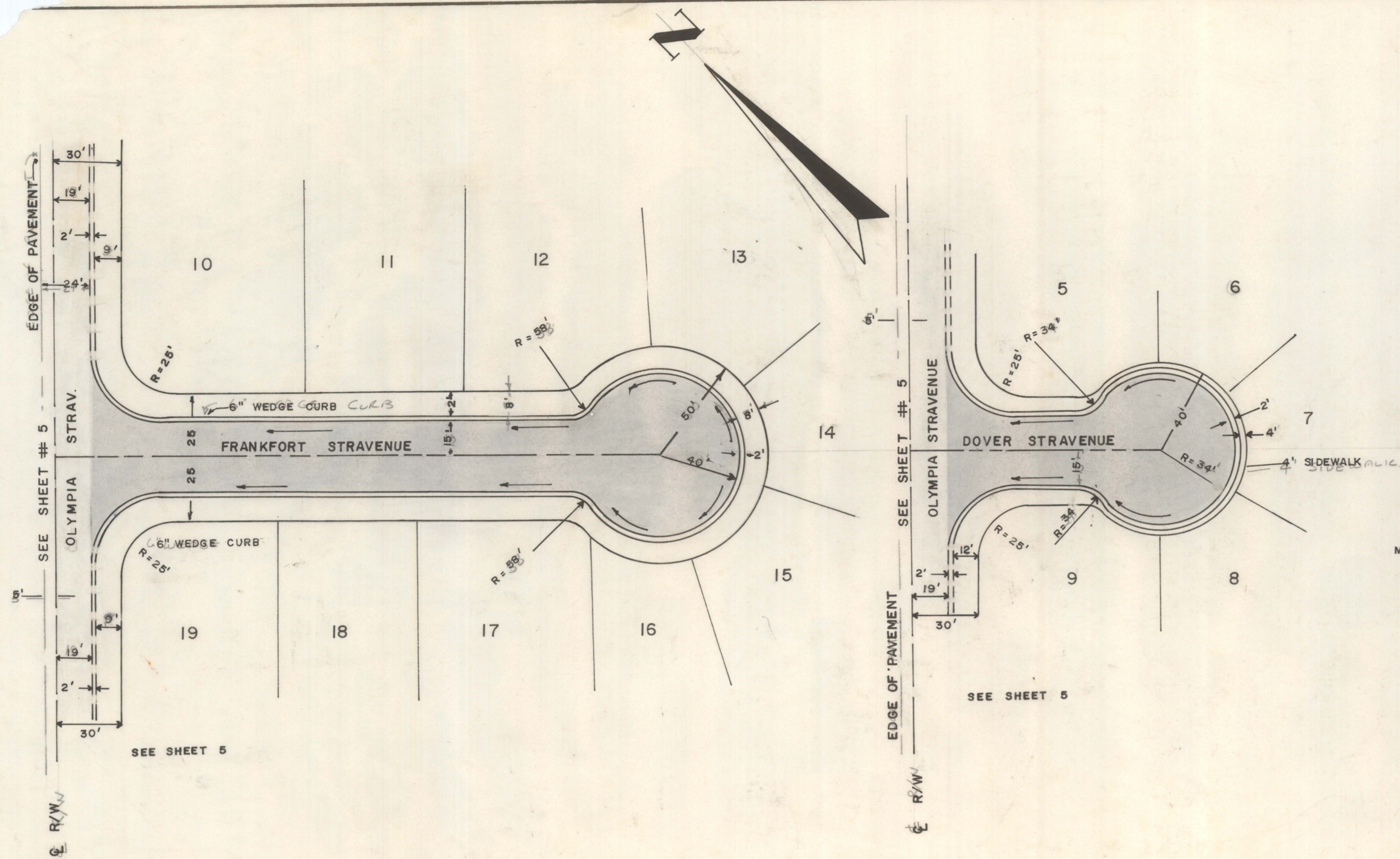
CHARLES E. MARTIN R.E. ROBERT F. MELLETT L.S.
(A JOINT VENTURE)

DESIGN C.E.M. JUNE 1971
DRAWN R.F.M. JOB #71-39

SCALE HORIZONTAL 1" = 40'
VERTICAL 1" = 4'

SHEET 3 OF 5

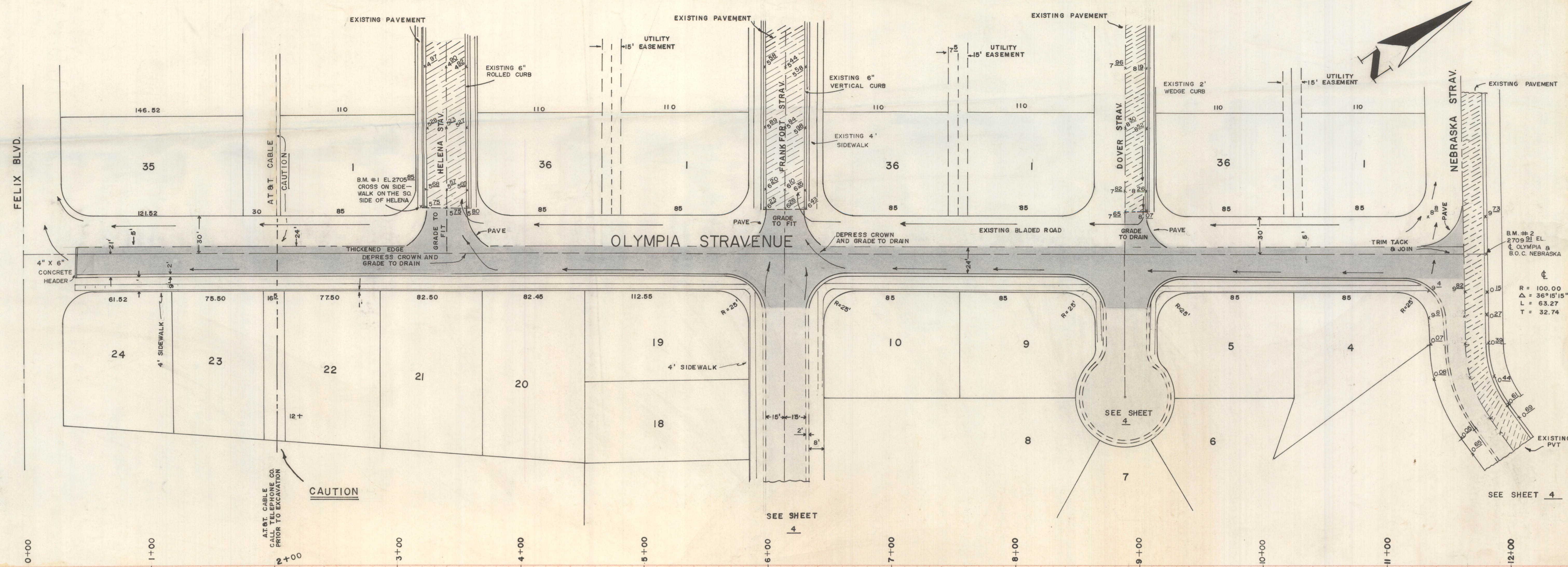




PAVING

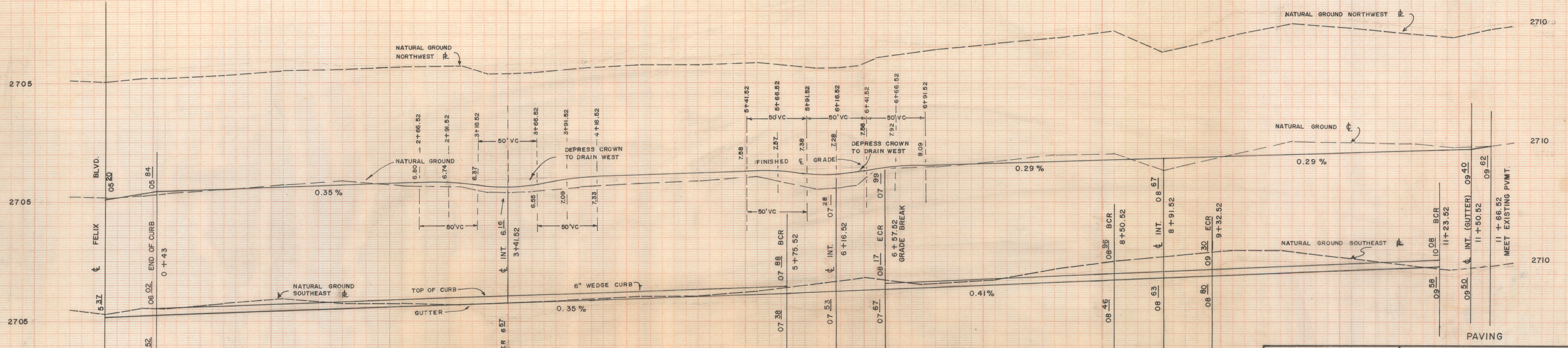


| | |
|--|------------------------|
| MORTIMER ADDITION PAVING AND SEWER IMPROVEMENT OLYMPIA STRAVENUE | |
| CHARLES E. MARTIN P.E. | ROBERT F. MELLETT L.S. |
| (A JOINT VENTURE) | |
| DESIGN | C.E.M. JUNE 1971 |
| DRAWN | R.F.M. JOB #71-39 |
| SCALE | SHEET |
| HORIZONTAL 1" = 40' | 4 OF 5 |
| VERTICAL 1" = 4' | |



B.M. #2
2709.91 EL.
OLYMPIA B.
B.O.C. NEBRASKA

R = 100.00
Δ = 36°15'15"
L = 63.27
T = 32.74



| | | | |
|---------------------|--------|---|---|
| | | MORTIMER ADDITION PAVING AND SEWER IMPROVEMENT OLYMPIA STRAVENUE | |
| | | CHARLES E. MARTIN RE. | ROBERT F. MELLEEN L.S. (A JOINT VENTURE) |
| DESIGN | C.E.M. | JUNE 1971 | |
| DRAWN | R.F.M. | JOB #71-39 | |
| SCALE | | SHEET | |
| HORIZONTAL 1" = 40' | | 5 OF 5 | |
| VERTICAL 1" = 4' | | | |

Z-2020-056-004