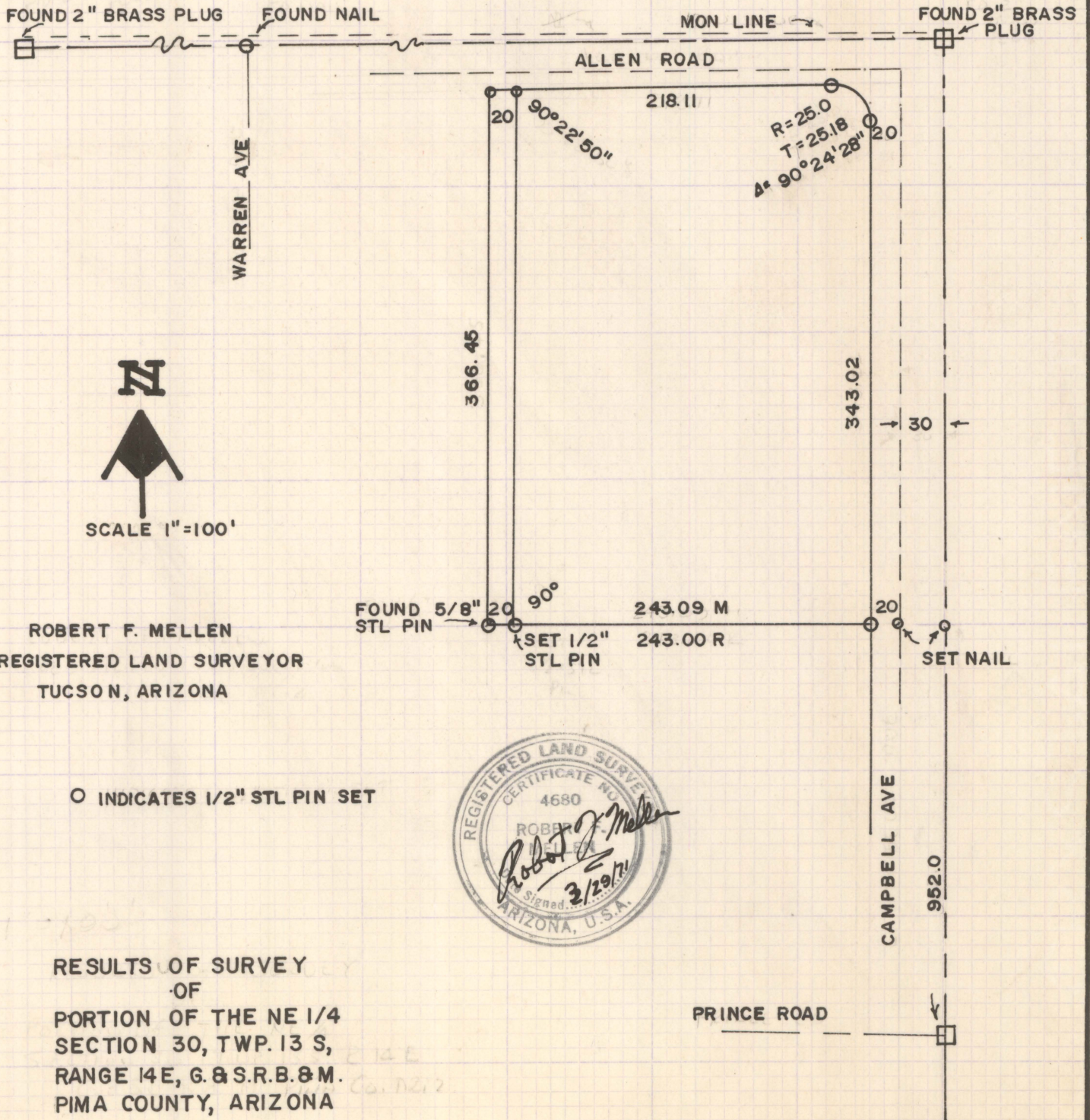


# **DISCLAIMER:**

**This unrecorded Record of Survey was donated to the City of Tucson. The City of Tucson provides this data for your personal use "as is." Additionally, the City of Tucson provides this information with the understanding that it is not guaranteed to be accurate, correct or complete and conclusions drawn from such information are the responsibility of the user.**



ROBERT F. MELLEN  
 REGISTERED LAND SURVEYOR  
 TUCSON, ARIZONA

○ INDICATES 1/2" STL PIN SET



RESULTS OF SURVEY  
 OF  
 PORTION OF THE NE 1/4  
 SECTION 30, TWP. 13 S,  
 RANGE 14E, G. & S. R. B. & M.  
 PIMA COUNTY, ARIZONA

30-13-14-71-38 IM

Z-2020-059