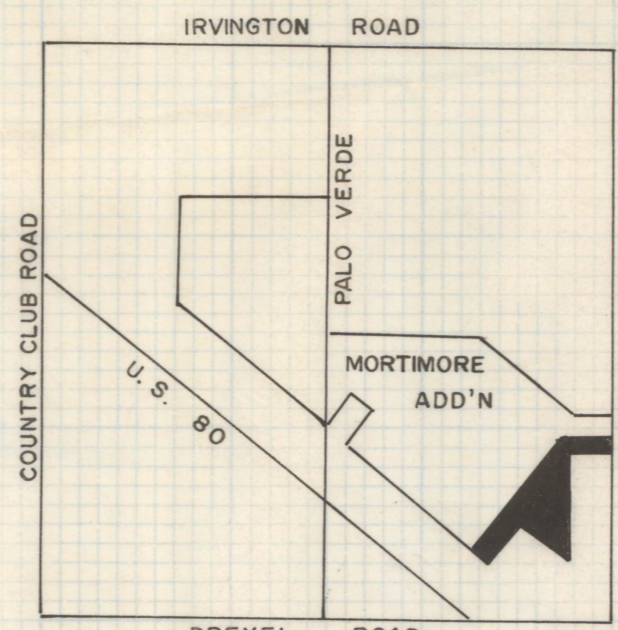
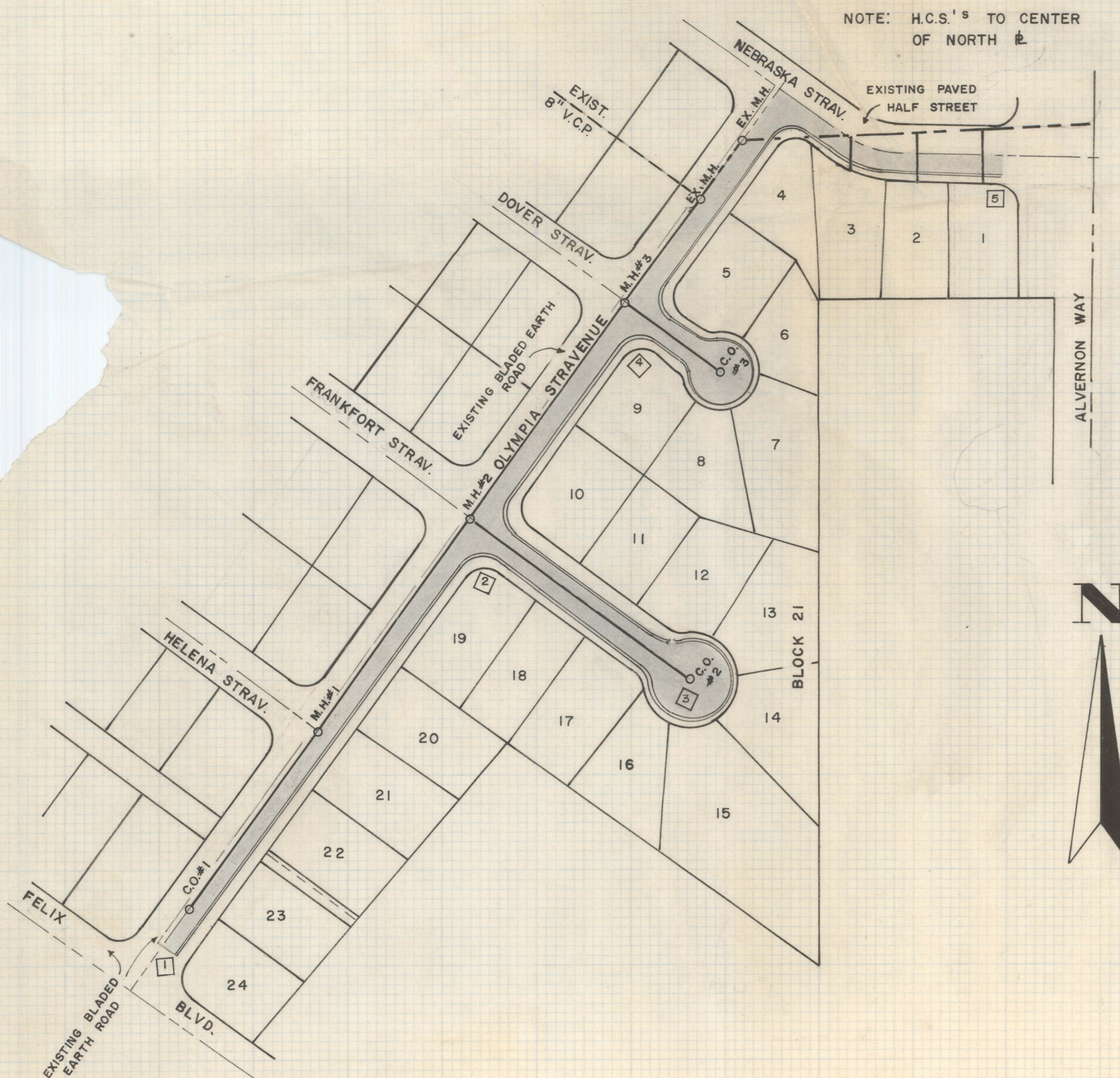
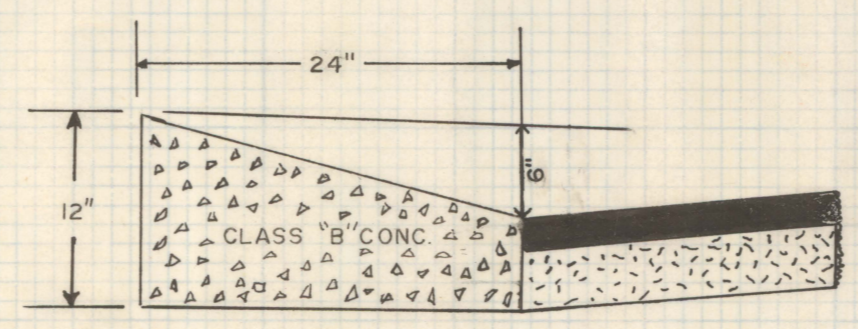
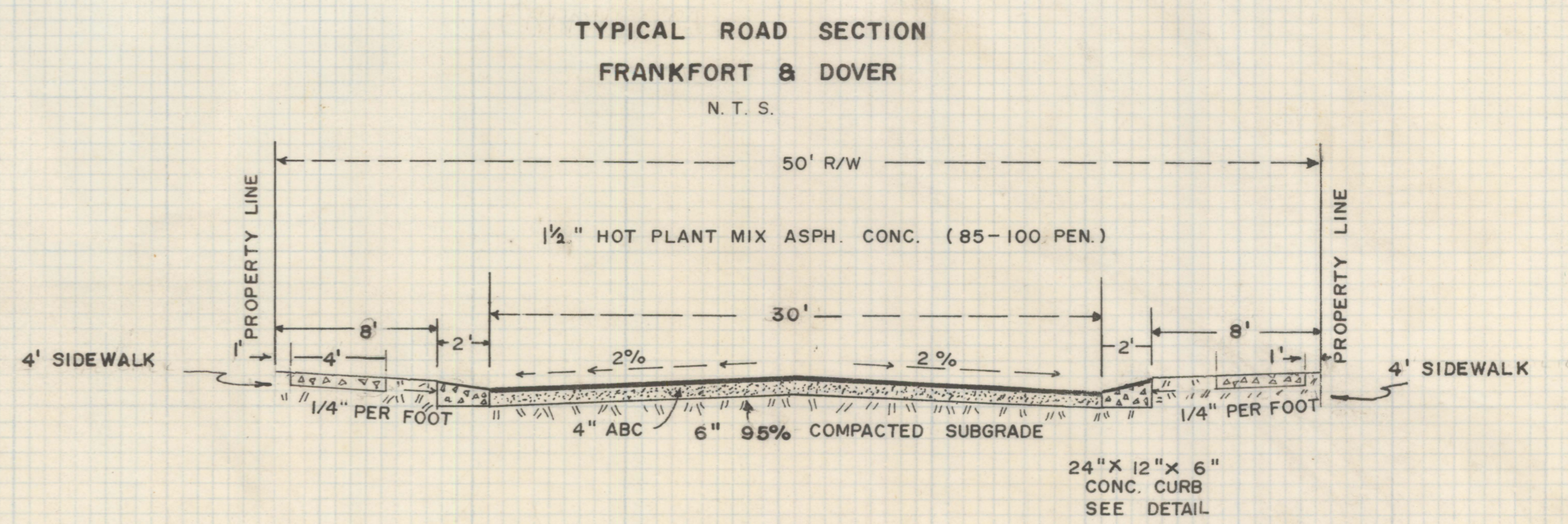
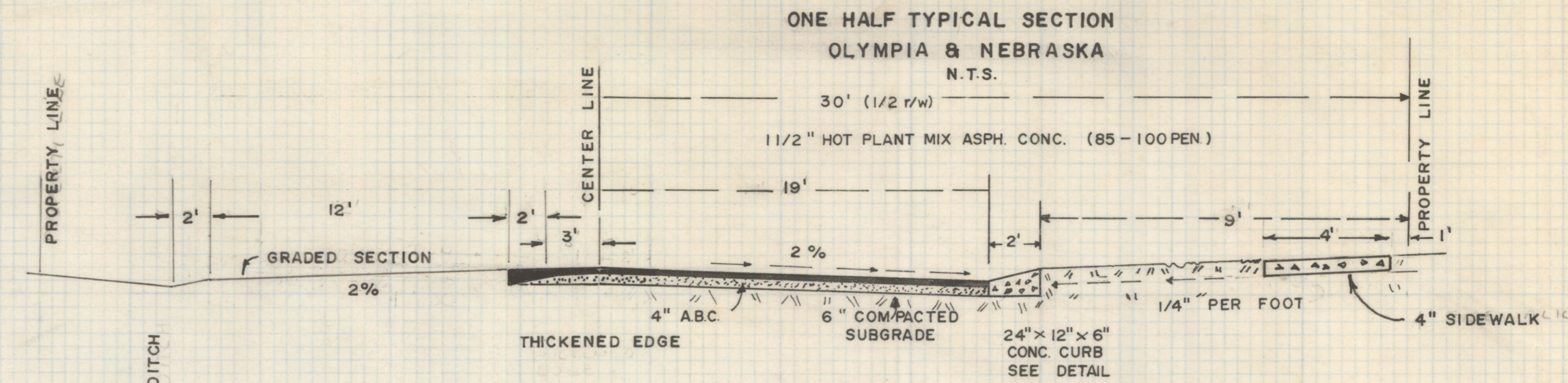


DISCLAIMER:

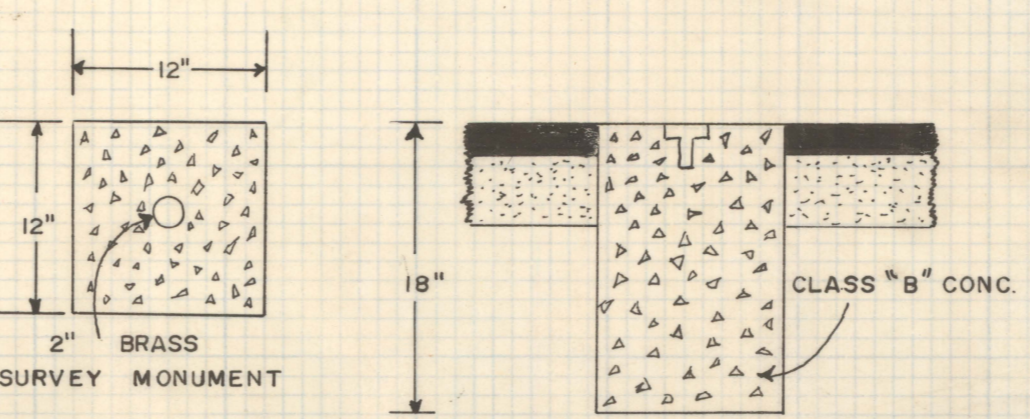
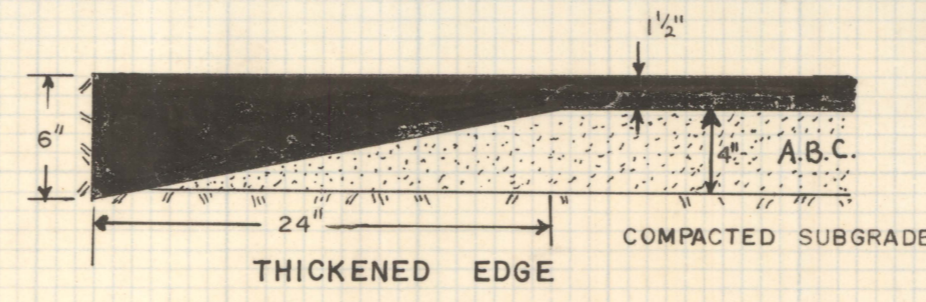
This unrecorded Record of Survey was donated to the City of Tucson. The City of Tucson provides this data for your personal use "as is." Additionally, the City of Tucson provides this information with the understanding that it is not guaranteed to be accurate, correct or complete and conclusions drawn from such information are the responsibility of the user.



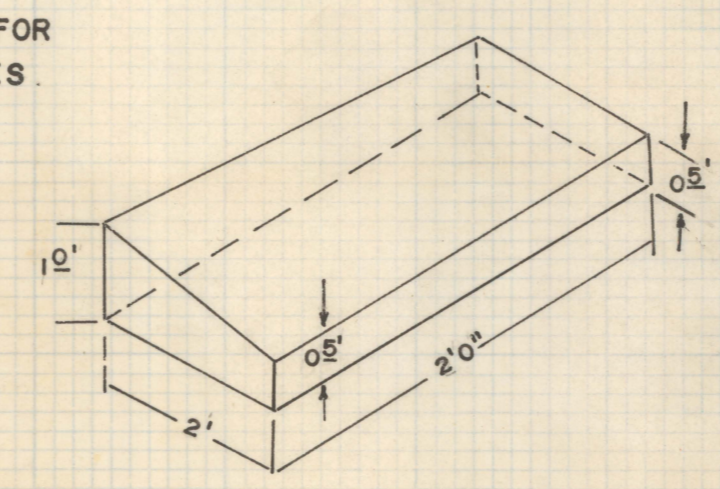
LOCATION PLAN
SECTION 4, T 15 S, R 14 E,
6 S.R.B.M., PIMA COUNTY, ARIZ.
NOT TO SCALE



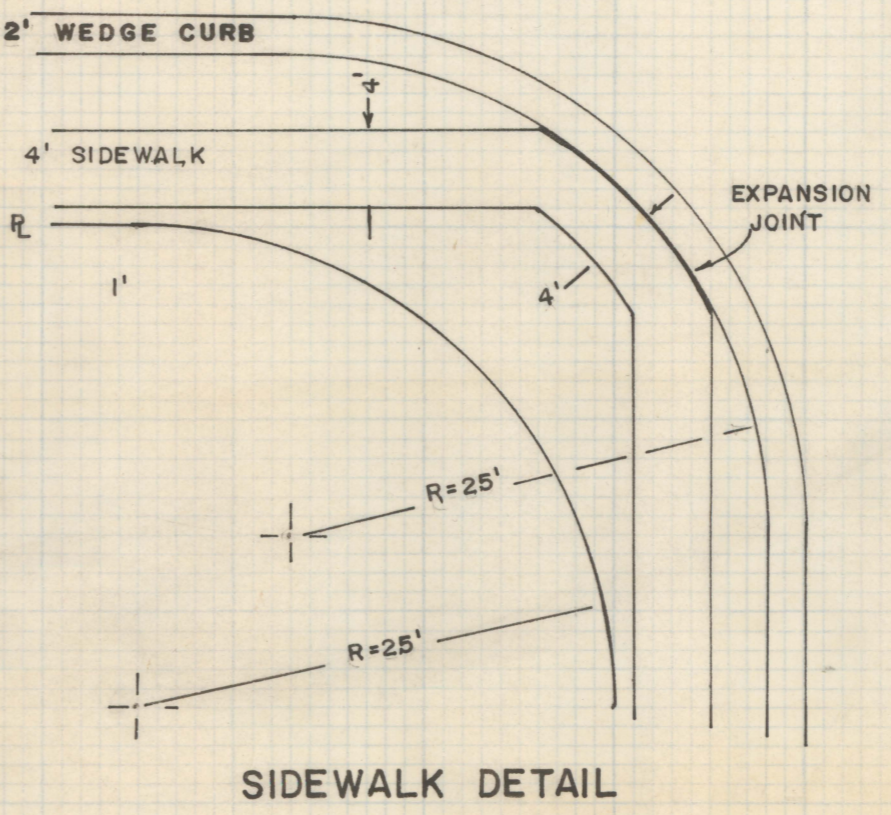
WEDGE CURB DETAIL
SCALE: 1" = 1'



SURVEY MONUMENT DETAIL
SCALE: 1" = 1'



END OF CURB DETAIL
NOT TO SCALE



SIDEWALK DETAIL

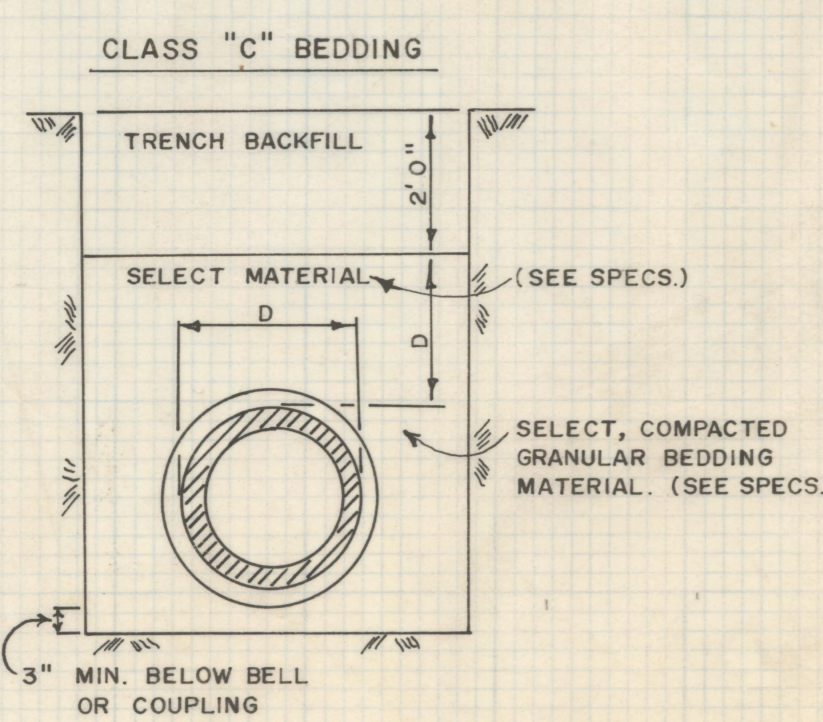
GENERAL NOTES

- ALL MATERIALS AND WORKMANSHIP FOR SEWERS ARE TO BE IN ACCORDANCE WITH STANDARD SPECIFICATIONS OF PIMA COUNTY DEPT. OF SANITATION OF PIMA COUNTY, ARIZONA, SAID SPECIFICATIONS ARE ON FILE IN THAT OFFICE.
- ALL HOUSE CONNECTIONS SEWERS SHALL HAVE A MINIMUM COVER OF FOUR (4) FEET. TYPE "A" ENCASEMENT REQUIRED FOR LESS THAN FOUR (4) FEET COVER.
- BENCH MARK ELEVATIONS ARE BASED ON PIMA COUNTY DEPT. OF SANITATION DATUM.
- ALL HOUSE CONNECTIONS SEWERS SHALL BE RUN FROM SEWER MAINS TO THE CENTER OF LOT AT PROPERTY LINE, UNLESS OTHERWISE NOTED ON PLANS.
- ALL SEWER PIPE SHALL BE V.C.P.
- HAND BACKFILL OF SELECT MATERIAL WATER SETTLED AND, OR COMPACTED AS REQUIRED BY SPECIFICATIONS TO REQUIRED DENSITY. SELECT MATERIAL MAY BE DEFINED AS EITHER IMPORTED OR TRENCH SITE EXCAVATED MATERIALS OF WHICH 75% WILL PASS THE 1/4" SIEVE, WITH ALL MATERIAL PASSING THE 3/4" SIEVE.
- SEE PLANS AND/OR SPECIFICATIONS FOR TYPE AND LOCATION OF BEDDING TO BE USED.
- "D" EQUALS O.D. OF PIPE BARREL BUT SHALL NOT BE LESS THAN 12".
- TRENCH BACKFILL: THIS MATERIAL WILL CONSIST OF 50% FINES AND SHALL NOT EXCEED 4" IN SIZE. COMPACTED AS REQUIRED BY SPECIFICATIONS.
- THE MAXIMUM CLEAR WIDTH OF TRENCH FOR PIPE SEWERS MEASURED AT THE TOP OF THE PIPE SHALL NOT THE NORMAL DIAMETER OF THE PIPE PLUS 12" (TWELVE).
- N.T.S. INDICATES "NOT TO SCALE."
- BITUMINOUS MIXTURES: COMPOSITION OF MIXTURES FOR THE 85-100 PENETRATION ASPHALT, THE FOLLOWING GRADATION SHALL APPLY:

| SCREEN SIZE | % PASSING BY WEIGHT |
|-------------|---------------------|
| 3/4" | 100 |
| 3/8" | 70-90 |
| #4 | 45-70 |
| #8 | 25-50 |
| #40 | 10-25 |
| #200 | 3-8 |

5.75% - 7.0% ASPHALT BY WEIGHT
260° TO 275° MIXING TEMPERATURE
- ALL MATERIAL & WORKMANSHIP FOR PAVING TO BE IN ACCORDANCE WITH PIMA COUNTY "STANDARD IMPROVEMENT DISTRICT SPECIFICATIONS", EXCEPT ASPHALT CEMENT SHALL BE PENETRATION GRADE 85-100 AND CONFORM TO THE REQUIREMENTS OF A.A.S.H.O. SPEC. M-20, REVISED SEC. VIII.
- PENETRATION GRADE 85-100 ASPHALT PAVING SPECS:
(A) AGGREGATES: THE MINERAL AGGREGATES SHALL SWELL MORE THAN 0.06" WHEN TESTED IN ACCORDANCE WITH A.A.S.H.O. DESIGNATION T-101-60, METHOD B.
- THE UNPAVED PORTION OF ANY HALF PAVEMENT WILL BE GRADED FLUSH WITH FINISHED PAVEMENT.
- [2] INDICATES LOCATION OF SOIL TEST

NOTE
STANDARD SPECIFICATIONS, PIMA COUNTY IMPROVEMENT DISTRICT, 1971, SHALL APPLY, EXCEPT AS STATED IN GENERAL NOTES.



CONTRACTOR IS RESPONSIBLE FOR COORDINATION WITH UTILITIES.

PAVING AND SEWER IMPROVEMENT
FOR
OLYMPIA STRAVENUE
LOTS 1-24, BLOCK 21
DEVELOPER: ROBERT ABRIL
40 N SWAN SUITE 217
TUCSON, ARIZONA

