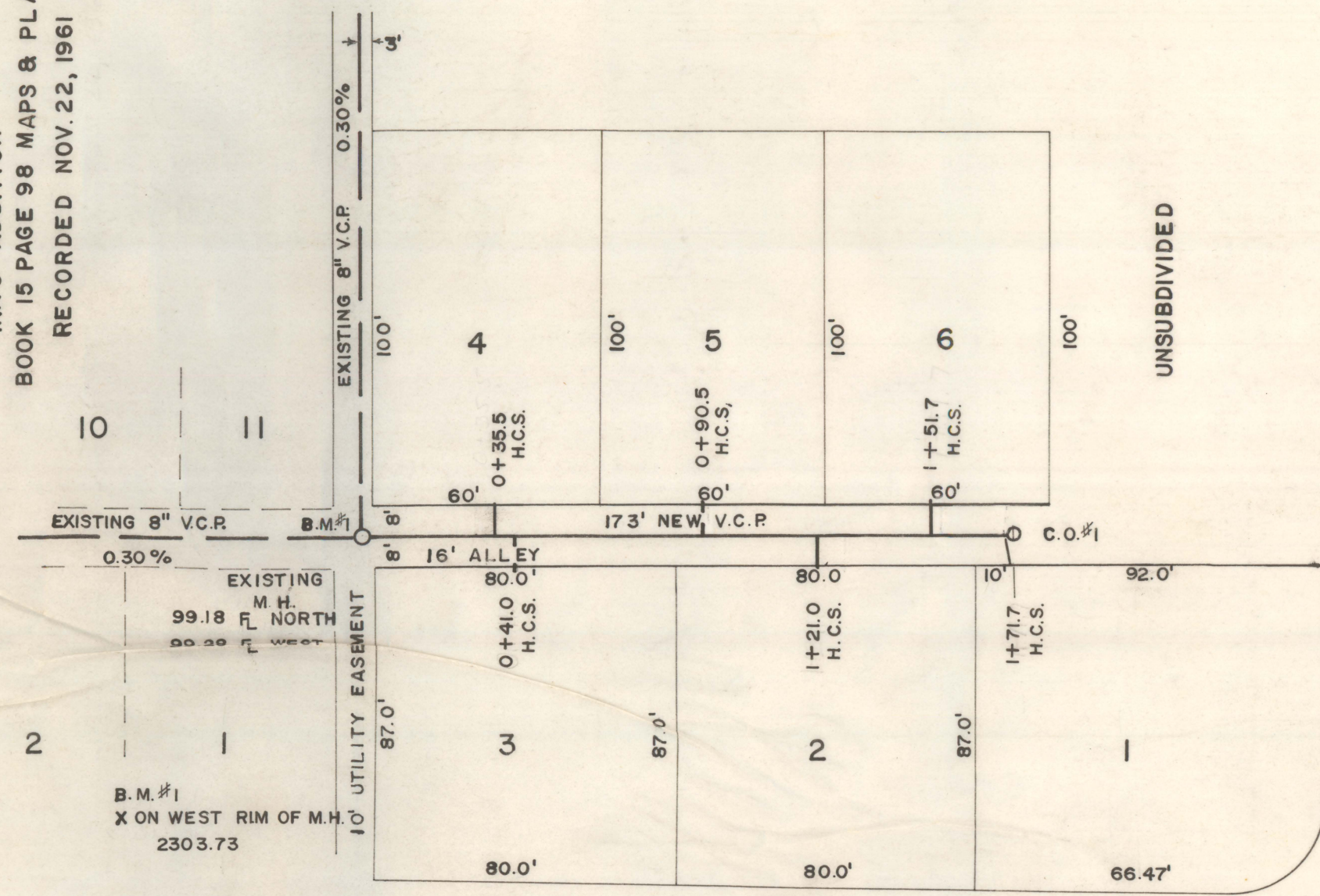


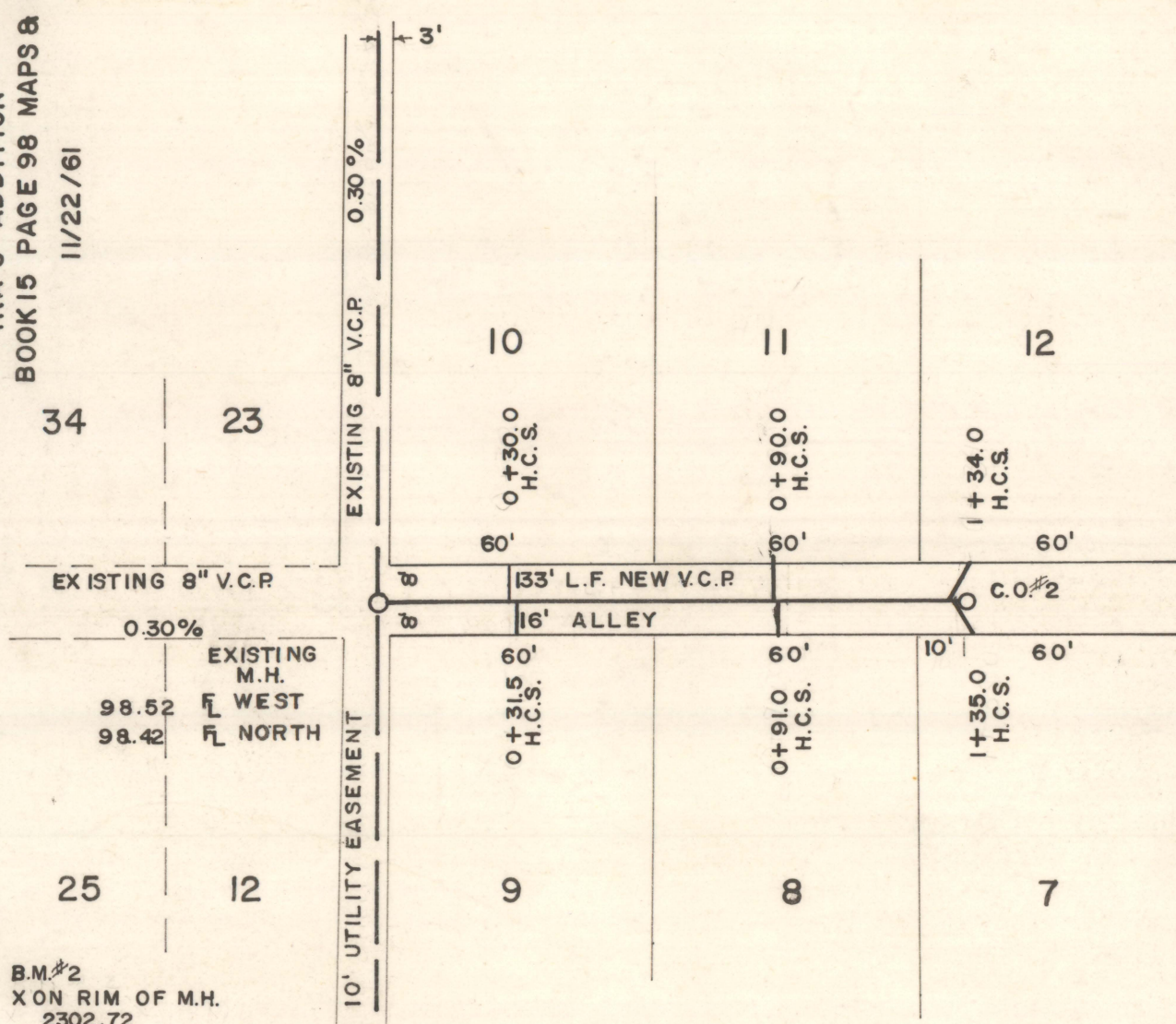
DISCLAIMER:

This unrecorded Record of Survey was donated to the City of Tucson. The City of Tucson provides this data for your personal use "as is." Additionally, the City of Tucson provides this information with the understanding that it is not guaranteed to be accurate, correct or complete and conclusions drawn from such information are the responsibility of the user.

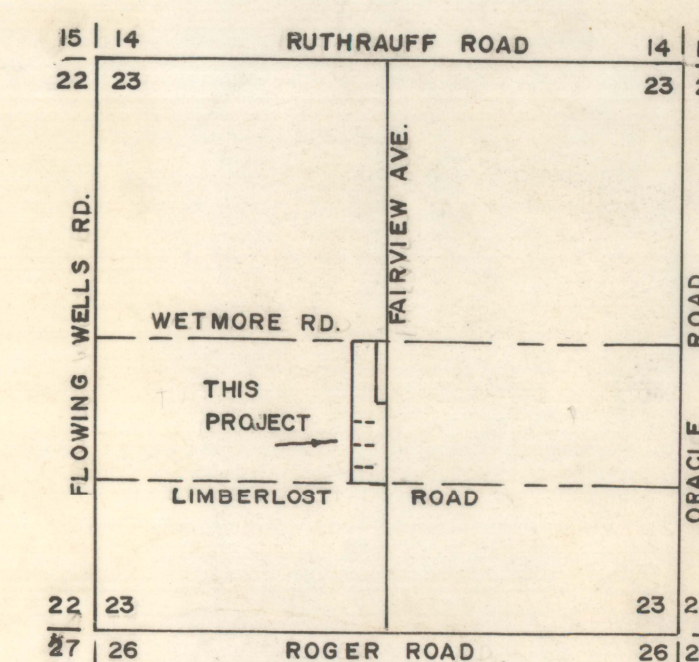
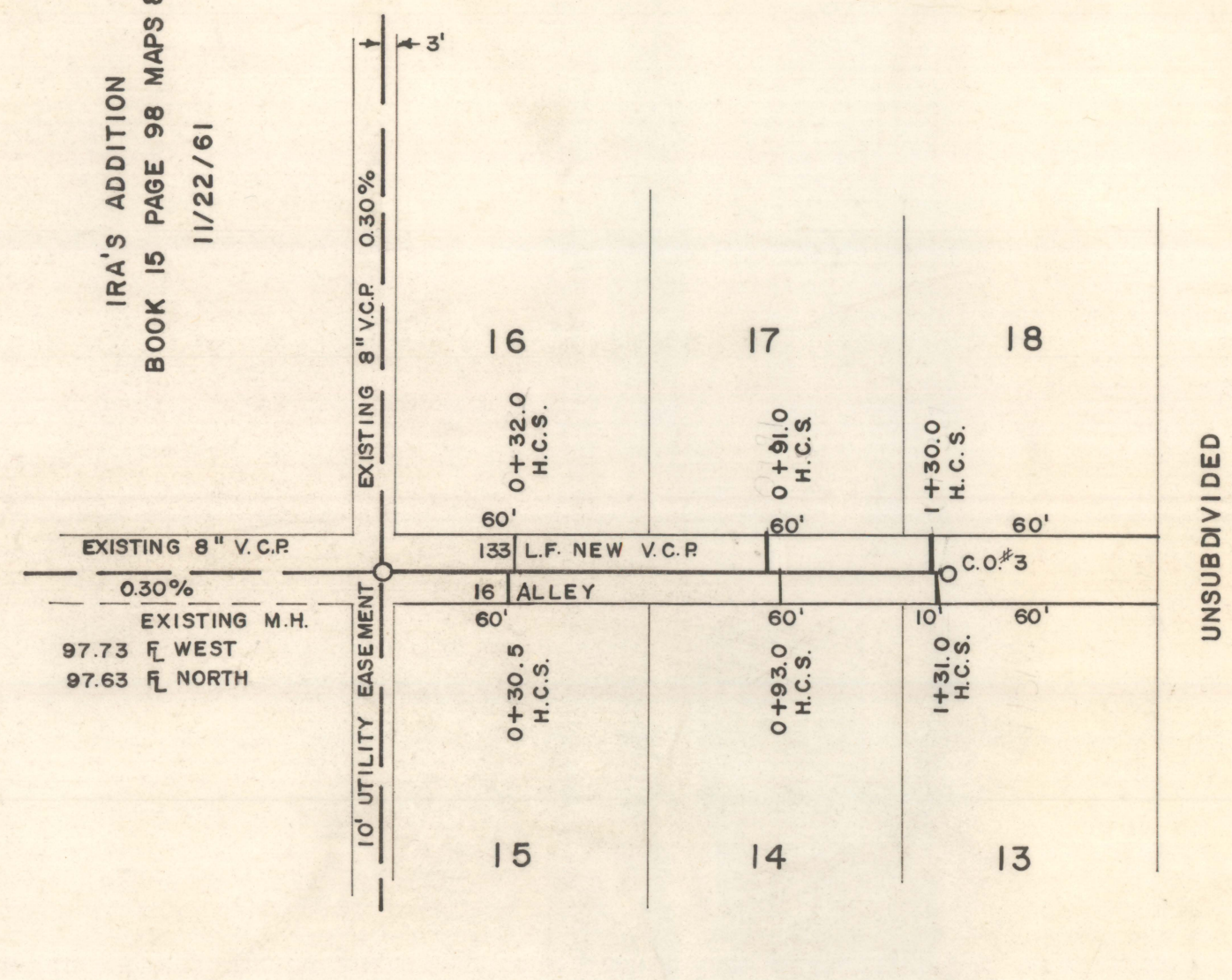
IRA'S ADDITION
BOOK 15 PAGE 98 MAPS & PLATS
RECORDED NOV. 22, 1961



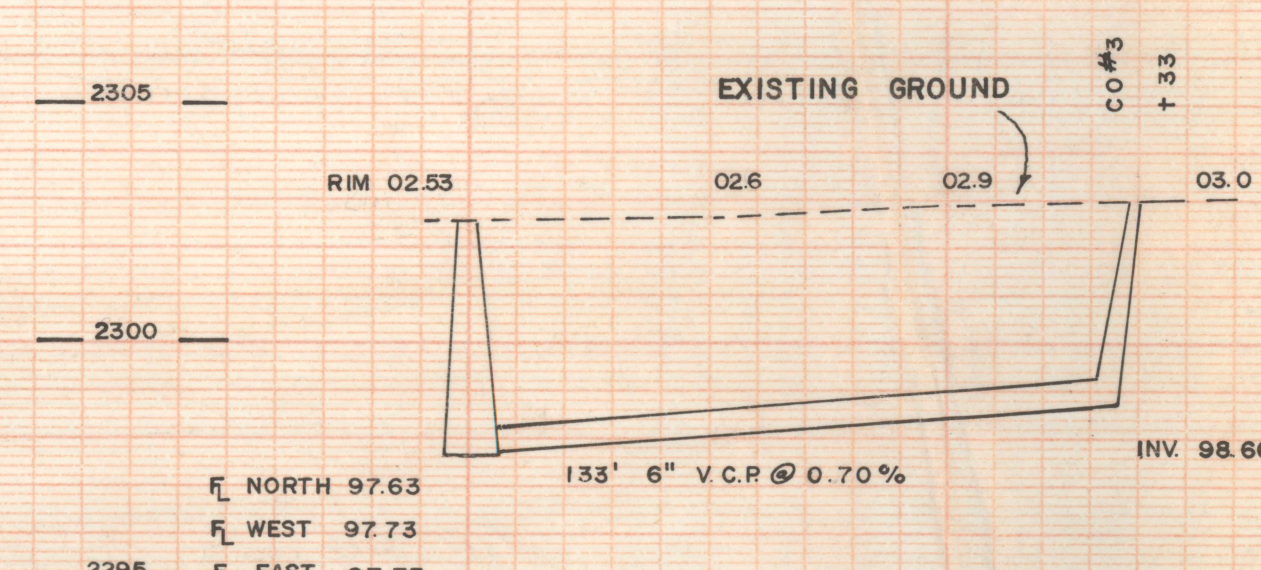
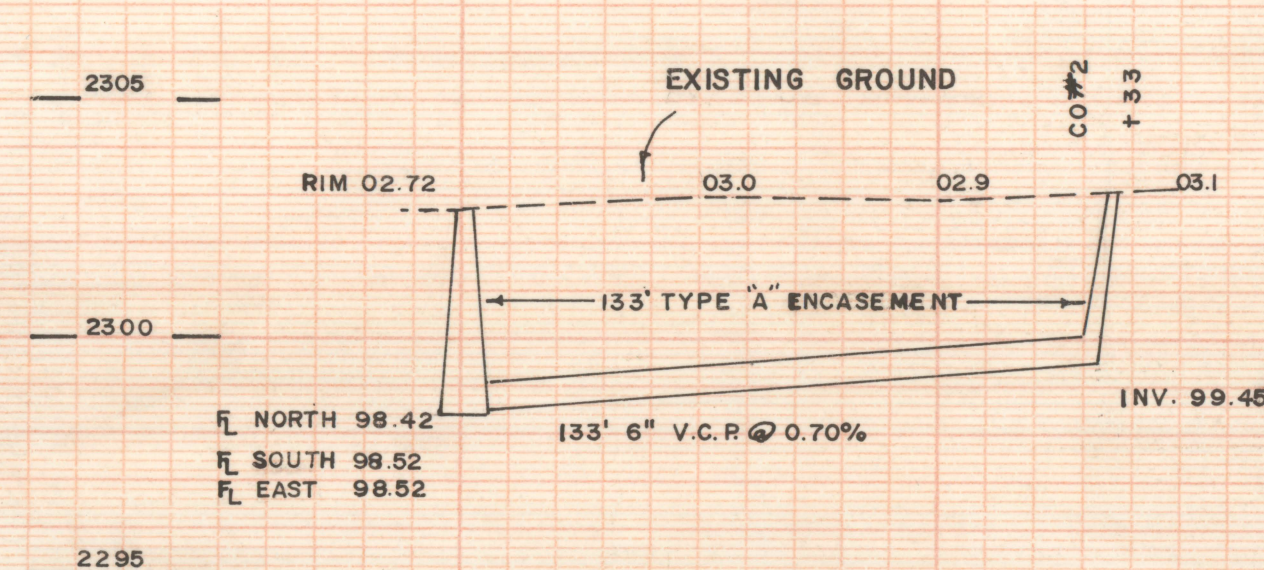
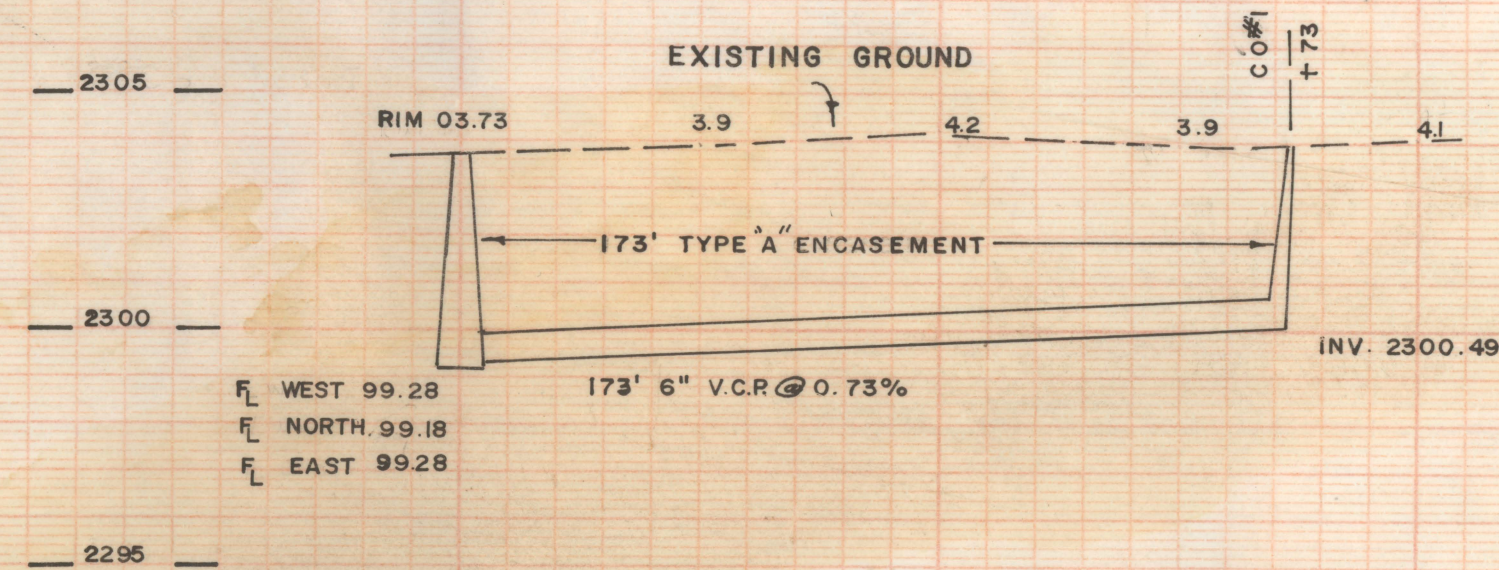
IRA'S ADDITION
BOOK 15 PAGE 98 MAPS & PLATS
11/22/61



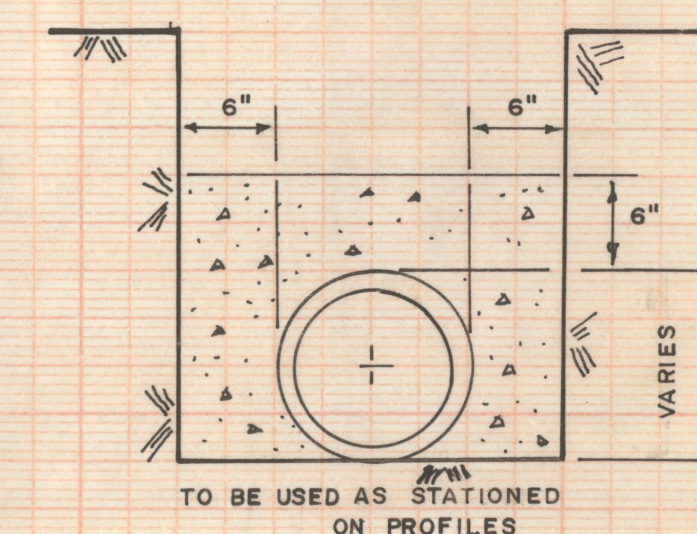
IRA'S ADDITION
BOOK 15 PAGE 98 MAPS & PLATS
11/22/61



LOCATION MAP
SECTION 23, T13 S, R. 13 E.
PIMA COUNTY, ARIZONA
G.S.S.R.B. & M.



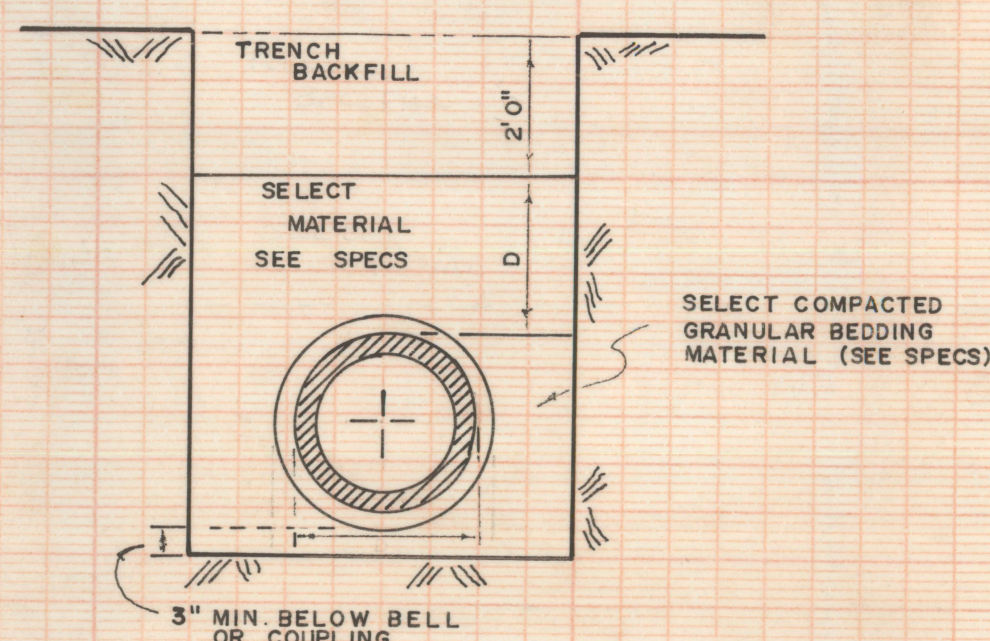
CONCRETE CAP DETAIL TYPE "A" ENCASUREMENT



GENERAL NOTES

1. ALL MATERIALS AND WORKMANSHIP FOR SEWERS ARE TO BE IN ACCORDANCE WITH STANDARD SEWER SPECIFICATIONS OF PIMA COUNTY DEPT. OF SANITATION OF PIMA COUNTY, ARIZONA, SAID SPECIFICATIONS ARE ON FILE IN THAT OFFICE.
2. ALL HOUSE CONNECTION SEWERS SHALL HAVE A MINIMUM COVER OF FOUR (4) FEET TYPE "A" ENCASUREMENT REQUIRED FOR LESS THAN FOUR (4) FEET COVER.
3. BENCH MARK ELEVATION ARE BASED ON PIMA COUNTY DEPT. OF SANITATION DATUM.
4. ALL HOUSE CONNECTION SEWERS SHALL BE RUN FROM SEWER MAINS TO THE CENTER OF LOT AT PROPERTY LINE, UNLESS OTHERWISE NOTED ON PLANS.
5. ALL SEWER PIPE SHALL BE V.C.P.
6. HAND BACKFILL OF SELECT MATERIAL WATER SETTLED AND, OR COMPACTED AS REQUIRED BY SPECIFICATIONS TO REQUIRED DENSITY. SELECT MATERIAL MAY BE DEFINED AS EITHER IMPORTED OR TRENCH SITE EXCAVATED MATERIALS OF WHICH 75% WILL PASS THE 1/4" SIEVE, WITH ALL MATERIAL PASSING THE 3/4" SIEVE.
7. SEE PLANS AND/OR SPECIFICATIONS FOR TYPE AND LOCATION OF BEDDING TO BE USED.
8. "D" EQUALS O.D. OF PIPE BARREL BUT SHALL NOT BE LESS THAN 12".
9. TRENCH BACKFILL: THIS MATERIAL WILL CONSIST OF 50% FINES AND SHALL NOT EXCEED 4" IN SIZE, COMPACTED AS REQUIRED BY SPECIFICATIONS.
10. THE MAXIMUM CLEAR WIDTH OF TRENCH FOR PIPE SEWERS MEASURED AT THE TOP OF THE PIPE SHALL NOT EXCEED THE NOMINAL DIAMETER OF THE PIPE PLUS TWENTY-FOUR (24) INCHES.
11. CONTRACTORS ARE TO VERIFY ELEVATIONS OF MANHOLES PRIOR TO CONSTRUCTION.

CLASS "C" BEDDING



AS BUILT
DATE: 9/2/71

SPONSOR
HEINZ WEGNER
1902 WEST PRINCE RD.
TUCSON, ARIZONA

PIMA COUNTY, ARIZONA WEGNER ADDITION SEWER IMPROVEMENT	
CHARLES E. MARTIN P.E.	ROBERT F. MELLETT R.L.S.
(A JOINT VENTURE)	
DRAWN BY I.M.	DATE MAY 3, 1971
DESIGN BY C.E.M.	JOB NO. 71-63
SCALE	
HORIZONTAL 1" = 40'	SHEET 1 OF 1
VERTICAL 1" = 4'	