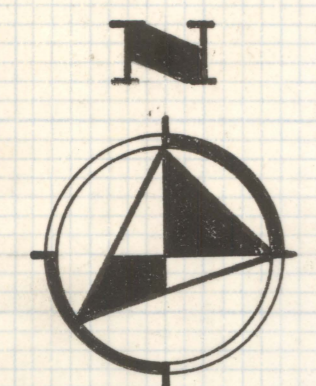
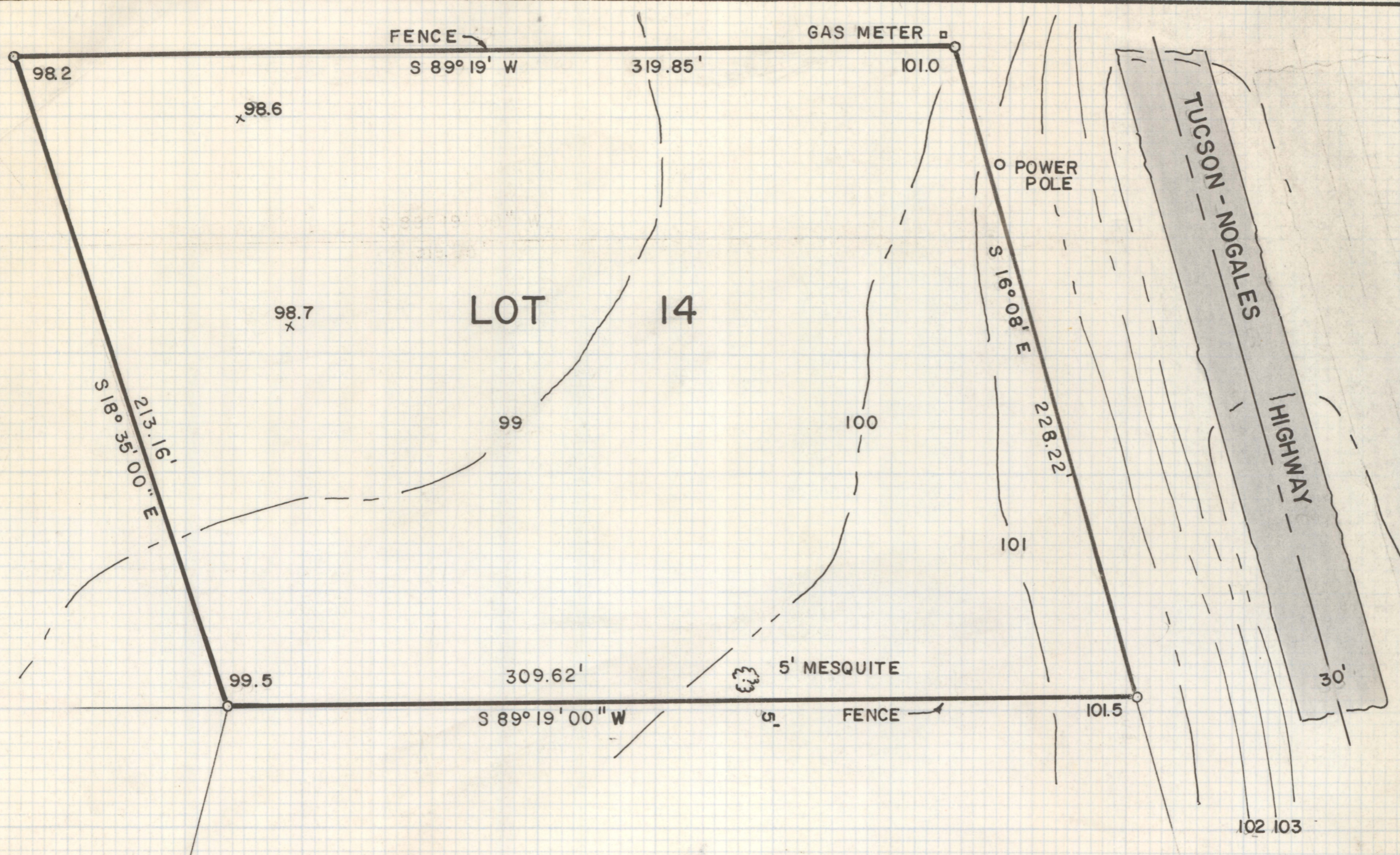


DISCLAIMER:

This unrecorded Record of Survey was donated to the City of Tucson. The City of Tucson provides this data for your personal use "as is." Additionally, the City of Tucson provides this information with the understanding that it is not guaranteed to be accurate, correct or complete and conclusions drawn from such information are the responsibility of the user.



SCALE 1" = 40'

RESULTS OF
TOPOGRAPHIC SURVEY
OF
LOT 14 OF TURNER ACRES SUBDIVISION
AS RECORDED IN BOOK 8 AT PAGE 55
OF MAPS AND PLATS, PIMA COUNTY,
ARIZONA



NOTE

THIS MAP DOES NOT REPRESENT
A BOUNDARY SURVEY

ROBERT F. MELLEN
REGISTERED LAND SURVEYOR
TUCSON, ARIZONA

Z-2020-065