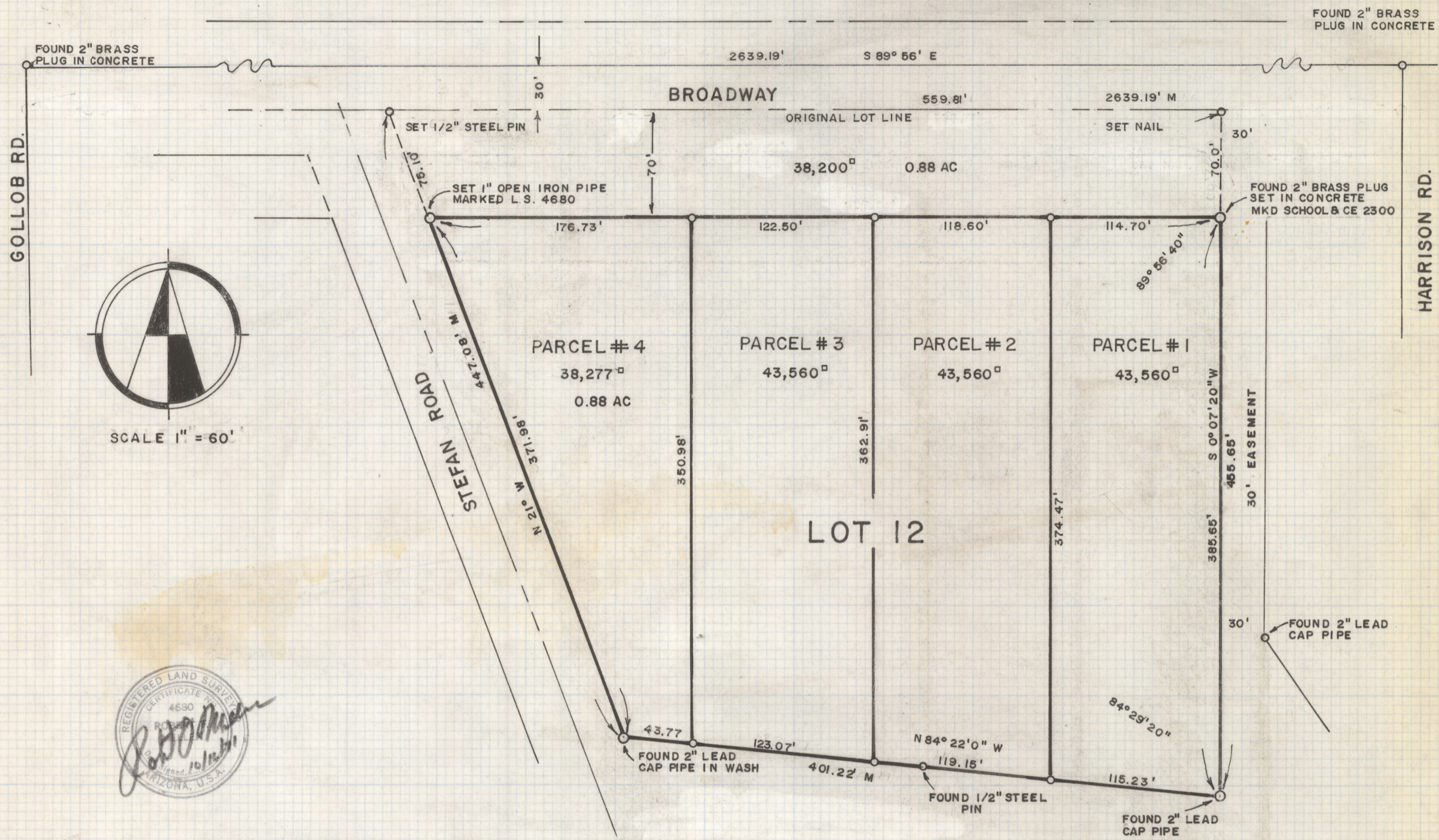


DISCLAIMER:

This unrecorded Record of Survey was donated to the City of Tucson. The City of Tucson provides this data for your personal use "as is." Additionally, the City of Tucson provides this information with the understanding that it is not guaranteed to be accurate, correct or complete and conclusions drawn from such information are the responsibility of the user.



RESULTS OF SURVEY
OF

LOT 12 OF HALCYON ACRES AS RECORDED
IN BOOK 6 OF MAPS AND PLATS AT PAGE 40
IN THE OFFICE OF THE PIMA COUNTY RECORDER
PIMA COUNTY, ARIZONA

NOTE

- (1) THE BEARING OF S 84° 35' WEST GIVEN FOR THE SOUTH LINE OF LOT 12 SHOULD HAVE BEEN N 84° 35' WEST IN THE OPINION OF THIS SURVEYOR
- (2) INDICATES 1/2" STEEL PIN SET, MARKED L.S. 4680

ROBERT F. MELLEN
REGISTERED LAND SURVEYOR
TUCSON, ARIZONA