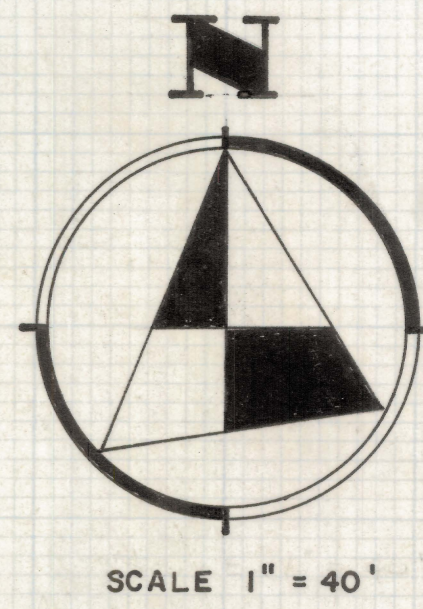
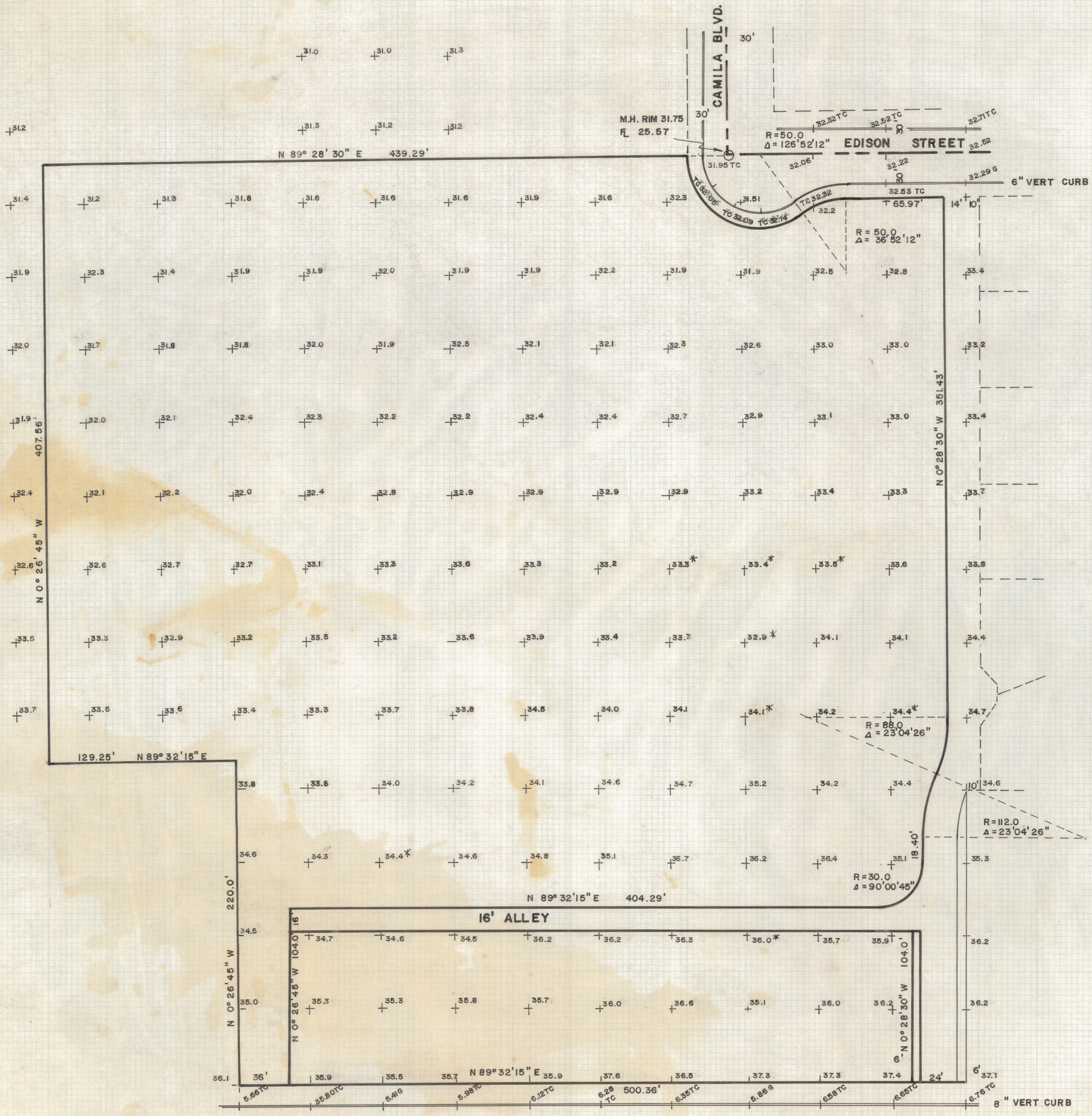


# **DISCLAIMER:**

**This unrecorded Record of Survey was donated to the City of Tucson. The City of Tucson provides this data for your personal use "as is." Additionally, the City of Tucson provides this information with the understanding that it is not guaranteed to be accurate, correct or complete and conclusions drawn from such information are the responsibility of the user.**





RESULTS OF  
TOPOGRAPHICAL SURVEY  
OF  
CAMILA ESTATES SUBDIVISION AS RECORDED  
IN BOOK 17 OF MAPS AND PLATS AT PAGE 71  
IN THE OFFICE OF THE PIMA COUNTY RECORDER  
PIMA COUNTY, ARIZONA

- NOTE**
- (1) THIS MAP DOES NOT REPRESENT A BOUNDARY SURVEY
  - (2) BEARING AND DISTANCES HAVE BEEN TAKEN FROM OTHER MAPS AND HAVE NOT BEEN CONFIRMED
  - (3) BENCH MARK NORTH RIM OF MANHOLE AT  $\odot$  OF HOWARD AVE. AND  $\odot$  OF SENECA STREET 2436.59 FROM CITY OF TUCSON PLAN NO. 518 PAGE 22
  - (4) TC = TOP OF CURB G = GUTTER
  - (5) \* INDICATES ELEVATIONS INTERPOLATED

ROBERT F. MELLEN  
REGISTERED LAND SURVEYOR  
TUCSON, ARIZONA