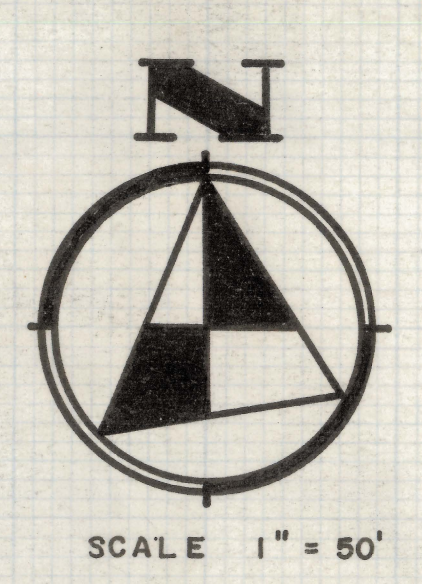
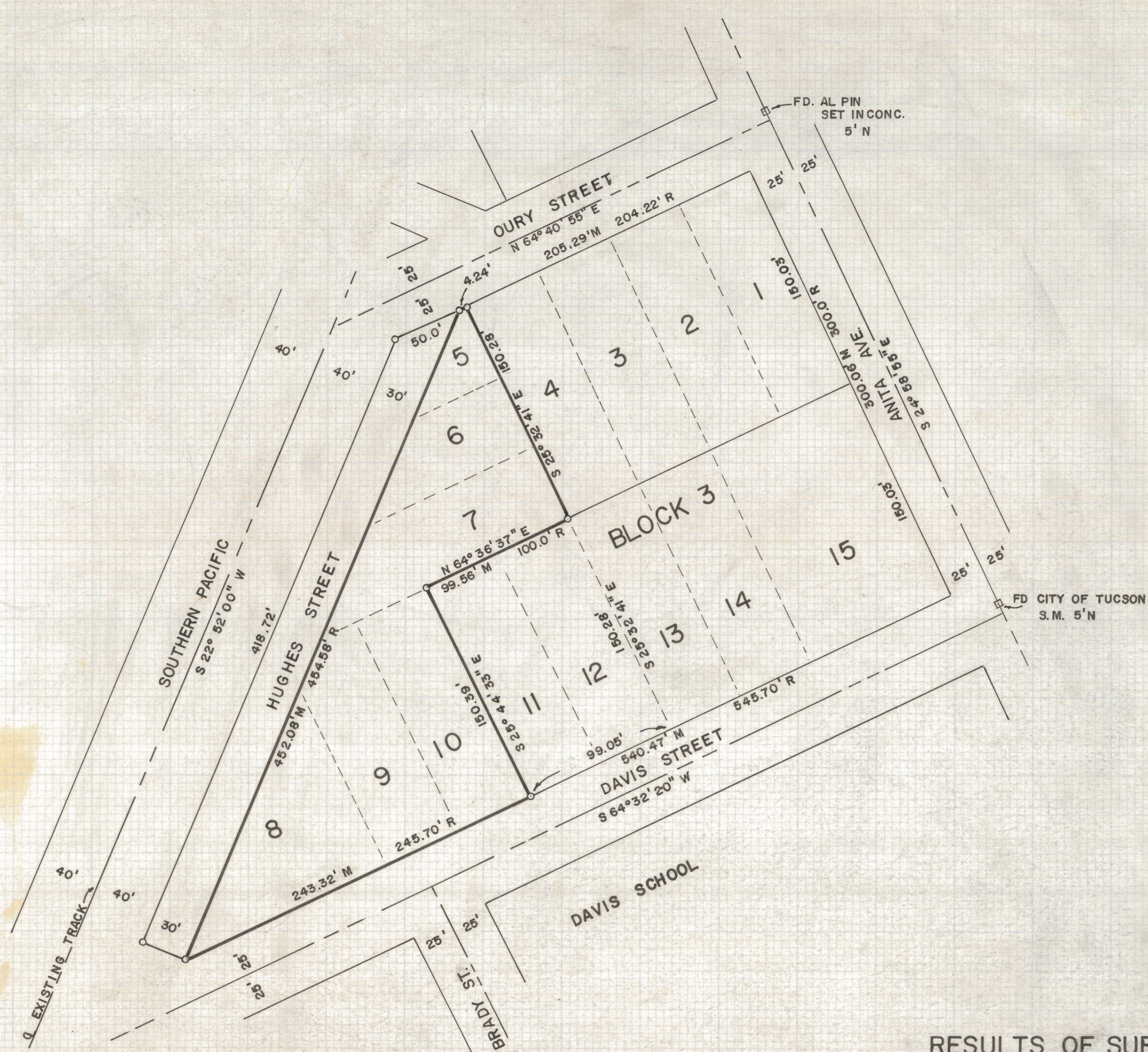


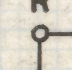
# **DISCLAIMER:**

**This unrecorded Record of Survey was donated to the City of Tucson. The City of Tucson provides this data for your personal use "as is." Additionally, the City of Tucson provides this information with the understanding that it is not guaranteed to be accurate, correct or complete and conclusions drawn from such information are the responsibility of the user.**



RESULTS OF SURVEY  
OF

LOTS 5, 6, 7, 8, 9, 10 OF BLOCK 3 OF AMENDED  
MAP OF MCKINLEY PARK SUBDIVISION AS RECORDED  
IN BOOK 3 OF MAPS AND PLATS AT PAGE 26 IN  
THE OFFICE OF THE PIMA COUNTY RECORDER,  
PIMA COUNTY, ARIZONA

- NOTES**
- (1) M = MEASURED DISTANCES
  - (2) R = RECORDED DISTANCES
  - (3)  INDICATES 1/2" STEEL PIN SET

ROBERT F. MELLEN  
REGISTERED LAND SURVEYOR  
TUCSON, ARIZONA