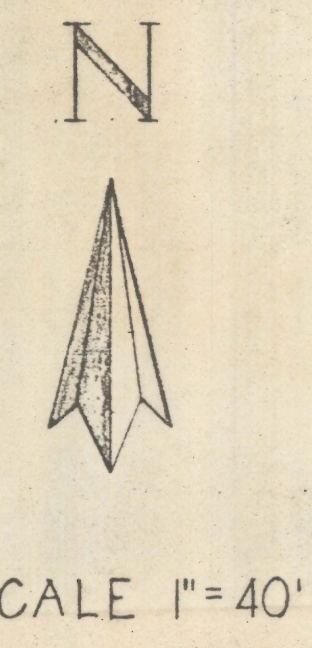
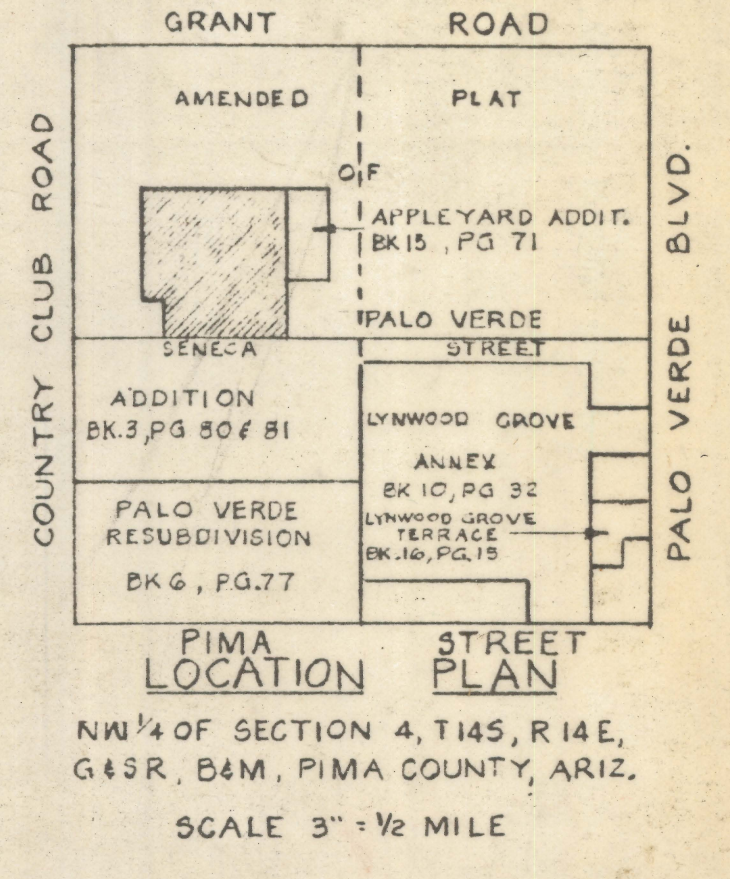
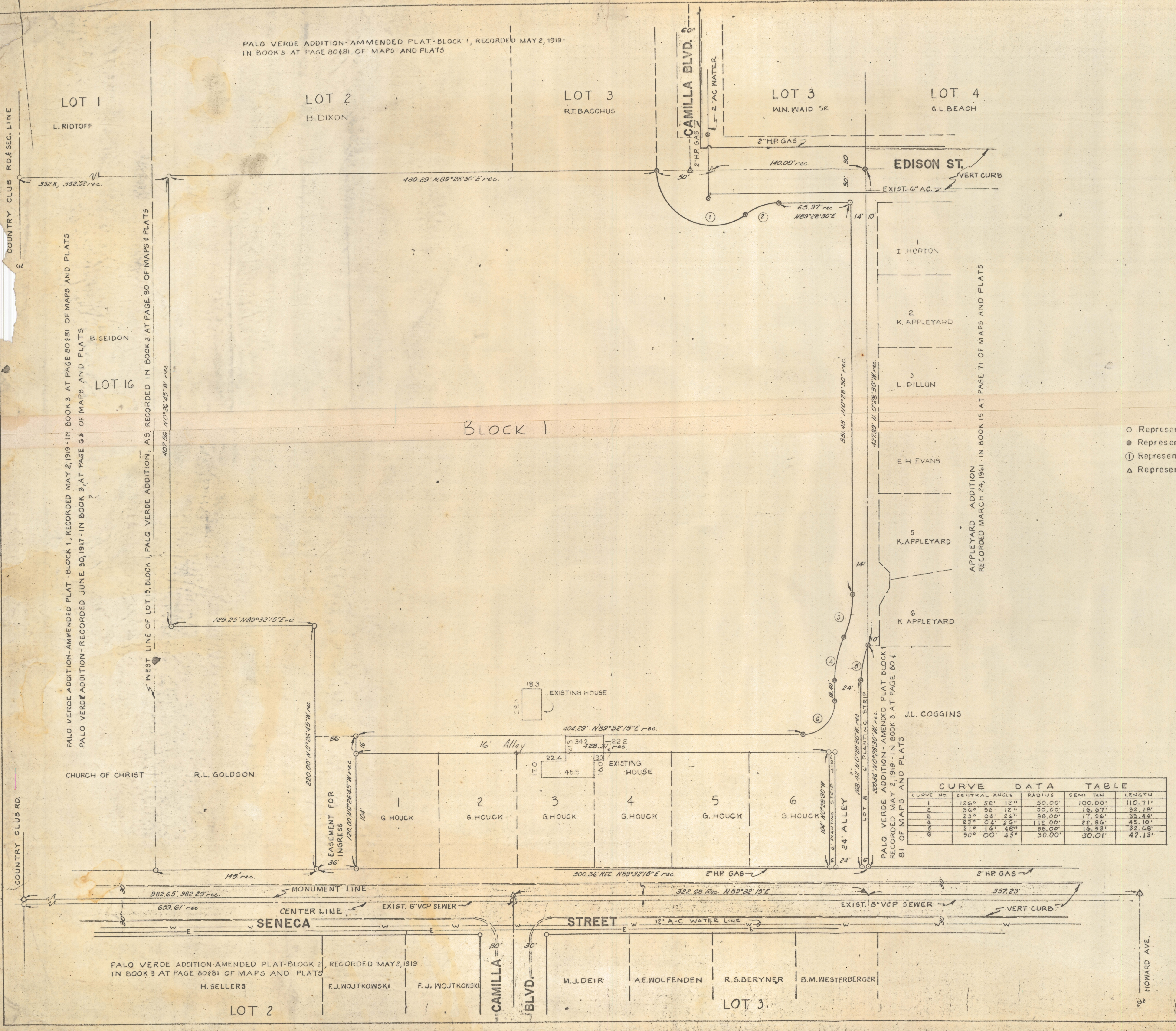


DISCLAIMER:

This unrecorded Record of Survey was donated to the City of Tucson. The City of Tucson provides this data for your personal use "as is." Additionally, the City of Tucson provides this information with the understanding that it is not guaranteed to be accurate, correct or complete and conclusions drawn from such information are the responsibility of the user.

PALO VERDE ADDITION-AMENDED PLAT-BLOCK 1, RECORDED MAY 2, 1919-
IN BOOK 3 AT PAGE 80&81 OF MAPS AND PLATS



- Represents 5/8" Iron pin
- Represents 5/8" Aluminum capped pin
- ① Represents curve in curve in curve data table
- △ Represents standard survey monument

CERTIFICATION OF SURVEY

TO ALL PARTIES INTERESTED IN TITLE TO PREMISES SURVEYED, THIS IS TO CERTIFY THAT THE SURVEY SHOWN HEREON WAS MADE UNDER MY DIRECTION AS PER RECORD DESCRIPTION AND IS CORRECT, THERE ARE NO ENCROACHMENTS ACROSS PROPERTY LINES UNLESS SHOWN HEREON.

Gene E. Anderson Oct 1, 1970
 GENE E. ANDERSON
 REGISTERED CIVIL ENGINEER & LAND SURVEYOR

LEGAL DESCRIPTION

CAMILLA ESTATES, BLOCK 1 & LOTS 1 THRU 8 AS RECORDED IN MAPS AND PLATS IN BK. 17 AT PAGE 71 THEREOF, IN THE OFFICE OF THE COUNTY RECORDER, PIMA COUNTY, ARIZONA.

CURVE NO.	CENTRAL ANGLE	RADIUS	SEMI TAN	LENGTH
1	126° 58' 12"	50.00'	100.00'	110.71'
2	136° 56' 12"	30.00'	16.67'	32.18'
3	23° 04' 25"	85.00'	17.96'	35.44'
4	23° 04' 26"	112.00'	22.80'	45.10'
5	27° 16' 48"	85.00'	16.53'	32.68'
6	90° 00' 45"	30.00'	30.01'	47.13'

MAP OF SURVEY
CAMILLA ESTATES
GENE E. ANDERSON
 CONSULTING ENGINEERS

DESIGN: GEA	DATE: OCT 1970
DRAWN: GEA	JOB NO 2157
SCALE: 1" = 40'	SHEET 1 OF 1