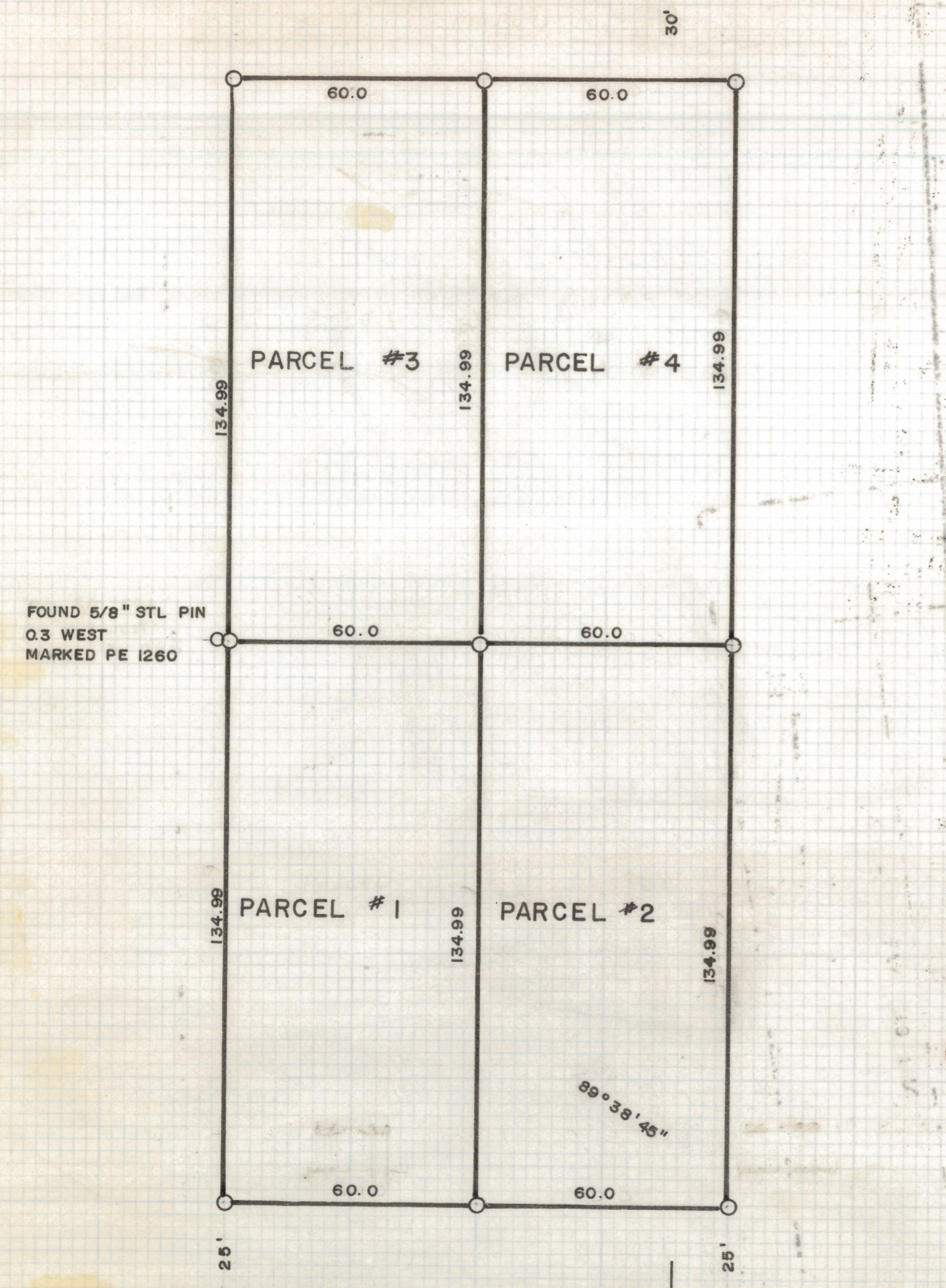
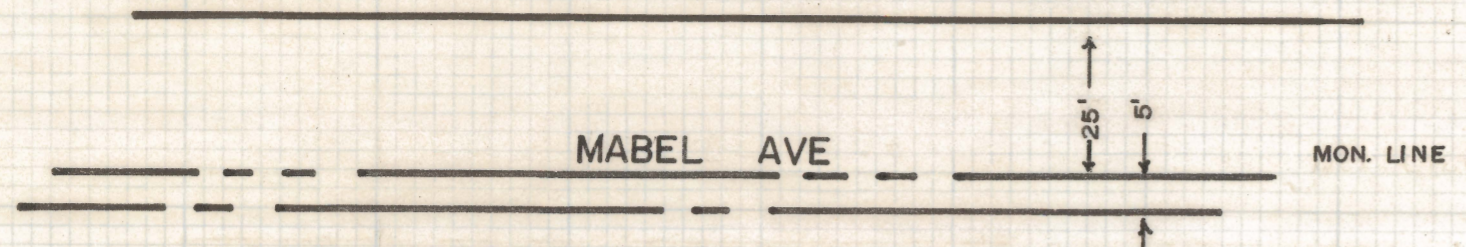
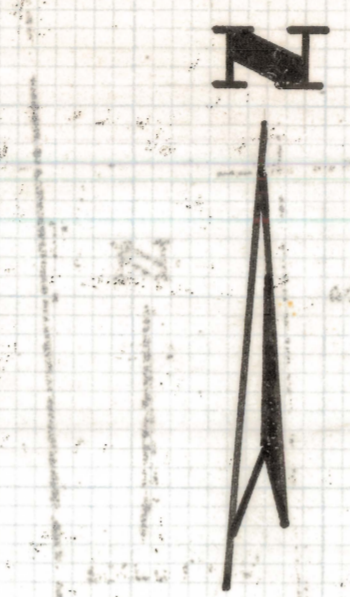


# **DISCLAIMER:**

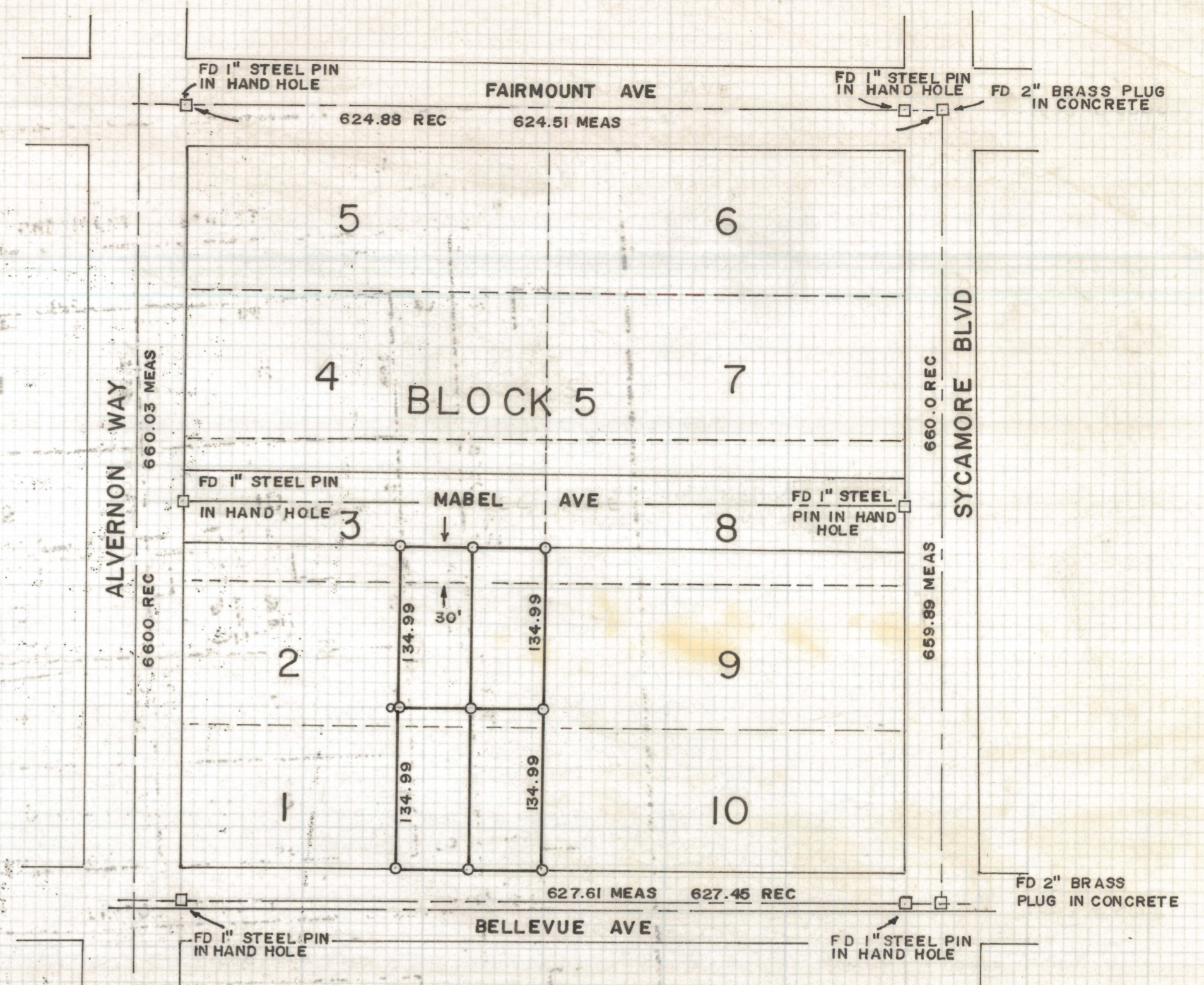
**This unrecorded Record of Survey was donated to the City of Tucson. The City of Tucson provides this data for your personal use "as is." Additionally, the City of Tucson provides this information with the understanding that it is not guaranteed to be accurate, correct or complete and conclusions drawn from such information are the responsibility of the user.**



SCALE 1" = 30'



INDICATES 1/2" STEEL  
PIN MARKED L.S. 4680



SCALE 1" = 100'

RESULTS OF SURVEY  
OF

THE EAST 120.0 FEET OF LOTS 1 & 2 AND THE EAST 120.0 FEET  
OF THE SOUTH 30.0 FEET OF LOT 3, BLOCK 5, SPEEDWAY ADDITION  
NO. 1 AS RECORDED IN BOOK 3 AT PAGE 95 OF MAPS AND PLATS  
IN THE OFFICE OF THE PIMA COUNTY RECORDER, PIMA COUNTY,  
ARIZONA

ROBERT F. MELLEN  
REGISTERED LAND SURVEYOR  
TUCSON, ARIZONA  
JUNE 1971