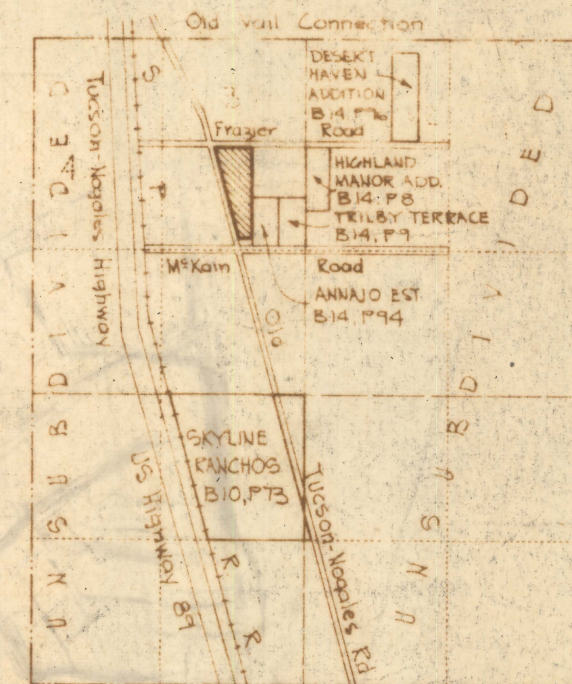
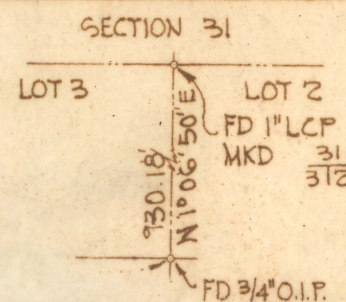


DISCLAIMER:

This unrecorded Record of Survey was donated to the City of Tucson. The City of Tucson provides this data for your personal use "as is." Additionally, the City of Tucson provides this information with the understanding that it is not guaranteed to be accurate, correct or complete and conclusions drawn from such information are the responsibility of the user.

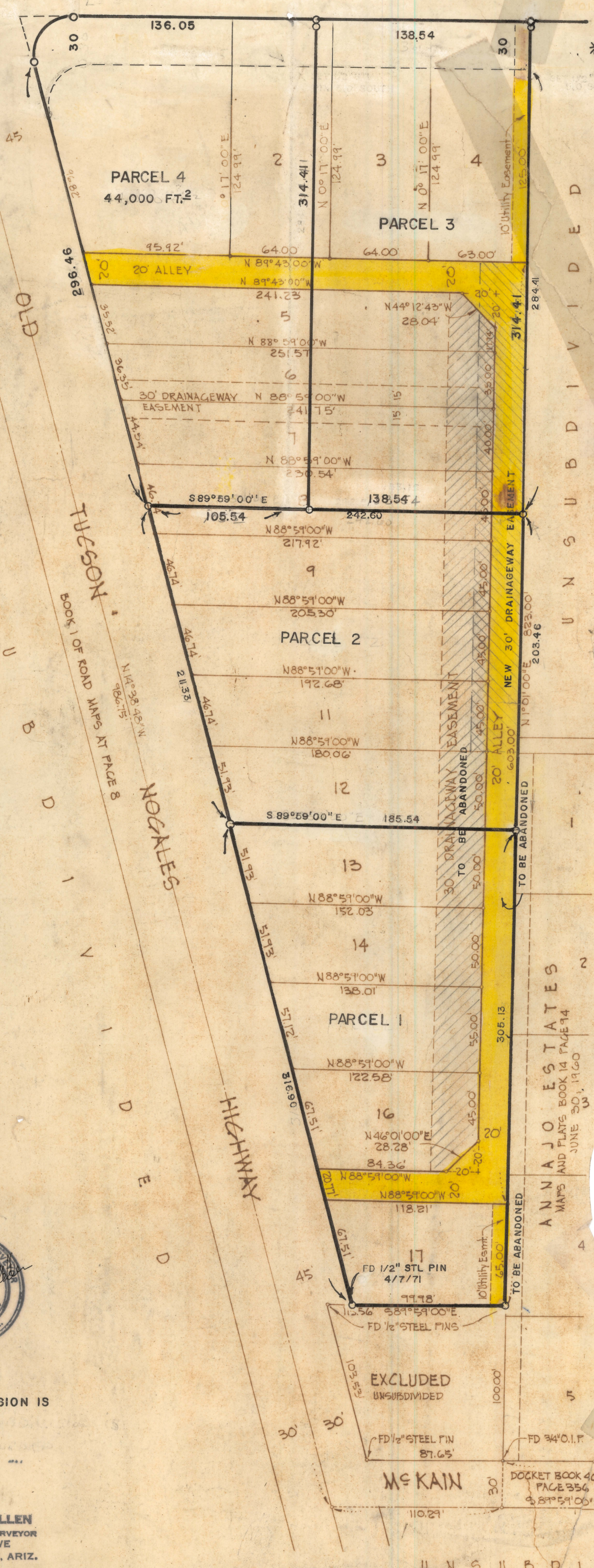
Δ = 104° 55' 48"
R = 25.0
T = 32.54
L = 45.78

FRAIZER ROAD



LOCATION PLAN

SECTION 6, TWP 16S, RGE 14E,
2° S.R.B. & M., PIMA COUNTY, ARIZONA
SCALE: 3\"/>



* EXTRA 30' DUE TO ERROR IN PLAT
THIS ERROR CAN NOT BE CORRECTED
EXCEPT BY ACTION OF THE BOARD OF
SUPERVISORS

DEDICATION

WE, THE UNDERSIGNED, HEREBY WARRANT THAT WE ARE ALL AND ONLY PARTIES HAVING ANY RECORD TITLE INTEREST IN THE LAND SHOWN ON THIS PLAT, AND WE CONSENT TO THE SUBDIVISION OF SAID LAND IN THE MANNER SHOWN ON THIS PLAT. WE HEREBY DEDICATE TO THE USE OF THE PUBLIC FOREVER ALL RIGHTS OF WAYS AS SHOWN HEREON, INCLUDING ALL STREETS, ALLEYS AND EASEMENTS, TOGETHER WITH AN ADDITIONAL FIVE (5) FOOT AERIAL OR OVERHEAD EASEMENT EACH SIDE OF ALL (ALLEYS) AND UTILITY EASEMENTS FOR OVERHEAD WIRES, CROSSARMS, ETC., ON UTILITY POLES, UTILITY EASEMENTS AS SHOWN HEREON ARE DEDICATED FOR THE PURPOSE OF INSTALLATION AND MAINTENANCE OF UTILITIES AND SEWERS.

D.M. HELTON & OFFIE M. HELTON Husband & Wife, Owners
State of Arizona
County of Pima

ON THIS THE 16 DAY OF January, 1964 BEFORE ME, Janet Jackson, THE UNDERSIGNED OFFICER, PERSONALLY APPEARED D.M. HELTON AND OFFIE M. HELTON, HUSBAND AND WIFE, KNOWN TO ME (OR SATISFACTORILY PROVEN) TO BE THE PERSONS WHOSE NAMES AS SOLE OWNERS SUBSCRIBED TO THE WITHIN INSTRUMENT AND ACKNOWLEDGED THAT AS SOLE OWNERS THEY EXECUTED THE SAME FOR THE PURPOSES THEREIN CONTAINED.

IN WITNESS WHEREOF I HEREUNTO SET MY HAND AND OFFICIAL SEAL

Janet Jackson (County)
NOTARY PUBLIC

MY COMMISSION EXPIRES: April 16, 1967

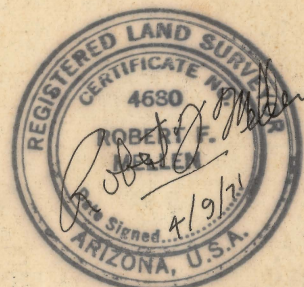
GENERAL NOTES

- INDICATES A STANDARD SURVEY MONUMENT, A 2" BRASS PLUG SET IN A 12" X 12" X 18" SOLID BLOCK OF CONCRETE.
- INDICATES, SET, A 1/2" STEEL PIN UNLESS OTHERWISE NOTED
- NATURAL DRAINAGE SHALL NOT BE ALTERED, DISTURBED OR OBSTRUCTED WITHOUT APPROVAL OF THE PIMA COUNTY BOARD OF SUPERVISORS.
- BEARINGS SHOWN ON THIS PLAT ARE BASED ON THE WEST LINE OF ANNAJO ESTATES AS RECORDED IN THE OFFICE OF THE PIMA COUNTY RECORDER IN BOOK 14 OF MAPS AND PLATS AT PAGE 94 THEREOF, SAID BEARING BEING N 1° 01' 00" E.
- INDICATES A 10' UTILITY EASEMENT.
- INDICATES TYPICAL 20' ALLEY CUT-OFF LEGS

PROPOSED ALLEY & EASEMENT ABANDONMENT IN LOTS 1 THRU 17

HELTON ADDITION

BEING A SUBDIVISION OF A PORTION OF LOT 3 OF SECTION 6 TWP. 16S., RGE 14E., 2° S.R.B. & M., PIMA COUNTY, ARIZONA



NOTE
THIS RESUBDIVISION IS NOT RECORDED

ROBERT F. MELLEN
REGISTERED LAND SURVEYOR
1250 W. MOHAVE
MA 2-5565 TUCSON, ARIZ.

C12-62-64

71-15

JAN. 15, 1964
JOB N° 1025 pml

Z-2020-081

BOOK PAGE