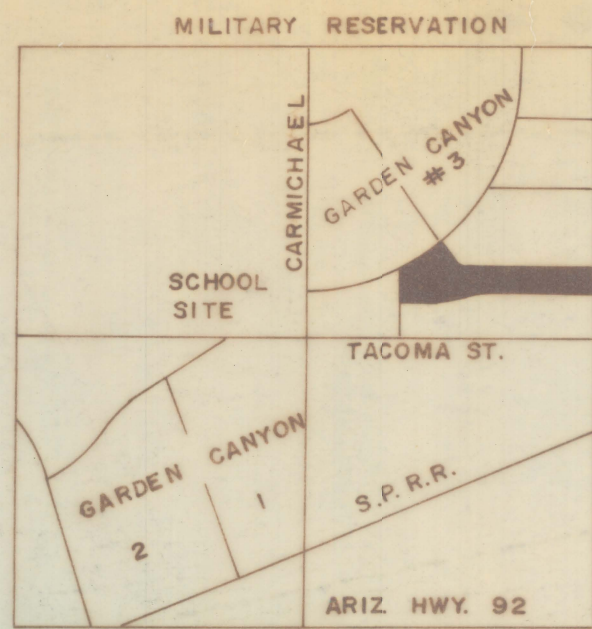


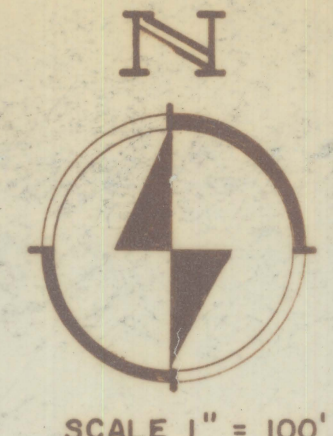
# **DISCLAIMER:**

**This unrecorded Record of Survey was donated to the City of Tucson. The City of Tucson provides this data for your personal use "as is." Additionally, the City of Tucson provides this information with the understanding that it is not guaranteed to be accurate, correct or complete and conclusions drawn from such information are the responsibility of the user.**

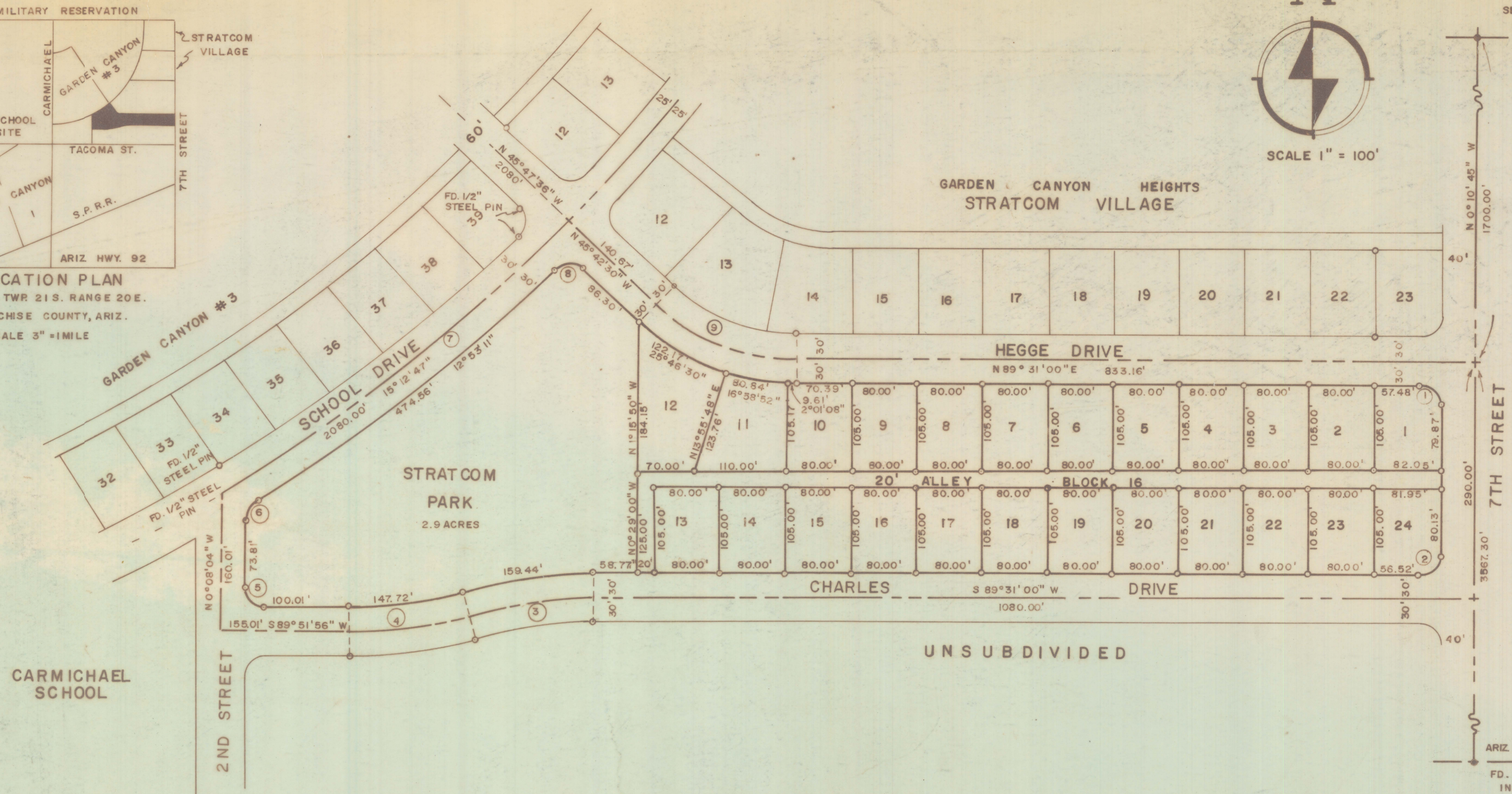




LOCATION PLAN  
SEC. 34 TWP. 21S. RANGE 20E.  
COCHISE COUNTY, ARIZ.  
SCALE 3" = 1 MILE



SECTION CORNER  
RESET FROM  
GARDEN CANYON  
HEIGHTS #3



CARMICHAEL  
SCHOOL

GARDEN CANYON HEIGHTS  
"STRATCOM VILLAGE"  
LOTS 1 THRU 24, BLOCK 16  
BEING A SUBDIVISION OF PART OF  
THE NORTHEAST QUARTER OF SECTION  
34, TOWNSHIP 21S. RANGE 20E, GILA  
AND SALT RIVER BASE AND MERIDIAN,  
COCHISE COUNTY, ARIZONA

**DEDICATION**

WE THE UNDERSIGNED, HEREBY WARRANT THAT WE ARE ALL AND THE ONLY PARTY HAVING ANY RECORD TITLE INTEREST IN THE LAND SHOWN ON THIS PLAT, AND WE CONSENT TO THE SUBDIVISION OF SAID LAND IN THE MANNER SHOWN ON THIS PLAT. WE HEREBY DEDICATE TO THE USE OF THE PUBLIC, ALL RIGHT-OF-WAYS SHOWN HEREON, INCLUDING ALL STREETS, ALLEYS, DRAINAGEWAYS AND EASEMENTS, TOGETHER WITH AN ADDITIONAL FIVE (5) FEET AERIAL OR OVERHEAD EASEMENT ON EACH SIDE OF ALL ALLEYS AND UTILITY EASEMENTS FOR OVERHEAD WIRES, CROSSARMS, ETC. ON ALL UTILITY POLES. UTILITY EASEMENTS SHOWN HEREON ARE DEDICATED FOR THE PURPOSE OF INSTALLATION AND MAINTENANCE OF UTILITIES AND SEWERS.

HUACHUCA INVESTMENT CO., INC.  
J.M. CARROLL, VICE PRESIDENT

STATE OF ARIZONA  
COUNTY OF COCHISE SS  
THE FOREGOING INSTRUMENT WAS ACKNOWLEDGED BEFORE ME ON THIS \_\_\_\_\_ DAY  
OF \_\_\_\_\_, 1973 BY:

NOTARY PUBLIC

MY COMMISSION EXPIRES \_\_\_\_\_

**APPROVALS**

I, \_\_\_\_\_, CLERK OF THE CITY OF SIERRA VISTA, ARIZONA,  
HEREBY CERTIFY THAT THIS PLAT WAS APPROVED BY THE MAYOR AND COUNCIL OF THE CITY  
OF SIERRA VISTA ON THIS \_\_\_\_\_ DAY OF \_\_\_\_\_

CLERK OF THE CITY OF SIERRA VISTA \_\_\_\_\_ DATE \_\_\_\_\_

COUNTY RECORDER

STATE OF ARIZONA  
COUNTY OF COCHISE SS  
THIS PLAT WAS FILED FOR RECORD AT THE REQUEST OF \_\_\_\_\_ ON  
THIS \_\_\_\_\_ DAY OF \_\_\_\_\_ AT \_\_\_\_\_ M. IN BOOK \_\_\_\_\_ OF MAPS AND PLATS AT PAGE  
THEREOF.

COUNTY RECORDER \_\_\_\_\_ BY: \_\_\_\_\_ DEPUTY

**CERTIFICATION OF SURVEY**

THIS IS TO CERTIFY THAT ALL CORNERS SHOWN ON THIS PLAT HAVE BEEN SET.

*Robert F. Mellen*  
ROBERT F. MELLEN, RLS 4680

5/5/73  
DATE



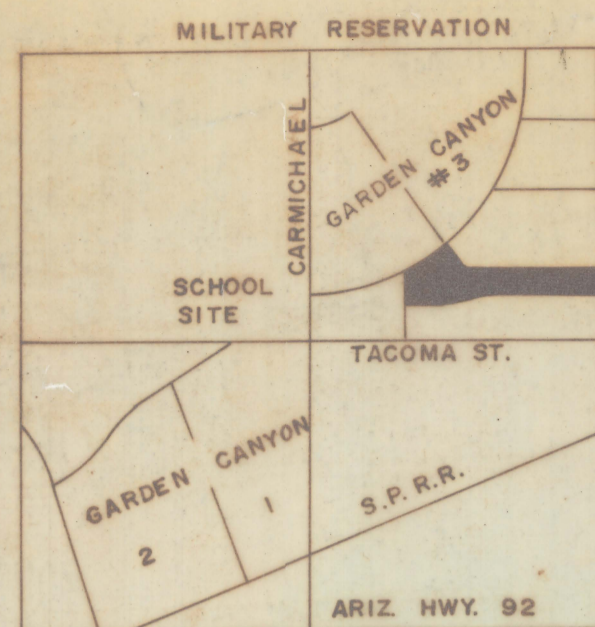
Z-2020-083-001  
71-36

CURVE DATA				
NO.	CENTRAL ANGLE	RADIUS	TAN	L.
1	90°18'15"	25.00	25.13	39.40
2	89°41'45"	25.00	24.87	39.14
3	14°30'00"	600.00	76.33	151.84
4	14°50'56"	600.00	78.19	155.50
5	90°00'00"	25.00	25.00	39.27
6	58°42'21"	25.00	14.06	25.62
7	15°12'47"	2080.00	277.77	552.28
8	88°36'24"	25.00	24.40	38.66
9	44°46'30"	242.77	100.00	189.72

**NOTES**

- (1) INDICATES 5/8" STEEL PIN MKD. L.S. 4680 UNLESS NOTED
- (2) S CURVE NUMBER - SEE CURVE DATA





LOCATION PLAN  
SEC. 34 TWP. 21 S. RANGE 20 E.  
COCHISE COUNTY, ARIZ.  
SCALE 3" = 1 MILE



SCALE 1" = 100'

SECTION CORNER  
RESET FROM  
GARDEN CANYON  
HEIGHTS # 3

CARMICHAEL  
SCHOOL

2ND STREET

TRACT  
"A"  
2.9 ACRES

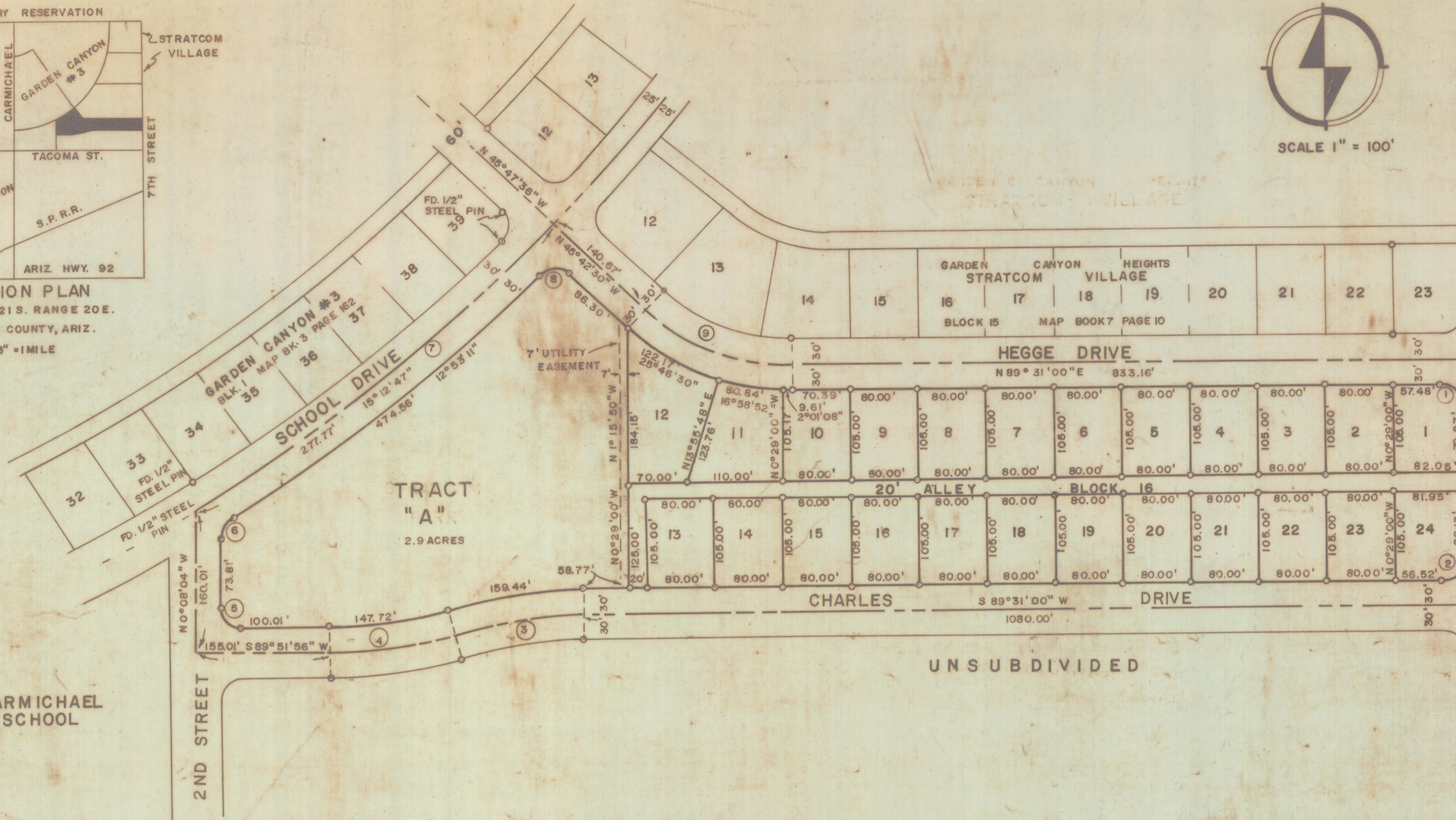
GARDEN CANYON HEIGHTS  
"STRATCOM VILLAGE"

LOTS 1 THRU 24, BLOCK 16  
BEING A SUBDIVISION OF PART OF  
THE NORTHEAST QUARTER OF SECTION  
34, TOWNSHIP 21 S. RANGE 20 E., 61A  
AND SALT RIVER BASE AND MERIDIAN,  
COCHISE COUNTY, ARIZONA

CURVE DATA				
NO.	CENTRAL ANGLE	RADIUS	TAN	L.
1	90°18'15"	25.00	25.13	39.40
2	89°41'45"	25.00	24.87	39.14
3	14°30'00"	600.00	76.33	151.84
4	14°50'56"	600.00	78.19	155.50
5	90°00'00"	25.00	25.00	39.27
6	58°42'21"	25.00	14.06	25.62
7	15°12'47"	2080.00	277.77	552.28
8	88°36'24"	25.00	24.40	38.66
9	44°46'30"	242.77	100.00	189.72

NOTES

- (1) INDICATES 5/8" STEEL PIN MKD. L.S. 4680 UNLESS NOTED
- (2) CURVE NUMBER - SEE CURVE DATA



DEDICATION

WE THE UNDERSIGNED, HEREBY WARRANT THAT WE ARE ALL AND THE ONLY PARTY HAVING ANY RECORD TITLE INTEREST IN THE LAND SHOWN ON THIS PLAT, AND WE CONSENT TO THE SUBDIVISION OF SAID LAND IN THE MANNER SHOWN ON THIS PLAT. WE HEREBY DEDICATE TO THE USE OF THE PUBLIC, ALL RIGHT-OF-WAYS SHOWN HEREON, INCLUDING ALL STREETS, ALLEYS, DRAINAGEWAYS AND EASEMENTS, TOGETHER WITH AN ADDITIONAL FIVE (5) FEET AERIAL OR OVERHEAD EASEMENT ON EACH SIDE OF ALL ALLEYS AND UTILITY EASEMENTS FOR OVERHEAD WIRES, CROSSARMS, ETC. ON ALL UTILITY POLES. UTILITY EASEMENTS SHOWN HEREON ARE DEDICATED FOR THE PURPOSE OF INSTALLATION AND MAINTENANCE OF UTILITIES AND SEWERS.

WITNESS AS TO SIGNATURE

*Ray Homan*  
*Edward J. Carroll*

*J. M. Carroll*  
HUACHUCA INVESTMENT CO., INC.  
J. M. CARROLL, VICE PRESIDENT

STATE OF ARIZONA SS  
COUNTY OF COCHISE

THE FOREGOING INSTRUMENT WAS ACKNOWLEDGED BEFORE ME ON THIS 14<sup>th</sup> DAY OF May, 1973 BY J. M. CARROLL AS VICE PRESIDENT OF HUACHUCA INVESTMENT CO., INC.

*Mary Margaret Carrillo*  
NOTARY PUBLIC

MY COMMISSION EXPIRES June 26, 1976

APPROVALS

I, ESTHER J. WINN, CLERK OF THE CITY OF SIERRA VISTA, ARIZONA, HEREBY CERTIFY THAT THIS PLAT WAS APPROVED BY THE MAYOR AND COUNCIL OF THE CITY OF SIERRA VISTA ON THIS 24<sup>th</sup> DAY OF MAY 1973

*Esther J. Winn*  
CLERK OF THE CITY OF SIERRA VISTA

MAY 25th 1973  
DATE

COUNTY

RECORDER

STATE OF ARIZONA SS  
COUNTY OF COCHISE

THIS PLAT WAS FILED FOR RECORD AT THE REQUEST OF \_\_\_\_\_ ON THIS \_\_\_\_\_ DAY OF \_\_\_\_\_ AT \_\_\_\_\_ M. IN BOOK \_\_\_\_\_ OF MAPS AND PLATS AT PAGE \_\_\_\_\_ THEREOF.

COUNTY RECORDER BY: \_\_\_\_\_ DEPUTY

CERTIFICATION OF SURVEY

THIS IS TO CERTIFY THAT ALL CORNERS SHOWN ON THIS PLAT HAVE BEEN SET.

*Robert F. Mellen*  
ROBERT F. MELLEN, RLS 4680

5/5/73  
DATE



Z-2020-083-002