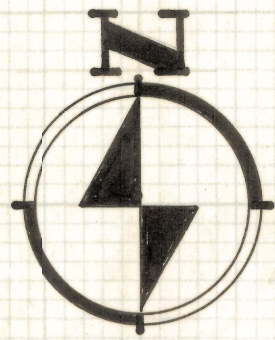
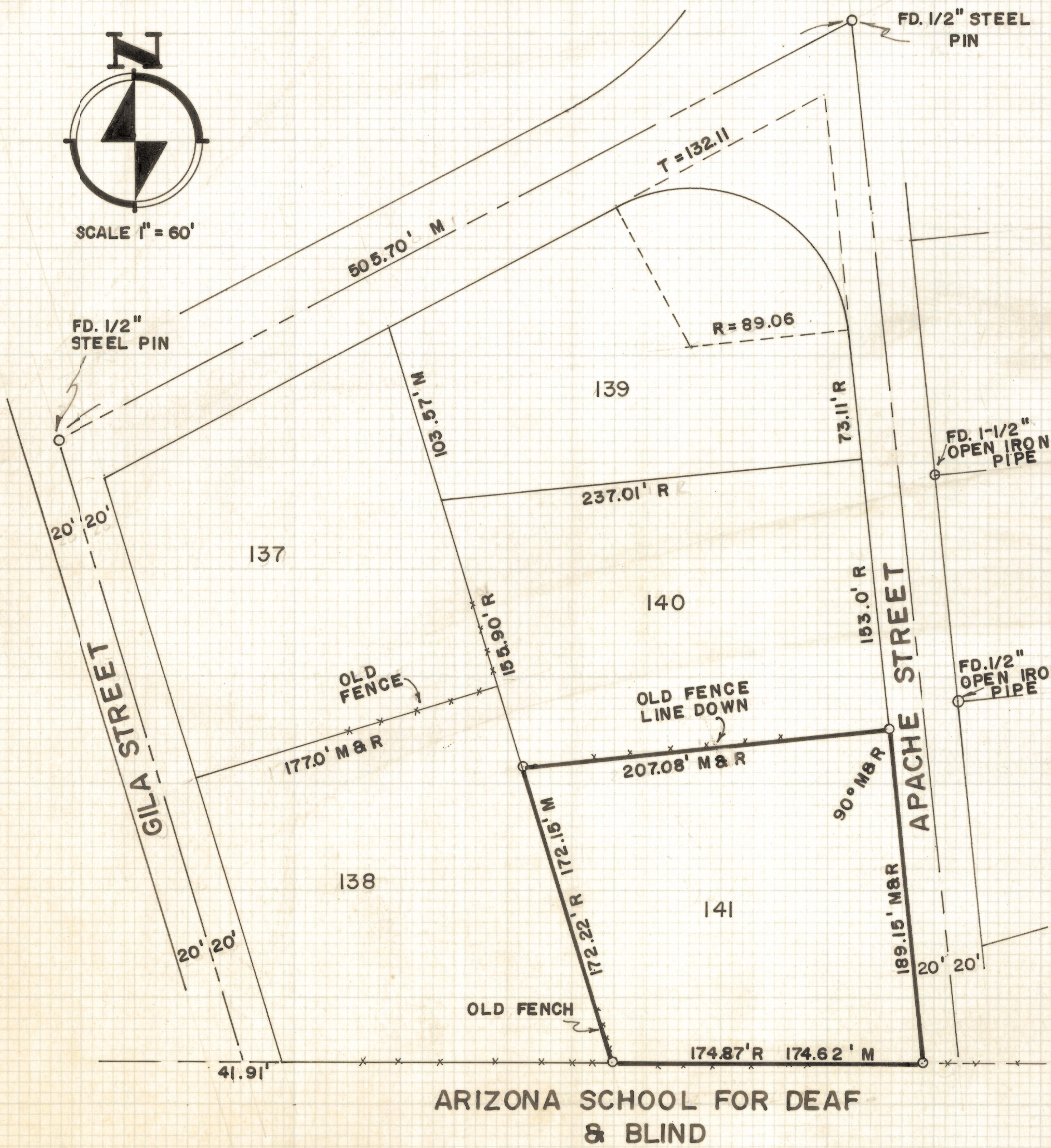
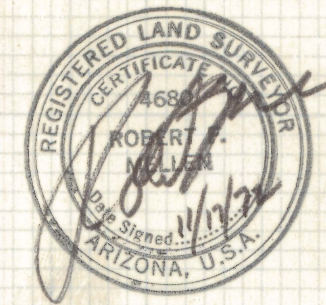


DISCLAIMER:

This unrecorded Record of Survey was donated to the City of Tucson. The City of Tucson provides this data for your personal use "as is." Additionally, the City of Tucson provides this information with the understanding that it is not guaranteed to be accurate, correct or complete and conclusions drawn from such information are the responsibility of the user.



SCALE 1" = 60'



RESULTS OF SURVEY OF

LOT 141, EL RIO ACRES SUBDIVISION AS RECORDED IN BOOK 6 OF MAPS AND PLATS AT PAGE II IN THE OFFICE OF THE PIMA COUNTY RECORDER, PIMA COUNTY, ARIZONA

NOTES

- (1) INDICATES 5/8" STEEL PIN MARKED L.S. 4680 SET IN CONCRETE UNLESS OTHERWISE NOTED
- (2) M = MEASURED DIST.
- (3) R = MAP RECORD

ROBERT F. MELLEN
REGISTERED LAND SURVEYOR
TUCSON, ARIZONA

JOB # 72-145

IM

ARIZONA SCHOOL FOR DEAF & BLIND