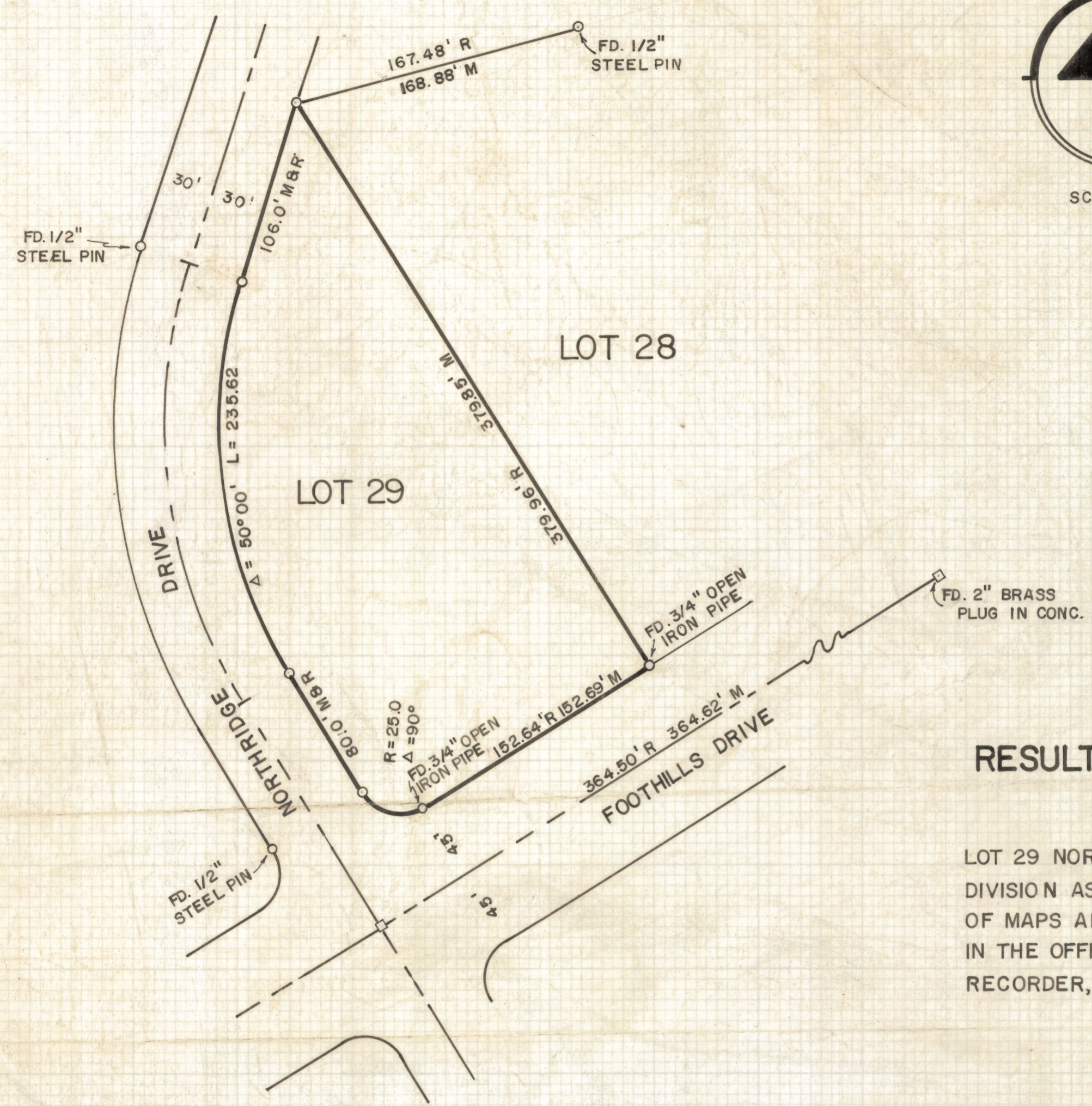
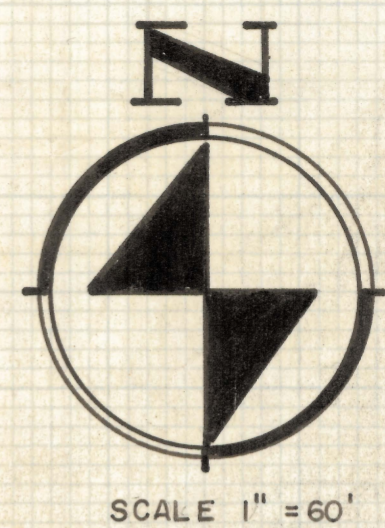


DISCLAIMER:

This unrecorded Record of Survey was donated to the City of Tucson. The City of Tucson provides this data for your personal use "as is." Additionally, the City of Tucson provides this information with the understanding that it is not guaranteed to be accurate, correct or complete and conclusions drawn from such information are the responsibility of the user.



**RESULTS OF SURVEY
OF**

LOT 29 NORTHRIDGE ESTATES SUB-DIVISION AS RECORDED IN BOOK 14 OF MAPS AND PLATS AT PAGE 14 IN THE OFFICE OF THE PIMA COUNTY RECORDER, PIMA COUNTY, ARIZONA

NOTES

- INDICATES 5/8" AL. CAP PIN SET MARKED L.S. 4680 UNLESS NOTED
- M = MEASURED DISTANCE
- R = MAP RECORD



ROBERT F. MELLEN
REGISTERED LAND SURVEYOR
TUCSON, ARIZONA

Z-2020-086

JOB # 72-159