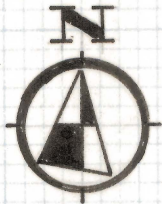
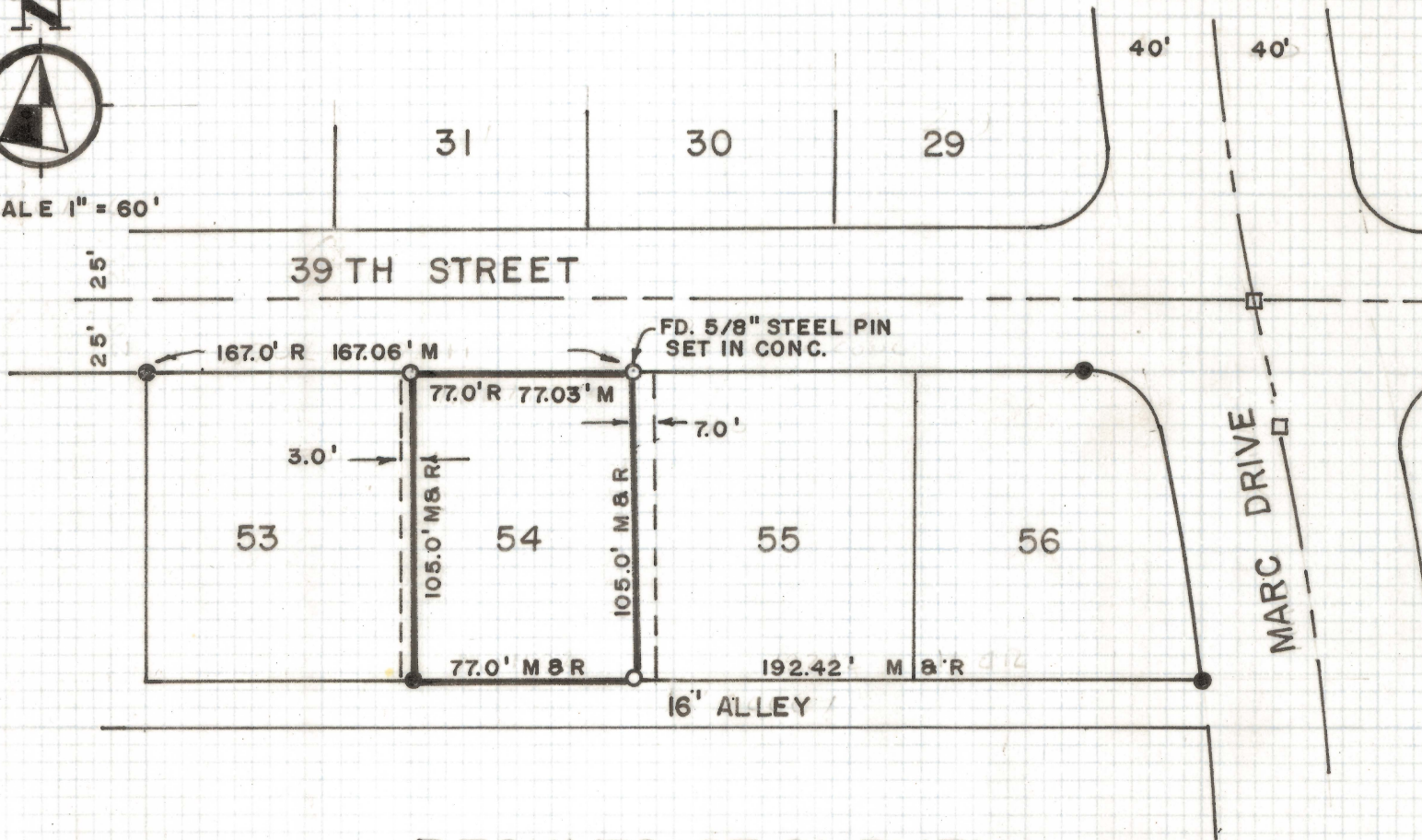


# **DISCLAIMER:**

**This unrecorded Record of Survey was donated to the City of Tucson. The City of Tucson provides this data for your personal use "as is." Additionally, the City of Tucson provides this information with the understanding that it is not guaranteed to be accurate, correct or complete and conclusions drawn from such information are the responsibility of the user.**



SCALE 1" = 60'



# RESULTS OF SURVEY OF

LOT 54 EXCEPT THE WEST 30 FEET AND EXCEPT THE EAST 7.0 FEET THEREOF IN RINCON VISTA SUBDIVISION AS RECORDED IN BOOK 19 AT PAGE 31 OF MAPS AND PLATS IN THE OFFICE OF THE THE PIMA COUNTY RECORDER, PIMA COUNTY, ARIZONA

## NOTES

- M - MEASURED
- R - RECORD
- ⊠ INDICATES STD SURVEY MON. FOUND
- ORIGINAL LOT LINE
- INDICATES 5/8" AL CAP PIN MKD L.S. 4785 FOUND
- INDICATES 1/2" STEEL PIN MKD L.S. 4680 SET



### Z-2020-088

ROBERT F. MELLEN  
REGISTERED LAND SURVEYOR  
TUCSON, ARIZONA

JOB # 72-94

IM