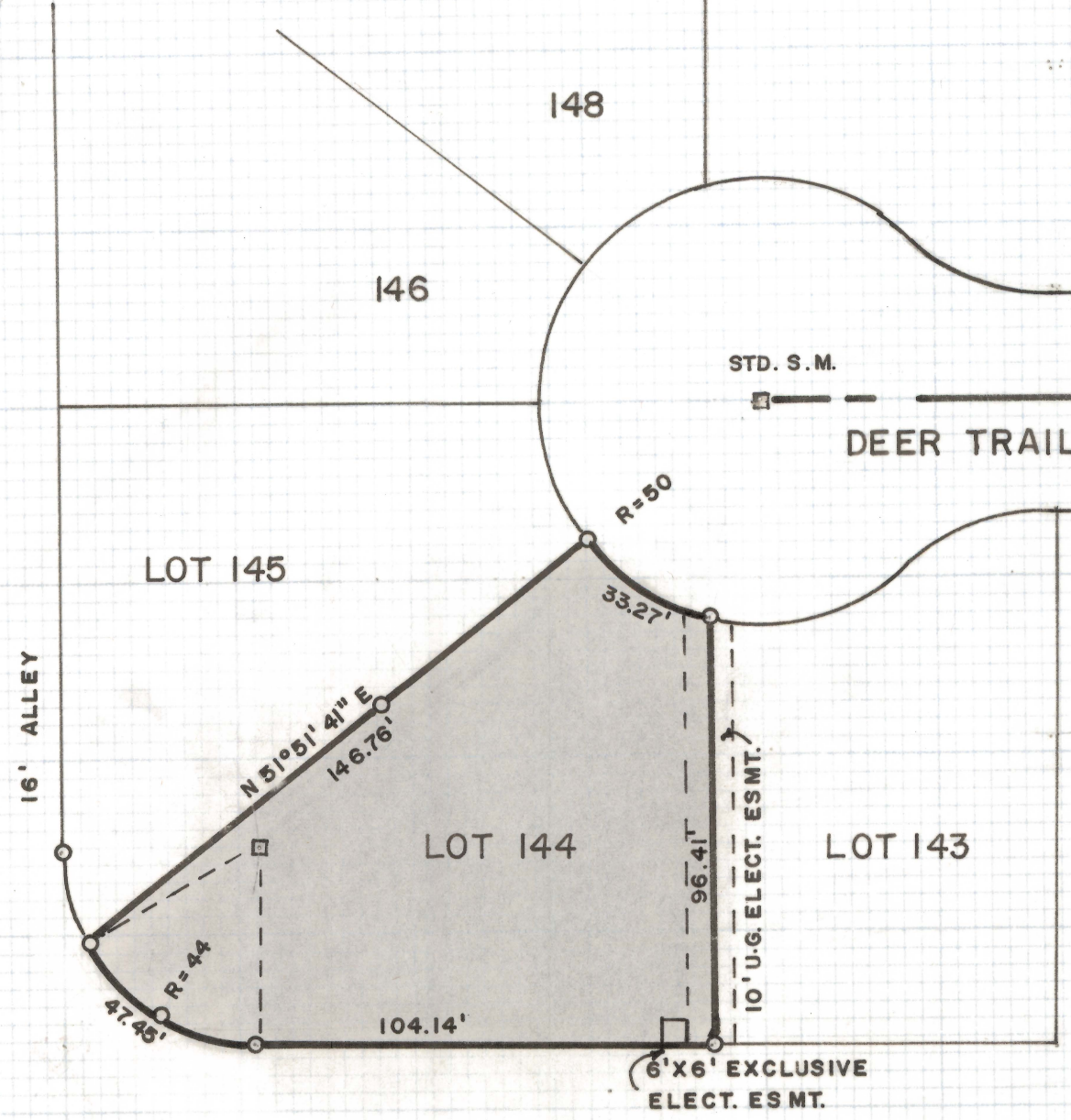


# **DISCLAIMER:**

**This unrecorded Record of Survey was donated to the City of Tucson. The City of Tucson provides this data for your personal use "as is." Additionally, the City of Tucson provides this information with the understanding that it is not guaranteed to be accurate, correct or complete and conclusions drawn from such information are the responsibility of the user.**



SCALE 1" = 40'



# RESULTS OF SURVEY OF

LOT 144 OF BRAEWOOD TERRACE AS  
RECORDED IN BOOK 21 AT PAGE 79 OF  
MAPS AND PLATS IN THE OFFICE OF  
THE PIMA COUNTY RECORDER, PIMA  
COUNTY, ARIZONA



ROBERT F. MELLEN  
REGISTERED LAND SURVEYOR  
TUCSON, ARIZONA

INDICATES 1/2" STEEL PIN SET  
MARKED L.S. 4680

JOB # 72-100

IM

## Z-2020-091