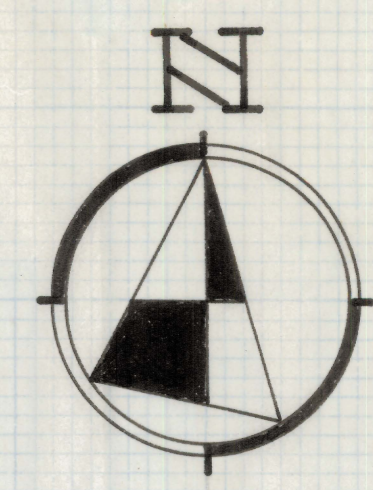
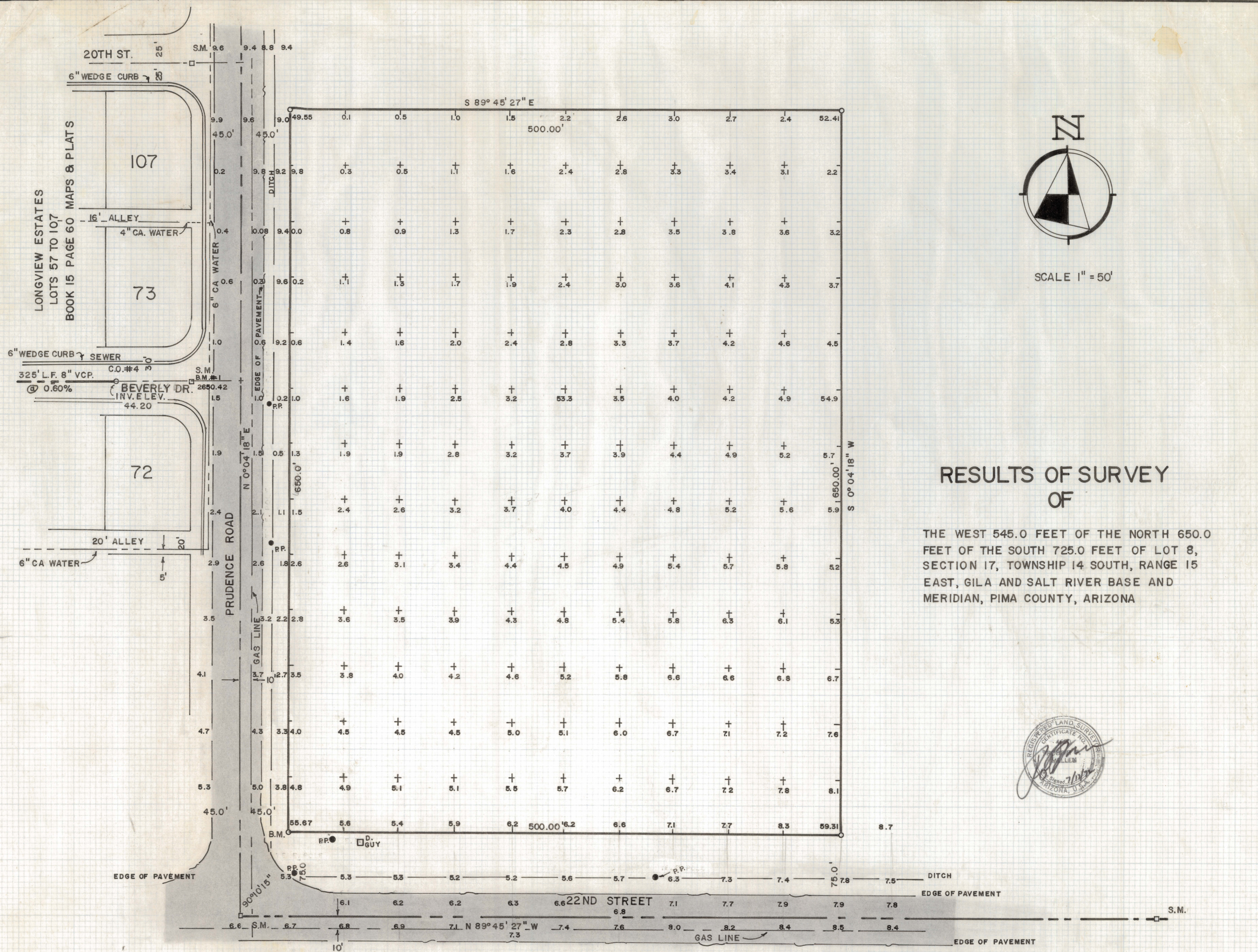


# **DISCLAIMER:**

**This unrecorded Record of Survey was donated to the City of Tucson. The City of Tucson provides this data for your personal use "as is." Additionally, the City of Tucson provides this information with the understanding that it is not guaranteed to be accurate, correct or complete and conclusions drawn from such information are the responsibility of the user.**



SCALE 1" = 50'

### RESULTS OF SURVEY OF

THE WEST 545.0 FEET OF THE NORTH 650.0 FEET OF THE SOUTH 725.0 FEET OF LOT 8, SECTION 17, TOWNSHIP 14 SOUTH, RANGE 15 EAST, GILA AND SALT RIVER BASE AND MERIDIAN, PIMA COUNTY, ARIZONA



#### NOTES

- (1)  $\oplus$  S.M. INDICATES STD. SURVEY MONUMENT FOUND
- (2)  $\circ$  INDICATES 1/2" STEEL PIN SET MARKED L.S. 4680
- (3) BENCH MARK BASED ON CITY OF TUCSON DATUM PLAN I-806 SHEET II OF 13
- (4) C.O. - SANITARY SEWER CLEAN-OUT
- (5) UNDERGROUND TELEPHONE CABLE LIES APPROX. 60' SOUTH OF C 22ND STREET
- (6) THERE IS AN 8" VCP SANITARY SEWER ON THE SOUTHSIDE OF 22ND STREET SEE CITY OF TUCSON PLAN G-69-17 SHEET #1
- (7) B.M. 2" BRASS CAP @ BEVERLY

ROBERT F. MELLEN  
REGISTERED LAND SURVEYOR  
TUCSON, ARIZONA

JOB# 72-91

IM

Z-2020-094