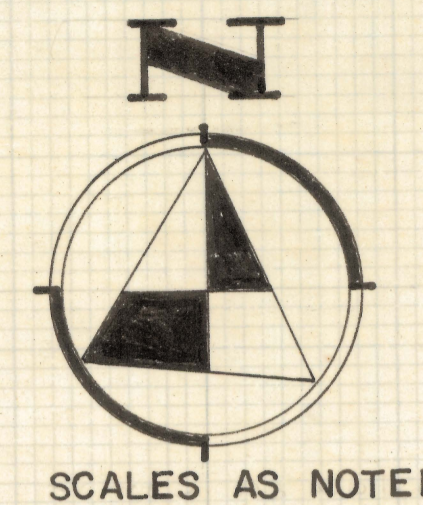
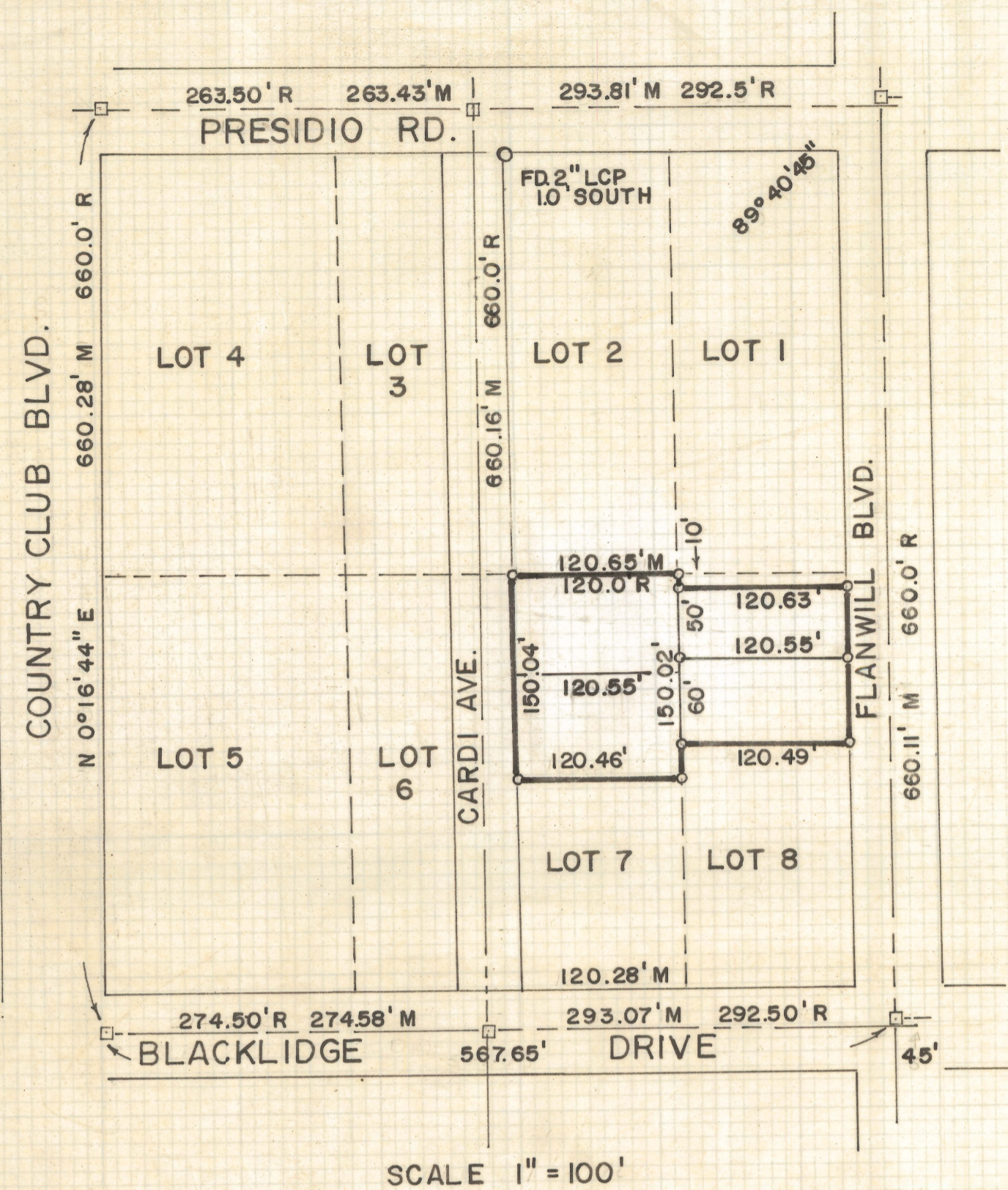


# **DISCLAIMER:**

**This unrecorded Record of Survey was donated to the City of Tucson. The City of Tucson provides this data for your personal use "as is." Additionally, the City of Tucson provides this information with the understanding that it is not guaranteed to be accurate, correct or complete and conclusions drawn from such information are the responsibility of the user.**

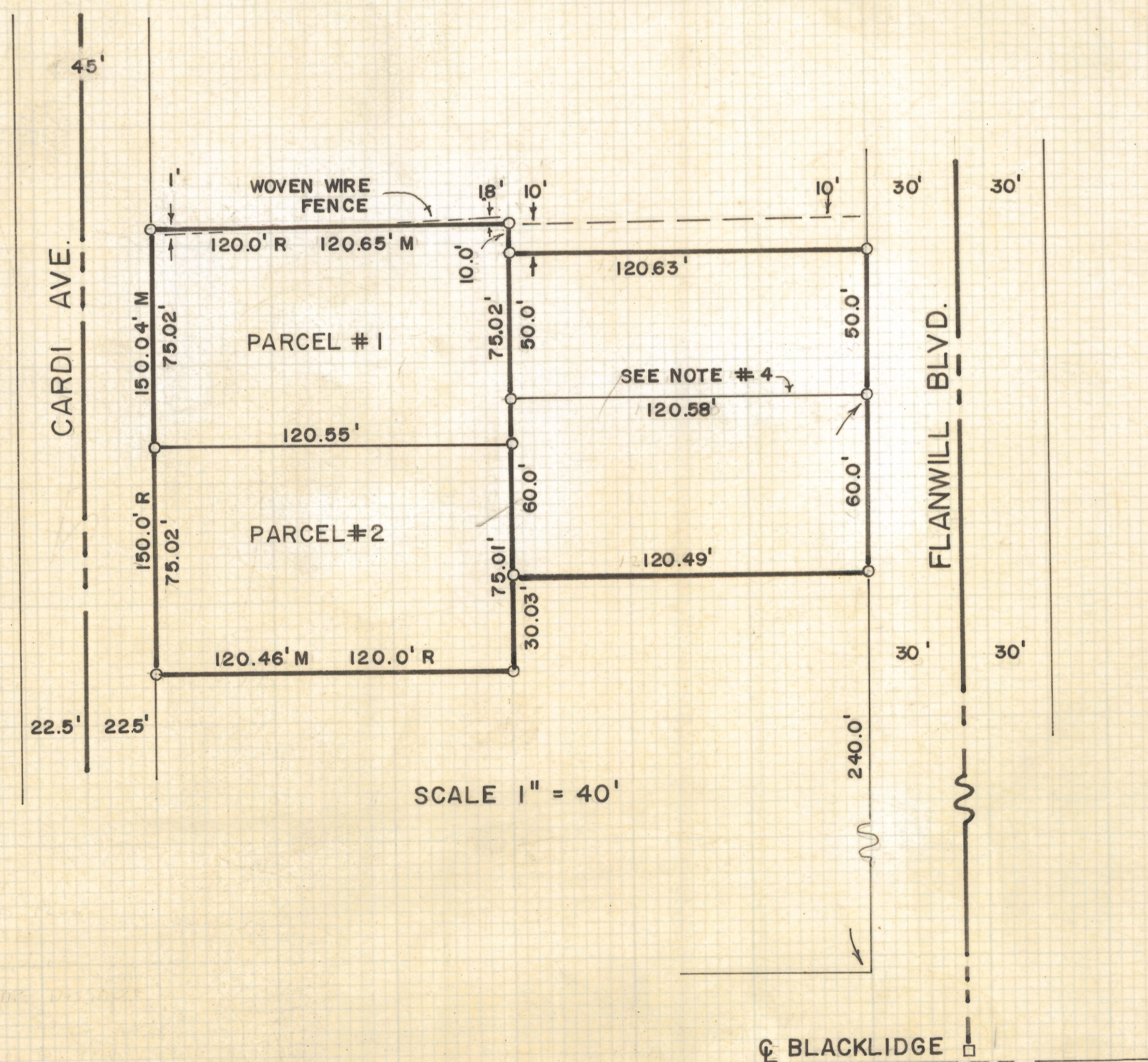




SCALES AS NOTED

## RESULTS OF SURVEY OF

PORTIONS OF LOT SEVEN AND EIGHT, BLOCK SIX  
OF FARMINGTON ADDITION AS RECORDED IN BOOK  
FOUR AT PAGE EIGHTY-NINE OF MAPS AND PLATS  
IN THE OFFICE OF THE PIMA COUNTY RECORDER,  
PIMA COUNTY, ARIZONA.



### NOTES

- (1)  $\dagger$  INDICATES 2" BRASS PLUG SET IN CONCRETE
- (2) M - MEASURED DISTANCE
- (3) R - RECORDED MAP DISTANCE
- (4) THERE IS A SMALL GAP OF APPROX. .03' IN THIS LINE DUE TO THE LEGAL DESCRIPTIONS
- (5) A PORTION OF LOT 6 BLOCK 6 IS ON THE EAST SIDE OF CARDI AVE. SEE DOC. 3165 PAGE 204 AND FARMINGTON ADDITION RESUB. BOOK 10 PAGE 17 OF MAPS AND PLATS
- (6)  $\circ$  INDICATES 5/8" PIN SET MARKED L.S. 4680



ROBERT F. MELLEN  
REGISTERED LAND SURVEYOR  
TUCSON, ARIZONA

JOB # 72-133  
REVISED 9/11/73 PARCEL 1&2

Z-2020-098

IM