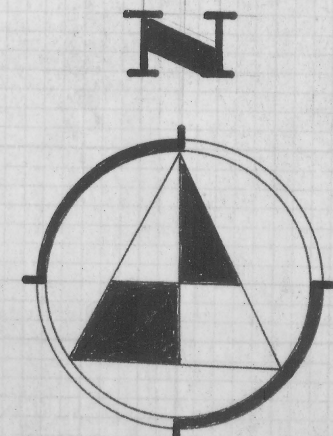


# **DISCLAIMER:**

**This unrecorded Record of Survey was donated to the City of Tucson. The City of Tucson provides this data for your personal use "as is." Additionally, the City of Tucson provides this information with the understanding that it is not guaranteed to be accurate, correct or complete and conclusions drawn from such information are the responsibility of the user.**

Ⓔ CURVE DATA  
CLOVERLAND AVE.

RADIUS = 691.20  
 $\Delta$  = 16° 24'  
 L = 197.84



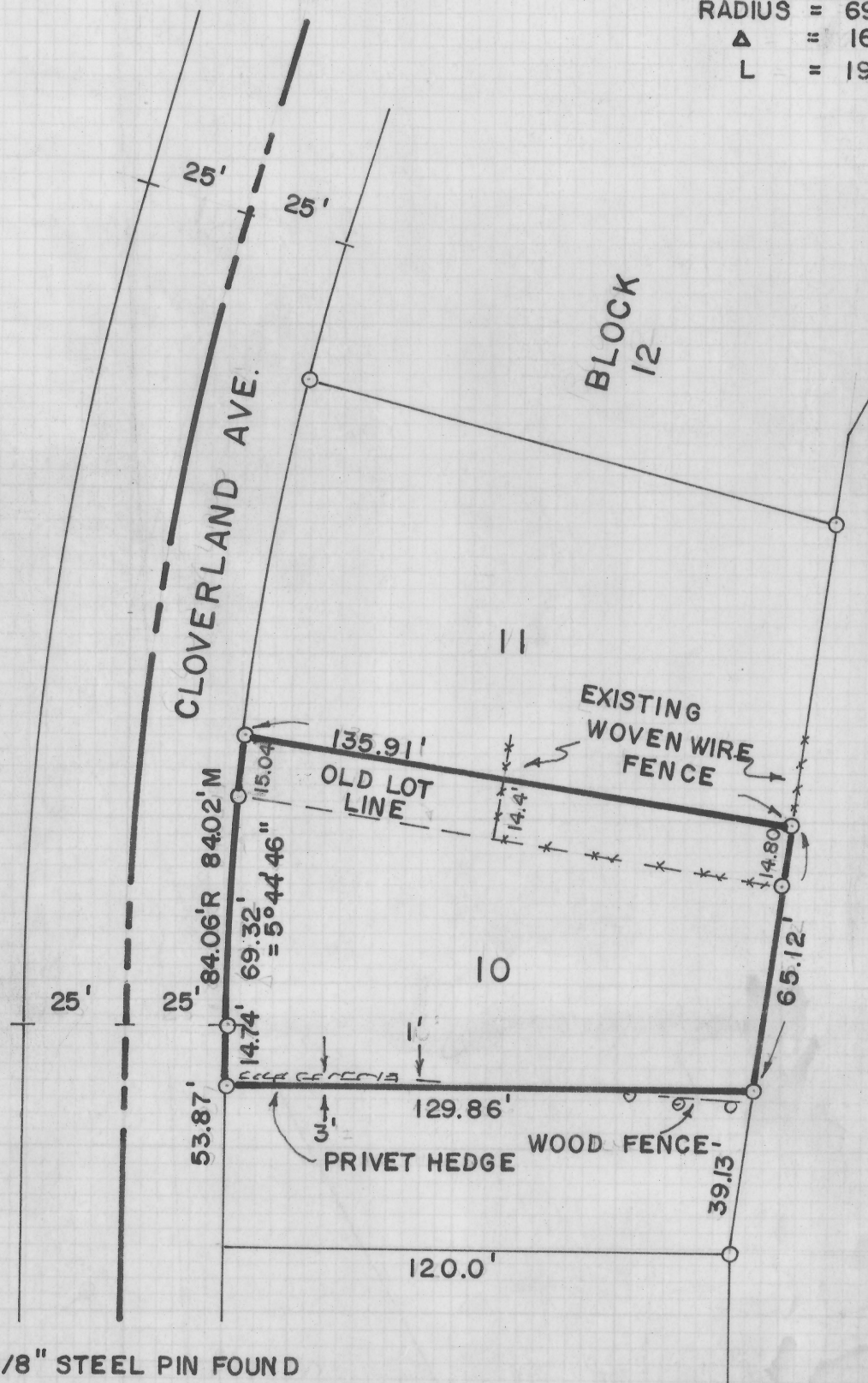
SCALE 1" = 40'



RESULTS OF SURVEY  
OF

PORTIONS OF LOTS 10 AND 11,  
 BLOCK 12 OF FERRY ADDITION  
 AS RECORDED IN BOOK 9 OF  
 MAPS AND PLATS AT PAGE  
 5 IN THE OFFICE OF THE PIMA  
 COUNTY RECORDER, PIMA COUNTY,  
 ARIZONA

ROBERT F. MELLE  
 REGISTERED LAND SURVEYOR  
 TUCSON, ARIZONA



NOTES

- INDICATES 5/8" STEEL PIN FOUND
- INDICATES 5/8" STEEL PIN SET MARKED L.S. 4680

REF. DOC. 2192 AT PAGE 115

JOB #72-131

IM

Z-2020-191