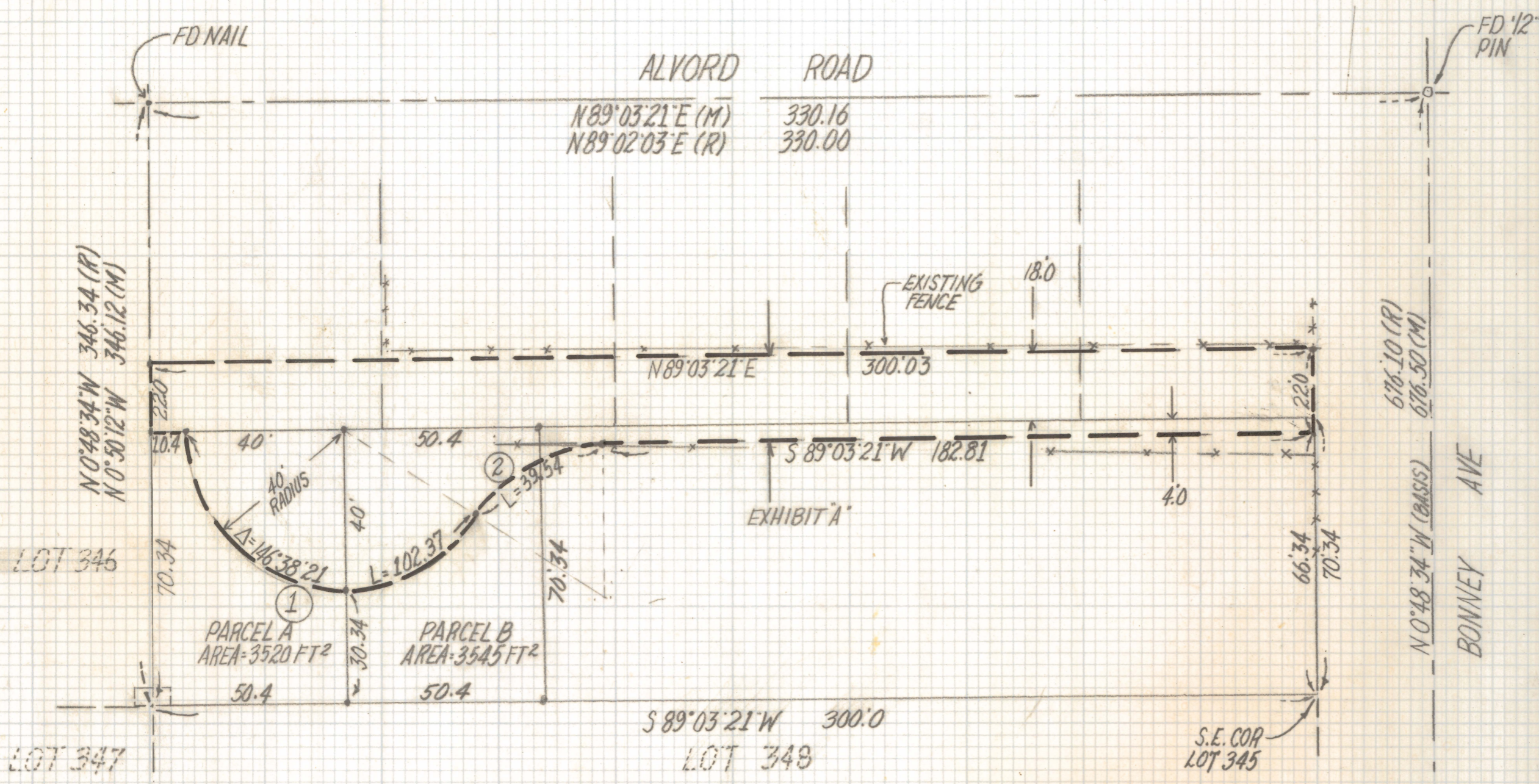


DISCLAIMER:

This unrecorded Record of Survey was donated to the City of Tucson. The City of Tucson provides this data for your personal use "as is." Additionally, the City of Tucson provides this information with the understanding that it is not guaranteed to be accurate, correct or complete and conclusions drawn from such information are the responsibility of the user.



NOTES

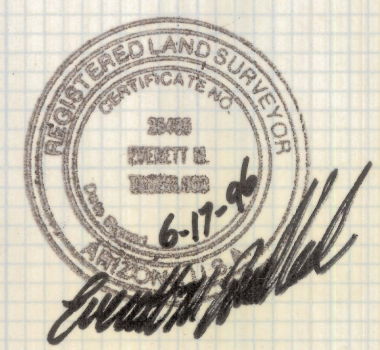
- 1) SEE JOB#95-60 BY ROBERT F. MELLEN FOR MORE INFORMATION

SKETCH OF LEGAL DESCRIPTION

OF A PROPOSED INGRESS/EGRESS AND UTILITY EASEMENT OVER A PORTION OF LOT 345 LOS RANCHITOS N°B AS RECORDED IN BOOK 9 OF MAPS AND PLATS AT PAGE 2 IN THE OFFICE OF THE PIMA COUNTY RECORDER PIMA COUNTY, ARIZONA

MOSSMAN ROAD

FOUND 2" BRASS PLUG IN CONC.



EVERETT M. TRUEBLOOD
REGISTERED LAND SURVEYOR
TUCSON, ARIZONA
JOB# 96-106

CURVE DATA					
N°	RADIUS	DELTA	TANGENT	LENGTH	CHORD
1	40.0	146°38'21"	133.49	102.37	76.63
2	40.0	56°38'21"	21.56	39.54	37.95