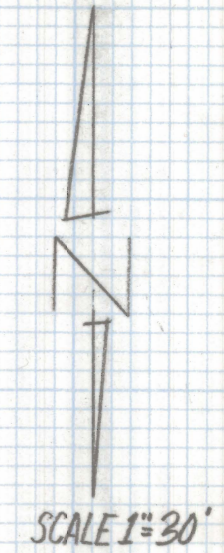
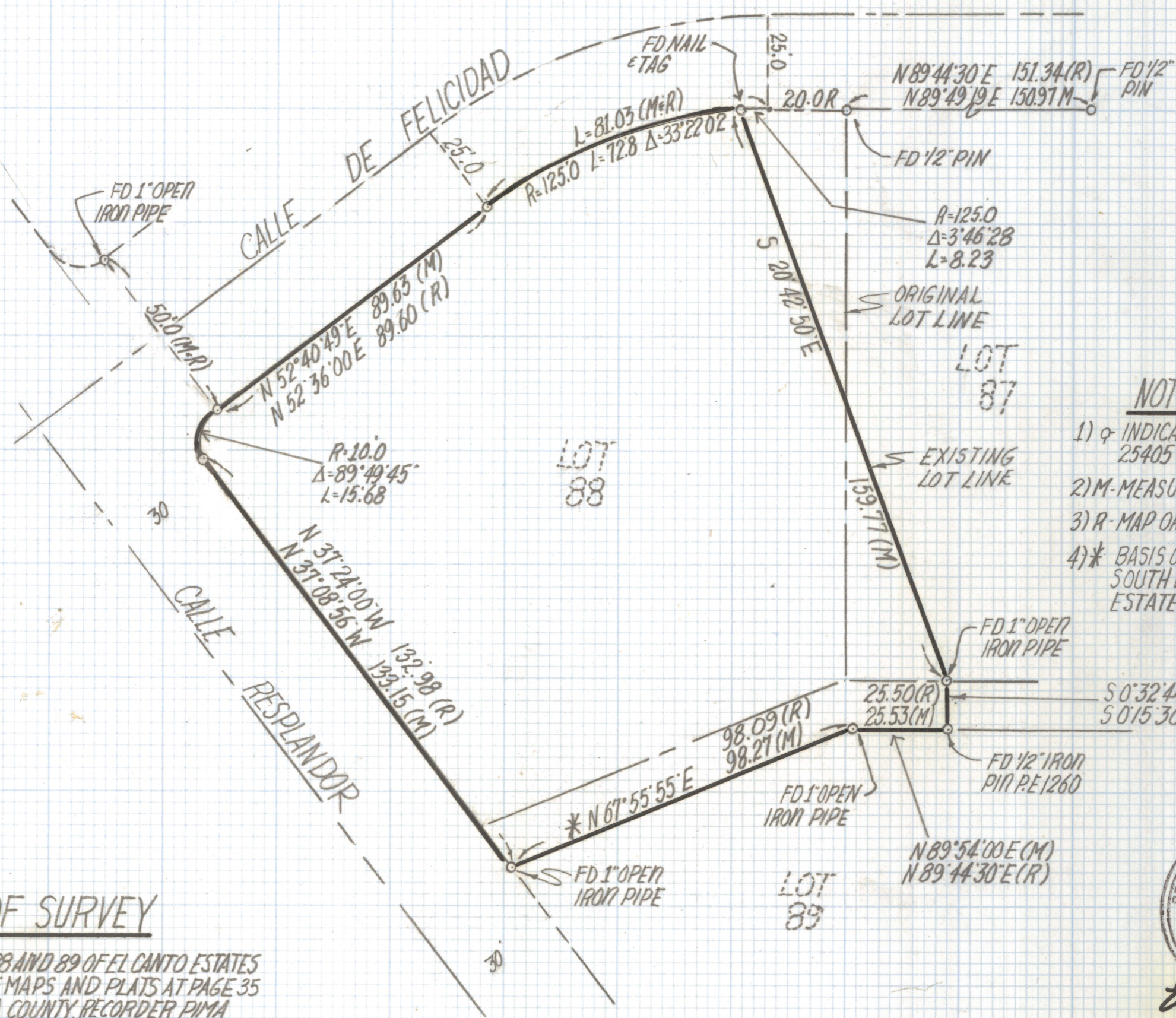


DISCLAIMER:

This unrecorded Record of Survey was donated to the City of Tucson. The City of Tucson provides this data for your personal use "as is." Additionally, the City of Tucson provides this information with the understanding that it is not guaranteed to be accurate, correct or complete and conclusions drawn from such information are the responsibility of the user.



- NOTES**
- 1) ♀ INDICATES SET 1/2" PIN MKD R.L.S. 25405 UNLESS NOTED
 - 2) M-MEASURED
 - 3) R- MAP OR DEED RECORD
 - 4) * BASIS OF BEARINGS S 67°55'55" W SOUTH LINE OF LOT 88 OF EL CANTO ESTATES BOOK 5 PAGE 35 M&P.

RESULTS OF SURVEY

OF A PORTION OF LOT 87, 88 AND 89 OF EL CANTO ESTATES AS RECORDED IN BOOK 5 OF MAPS AND PLATS AT PAGE 35 IN THE OFFICE OF THE PIMA COUNTY RECORDER PIMA COUNTY, ARIZONA.



EVERETT M. TRUEBLOOD
 REGISTERED LAND SURVEYOR
 TUCSON, ARIZONA
 JOB# 96-113
 PH: 1-520-888-2549