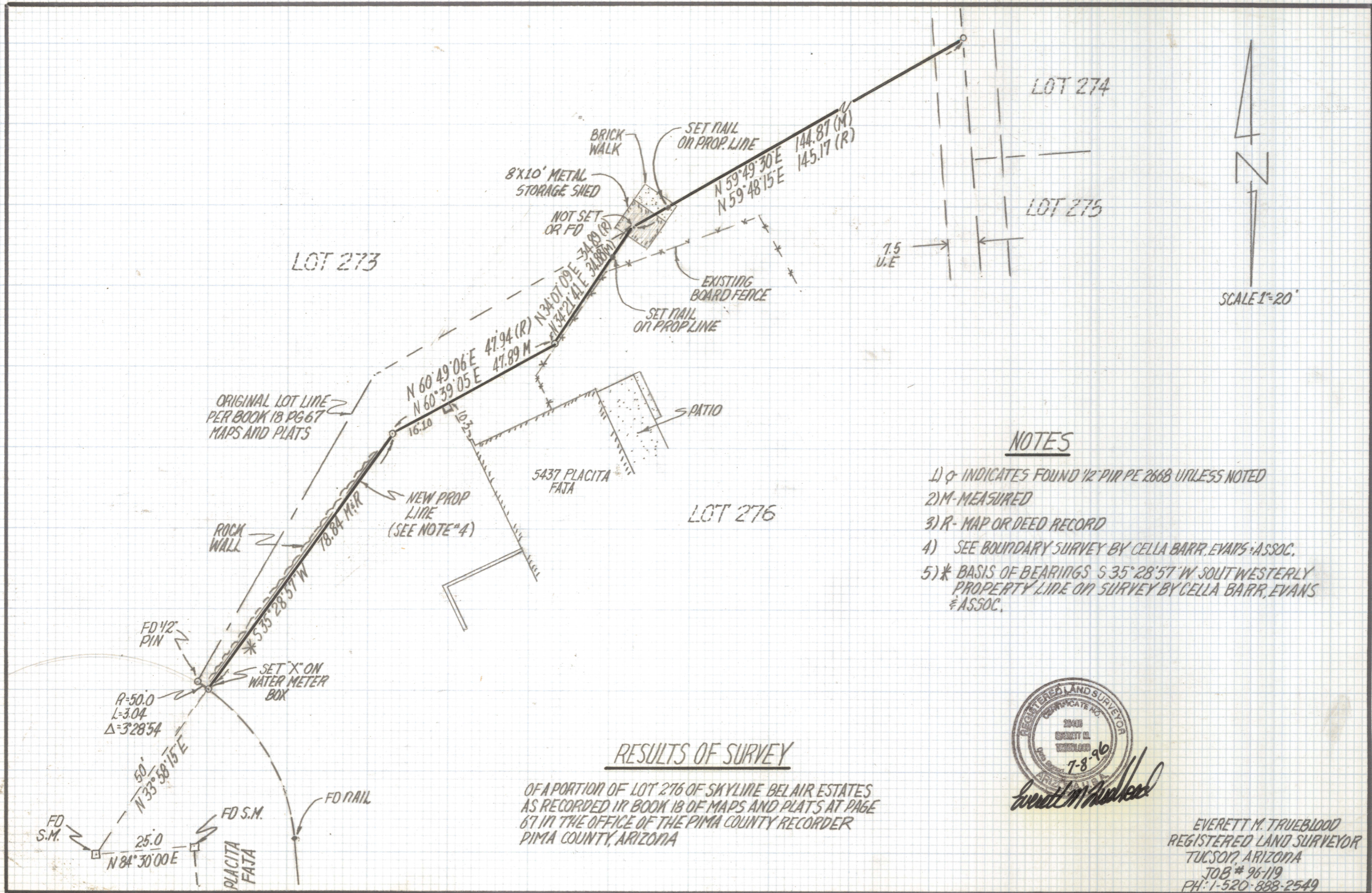


# **DISCLAIMER:**

**This unrecorded Record of Survey was donated to the City of Tucson. The City of Tucson provides this data for your personal use "as is." Additionally, the City of Tucson provides this information with the understanding that it is not guaranteed to be accurate, correct or complete and conclusions drawn from such information are the responsibility of the user.**



**NOTES**

- 1)  $\phi$  INDICATES FOUND  $\frac{1}{2}$ " PIR PE 2668 UNLESS NOTED
- 2) M-MEASURED
- 3) R- MAP OR DEED RECORD
- 4) SEE BOUNDARY SURVEY BY CELLA BARR, EVANS & ASSOC.
- 5) \* BASIS OF BEARINGS S 35° 28' 57" W SOUTHWESTERLY PROPERTY LINE ON SURVEY BY CELLA BARR, EVANS & ASSOC.

**RESULTS OF SURVEY**

OF A PORTION OF LOT 276 OF SKYLINE BELAIR ESTATES AS RECORDED IN BOOK 18 OF MAPS AND PLATS AT PAGE 67 IN THE OFFICE OF THE PIMA COUNTY RECORDER PIMA COUNTY, ARIZONA



*Everett M. Trueblood*

EVERETT M. TRUEBLOOD  
 REGISTERED LAND SURVEYOR  
 TUCSON, ARIZONA  
 JOB # 96-119  
 PH: 1-520-888-2549