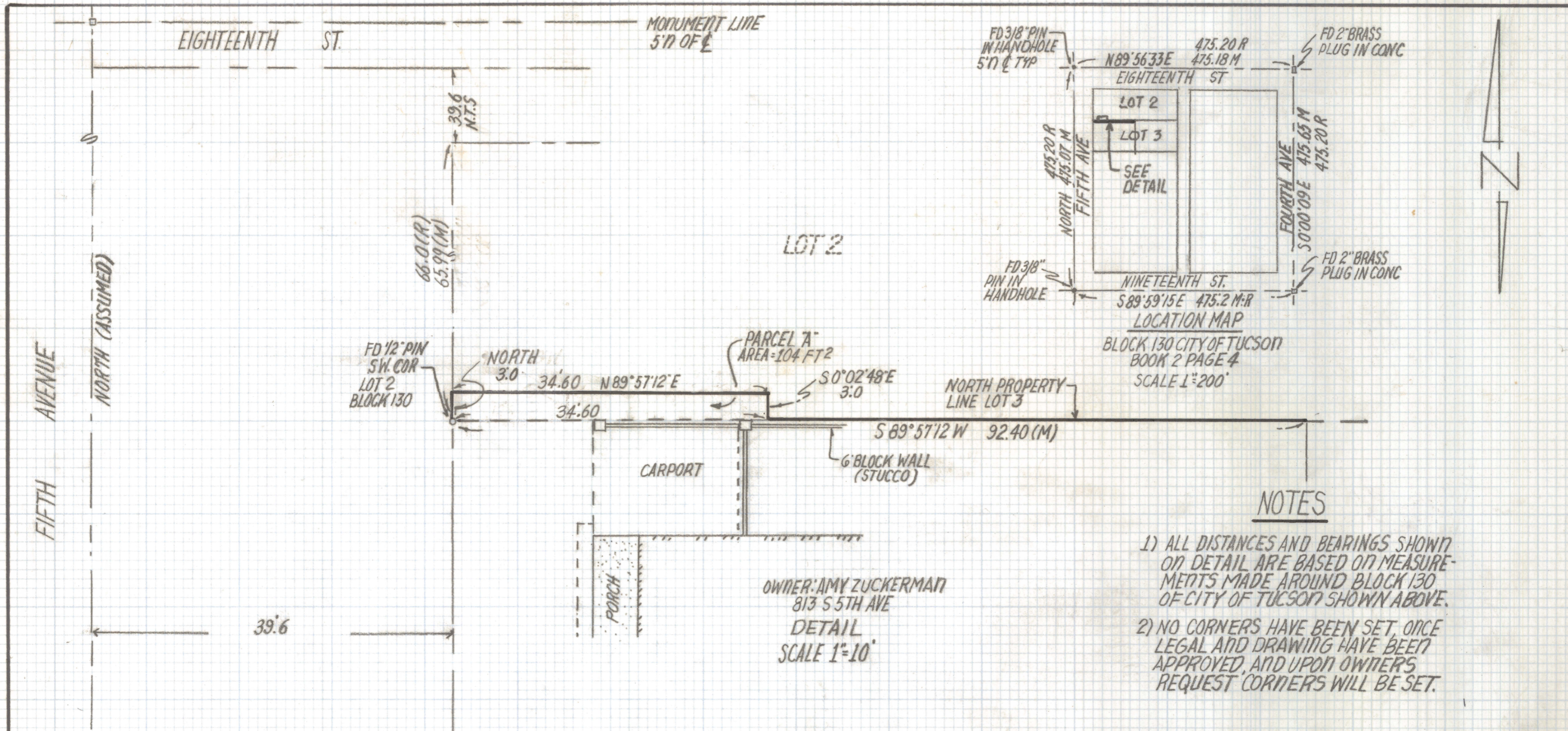


# **DISCLAIMER:**

**This unrecorded Record of Survey was donated to the City of Tucson. The City of Tucson provides this data for your personal use "as is." Additionally, the City of Tucson provides this information with the understanding that it is not guaranteed to be accurate, correct or complete and conclusions drawn from such information are the responsibility of the user.**





LOCATION MAP  
BLOCK 130 CITY OF TUCSON  
BOOK 2 PAGE 4  
SCALE 1"=200'

NOTES

- 1) ALL DISTANCES AND BEARINGS SHOWN ON DETAIL ARE BASED ON MEASUREMENTS MADE AROUND BLOCK 130 OF CITY OF TUCSON SHOWN ABOVE.
- 2) NO CORNERS HAVE BEEN SET, ONCE LEGAL AND DRAWING HAVE BEEN APPROVED, AND UPON OWNER'S REQUEST CORNERS WILL BE SET.

SKETCH  
OF  
LEGAL DESCRIPTION

OF A PORTION OF LOT 2 BLOCK 130 CITY OF TUCSON AS RECORDED IN BOOK 2 OF MAPS AND PLATS AT PAGE 4 IN THE OFFICE OF THE PIMA COUNTY RECORDER PIMA COUNTY, ARIZONA.



EVERETT M. TRUEBLOOD  
REGISTERED LAND SURVEYOR  
TUCSON, ARIZONA  
JOB# 96-124 B

REVISED PARCEL A 8-9-96

Z-2020-1019