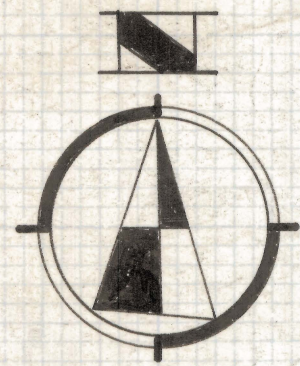
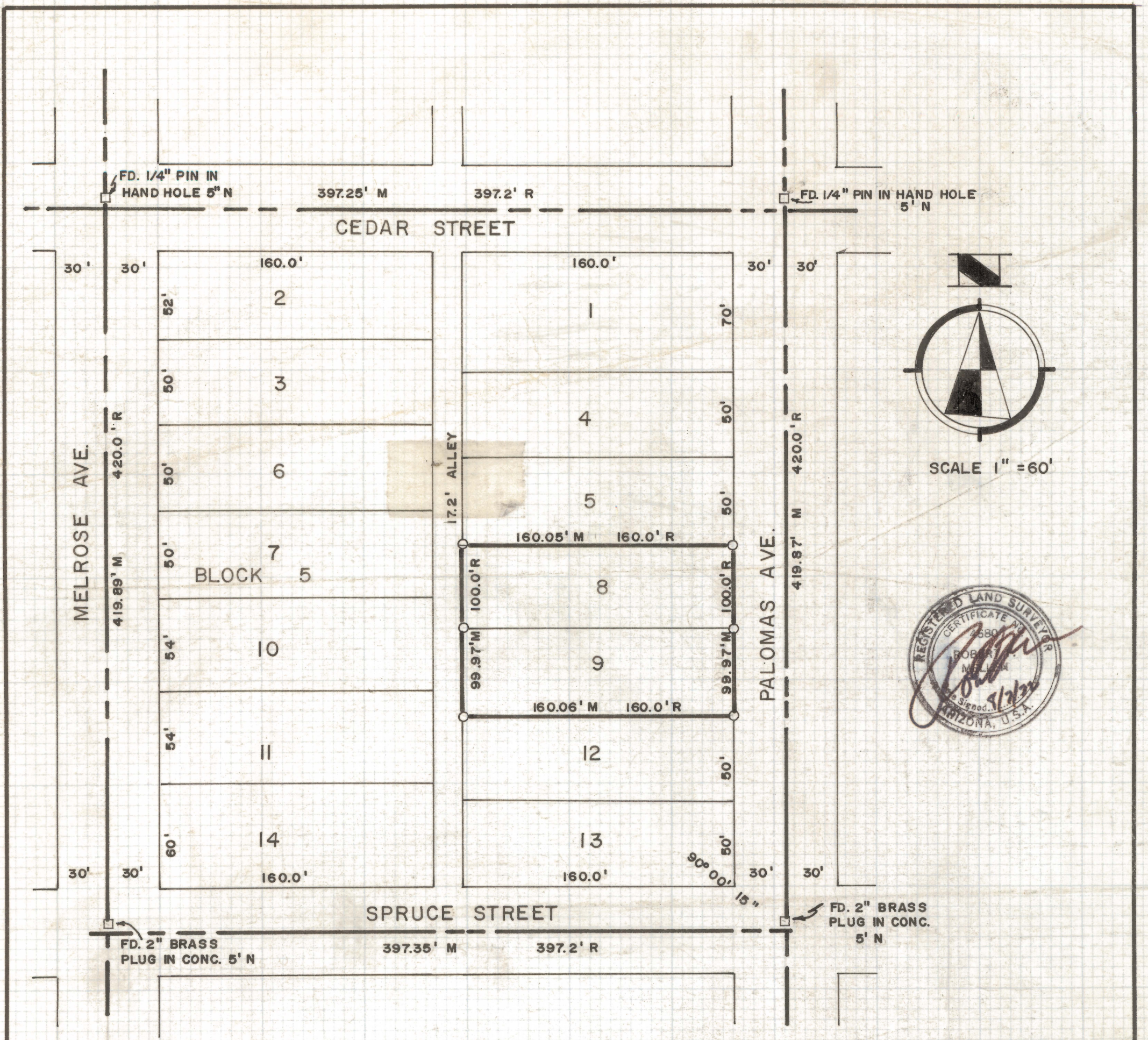


DISCLAIMER:

This unrecorded Record of Survey was donated to the City of Tucson. The City of Tucson provides this data for your personal use "as is." Additionally, the City of Tucson provides this information with the understanding that it is not guaranteed to be accurate, correct or complete and conclusions drawn from such information are the responsibility of the user.



RESULTS OF SURVEY OF

LOTS 8 AND 9 OF BLOCK 5 OF SOUTH MENLO
PARK SUBDIVISION AS RECORDED IN BOOK 3
OF MAPS AND PLATS AT PAGE 131 IN THE OFFICE
OF THE PIMA COUNTY RECORDER, PIMA COUNTY,
ARIZONA

M - MEASURED R - MAP RECORD

⊙ INDICATES 5/8" STEEL PIN SET
MKD. L.S. 4680

NOTCHES SET IN WALK ON FRONT LOT LINES

ROBERT F. MELLEN
REGISTERED LAND SURVEYOR
TUCSON, ARIZONA

JOB # 72-106

IM

Z-2020-102

4